

# AUTOVUE WEB VERSIONS

## KEY FEATURES AND BENEFITS

### KEY FEATURES

- Allows real-time collaboration
- Speeds viewing of complex CAD documents
- Supports hundreds of document types for viewing via a Web browser
- Facilitates markups and comments
- Integrates with enterprise systems
- Interoperates and integrates with third-party and legacy applications using AutoVue Web Services
- Scales to the needs of the extended enterprise

### KEY BENEFITS

- Extend the reach of technical documents to all enterprise users
- Collaborate without risking intellectual property
- Drive bottom-line results with real-time collaboration
- Deploy and maintain easily from a single-server location

"The Web versions of AutoVue products are ideal in terms of support and maintenance, since new versions only need to be installed once on the server. This is particularly convenient for keeping up with new supported formats and updates, plus it tremendously facilitates AutoVue access for casual users."

—Lars Fuglsang,  
Project Manager,  
Ramboll Denmark

*Bringing industrial-strength, Web-based viewing capabilities to global organizations, the Web versions of Oracle's AutoVue products serve as unique thin client visualization solutions for connecting enterprise users, information, and processes in a secure, efficient, and flexible manner. In the process, they eliminate barriers of communication, geography, and language. Today, dispersed teams can use the Web versions of AutoVue enterprise visualization products to securely view, review, and collaborate in real time on documents through project extranets, intranets, and the internet.*

### Extend the Reach of Technical Documents to All Enterprise Users

With the AutoVue Web versions, you can provide all team members with instant visibility into your design and product information from any desktop, via a Web browser. Ensuring uninterrupted access to business and technical documents regardless of desktop configuration, the AutoVue Web versions let users view documents even if they don't have the software in which the documents were created.

### Collaborate in Real time with Global Teams

By using the Web versions of AutoVue products, global teams can communicate as easily as if all the team members were working in the same room. The AutoVue Web versions let dispersed users simultaneously review and mark up documents, exchange ideas, assign action items, and resolve design issues in real time. Users can accelerate designs reviews, improve product quality and reduce travel costs,

### Collaborate without Risking Intellectual Property

The Web version of AutoVue allows users to securely collaborate with extended teams and outsourced partners on sensitive documents without risking a company's valuable intellectual property (IP). AutoVue Web version's unique streaming technology provides access to the full intelligence of documents without transferring the original files to the client desktop; originals never leave the server, and no local temps or cache files of any kind are created in the process, ensuring that a company's IP remains under the total control of its owner.

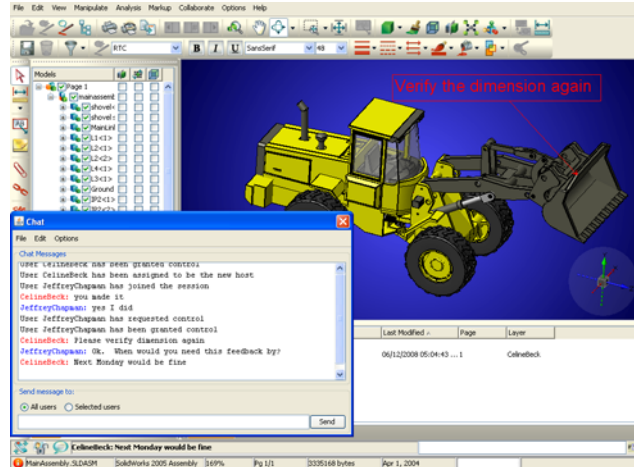
### Deploy and Maintain with Ease

Because the Web versions of AutoVue products are deployed and maintained from a central server, installing and updating them is a snap for IT departments. They only need to install and update once—on the server, freeing up precious IT resources. AutoVue Web version will also perform automatic versioning control when updates of the software are installed directly on the server.

**EXTEND THE REACH OF INFORMATION WITHIN AND OUTSIDE YOUR ORGANIZATION**

#### ORACLE'S AUTOVUE MOBILE

AutoVue Mobile enables global organizations extend the reach of technical information and business processes to disconnected users within and outside an organization. Through the sharing of Mobile Packs, AutoVue Mobile significantly improves how teams interact with information and one another, increasing visibility of key technical data, and providing insight into the context surrounding the documents. Teams can collaborate more effectively and securely with global supply chain partners, allowing them to meet the rigorous demands of product development and achieve competitive advantage.



**Figure 1: The AutoVue Web versions make it easy to perform simultaneous document reviews via the Web, and can manage and track reviewer feedback.**

#### Leverage Existing IT Infrastructure with Easy Integrations

The Web version of AutoVue products can be integrated into existing content management, product lifecycle management, or enterprise resource planning systems, as well as file servers or home-grown solutions. Integrated with existing enterprise systems, AutoVue connects information, people and processes, delivering anytime, anywhere access to vital information stored into your back-end system and maximizing business process efficiency. Organizations can also leverage productivity features like AutoVue's IntelliStamp, which allows for workflow automation through the electronic signing and stamping of documents reviewed in AutoVue with attributes from the back-end system.

Oracle-developed Integrations are available for:

- Oracle Product Lifecycle Management
- Oracle Universal Content Management
- ENOVIA MatrixOne
- Microsoft SharePoint
- EMC Documentum,
- SAP Product Lifecycle Management.

Customers can also build their own integrations using AutoVue's integration software development kit (SDK) or Web Services.

#### Expand the Power of your Applications with Enterprise Visualization

With AutoVue Web Services, AutoVue reaffirms its commitment to open, standard-based architecture, facilitating the creation of a truly flexible and adaptable IT infrastructure. Using Web Services, companies can easily integrate AutoVue's best-in-class enterprise visualization capabilities in other enterprise applications. Through AutoVue Web Services, organizations can leverage the power of AutoVue Web Version in whole or in part and capitalize on functions like the ability to generate

document thumbnails in a Web portal, feed information contained in CAD files into search engines or process high volume printing operations to name a few.

### Key Features and Capabilities

**View hundreds of document types.** AutoVue Web version delivers native document viewing capabilities, allowing users to easily access the full, embedded intelligence in a 3D model a 2D drawing or a Printed Circuit Board—all without the authoring software and without undergoing costly and error-prone document conversions.

**Accelerate viewing of complex CAD files.** Easily share, access, view and review large CAD files, even in low bandwidth situations. AutoVue Web version features a unique, network friendly architecture and streaming technology that ensure optimized performance, high-speed data delivery and low impact on network bandwidth. Native CAD data is rendered on the server and a stream of information is sent down to the client machine in an on-demand fashion. Users can begin viewing and working on complex 3-D assemblies and multipage 2-D CAD documents when only a fraction of the data has been streamed. As information is streamed down to the client, it is also saved and managed on the AutoVue Server as a streaming file, which speeds up subsequent viewing of CAD documents.

**Add markups and track reviews & comments.** Add markups, as well as sound, video and graphic attachments to your documents. Easily manage and track feedback, change requests, and comments across multiple reviewers.

**Collaborate in real time.** By taking advantage of AutoVue Web versions' real-time collaboration capabilities, you can improve communication with global teams and productivity.

Initiate real-time collaboration sessions with team members across time zones and allow participants to simultaneously view and mark up documents via the Web to speed up document reviews and cycle times.

- Enable all team members to create simultaneous markups without having to pass control to each person. You can, however, grant a person control to manipulate the view of the drawing or model, which is seen by all.
- Identify contributors' feedback with color-coded markups and chat. Author information is attached to each markup entity.
- Investigate areas of a document privately during a session using the Unlock View feature.
- Use the Show Tracker window to allow unlocked participants to track the common view via a separate window, as shown in Figure 2.

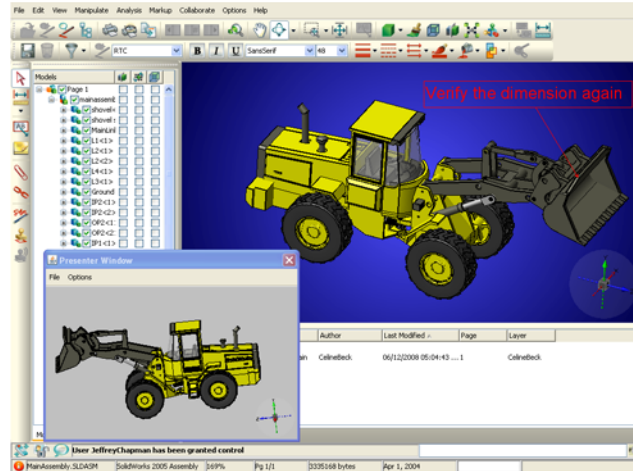
## RELATED PRODUCTS

### ORACLE'S AUTOVUE ENTERPRISE VISUALIZATION PRODUCTS

Increase productivity, achieve faster time to market, and eliminate the cost associated with multiple server-side and client-side viewers. AutoVue enterprise visualization products enable users to view, mark up, and collaborate on documents that originate from more than 450 different formats, without requiring the authoring application.

### RELATED PRODUCTS

- AutoVue 2D Professional
- AutoVue 3D Professional
- AutoVue EDA Professional
- AutoVue Electro-Mechanical Professional
- AutoVue Mobile
- AutoVue Office



**Figure 2: The Show Tracker window of the AutoVue Web versions lets users track the common view in a separate window.**

- Pause and resume sessions.
- Create an audit trail and capture session information—including meeting subject, meeting host, date and time, participants, a transcript of the session's events, and a complete chat record. You can refer back to a meeting's minutes at a later date.

**Enforce server-based privileges and permissions.** Manage and control users' access permission level, and define the user-interface capabilities and feature set from the server.

**Scale to meet the needs of the extended enterprise.** Add servers to accommodate additional users and clients—a task that can be carried out online and without interrupting service. The AutoVue server cluster efficiently balances loads.

### Contact Us

For more information about the Web versions of Oracle's AutoVue enterprise visualization products, please visit [oracle.com/applications/autovue](http://oracle.com/applications/autovue), call +1.800.363.5805 or +1.514.905.8400 to speak to an Oracle representative, or email [autovuesales\\_ww@oracle.com](mailto:autovuesales_ww@oracle.com).

Copyright © 2008, Oracle and/or its affiliates. All rights reserved.

This document is provided for information purposes only, and the contents hereof are subject to change without notice. This document is not warranted to be error-free, nor is it subject to any other warranties or conditions, whether expressed orally or implied in law, including implied warranties and conditions of merchantability or fitness for a particular purpose. We specifically disclaim any liability with respect to this document, and no contractual obligations are formed either directly or indirectly by this document. This document may not be reproduced or transmitted in any form or by any means, electronic or mechanical, for any purpose, without our prior written permission.

Oracle is a registered trademark of Oracle Corporation and/or its affiliates. Other names may be trademarks of their respective owners.