

ORACLE HRMS WORKBENCH

KEY FEATURES

- Lower your total cost of ownership
- Reduce implementation risk, time and cost
- Use common desktop tools to simplify data conversion
- Enable rapid, reliable, and repeatable configurations
- Manage configuration changes as you evolve
- Quick-start the implementation process

Oracle® HRMS Workbench delivers an integrated configuration management toolset for HR systems that makes it possible to lower the total cost of ownership during implementation and throughout the application lifecycle. The Workbench provides a unified and consistent framework to assist in the evaluation, configuration, deployment and maintenance of sophisticated HRMS applications.

Reduce Implementation Risk, Time and Cost

Within the HRMS Workbench, Oracle is the first major applications vendor to deliver an integrated configuration management toolset for HR systems that makes it possible to lower the total cost of ownership during the implementation phase and throughout the application life cycle.

Dramatically Simplify Configuration and Maintenance Processes

A guided interview process lets multiple users collaborate on the critical configuration decisions for the common Legal, HR and Financial data model that is shared by all modules of the eBusiness Suite. Creation of an xml data file encapsulates detailed setup data in a portable format that can generate a working configuration on one or more installed systems.

The screenshot displays the Oracle HRMS Configuration Workbench interface. At the top, there is a navigation bar with tabs for 'Workbench', 'iSetup Home', 'Migrations', 'Reports', and 'Administration'. Below this is a progress bar with steps: 'Product Selection', 'Enter Enterprise Information' (current step), 'Enter Country Details', 'Enter Operating Companies', 'Map Company Registration by Country', 'List Legal Entities', and 'More'. The main content area is titled 'Organization Structure: Enter Enterprise Information' and contains a form with the following fields:

- * Enterprise Name: ACME Corporation
- * Short Name: ACME (with a note: 'Six characters or fewer')
- * Primary Industry: Consumer Packaged Goods (dropdown menu)
- * Headquarters Country: United States (with a location pin icon)
- * Location Name: (with a 'Location Details' button below it)

 A sidebar on the right titled 'Enterprise Information' contains explanatory text. The bottom of the interface features a footer with navigation links and copyright information: 'Workbench iSetup Home Migrations Reports Administration Home Logout Help Preferences Diagnostics About this Page Privacy Statement Copyright (c) 2006, Oracle. All rights reserved.'

Figure 1. One step of the guided interview to define organization structure

Easy to Follow Configuration Interview Process Based Upon Operational Questions

Combining embedded expertise that delivers best-practice configuration advice for business users, and configuration templates for specific industries and geographies, should significantly reduce the time needed to make important configuration decisions

and reduce the risk of rework associated with inappropriate choices. Diagnostic tools for business users report the current configuration status on any instance and will highlight common problems or exceptions with warnings and suggested actions. A Technical Summary Report documents the configuration details that will be auto-generated when a configuration is loaded. Using the “Generate Test Suite” function you are able to generate WinRunner™ compatible test scripts as well as plans for any defined configuration.

HCM Wizard Integrations Within Workbench

The Benefit Plan Wizard provides the user with an intuitive process for creating and maintaining Health and Welfare programs. It also provides additional process steps for copying, exporting, and viewing plan designs. The grade progression wizard helps you to define the setup of grades, steps and point progressions. Additionally it assists with the creation of eligibility criteria for progressions as well as automatic population of salary proposals.

Open Systems Integration Tools are Included as Standard

The Workbench integrates standard desktop tools to simplify data mapping and conversion. Use spreadsheets that dynamically format themselves to match your configuration and take advantage of specially embedded knowledge of oracle HRMS. Use spreadsheets in disconnected mode or online to validate and automatically upload via HRMS open interface tables. Spreadsheet loaders for taxability rules, employee tax information, organizational extra info, user-defined tables, and benefit enrollments are provided as standard.

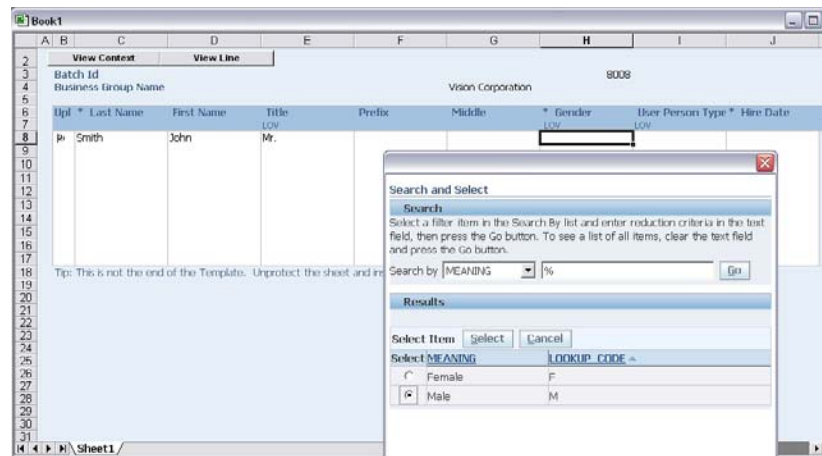


Figure 2. Spreadsheet to load employees showing List of Value (LOV) capability

Generate Prototype Configurations for Conference Room Pilots

Quick Start your project with a process that delivers a working conference room pilot in a matter of days not weeks. Modify and immediately regenerate configurations as you work and then quickly reload or modify common or reference data. Maintain and compare snapshots of your configuration choices for discussion and review.

Business users can select from a library of pre-defined configurations for specific functional setups – E.g. Select from a list of defined payroll earnings and deductions by

KEY BENEFITS**LOWER TOTAL COST OF OWNERSHIP:**

- Simplifying the configuration and maintenance during implementation time and ongoing operational tasks can help to reduce your costs of both implementation and overall ownership

EMBEDS BEST-PRACTICE CONFIGURATION ADVICE:

- The interview process and delivered solution templates combine knowledge of our products with good practice in HR Management providing you with a tool which helps to drive your implementation forward

QUICK START THE IMPLEMENTATION PROCESS:

- It allows you quickly to generate prototype configurations for conference room pilots or to setup and test new features before migrating them to the live instance

RELATED PRODUCTS

- Advanced Benefits
- Daily Business Intelligence for Human Resources
- Human Resources
- iRecruitment
- Learning Management
- Payroll
- Self-Service Human Resources
- Time & Labor

RELATED SERVICES

The following services are available from Oracle Support Services:

- Oracle E-Business Suite Accelerators
- Oracle Application Solution Centers
- Oracle University
- Oracle Consulting

industry or geography and load these directly into any instance. Immediately start using and processing these elements of pay or use them as templates to quick start your HRMS implementation. Configuration wizards allow business users to tailor and maintain specific functional areas of the system after initial setup.

Upgrade HR Foundation

If you are upgrading from using HR Foundation as a shared option with Financials or Projects to a full implementation of Oracle HR, a guided process will help you to determine whether you should re-implement your HR configuration or set up additional business groups and migrate the data while maintaining references to the existing applications.

Manage the Lifecycle of Your Applications through Seamless Configuration Migration

Data migration tools make it easy to extract and migrate complete or partial configuration data between instances. Use these tools to move configurations from QA to Production environments or to create new QA environments from a production instance and eliminate the risks associated with re-keying data.

Payroll customers can take advantage of the new element migration feature facilitating the transfer of elements and associated entities either between instances or business groups having the same legislation.

Oracle E-Business Suite—The Complete Solution

Oracle E-Business Suite enables companies to efficiently manage customer processes, manufacture products, ship orders, collect payments, and more—all from applications that are built on unified information architecture. This information architecture provides a single definition of your customers, suppliers, employees, and products—all important aspects of your business. Whether you implement one module or the entire Suite, Oracle E-Business Suite enables you to share unified information across the enterprise so you can make smarter decisions with better information.

Copyright 2006, Oracle. All Rights Reserved.

This document is provided for information purposes only, and the contents hereof are subject to change without notice. This document is not warranted to be error-free, nor is it subject to any other warranties or conditions, whether expressed orally or implied in law, including implied warranties and conditions of merchantability or fitness for a particular purpose. We specifically disclaim any liability with respect to this document, and no contractual obligations are formed either directly or indirectly by this document. This document may not be reproduced or transmitted in any form or by any means, electronic or mechanical, for any purpose, without our prior written permission.

Oracle, JD Edwards, PeopleSoft, and Siebel are registered trademarks of Oracle Corporation and/or its affiliates. Other names may be trademarks of their respective owners.