

PEOPLESOFT ENTERPRISE PORTAL



- Offers rich collaboration features including collaborative workspaces
- Pre-built PeopleSoft application content available in portal packs
- Supports portal interoperability standards such as WSRP and JSR 168
- Easy configuration, deployment and customization
- Architected to enable decentralized administration
- Built on the PeopleTools foundation
- Supports database and web server independence
- Supported by Oracle's Applications Unlimited Program: commitment, choice, and value

Portals enable aggregating disparate content and presenting the right information to the right people. The PeopleSoft Enterprise Portal extends this notion by providing additional functional capabilities to help people work together and improve business process execution. Enterprise Portal leverages our unique understanding of business processes and the portal needs of an enterprise user.

Oracle's PeopleSoft Enterprise Portal is a functional application with a strong community focus, offering unique Web 2.0 features such as in-context collaborative workspaces. These enable communities to work more efficiently and effectively on their projects and business processes. Portal features are architected to allow decentralized administration to ensure that portal content stays current and relevant.

Enterprise Portal is built on the PeopleTools infrastructure, and is tightly integrated with PeopleSoft applications. It is thus easy to configure and deploy. The Portal can also readily consume PeopleSoft Applications Portal packs, which provide out-of-the-box functionality to support customers' most common business processes. The Enterprise Portal supports portal interoperability standards such as WSRP and JSR 168, and can consume content from virtually any compliant source.

PeopleSoft Enterprise Portal Overview

PeopleSoft Enterprise Portal has been available since 2000. The Portal initially focused on content aggregation capabilities in line with customer needs of the time. The portal marketplace since then has seen significant change and Enterprise Portal has been a leader, introducing features supporting collaboration, communities, and context-rich composite user interfaces. It delivered collaboration functionalities such as Discussion Forums and Online document management in 2003 when the term 'Web 2.0' had not yet been coined. The Enterprise Portal has continued to extend portal functionality by delivering workspaces and community calendars among other features. With the formal acceptance of Web 2.0 technologies in the enterprise, the marketplace has confirmed the strategy promoted by Enterprise Portal since 2003.

The Portal also provides more conventional portal capabilities such as content management, search, pagelet (aka portlet) development and configuration, site management etc. By supporting portal interoperability standards such as WSRP and JSR 168, customers can aggregate any PeopleSoft or non-PeopleSoft content in the Enterprise. They can also publish Portal content via WSRP.

Enterprise Portal is built on the foundation of the PeopleTools architecture, which means it is tightly integrated with PeopleSoft applications. It also enables customers to leverage their existing PeopleTools skills in extending the portal application to their specific needs.

Enterprise Portal and Applications Unlimited

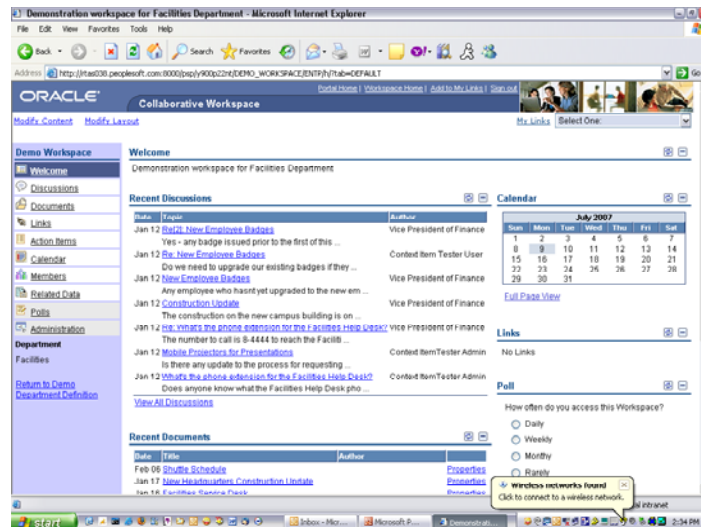
Enterprise Portal is part of Oracle's Applications Unlimited program. This ensures that Enterprise Portal will continue to be enhanced to meet customer's requirements and incorporate evolving portal features.

Oracle's Applications Unlimited commitment protects customers' investments. The Enterprise Portal provides tangible benefits today, while also insuring that customers will continue to reap dividends tomorrow.

Enterprise Portal Distinguishing Feature Detail

Enterprise portal is a functional portal, providing beneficial capabilities not available in framework portals. Here are some of the features that distinguish the Enterprise Portal:

- **Collaborative Workspaces:** Collaborative workspaces enable teams tasked with project and process execution to work together more effectively and efficiently. These workspaces include features such as discussion forums, group calendaring, content authoring and publishing, team events, and action item lists. Customers can easily configure and provide business applications pagelets for consumption in workspaces, enabling users to work with business data in the context of workspaces. Collaborative workspaces can also be created in the *context* of application transactions, allowing users to collaborate on specific tasks or processes such as working on a sales proposal, resolving discrepancies in accounts receivables, managing a customer account, faculty members and students working on research, and so on.



- Built on the PeopleTools Foundation:** Enterprise portal is built on the same architecture and with the same tools as PeopleSoft applications. This provides native integration and single-signon with PeopleSoft applications, and makes configuration and deployment for a PeopleSoft-rich environment much easier than other portals. You can also leverage your firm's skills and experience with PeopleTools, reducing cost and speeding deployment. Like PeopleTools, the Enterprise Portal is database and web server independent.
- Pre-built Portal Packs:** PeopleSoft Application Portal Packs provide an intuitive view of application data and transactions using sets of pre-built pagelets from your PeopleSoft applications. Displayed on your PeopleSoft Enterprise Portal home page, Portal Pack pagelets provide application functionality, reports, dashboards, and related content. Portal packs are role-based and easily deployed to self-service users.
- Standards Support:** Enterprise Portal complies with the latest WSPR and JSR standards and will continue to support these in the future. This means that Enterprise portal can consume standards-compliant content from any publisher, as well as publish WSPR compliant content. Enterprise Portal can interoperate with a great variety of content publishers and consumers, including other portals.
- Pagelet Wizards:** Pagelet Wizards enable user groups to easily customize their portals by configuring new pagelets that meet their needs--without relying on IT assistance.
- Content Aggregation and Management:** Don't forget that the Enterprise Portal is also good at standard portal duties like aggregating and managing content from disparate sources.

Enterprise Portal in Your System Portfolio

The Enterprise Portal is a leading portal product that can be deployed as a corporate portal or as a constituent portal in a federated portal environment. Customers with a

strong PeopleSoft applications portfolio are especially good candidates for the Enterprise Portal. They can leverage synergies in infrastructure and development investments when deploying Enterprise Portal in their environment. Portal's in-context collaboration and content aggregation capabilities can significantly enrich user experience and enhance productivity.

Copyright 2007, Oracle. All Rights Reserved.

This document is provided for information purposes only, and the contents hereof are subject to change without notice. This document is not warranted to be error-free, nor is it subject to any other warranties or conditions, whether expressed orally or implied in law, including implied warranties and conditions of merchantability or fitness for a particular purpose. We specifically disclaim any liability with respect to this document, and no contractual obligations are formed either directly or indirectly by this document. This document may not be reproduced or transmitted in any form or by any means, electronic or mechanical, for any purpose, without our prior written permission.

Oracle, JD Edwards, PeopleSoft, and Siebel are registered trademarks of Oracle Corporation and/or its affiliates. Other names may be trademarks of their respective owners.