

ORACLE BUSINESS INTELLIGENCE APPLICATIONS FOR JD EDWARDS ENTERPRISEONE



KEY BENEFITS OF ORACLE BUSINESS INTELLIGENCE APPLICATIONS

- Reduce costs and risk with prebuilt integration with JD Edwards EnterpriseOne
- Provide each user with timely and in-context information to improve decision-making
- Integrate data from multiple sources to provide business users with a complete view of business operations
- Drive accountability down to departmental managers and provide them daily actual performance
- Accelerate deployment of a combined data warehouse
- Adapt to changing external and internal needs by leveraging, not replacing, existing investments
- Reduce the burden on IT resources with comprehensive user self-service capabilities

Organizations with the ability to transform information into action enjoy a strategic advantage over their competitors. Reduced costs, improved growth, and increased profitability are the results of well-defined business processes driven by information. For many organizations, undertaking a development initiative to integrate a business intelligence (BI) solution with transactional enterprise resource planning (ERP) systems can be challenging and expensive. Oracle Business Intelligence Applications for Oracle's JD Edwards EnterpriseOne are powerful, prebuilt solutions that enable organizations to implement and integrate more quickly, with less risk, and at a fraction of the cost required to build traditional BI solutions.

Gain Integrated and Actionable Business Process Insight

The pace of business has accelerated phenomenally over the past two decades, requiring shorter decision timelines, greater planning precision, and increased transparency with customers and regulators. The evolution of rich internet applications has ushered in an era of pervasive analytics, yet ERP systems remain focused on transactional data entry. To perform with greater accuracy and efficiency, business users at all levels need actionable, relevant data delivered in a timely manner.

Oracle BI Applications are optimized for business users, with dashboards, reports, and metrics built on analytical best practices that provide timely information to enable better decisions, actions, and business processes. Combined with JD Edwards EnterpriseOne's embedded BI control, customers can give users immediate insight relevant to their current business process by embedding Oracle BI Application reports directly into key JD Edwards EnterpriseOne applications.

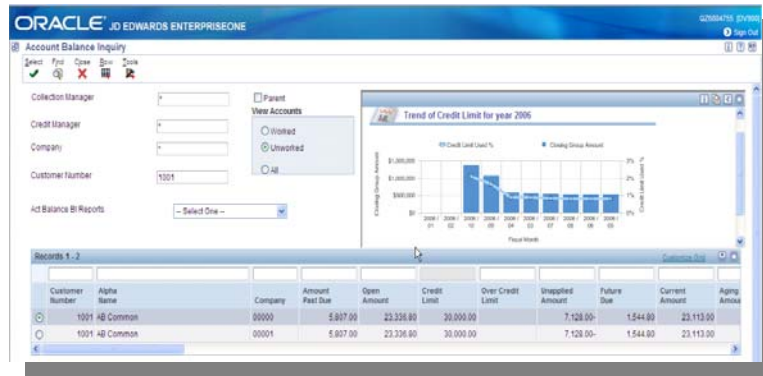


Figure 1. Embedded business intelligence in JD Edwards EnterpriseOne

Delivering enterprisewide business intelligence to stakeholders allows IT the opportunity to focus on more strategic initiatives rather than onerous custom report development. Implementing a BI solution from the ground-up, however, is a major undertaking for IT that can take more than a year. Skill gaps, poorly defined business requirements, internal politics, and budget pressures can cause a BI project to fall short of stakeholder needs and expectations.

Oracle BI Applications significantly reduce the risk and amount of effort JD Edwards customers must expend to rapidly deploy business intelligence that matches JD Edwards EnterpriseOne business processes. Users have prebuilt dashboards and metrics for JD Edwards EnterpriseOne along with a powerful set of self-service BI tools. Simultaneously, IT benefits from packaged extract, transform, and load (ETL) adapters and business logic built specifically for JD Edwards EnterpriseOne, reducing the risk and cost to deploy BI.

Finally, Oracle Business Intelligence Applications are built upon Oracle Business Intelligence Suite, Enterprise Edition Plus—a next generation analytics platform that fully leverages existing data warehouse and business intelligence investments. Oracle Business Intelligence Applications for JD Edwards EnterpriseOne provide organizations with a single secure, extensible, leading BI architecture built to address homogenous datasources.

Business Intelligence In Action: Optimizing Cash Flow

Finance organizations can rely on their ERP accounting system to provide details of each individual accounts payable and accounts receivable transaction. To optimize cash flow by coordinating payables and receivables, however, a broad view of enterprisewide performance indicators can lead to more effective results. For instance, financial analysts can use BI to review overdue accounts payable amounts to decide which suppliers must be paid first in order to avoid delays or interruptions in supply chain operations. Similarly, using BI to drill down into overdue customer balances, financial analysts can identify and take action on the top overdue amounts to increase cash flow.

Select View Pivot Table				
	2001 Q 1	2001 Q 2	2001 Q 3	2001 Q 4
Operating Cash Flow	\$20,372,968,230	\$1,789,030,207	(\$232,792,468)	(\$1,786,917,558)
Financing Cash Flow	(\$21,703,193,139)	(\$3,166,171,434)	\$108,223,494	\$411,347,557
Investing Cash Flow	\$36,018,583	\$642,094	\$376,504	\$378,512
Net Cash Flow	(\$1,294,206,326)	(\$1,376,499,133)	(\$124,192,470)	(\$1,375,191,488)

Figure 2. A cash flow summary report can pull data from a variety of enterprisewide datasources to provide a complete view of cash flow.

Business Intelligence for Oracle’s JD Edwards EnterpriseOne

The Oracle Business Intelligence Applications product family delivers critical BI to JD Edwards EnterpriseOne customers. The data, reports, and metrics enhance customer, supplier, and workforce analysis.

Oracle Financial Analytics

Oracle Financial Analytics provides organizations with greater visibility into the factors that drive revenues, costs, and shareholder value. Through numerous packaged dashboards, Oracle Financial Analytics provides hundreds of powerful financial metrics, alerts, and reports to enable financial professionals and line of business managers to make better decisions, take appropriate action, and measure the results. Further, Oracle Financial Analytics helps reduce the time and cost associated with creating regulatory reports (for example, Sarbanes-Oxley) or periodic financial statements. Without waiting days or weeks to receive a report, managers and front-line staff can analyze cost and revenue information from multiple dimensions, such as product, geography, or customer. A prebuilt JD Edwards EnterpriseOne Adapter for Financial Analytics is now available.

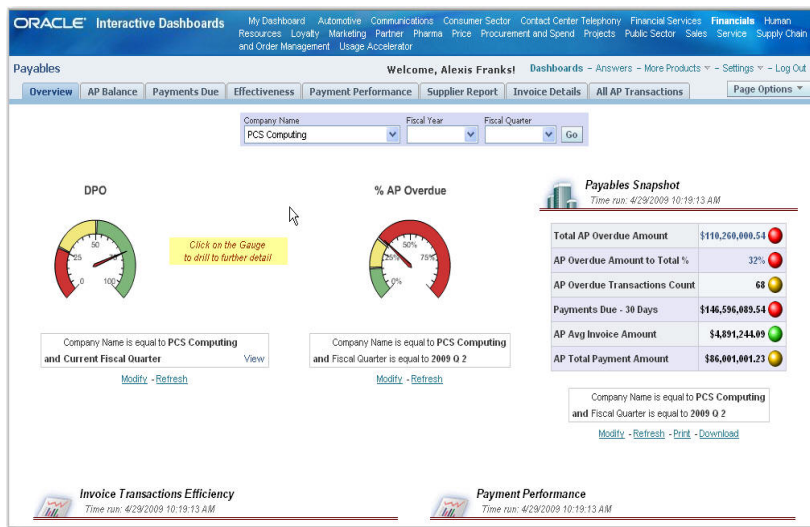


Figure 3. Oracle Financial Analytics includes prebuilt dashboards—like this overview page of a payables dashboard—that deliver timely information to decision-makers.

ORACLE BI APPLICATIONS

Oracle BI Applications provide complete, real-time, and enterprise wide insight for all users, enabling fact-based actions and intelligent interaction. Designed for rapid deployment at a low cost of ownership, Oracle BI Applications are prebuilt solutions that embrace any existing corporate data source and are seamlessly integrated with Oracle's transactional solutions to improve business insight across the organization.

All Oracle Business Intelligence Applications are powered by Oracle Business Intelligence Suite, Enterprise Edition Plus—a high-performance, highly scalable, and highly reliable next generation BI platform that can be used to extend existing analytic solutions to meet any enterprise BI need. Additional information about Oracle Business Intelligence Applications is available at www.oracle.com/goto/obia

Embedded Intelligence to Improve Decisions

Delivering intelligence to users when they need the information most can minimize costly errors, improve efficiency, and create opportunities for process improvement. JD Edwards EnterpriseOne's most current release includes tools for customers to embed Oracle Business Intelligence Application reports directly within a JD Edwards EnterpriseOne application. For example, customers may choose to embed a credit limit trend report directly within the account balance inquiry application in JD Edwards EnterpriseOne, helping users to decide whether a customer's recent transactions warrant an increase or decrease in their credit limit.

Additional Oracle Business Intelligence Offerings

Oracle offers a comprehensive suite of additional BI applications with predefined metrics, dimensions, hierarchies, and dashboards. JD Edwards EnterpriseOne customers can leverage the entire suite of analytical applications using the universal ETL adapter. The Oracle Business Intelligence Applications include the following:

- Oracle Supply Chain and Order Management Analytics
- Oracle Procurement and Spend Analytics
- Oracle Project Analytics
- Oracle Human Resources Analytics
- Oracle Sales Analytics
- Oracle Service Analytics
- Oracle Contact Center Analytics
- Oracle Marketing Analytics
- Oracle Marketing Loyalty Analytics
- Oracle Price Analytics

Summary

Companies worldwide face increased pressure to maintain profitability despite a weak economy. Consequently, companies need to manage their business operations as cost-effectively as possible so they meet their revenue and profitability targets. Oracle Business Intelligence Applications deliver maximum value from existing IT investments by ensuring that pervasive insight helps drive all customer, supplier, and workforce decisions, resulting in lower costs, increased revenue, and greater profitability.



Oracle is committed to developing practices and products that help protect the environment

Copyright © 2009, Oracle and/or its affiliates. All rights reserved.

This document is provided for information purposes only and the contents hereof are subject to change without notice. This document is not warranted to be error-free, nor subject to any other warranties or conditions, whether expressed orally or implied in law, including implied warranties and conditions of merchantability or fitness for a particular purpose. We specifically disclaim any liability with respect to this document and no contractual obligations are formed either directly or indirectly by this document. This document may not be reproduced or transmitted in any form or by any means, electronic or mechanical, for any purpose, without our prior written permission.

Oracle is a registered trademark of Oracle Corporation and/or its affiliates. Other names may be trademarks of their respective owners. 0409