

JD EDWARDS ENTERPRISEONE SERVER MANAGER



KEY FEATURES

- **Lifecycle Management**
 - Consolidated view of all JD Edwards EnterpriseOne servers
 - Standardize system administration processes
 - Simplify key administration activities
 - Improve system compliance
- **Configuration Management**
 - Create a standard configuration
 - Compare configurations to standard configuration
 - Track configuration changes
- **Application Performance Management**
 - Task based security
 - Alert notifications
 - System metrics
 - Log management
 - Search by user

JD Edwards EnterpriseOne Server Manager gives you a central, browser based console to manage and monitor your JD Edwards EnterpriseOne environments. With JD Edwards EnterpriseOne Server Manager you lower your total cost of ownership by decreasing the time to deploy a new Tools release by up to 63 percent. Plus, with a single mouse click you can identify all logs associated with a user for simplified trouble shooting and reduce the time to provision new servers with standard configurations.

The Issue: Multiple Servers. Multiple Environments. Effort to Administer.

Customers typically have multiple servers and environments which sometimes are housed in different locations to meet a business' operational needs. These servers could have different configurations and patch levels, which makes system administration challenging. Unless you have a tool that provides centralized management capabilities, it can be very difficult and time consuming for you to administer a multi-server environment in both a timely and accurate manner.

The Solution: A Centralized Console to Manage Your JD Edwards EnterpriseOne System

Oracle's JD Edwards EnterpriseOne Server Manager gives you a central, browser based console (see screenshot in Figure 1) that lets your administrators monitor and manage every JD Edwards EnterpriseOne server throughout your system, even if the machines are not located in the same building. With this solution you can standardize and simplify processes across your JD Edwards EnterpriseOne topology for:

- **Lifecycle Management** – Server Manager standardizes the process of applying JD Edwards EnterpriseOne Tools releases and updates, regardless of server types. This standardization increase deployment accuracy, reduces the level of effort, and simplifies the entire process.
- **Configuration Management** – All JD Edwards EnterpriseOne configuration files are managed and modified from the central console. This allows system administrators to control access to and prevent unauthorized modifications to system configuration.
- **Application Performance Management** – From the central console, administrators can quickly check on the status and health of all JD Edwards EnterpriseOne servers. This simplification streamlines the correlation of system availability and performance problems.

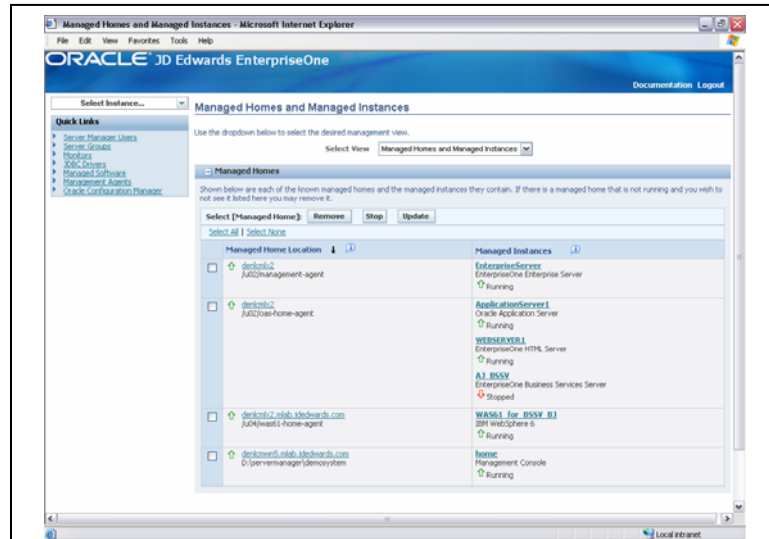


Figure 1. Server Manager provides a central console for every server in your JD Edwards EnterpriseOne system.

Intuitive Approach of Configuration Management

Configuration management with JD Edwards EnterpriseOne Server Manager is user friendly with a metadata driven interface (see example in Figure 2) that defines all configuration attributes with intuitive text, associated helps and valid values for your system. JD Edwards EnterpriseOne Server Manager maintains a history of configuration changes that allows you to understand our configuration, report on configurations changes over time and assist with system compliance.

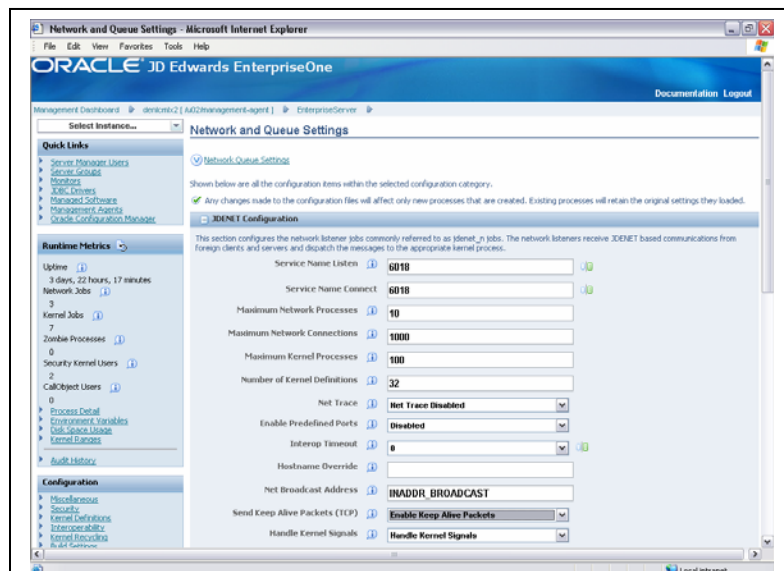


Figure 2. Clear and concise configuration management of your entire JD Edwards EnterpriseOne system.

Simplify Daily Management with Application Performance Management

JD Edwards EnterpriseOne Server Manager simplifies the daily management and monitoring of JD Edwards EnterpriseOne with:

- **System Monitors** – A comprehensive set of availability and performance monitors can be configured to alert administrators when defined thresholds (such as outstanding server request, long running UBEs, and number of simultaneous users) have been exceeded thus allowing administrators to proactively address possible issues.
- **Search by User** – For user specific issues, your administrator can search by user ID to retrieve logs files associated with that ID with a single click. This greatly reduces the level of effort for administrator to resolve user issues.
- **Log Management** – Your administrators can view, retrieve and search all JD Edwards EnterpriseOne log files from JD Edwards EnterpriseOne Server Manager. To further simplify the identification of application server issues, the associated log files are color coded to highlight errors.

Lower Total Cost of Ownership with a Server Manager Made for You

JD Edwards EnterpriseOne Server Manager lowers your total cost of ownership by

- Providing a consolidated view of JD Edwards EnterpriseOne servers;
- Standardizing key system administration processes;
- Simplifying daily administration of JD Edwards EnterpriseOne, and,
- Improving system compliance.

Feature/Function Highlights

- Consolidated view of all JD Edwards EnterpriseOne servers
- Standardize system administration processes
- Simplifies key administration activities
- Create standard configurations
- Track configuration changes
- Compare configurations to standard configuration
- Task based security
- Alert notifications
- System metrics
- Log management
- Search by user

Solution Integration to JD Edwards EnterpriseOne Applications

Oracle offers JD Edwards EnterpriseOne Server Manager effective with JD Edwards Tools 8.97 for JD Edwards EnterpriseOne applications release 8.9 and above.

Copyright 2007 Oracle. All Rights Reserved.

This document is provided for information purposes only, and the contents hereof are subject to change without notice. This document is not warranted to be error-free, nor is it subject to any other warranties or conditions, whether expressed orally or implied in law, including implied warranties and conditions of merchantability or fitness for a particular purpose. We specifically disclaim any liability with respect to this document, and no contractual obligations are formed either directly or indirectly by this document. This document may not be reproduced or transmitted in any form or by any means, electronic or mechanical, for any purpose, without our prior written permission.

Oracle, JD Edwards, and PeopleSoft are registered trademarks of Oracle Corporation and/or its affiliates. Other names may be trademarks of their respective owners. (Revised September 28, 2007 REL)