

# JD EDWARDS ENTERPRISEONE PRODUCTION SCHEDULING



## KEY FEATURES

- Simultaneously considers capacity and calendar constraints on machines, crews and tools
- Material constrained
- Automatic floating bottleneck detection
- Representation of all routing precedence relationships
- Graphical multi-stage production pegging
- Sequence dependent changeover minimization
- Campaign run optimization
- Advanced analytical views (Gantt charts, line graphs & bar charts)
- Intelligent resource offloading between alternates
- Event-based bucket-less scheduling
- Generative and repair based solver capabilities
- Multi-scenario with KPIs for scenario comparisons
- Intuitive graphical model
- Resource dependent operation duration and lot sizes
- Co-products and by-products
- Demand priorities
- Alerts with root cause

*Are you able to sequence orders to best use your production resources? Do you know when to offload production to alternate resources? Do you need to minimize the effect of unplanned production and downtime? Are you able to evaluate the impact of a supply shortage on fill rates? Do you need to support revenue growth using existing production assets? JD Edwards EnterpriseOne Production Scheduling enables you to create detailed schedules that enable you to maximize customer service at the same time as minimizing inventory, changeovers and overtime.*

### **The Issue: Production Scheduling is Complex and Disconnected**

You see the problem everyday on your production floor. Your planners are struggling to keep schedules synchronized with production demands from sales orders and other factory inputs. Your organization's management is demanding more synchronization and coordination with real-time financial, sales and operational data. If your factory floor could have schedules that utilize common enterprise data it would vastly improve your production scheduling process and the entire operation would experience increased margins and fewer product delivery problems.

### **The Solution: Integrated Production Scheduling**

Oracle's JD Edwards EnterpriseOne Production Scheduling is designed for schedulers by schedulers, enables you to take control of your production scheduling problem, and helps you to maximize shop floor throughput while optimizing resource investment. You can optimize the usage of your critical resources, calculate realistic and feasible schedules that the shop floor can actually execute, and easily determine the schedule that best meets your objectives. In addition, you can leverage the out-of-the-box integration with other JD Edwards EnterpriseOne modules to implement quickly and get immediate value.

### **Maximize Throughput and Increase Resource Utilization**

One key to profitable manufacturing is maximizing the utilization of your critical resources. JD Edwards EnterpriseOne Production Scheduling calculates feasible and realistic schedules that consider your key manufacturing constraints. It automatically detects bottlenecks and ensures the flow of production through the bottleneck to maximize the productive throughput while synchronizing all the stages of production. You can also easily identify specific issues and take corrective action by drilling directly to the root cause of the problem.

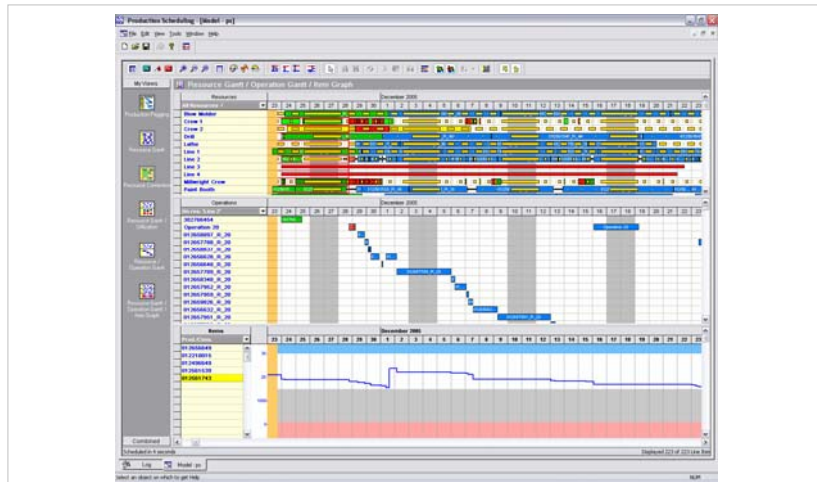


Figure 1. Resource Gantt Chart, Operation Gantt Chart and Item Graph

Often, the key to maximizing utilization and throughput is minimizing unnecessary setup time. Product Scheduling can automatically sequence production to minimize setup time

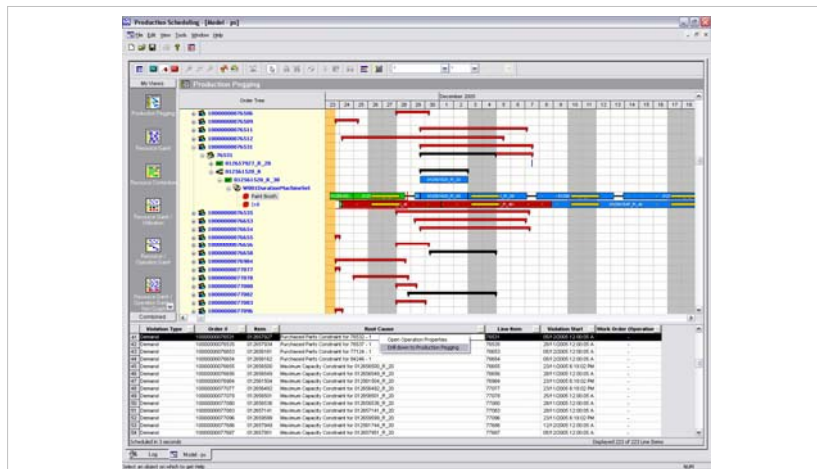


Figure 2. Daily Production Pegging

while maximizing customer service levels. It recognizes when dependencies between products exist that determine the amount of changeover time. Product Scheduling can also automatically determine what quantity of product should be run together to minimize setup while not jeopardizing demand or carrying excessive inventory. This is often called campaign planning, batch planning, or run length optimization which is facilitated through the Repetitive Manufacturing Optimization option.

**Improve Shop Floor Performance**

If your production floor has been given an infeasible schedule, much time is spent expediting around shortages and resource constraints. This typically leads to inconsistent lead times and excess work in process inventory. Production Scheduling enables you to improve your shop floor performance. It provides the shop with a



schedules differ both in delivery performance and cost. As part of the analysis, you can weigh the incremental cost of working overtime against the improvement in delivery to make an informed and intelligent decision on whether or not to work overtime.

**Comprehensively Plan and Schedule Production Seamless Integration**

Production Scheduling is completely integrated with other JD Edwards EnterpriseOne modules to enable you to implement quickly and realize a quick return on investment. Designed for schedulers, not programmers, it is very intuitive and easy to use and automates many of the decisions that schedulers currently do manually.

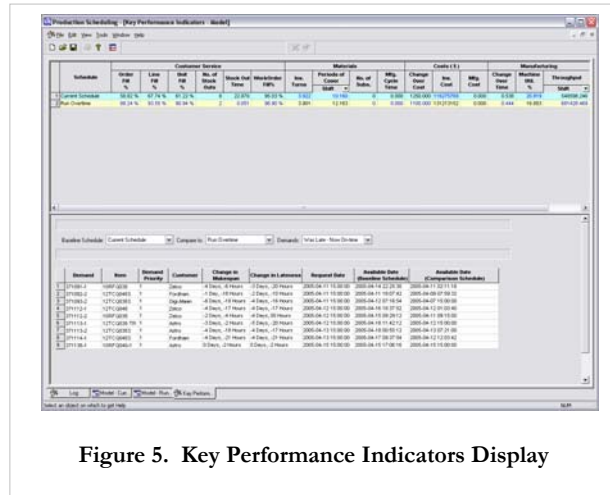


Figure 5. Key Performance Indicators Display

**Incremental Deployment. Get Benefits Quickly.**

You can deploy all JD Edwards EnterpriseOne Supply Chain Planning products incrementally, enabling you to start with a smaller planning footprint quickly, while still leveraging the tight integration once all components are operational. Each additional module requires limited incremental effort to implement since all of the components share a common integration foundation (Supply Chain Business Modeler) and work together seamlessly. If your shop floor throughput poses the most challenges to your business, you can decide to implement Production Scheduling first. Alternatively, you can enable it later as an add-on to your existing implementation of other JD Edwards EnterpriseOne Supply Chain Planning products, leveraging all of your existing setup.

**The Complete Solution for Your Supply Chain Planning**

JD Edwards EnterpriseOne enables you to efficiently manage customer processes, manufacture products, ship orders, collect payments, and more—all from applications that are built with information architecture. This information architecture provides a single definition of your customers, suppliers, employees, and products—all aspects of your business. Whether you implement one module or the entire suite, JD Edwards EnterpriseOne enables you to share unified information across the enterprise so you can make smarter decisions based on greater business insight.

Copyright 2007 Oracle. All Rights Reserved.

This document is provided for information purposes only, and the contents hereof are subject to change without notice. This document is not warranted to be error-free, nor is it subject to any other warranties or conditions, whether expressed orally or implied in law, including implied warranties and conditions of merchantability or fitness for a particular purpose. We specifically disclaim any liability with respect to this document, and no contractual obligations are formed either directly or indirectly by this document. This document may not be reproduced or transmitted in any form or by any means, electronic or mechanical, for any purpose, without our prior written permission.

Oracle, JD Edwards, and PeopleSoft are registered trademarks of Oracle Corporation and/or its affiliates. Other names may be trademarks of their respective owners. (Revised April 13, 2007 REL)