

PEOPLESOFT MANUFACTURING SCORECARD



Improve customer satisfaction.

Increase asset utilization.

Reduce supply chain costs.

In today's competitive manufacturing environment, it is more important than ever to improve efficiency and effectiveness. Supply chain friction points must be removed and visibility into supply chain performance must be increased in order to remain competitive. To do this, companies need a comprehensive solution that enables them to monitor, evaluate, plan, and respond to ongoing changes within their organization and in the market. However, until now, companies have been constrained by supply chain management solutions that only focus on execution with little or no information on past, present, or future performance.

Oracle's PeopleSoft Manufacturing Scorecard provides the real-time production analysis needed to improve the overall adaptability of your supply chain. Consolidated visibility into best-practice key performance indicators (KPIs) can help you manage rising supply chain costs, address changes in your supply chain, and ensure better capacity utilization. With PeopleSoft Manufacturing Scorecard, you can monitor and measure:

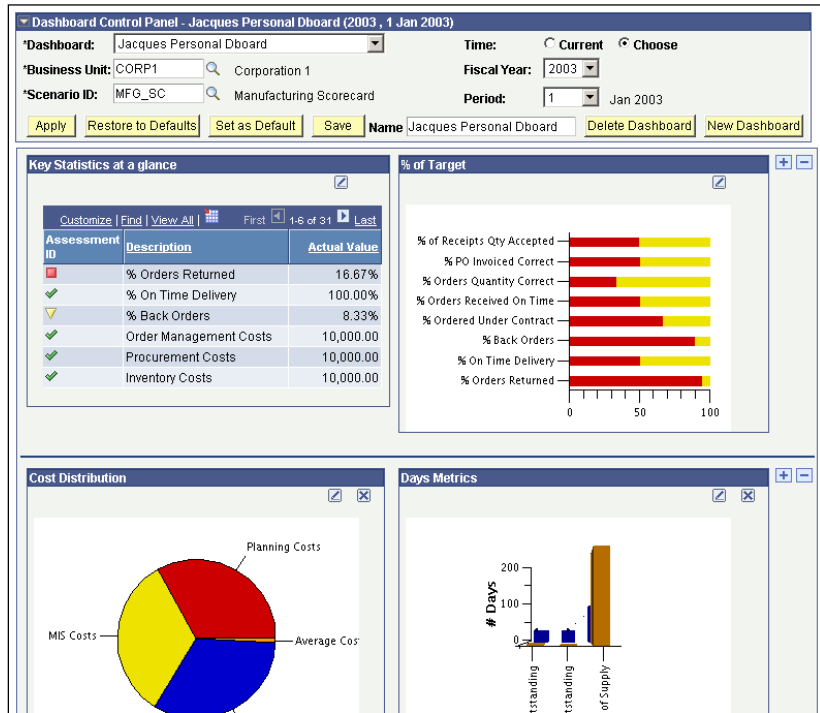
- Flexibility of supply chain and adaptation requirements due to market and demand level changes.
- Product-related costs including direct and indirect materials, labor and factory overhead.
- Comprehensive supply chain costs including execution, administration, and planning.
- Actual lead times to fulfill customer orders.
- Reliability of shipments timing, condition, and completeness.
- Responsiveness of suppliers order fulfillment lead time.
- Assets as measured by the time it takes an investment to flow back into your company and the return received on fixed assets used.

Continuous Performance Measurement

PeopleSoft Manufacturing Scorecard enables you to easily communicate your strategy, prioritize initiatives, determine key performance indicators (KPIs), and continuously monitor performance against your organization's goals. Defined tolerance ranges for selected KPIs will trigger notifications and help identify problem areas if actual results move out of the acceptable range. Equipped with this information, you can quickly adjust your tactics and pull the organization back into alignment with your strategic objectives.

- Provide quick and simplified views of your organization's strategic objectives and associated measures, including history, trends, targets, assessment rules, cause-and-effect relationships, free-form comments, and several other analytical and graphical viewing options.

- Improve your time-to-value by leveraging a comprehensive set of predefined, industry-specific KPIs based on data from Oracle’s PeopleSoft Performance Management Warehouse and other data sources.
- Easily navigate between PeopleSoft Manufacturing Scorecard and Oracle’s PeopleSoft Supply Chain Warehouse for detailed analysis.



PeopleSoft Manufacturing Scorecard

Evaluate and communicate supply chain objectives and key performance measurements across the extended enterprise.

Enterprisewide Performance Measurement

With performance management and scorecard methodologies growing in popularity, organizations are asking for scorecards that can be used by everyone in the organization, not just senior-level management. PeopleSoft Manufacturing Scorecard makes it easy to distribute individual scorecards to everyone in the enterprise, so that all the users in the organization can see how they are personally contributing to the overall success of the company. It leverages the PeopleSoft Performance Management Warehouse foundation to ensure a secure, integrated, and scalable infrastructure for deploying scorecards to a large audience.

- Clearly articulate and communicate strategic objectives through the use of strategy maps and by understanding cause-and-effect relationships.
- Ensure a consistent view of performance measures by leveraging and sharing the rich content of the PeopleSoft Performance Management Warehouse.

- Drive accountability through your organization by cascading and communicating objectives through the use of hierarchical KPIs and user-defined targets and KPIs.

Personalized Performance Measurement

You may like to view performance in a pie chart, whereas your counterpart in another department prefers a grid. PeopleSoft Manufacturing Scorecard provides a user-friendly way to view and organize KPIs to suit each individual's needs. Two companion features, KPI Dashboards and the Dashlet Wizard, allow non-technical users to select from a rich library of fully customizable chart types and organize them into a dashboard. As a result, employees can view only the KPIs that matter to them, in a way that makes the most sense.

- Enable non-technical users to create a dashboard of metrics that matter to them by using a simple, three-step wizard.
- Share dashlets with other users through the PeopleSoft portal, or with any other Web Services for Remote Portlets (WSRP)-compliant portal vendor.

Supply Chain Management Metrics and KPIs

PeopleSoft Manufacturing Scorecard is designed to support the Supply Chain Council's Supply Chain Operational Reference (SCOR) model by incorporating its version 6.0 metrics. PeopleSoft Manufacturing Scorecard also supports two complimentary methodologies—Lean Manufacturing and Theory of Constraints (TOC)—by packaging several key performance measures and organizing them within a framework that provides real-time visibility with strategic alignment. PeopleSoft Manufacturing Scorecard provides the following metrics and KPIs to deliver the information you need in order to improve the adaptability of your supply chain.

- Achieve New Delivery Rate
- Achieve New Material Supply
- Achieve New Production Rate
- Average Item Cost (Unit Cost per Item/BU)
- Average Item Inventory
- Average Item Use per Month
- Building Costs
- Cash-to-Cash Cycle Time
- Cost of Benefits
- Cost of Goods Sold
- Customer Satisfaction Score
- Days of Inventory Supply
- Percentage of Correct Orders Received
- Percentage of On-Time Delivery
- Percentage of Orders Received On Time
- Percentage of Perfect Order Fulfillment
- Percentage of POs Invoiced Correctly
- Percentage of Receipts Quantity Correct
- Percentage Returned
- Planning Costs
- Procurement Costs

- Days Payable Outstanding
- Days Sales Outstanding
- Equipment Costs
- Finished Goods Cost
- Insurance Costs
- Interest Costs
- Inventory Costs
- Inventory Turns
- Investments
- Lease Expenses
- Material Cost
- MIS Costs
- Net Profit
- Number of On-Time Shipments
- Number of Orders Invoiced Correctly
- Number of Orders Received
- Number of Orders Received on Time
- Number of Orders Received Quantity Correct
- Number of Returned Orders
- Number of Shipments Made in Full
- Number of Shipments with Back Orders
- Number of Shipments with Errors
- Operating Expense
- Order Fulfillment Lead Time
- Order Management Costs
- Packaging Materials
- Percentage of Backorders
- Productivity
- Purchase Amount Under Contract
- Purchased Quantity Accepted
- Raw Material Costs
- Respond to Business Change
- Return on Investment
- Returned Product Costs
- Salary and Wage Costs
- Sales Commissions
- Shipment Days Late
- Shipment Value
- Shipments On Time and Quantity Correct
- Shipping Costs
- Sum of Shipment Lead Times
- Supply Chain Adaptation Time
- Supply Chain Asset Value
- Taxes
- Throughput
- Throughput Dollar Days
- Total Number of Purchase Orders
- Total Number of Shipments
- Total Order Quantity Received
- Total Product Profit
- Total Product Revenue
- Total Purchase Amount
- Total Sales
- Total Supply Chain Costs
- Total Variable Expense
- Utilities Costs
- Warranty Costs
- Work In Progress Costs

About PeopleSoft Enterprise Performance Management

PeopleSoft Manufacturing Scorecard is part of Oracle's PeopleSoft Enterprise Performance Management (EPM) suite, an integrated suite of analytic applications that enables organizations to drive performance by aligning the right information and resources with strategic objectives. PeopleSoft EPM helps managers formulate strategies for profitable growth, align strategies with operational plans, actively monitor day-to-day operations, and collaborate across the enterprise.

Copyright 2005 Oracle. All Rights Reserved.

This document is provided for information purposes only, and the contents hereof are subject to change without notice. This document is not warranted to be error-free, nor is it subject to any other warranties or conditions, whether expressed orally or implied in law, including implied warranties and conditions of merchantability or fitness for a particular purpose. We specifically disclaim any liability with respect to this document, and no contractual obligations are formed either directly or indirectly by this document. This document may not be reproduced or transmitted in any form or by any means, electronic or mechanical, for any purpose, without our prior written permission.

Oracle, JD Edwards, and PeopleSoft are registered trademarks of Oracle Corporation and/or its affiliates. Other names may be trademarks of their respective owners.