

PEOPLESOFT SUPPLY CHAIN WAREHOUSE



Run an efficient supply chain.

Adapt to changing customer needs.

Maximize supplier relationships.

When it comes to your supply chain, you cannot afford any weak links. Are suppliers delivering on time or are you left scrambling to meet schedules? Can you electronically account for every screw in your inventory or do you need to rely on physical counts to ensure accuracy? Can you quickly identify and respond to new demand patterns?

Oracle's PeopleSoft Supply Chain Warehouse provides a consolidated view of your entire supply chain from procurement processes and inventory turns to production schedules and manufacturing efficiency. With this comprehensive view, you can analyze your performance and make adjustments before problems impact your profitability and ability to maximize new opportunities. PeopleSoft Supply Chain Warehouse enables you to:

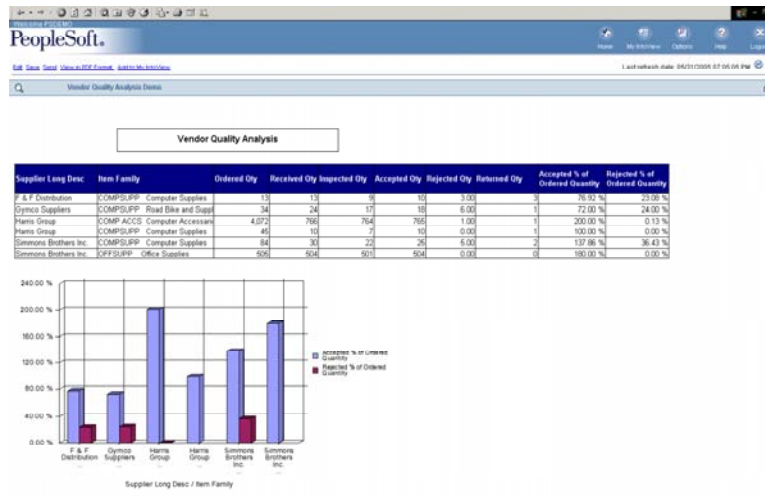
- Monitor performance using pre-packaged, business-relevant measures, complex derived metrics, and analysis and reporting templates tailored to individual roles, functions, and industries.
- Run operational reports and conduct ad-hoc queries with leading business intelligence (BI) tools.
- Analyze historical and current data, drill down from summary analytics to detailed reports, and perform trending via time-series analysis.
- Implement closed-loop communication of critical information to your operational system.
- Integrate with PeopleSoft Enterprise, JD Edwards EnterpriseOne, and JD Edwards World applications.

A Powerful Foundation for Supply Chain Decisions

PeopleSoft Supply Chain Warehouse provides a powerful foundation for running an efficient, cost-effective supply chain. PeopleSoft Supply Chain Warehouse offers the following content-specific data marts that can be deployed together for a complete, integrated analytic platform or deployed modularly to meet your specific business and budgetary requirements. You can also expand on this foundation by adding additional PeopleSoft Supply Chain Analytics applications including PeopleSoft Activity-Based Management, Manufacturing Scorecard, and Supplier Rating System.

PeopleSoft Fulfillment and Billing Mart

PeopleSoft Fulfillment and Billing Mart track customers, orders, invoices, returns, and shipping transactions to help you evaluate your order-to-cash processes and deliver high-quality products on time. Use Fulfillment and Billing Mart to hone your future marketing and product development initiatives, analyze product sales by channel and region, and assess your fulfillment rates to ensure that you stay in sync with manufacturing capabilities.



PeopleSoft Procurement Mart

Get a complete picture of your supplier performance.

PeopleSoft Inventory Mart

PeopleSoft Inventory Mart enables you to analyze inventory accuracy, demand, movement, and turns, so you can shave excess without endangering your flexibility. Use Inventory Mart to further limit inventory costs by ensuring that you meet the service levels required by your customers.

PeopleSoft Manufacturing Mart

PeopleSoft Manufacturing Mart provides visibility into the cost, reliability, timeliness, and efficiency of your manufacturing operations so you always make the most accurate decisions on plant, equipment, and production investments. Use Manufacturing Mart to efficiently analyze production schedules, accurately forecast demand across multiple plants and production line, determine planned production downtime and product availability, calculate scrap costs for plant-level items, and capture production lead times by work order.

PeopleSoft Procurement Mart

PeopleSoft Procurement Mart captures information about buyers, requisitions, purchase orders, shipments, and product quality, giving you a complete picture of buyer and supplier performance. Use Procurement Mart to expose inefficiencies and problems in your procurement process and supply base, reduce procurement costs, and increase customer satisfaction.

PeopleSoft Spend Mart

PeopleSoft Spend Mart provides full visibility into the source-to-settle process to help you to drive down unit costs without sacrificing product and service quality. Use Spend Mart to maximize contract negotiations by leveraging supplier performance statistics. Assess the spending patterns of all your divisions to identify opportunities for solidifying supplier relationships or for building new ones. You can also use Spend Mart to isolate maverick spending, excessive purchase price variances, and contract compliance issues.

PeopleSoft Supply Chain Planning Mart

Supply Chain Planning Mart enables you to analyze how your actual order fulfillment, purchasing, production, interunit transfers, inventory levels, and capacity utilization aligns or deviates from your supply chain plan, so you can make the appropriate adjustments to keep your operations running efficiently. Use Supply Chain Planning Mart to ensure that you have the right supply of materials at the right place and time—and at the lowest cost.

Flexible Information Access

With EPM 9.0, PeopleSoft Supply Chain Warehouse delivers packaged reports for Oracle BI Standard Edition (Discoverer) and a security bridge to Oracle BI Enterprise Edition along with role-based dashboard templates. These two BI offerings greatly enhance PeopleSoft Supply Chain Warehouse as an end-to-end analytic solution and reduce total cost of ownership. PeopleSoft Supply Chain Warehouse also supports third party BI tools, including those from Cognos, MicroStrategy, and Business Objects.

With these flexible information access tools and PeopleSoft Supply Chain Warehouse, knowledge workers, business analysts, and managers can perform sophisticated business analysis with ad-hoc querying and reporting, personalized scorecards and dashboards, multidimensional analysis and exploration, and formatted production-style reports.

Single, Analytics Framework

PeopleSoft Supply Chain Warehouse is built on Oracle's PeopleSoft EPM Foundation, a single analytics framework that provides IT organizations with one platform and toolset from which to manage and support the warehouse. PeopleSoft EPM Foundation includes leading extract, transform, and load (ETL) tools, powerful metadata management tools, multi-currency and multi-language support, and built-in security features that enable unparalleled flexibility, openness, and modularity.

About PeopleSoft Enterprise Performance Management

PeopleSoft Supply Chain Warehouse is part of Oracle's PeopleSoft Enterprise Performance Management (EPM) suite, an integrated suite of analytic applications that enables organizations to drive world-class performance by aligning the right information and resources to strategic objectives. PeopleSoft EPM helps managers formulate strategies for profitable growth, align strategies with operational plans, actively monitor day-to-day operations, and collaborate across the enterprise.

Predefined Facts and Dimensions

PeopleSoft Supply Chain Warehouse includes six data marts that deliver more than 300 predefined facts and dimensions.

Fulfillment and Billing Mart

Facts

Fulfillment

- Bill-back Allowance
- Discount
- Extended Cost
- Extended Discount
- Extended Price
- Lead Time Variance
- Line Count
- List Amount
- List Price
- Net Book Cost
- Net Booked Amount
- Net Booked Backordered Quantity
- Net Booked Cancelled Quantity
- Net Booked Discount
- Net Booked Quantity
- Net Booked Shipped Quantity
- Net Price
- Number of Days for Deliver to Return
- Number of Days for Order to Cash
- Number of Days for Order to Deliver
- Number of Days for Order to Invoice
- Number of Days for Order to Pick
- Number of Days for Order to Ship
- Number of Days for Pick to Ship
- Number of Days for Schedule to Ship
- Number of Days for Ship to Deliver
- Order Amount
- Quantity Backordered
- Quantity Cancelled
- Quantity Ordered
- Quantity Shipped
- Quoted Lead Time
- Received Line Count
- Sales Order Return Amount
- Sales Order Return Price
- Sales Order Return Quantity
- Ship Cost
- Ship Price
- Shipping Line Count
- Unit Cost
- Unit Discount
- Unit List Price
- Unit Price

Billing

• Discount Amount	• Tax Amount
• Gross Amount	• Transaction Quantity
• Net Amount	• Unit Amount
• Surcharge Amount	

Dimensions	
<i>Fulfillment</i>	
• Business Unit	• Market Program
• Carrier	• Market Segment
• Channel	• Order Type
• Currency	• Partner
• Customer	• Product
• Date/Calendar	• Reason Code
• Employee	• Status
• Item	• Time
• Language	
<i>Billing</i>	
• Activity	• Market Program
• Analysis Type	• Market Segment
• Base Currency	• Opportunity
• Benefits Source	• Partner
• Bill Status	• Product
• Bill Type	• Reporting Currency 1
• Channel	• Reporting Currency 2
• Customer	• Resource
• Date/Calendar	• Sales Order Type
• EPM Business Unit	• Sales Organization
• GL Business Unit	• Transaction Currency
• Inventory Item	• Unit of Measure
Dimensions	
<i>Benefits</i>	
• Benefit Plan	• Currency
• Benefits Source	• Date/Calendar
• Business Unit	• Health Benefit
• Coverage Code	• Person
• Coverage Election	• Savings Plan

Inventory Mart**Facts**

- Absolute Adjusted Cost
- Absolute Adjusted Quantity
- Adjusted Cost
- Adjusted Quantity
- Count Quantity
- Cycle Event Count
- Demand
- Hold Quantity
- Inter-Unit Transfer Cost
- Inter-Unit Transfer Quantity
- Issued
- Issued Quantity
- Ledger Extended Cost
- Ledger Sum Amount
- Ledger Sum Quantity
- On-Hand
- Open Quantity
- Primary Unit of Measure
- Primary Unit of Measure Cost
- Quantity 1 Other Primary Units
- Quantity 2 Other Primary Units
- Quantity Hard Committed
- Quantity on Backorder
- Quantity on Future Commit
- Quantity on Hand Cost
- Quantity on Loan to Manufacturing
- Quantity on Purchase Order
- Quantity on Work Order Hard Commit
- Quantity on Work Order Receipt
- Quantity on Work Order Soft Commit
- Quantity Other Purchasing
- Quantity Soft Committed
- Received
- Rejected Quantity
- Restricted Quantity
- Supply Quantity
- Transaction Demand Count
- Transaction Issue Count
- Transaction Shipping Line Count
- Transaction Unit Count
- Unit Cost
- Units in Inspection
- Units in Transit

Dimensions

- Business Unit
- Currency
- Date/Calendar
- Inventory Location
- Item
- Language
- Lot
- Reason Code

Manufacturing Mart**Facts**

- Actual Amount
- Actual Run Labor
- Actual Run Machine
- Actual Units Primary
- Completed Amount
- Completed Units Primary
- Current Amount
- Current Units Primary
- Date Work Order Completed
- Date Work Order Ordered
- Date Work Order Requested
- Hours Worked
- Part List Quantity Available
- Part List Quantity Ordered Primary
- Planned Amount
- Planned Units Primary
- Quantity Order Primary
- Quantity Scrapped Primary
- Quantity Shipped Primary
- Resource Unit
- Scrapped Amount
- Scrapped Units Primary
- Standard Amount
- Standard Capacity
- Standard Move Hours
- Standard Queue Hours
- Standard Run Labor
- Standard Run Machine
- Standard Setup Labor
- Standard Units Primary
- Work Center Efficiency
- Work Center Utilization

Dimensions

- Business Unit
- Category
- Cost Type
- Date/Calendar
- Dispatch Group
- From Grade
- Hour Type
- Item
- Language
- Operation Type
- Parent Child Relationship
- Planner
- Prime Load Code
- Supervisor
- Time Basis Code
- Variance Flag
- Work Date
- Work Status
- Work Type

Procurement Mart**Facts**

- Amount Accepted
- Amount Closed
- Amount Open
- Amount Received
- Amount Rejected
- Date Purchase Order
- Days from PO Dispatch to Last Receipt
- Days from Purchase Order Dispatch to Last Receipt
- Days from Receipt to Last Voucher
- Days from Requisition Approval to Last PO Dispatch
- Days from Requisition Creation to Approval
- Days from Voucher to Last Payment
- Expected Lead Time
- Invoice Age
- Invoice Entered Age
- Invoice Last Update Age
- Lead Time
- Lead Time Planned
- Line Extended Price
- Line Fulfillment Status
- Ordered Unit Cost Variance
- Paid to Date
- Price Requested
- Primary Unit of Measure
- Primary Unit of Measure Units
- Purchase Order Amount Returned
- Purchase Order Freight Amount
- Purchase Order Merchant Amount
- Purchase Order Price
- Purchase Order Quantity
- Purchase Order Quantity Returned
- Purchase Order Sales Tax Amount
- Purchase Order Ship Line Count
- Quantity Accepted
- Quantity Inspected
- Quantity Rejected
- Quantity Requested
- Receipt on Schedule Status
- Receipt Amount Paid to Date
- Receipt Unit Cost
- Standard Unit Item Standard Unit Cost Variance
- Unit Cost
- Units Adjusted
- Units Closed
- Units on Hold
- Units on Hold Amount
- Units Open
- Units Open Amount
- Units Ordered
- Units Received
- Units Relieved
- Units Relieved Amount
- Units Returned
- Units Reworked
- Units Scrapped
- Units Stocked
- Voucher Amount

Dimensions

- Account
- Business Unit
- Buyer
- Carrier
- Channel
- Currency
- Date/Calendar
- Department
- Item
- Language
- Location
- Lot
- Order Line Type
- Order Type
- Reason Code
- Status
- Subledger
- Supplier

Spend Mart**Facts**

- Payment Amount
- Payment Count
- Payment Discount
- Purchase Order Price
- Voucher Line Count
- Voucher Price
- Voucher Quantity

Dimensions

- Business Unit
- Buyer
- Calendar/Date
- Carrier
- Contract
- Currency
- Internal Commodity Code
- Item
- Language
- Ledger Type
- Line Type
- Payment Instrument
- Ship-to-Location
- Status
- Supplier
- UNSPSC

Supply Chain Planning Mart

Facts

- Actual Ending Quantity
- Actual PO Line Quantity
- Actual Production Quantity
- Actual Shipped Quantity
- Actual Transfer Quantity
- Actual Unit Cost
- Actual Voucher Cost
- Actual Voucher Quantity
- Actualized Utilized CapacityPay Increase
- Planned Ending Quantity
- Planned Production Quantity
- Planned Purchase Quantity
- Planned Shipped Quantity
- Planned Transfer Quantity
- Planned Utilized Capacity
- PO Purchase Price
- Production Capacity
- Requested Shipped Quantity

Dimensions

- Business Unit
- Currency
- Customer
- Date/Calendar
- Item
- Language
- Product
- Sales Channel
- Supplier
- Work Center

Copyright 2004, 2005, 2006 Oracle. All Rights Reserved.

This document is provided for information purposes only, and the contents hereof are subject to change without notice. This document is not warranted to be error-free, nor is it subject to any other warranties or conditions, whether expressed orally or implied in law, including implied warranties and conditions of merchantability or fitness for a particular purpose. We specifically disclaim any liability with respect to this document, and no contractual obligations are formed either directly or indirectly by this document. This document may not be reproduced or transmitted in any form or by any means, electronic or mechanical, for any purpose, without our prior written permission.

Oracle, JD Edwards, and PeopleSoft, Siebel are registered trademarks of Oracle Corporation and/or its affiliates. Other names may be trademarks of their respective owners.