

# FUSION FINANCIALS INTELLIGENCE FOR PEOPLESOFT ENTERPRISE



## KEY BENEFITS

### A POWERFUL FOUNDATION FOR WORLD-CLASS FINANCE

- Established operational excellence for corporations in the areas of payables, receivables, contracts, projects, expenses, and revenue

### ROLE-BASED FINANCIAL INSIGHT

- Pre-packaged role-based dashboards with out-of-the-box configurable, action-driven analytics

### TIGHT INTEGRATION WITH TRANSACTIONAL APPLICATIONS

- Delivered integration with PeopleSoft Enterprise Applications for optimal user experience

### LOWER TOTAL COST OF OWNERSHIP(TCO) & RAPID DEPLOYMENT

- Pre-built data extractions, transformations, security, and a unified common business metadata layer maximize your previous PeopleSoft investments in the shortest time at the lowest cost

### EXTENSIBILITY & SCALABILITY

- Market leading BI technologies for superior configurability and flexibility across PeopleSoft, Oracle, and third party data sources

*Fusion Intelligence for PeopleSoft Enterprise gives you the power to extend your existing investments in PeopleSoft Enterprise Performance Management (EPM) while putting you on the path to next generation technologies. By leveraging the robust dashboarding and ad-hoc reporting capabilities provided by Oracle's market-leading BI platform, Oracle Business Intelligence Enterprise Edition, you benefit from a complete, end-to-end, integrated business intelligence and reporting solution.*

### Pervasive Insight for More Effective Actions, Decisions, and Processes

When it comes to your company's financial health, there is no room for error. Can you quickly access accurate, up-to-date cash flow and income data to make informed decisions about strategic initiatives and capital investments? How do your internal business processes compare to best practices in the areas of payables, receivables, contracts, projects, expenses, and real estate? Do you have a clear understanding of the factors driving your profitability and performance?

Oracle's Fusion Financials Intelligence for PeopleSoft Enterprise delivers a highly integrated, end-to-end business intelligence and reporting solution from Oracle, enabling you to monitor performance and analyze trends across all your financial data. With this multidimensional view of your company's financial health, you always know where you stand—and why—so you can take immediate action on issues that directly influence profitability. Fusion Financials Intelligence for PeopleSoft Enterprise enables you to:

- Monitor performance using pre-packaged, business-relevant measures, complex derived metrics, and analysis and reporting templates tailored to individual roles, functions, and industries.
- Run operational reports and conduct ad-hoc queries with leading business intelligence (BI) tools.
- Analyze historical and current data, drill down from summary analytics to detailed reports, and perform trending via time-series analysis.
- Implement closed-loop communication of critical information to your operational system.
- Integrate with PeopleSoft Enterprise, JD Edwards EnterpriseOne, and JD Edwards World applications.

### **A Powerful Foundation for World-Class Finance**

Fusion Financials Intelligence for PeopleSoft Enterprise provides a powerful foundation for monitoring financial performance and taking immediate action on issues that most directly influence profitability. Fusion Financials Intelligence for PeopleSoft Enterprise offers 6 content-specific analysis functional areas that can be deployed together for a complete, integrated analytic platform or deployed modularly to meet your specific business and budgetary requirements. You can also expand on this foundation by adding other PeopleSoft Financial Analytics applications including PeopleSoft Activity-Based Management, Funds Transfer Pricing, Global Consolidations, and Planning and Budgeting.

### **Role-Based Financial Insight**

Fusion Financials Intelligence for PeopleSoft Enterprise includes a Profit and Loss dashboard that provides an overview of key profit & loss metrics by chart of accounts, business unit, department and time. Data is sourced from the General Ledger module to enable timely monitoring of financial performance with an operational snapshot of key financial items. Reports include performance variances against targets with a comparative view of actual xTD numbers against prior-year results, budget and forecast. Additionally, the dashboard offers alerting and guided navigation functionality so that corporate executives can capture potential revenue misses and expense overruns for taking corrective action.

The Profit and Loss dashboard is comprised of the following pre-defined pages. Access to the dashboard pages can be associated with user roles, thus providing information that is secured and relevant to the job functions of an individual.

#### **Profit and Loss Overview**

The Overview page provides an at-a-glance analysis of financial performance trends of key profit & loss statement items – Revenue, COGS, Gross Margin %, Expenses, Operating Margin % and Operating Income. This dashboard page is the default that provides insight into the key information that financial managers and executives need to ensure the business is performing well and financial goals and objectives are being met.

#### **Actual vs. Prior/Budget/Forecast**

The Actual vs. Prior/Budget/Forecast page provides in-depth, comparative analysis of Revenue, COGS and Expenses. Each summary region presents to the financial user a comparative view of current actual, against prior actual (Y-to-Y), budget and forecast for the selected parameter values. Drilldown into more granular reports are pre-packaged as well. The 'Account Detail' report provides aggregate amounts by chartfield and account. The 'Journal Listing' report provides the most granular form of financial reporting. Users should be able to get a detailed listing of journal entries that make up the account summary numbers from above. From the 'Journal Listing' report, users can perform drill-into OLTP (PeopleSoft

Financial Management applications) from individual journals to view complete journal details.

### Financial Performance Trend

The Financial Performance Trend page provides historical performance perspective (trending) of key financial metrics - Revenue, COGS, Expenses and Operating Income.

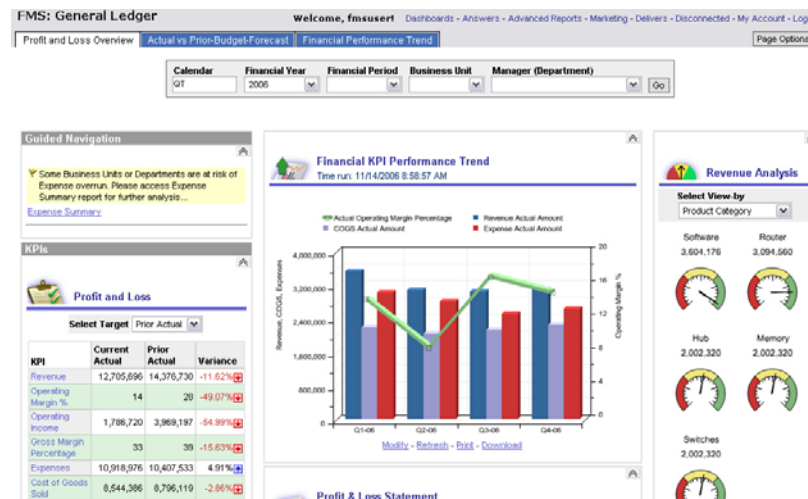


Figure 1. Fusion Financials Intelligence for PeopleSoft Enterprise – Profit and Loss Dashboard

### Tight Integration with Transactional Applications

Fusion Financials Intelligence for PeopleSoft Enterprise provides seamless interaction with PeopleSoft Financial Management Solutions to drive insight to action. Guided drill path capability is built into the analytic model that allows users to view aggregated data and to understand trends. Furthermore, financial users can investigate anomalies, exceptions or problems by drilling down to lower levels in a hierarchy that is part of a multidimensional query. Finally, users can drill through to the underlying transactional system to resolve potential issues or facilitate solutions to existing problems.

### Lower Total Cost of Ownership & Rapid Deployment

Fusion Financials Intelligence for PeopleSoft Enterprise provides integration with the market-leading Oracle Business Intelligence Enterprise Edition (OBIEE). The user-friendly dashboarding and ad-hoc reporting capabilities of OBIEE allow financial users to easily create their own dashboards and reports while minimizing administration and support costs. Through Oracle BI Answers—the dashboard authoring component of OBIEE—users can select relevant metrics and dimensional attributes from the metadata catalogue to create their own reports or dashboards. Oracle BI Answers also supports a wide variety of charting and display options, making the user analysis experience highly intuitive and flexible. Additionally, the underlying pure Web architecture provides a zero-install Web client platform that enables rapid deployment to thousands of users.

Fusion Financials Intelligence delivers six data marts with pre-integrated analytic content that users can leverage to create or modify dashboards that meet their specific business needs. Pre-built data extractions and transformations in the PeopleSoft Financials Warehouse ensure the highest level of data quality and integrity. The six data marts included in the release are:

### **General Ledger and Profitability Mart**

The General Ledger and Profitability Mart helps finance organizations analyze their organization's assets, liabilities, equity, and profit and loss position to better understand the factors that influence profitability. Use the General Ledger and Profitability Mart to produce financial statements, manage budget-to-actuals variance, and determine which customers, products, and channels are most profitable. The pre-integrated facts and dimensions for General Ledger and Profitability are:

#### **Facts**

- Aggregated Balance
- Journal Entries
- Period Balances
- Profitability Analysis
- Consolidation Ledger
- Flows

#### **Dimensions**

- Activity-Based Manager Object
- Account
- Alternate Account
- Book Code
- Budget Reference
- Business Unit
- Business Unit Affiliate
- Business Unit Composite
- Business Unit Multifunction
- Channel
- Chartfield1
- Chartfield2
- Chartfield3
- Class Field
- Currency Attributes
- Customer
- Department
- Detail Period
- Dimension1
- Dimension2
- Dimension3
- Documents Details
- Fund
- Fund Affiliate
- Global Consolidation Ledger Source
- Global Consolidation Flow Code
- Global Consolidation Flow Source
- GL Adjustment Type
- GL Offset
- Journal Source
- Ledger
- Operating Unit
- Operating Unit Affiliate
- Pattern Day

- Pattern Day Journal Date
- Pattern Year
- Performance Business Unit
- Person
- Product
- Profitability Source
- Program Fdm
- Project
- Relate Last Detail Period
- Scenario
- Statistics Code
- Subledger
- Subsidiary

### Receivables Mart

The Receivables Mart allows you to view customer payments, balances, and write-offs, and perform multidimensional analysis against your receivables activities and information. View how much is due from each of your customers, access account-level transaction activities, and analyze customer credit worthiness to minimize your financial risk. The pre-integrated facts and dimensions for Receivables are:

#### Facts

- Account Entries
- Aging Process
- Credit Limit
- Customer and Vendor Netting
- Customer Ledger
- Days Sales Outstanding
- Items and Receipts

#### Dimensions

- Address Book (AB) Master Alternate Payee
- Account
- Accounting Date
- Aging Category
- Alternate Account
- AR Collector
- AR Credit Analyst
- AR Deduction Manager
- AR Document Type
- AR Item Transaction Status
- AR Item transaction Type
- AR Payment Transaction Status
- AR Specialist
- Bank Account
- Bank Account Receipt
- Bill Customer
- Book Code
- Budget Reference
- Business Unit
- Business Unit Affiliate
- Business Unit AR
- Business Unit Composite
- Business Unit General Ledger
- Business Unit General Ledger Receipt

- Chartfield1
- Chartfield2
- Chartfield3
- Class Field
- Collect Status
- Credit Class
- Credit Risk
- Currency Attributes
- Customer
- Day Close Date
- Day Discount Due Date
- Day Due Date
- Day GL Date
- Day Invoice Date
- Day Notify Payment Date
- Day Post Date
- Day Statement Date
- Deduction Status
- Department
- Detail Period
- Discount Due1 Date
- Discount Due2 Date
- Dispute Status
- Document Details
- Entry Reason Type
- Fund
- Fund Affiliate
- GL Adjustment Type
- GL Offset
- Journal Source
- Ledger
- Operating Unit
- Operating Unit Affiliate
- Pattern Day Journal Date
- Payment Method
- Payment Method Receipts
- Payment Status
- Payment Terms
- Person
- Product
- Program Fdm
- Project
- Receipt Accounting Date
- Receipt Due Pay Date
- Receipts Transaction Date
- Remit Customer
- Sales Org1
- Sales Org2
- Sales Person
- Scenario
- Ship Customer
- Sold Customer
- Statistics Code
- Subledger
- Supplier
- Tenant
- Transaction Date
- Unit

## Payables Mart

The Payables Mart provides information about suppliers, vouchers, match exceptions, and payments to help you closely manage your cash position. Use the Payables Mart to analyze and report on the performance of your suppliers and Payables department, and negotiate better supplier contracts. The pre-integrated facts and dimensions for Payables are:

### Facts

- Account Entries
- Voucher Match Exceptions
- Aging Process
- Vouchers and Payments
- Ledger

### Dimensions

- Account
- Business Unit AP
- Accounting Date
- Match Rule
- Address Book Master Originator
- Operating Unit
- Address Book Master Payee
- Operating Unit Affiliate
- Aging Category
- Payment Accounting Date
- Alternate Account
- Payment Date
- AP Document Type
- Payment Due Pay Date
- AP Document Type Payment
- Payment Method
- AP Operator
- Payment Status
- AP Payment Operator
- Payment Terms
- AP Payment Transaction Status
- Payment Transaction Date
- AP Payment Transaction Type
- Person
- AP Posting Status
- Person AP Operator
- AP Posting Status Payment
- Product
- AP Voucher Transaction Status
- Program Fdm
- AP Voucher Transaction Type
- Project
- Bank Account
- Scenario
- Book Code
- Statistics Code
- Budget Reference
- Subledger
- Business Unit Affiliate
- Supplier
- Supplier Remit Supplier
- Transaction Date
- Unit

### Advanced Cost Accounting Mart

The Advanced Cost Accounting Mart provides access to cost drivers by customer, product, or geographic region. Use the Advanced Cost Accounting Mart with JD Edwards EnterpriseOne transaction systems to analyze customer buying patterns and profitability, as well as evaluate the impact of cost drivers to product contribution. The pre-integrated facts and dimensions for Advanced Cost Accounting are:

#### Facts

- Cost Analyzer
- Driver Balance

#### Dimensions

- Account
- Activity
- Business Unit
- Currency Attributes
- Customer
- Detail Period
- Document Details
- Driver
- Item
- Ledger
- Subledger
- View

### Real Estate Mart

The Real Estate Mart allows you to monitor the operating expenses and operations of your real estate portfolio and understand rental rates by property. Use the Real Estate Mart with JD Edwards EnterpriseOne transaction systems to optimize occupancy costs, space usage, and rental rates. The pre-integrated facts and dimensions for Real Estate are:

#### Facts

- Average Rental Rate by Building
- Budget Rent v/s Actual Rent by Building
- Expense Billing
- General Ledger Journal Entries
- Lease
- Real Estate Area
- Real Estate Billing
- Rent
- Tenant Sales History

#### Dimensions

- Account
- Address Book Master
- Alternate Account
- Area Type
- Available Date
- Book Code
- Chartfield2
- Budget Reference
- Business Type
- Business Unit
- Business Unit Affiliate
- Business Unit Composite
- Chartfield1
- Lease Version Effective Date

- Chartfield3
- Class Field
- Currency Attributes
- Department
- Detail Period
- Document Details
- Effective Begin Date
- Effective end Date
- Expense Participation Class
- Fund
- Fund Affiliate
- GL Adjustment Type
- GL Date
- GL Offset
- Invoice Date
- Journal Currency Attributes
- Journal Document Details
- Journal Source
- Lease Effective Date
- Lease End Date
- Lease Type
- Lease Version End Date
- Ledger
- Month
- Move In Date
- Move Out Date
- Operating Unit
- Operating Unit Affiliate
- Pattern Day
- Pattern Day Journal Date
- Person
- Product
- Program Fdm
- Project
- Rent Type
- Scenario
- Statistics Code
- Sublease Date
- Subledger
- Suspend Date
- Tenant
- Unit

### **Enterprise Service Automation (ESA) Mart**

The ESA Mart calculates standard metrics that service organizations need to maintain tight control over services costs. Use the ESA functional area to analyze performance, contract profitability, resource utilization, and time and expense compliance in order to keep projects on time and on budget. Or use the ESA Mart to assess contract profitability to ensure that you have the best vendors for your services. The pre-integrated facts and dimensions for ESA are:

#### **Facts**

- Contract Amendments
- Contract Distributions
- Contract Forecast Current
- Contract Forecast Periodic
- Current Projects
- Contract Renewals
- Contract Revenue Recognition
- Contract Transactions
- Project Issues

- Employee Forecast
- Expense Distributions
- Expense Report Approvals
- Periodic Projects
- Project Changes
- Project Current Activities
- Project Deliverables
- Project Periodic Activities
- Project Transactions
- Proposals
- Resource Assignments
- Resource Rates
- Resource Time Reports
- Service Orders

### Dimensions

- Account
- Accounting Date
- Approval Date
- Assignment
- Assignment Status
- Audit Date
- Billing Action
- Business Unit General Ledger
- Business Unit Project
- Chartfield1
- Chartfield2
- Chartfield3
- Class Field
- Contract
- Contract Amendment Reason
- Contract Amendment Type
- Contract Amendment Date
- Contract Detail
- Contract End Date
- Contract Last Run Date
- Contract Line End Date
- Contract Line Start Date
- Contract Miscellaneous
- Contract Record Date
- Contract Sign Date
- Person Assigned
- Contract Start Date
- Create Date
- Currency Attributes
- Customer
- Day
- Department
- Document Details
- Due Date
- Effective Begin Date
- Employee Forecast
- Employee Forecast Approval
- End Date
- Expense Line
- Expense Report
- Expense Report Approval
- Expense Report Distribution Account
- Fund
- Job Code
- Late Start Date
- Location
- Merchant
- Operating Unit
- Order Capture
- Person
- Relate Project Analysis Type

- Person Employee
  - Person Responsible
  - Product
  - Project
  - Project Activity
  - Project Activity Status
  - Project Actual Start Date
  - Project Actual End Date
  - Project Analysis Type
  - Project Change
  - Project Current Start Date
  - Project Current End Date
  - Project Health
  - Project Issue
  - Project Resource Project Role
  - Project Schedule Start Date
  - Project Schedule End Date
  - Project Status
  - Project Transaction Status
  - Proposal
  - Proposal Detail
- Group
  - Report Date
  - Report Transaction Date
  - Service Order
  - Service Order Date
  - Service Order Status
  - Snapshot Date
  - Start Date
  - Task Type
  - Time
  - Time Reporting Code
  - Transaction Date
  - Unit of Measure
  - Unit of Measure Actual
  - Unit of Measure Employee
  - Unit of Measure Job Code
  - Unit of Measure Project Role
  - User
  - User Approver
  - User Auditor

### **Extensibility & Scalability**

Oracle Business Intelligence Enterprise Edition (OBIEE) offers an integrated, comprehensive suite of open, standards-based business intelligence products and provides the best foundation for building enterprise-wide BI solutions. Utilizing the sophisticated business calculation and analytic engine within the Oracle BI Server, OBIEE provides a scalable and robust analytical platform that can handle both very large data sets and diverse user communities with unparalleled speed, power and extensibility. OBIEE delivers powerful, easy-to-use analytic reporting and intelligence across any data source or IT infrastructure investments you may already have.

### **Leverage Your Investment in PeopleSoft**

Oracle is committed to continuously improving current customer investments, while simultaneously delivering innovative, next-generation solutions. Fusion Financials Intelligence for PeopleSoft Enterprise delivers on this commitment by integrating PeopleSoft Enterprise Performance Management with Oracle's market-leading BI platform, Oracle Business Intelligence Enterprise Edition. With Fusion Financials Intelligence for PeopleSoft Enterprise, you can drive more value out of your existing PeopleSoft investment while taking your first steps toward Oracle Fusion Applications.

### **About PeopleSoft Enterprise Performance Management**

Oracle's PeopleSoft Enterprise Performance Management (EPM) suite belongs to Oracle's comprehensive, market-leading set of analytic and business intelligence applications. Only Oracle delivers the full spectrum of analytic applications with capabilities such as corporate performance management, interactive dashboarding, and embedded analytic functionality for delivering insight pervasively across your enterprise. Open, pre-built, industry-specific business intelligence applications provide actionable intelligence for each business function and user role.

Copyright 2007 Oracle. All Rights Reserved.

This document is provided for information purposes only, and the contents hereof are subject to change without notice. This document is not warranted to be error-free, nor is it subject to any other warranties or conditions, whether expressed orally or implied in law, including implied warranties and conditions of merchantability or fitness for a particular purpose. We specifically disclaim any liability with respect to this document, and no contractual obligations are formed either directly or indirectly by this document. This document may not be reproduced or transmitted in any form or by any means, electronic or mechanical, for any purpose, without our prior written permission.

Oracle, JD Edwards, and PeopleSoft, Siebel are registered trademarks of Oracle Corporation and/or its affiliates. Other names may be trademarks of their respective owners.