

# JD EDWARDS ENTERPRISEONE PORTAL SOLUTIONS



## PRODUCT HIGHLIGHTS

- Two portal options:
  - Oracle Application Server Portal
  - JD Edwards EnterpriseOne Collaborative Portal
- Integrated portlet development tools
- Standards-based with
  - WSRP
  - JSR-168
- Security includes:
  - LDAP
  - Single Sign On
  - JD Edwards application security

*Your business needs a portal to provide a single and secure point of access for all of your interactive users. These portals must aggregate disparate content in order to present the right information to the right people. With JD Edwards EnterpriseOne Portal Solutions you provide a framework for building, deploying, and managing your portal content. Out-of-the-box, JD Edwards EnterpriseOne provides pre-built portlets for common business processes. If these pre-built portlets do not match your exact functional needs then use integrated development tools within the JD Edwards EnterpriseOne toolset to create your own portlets. Either way, you get portal interoperability standards such as JSR-168 and WSRP for easy configuration and deployment. Plus, use a combination of security options such as Single Sign-On, LDAP, and native JD Edwards' application security.*

### **The Issue: The Need for More than One Enterprise-Wide Application**

Gone are the days where organizations utilize a single enterprise wide application software package for all their business processes. In today's environment, many companies utilize multiple best of breed products to extend the functionality of their core ERP packages. In this type of environment, not only is the integration of enterprise data necessary—but also the integration of the user interface. End users need the capability to access and organize application content from multiple sources within a single customizable user interface

### **The Solution: Multiple Applications. One Portal for Your Entire Enterprise**

Oracle's JD Edwards EnterpriseOne provides a comprehensive portal solution that allows our customers to aggregate and secure application content within a centralized user interface. To support this, JD Edwards EnterpriseOne distributes and supports two industry leading portal servers—the Oracle Application Server Portal and the JD Edwards EnterpriseOne Collaborative Portal. JD Edwards EnterpriseOne also provides a catalogue of pre-built portlets for common business processes along with the integrated development tools which allow you to create your own portlets.

### **Oracle Application Server Portal**

The Oracle Portal offers a complete and integrated framework for building, deploying, and managing enterprise portals on Oracle Application Server. The Oracle Portal delivers a unified and secure point of access to all enterprise information and services to improve business visibility and collaboration, reduce integration costs, and ensure investment protection.



Figure 1 – JD Edwards EnterpriseOne Customer Self Service Portlets

### JD Edwards EnterpriseOne Collaborative Portal

Based on IBM's WebSphere Portal, the JD Edwards Collaborative Portal gives your employees, suppliers, business partners, and customers a single point of access to the information they need, when they need it.

### Pre-built JD Edwards EnterpriseOne Portlet Content

JD Edwards EnterpriseOne provides a catalogue of pre-built portlets that support common business processes - such as:

- **Customer Relationship Management** – Portlets that support Customer Self Service, Account and Shipment processes.
- **Supplier Relationship Management** – Portlets that support Supplier Self Service, Supplier Performance and Sourcing processes.
- **Human Resources Management** – Portlets that support Employee and Manager Self Service, Benefits, Recruiting, Payroll and Time Entry processes.

These portlets are included as part of the base JD Edwards EnterpriseOne applications or can be downloaded from JD Edwards in the form of Electronic Software Updates (ESUs). The portlets can be deployed to either the Oracle Portal Server or the Collaborative Portal Server.

### Integrated Portlet Development Tools:

JD Edwards EnterpriseOne Portlets are built on the foundation of the JD Edwards EnterpriseOne Tools architecture. The JD Edwards EnterpriseOne Forms Design Aid (FDA) is an integrated tool that is responsible for all JD Edwards EnterpriseOne user interfaces – including our HTML and portlet applications. This enables you to leverage your existing skills if the need arises to extend the portlet application to your specific

needs.

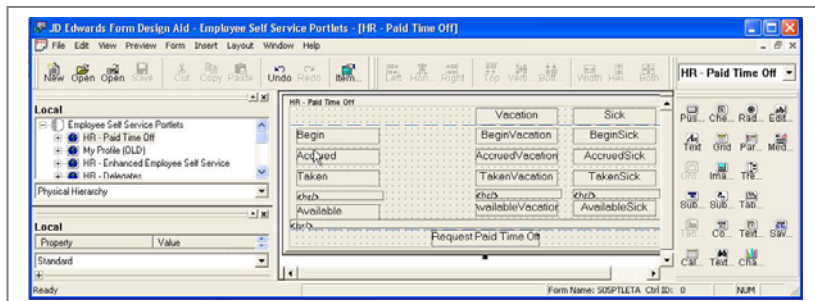


Figure 2 – Forms Design Aid (FDA) development tool for JD Edwards EnterpriseOne Portlets.

### Standards Based Portal Technology Includes WSRP for Publishing

JD Edwards EnterpriseOne has long leveraged portal interoperability standards such as JSR-168 and JPDK. Tools 8.98 continued this standards-based approach with added support for publishing JD Edwards EnterpriseOne portlet content utilizing the WSRP (Web Services for Remote Portlets) standard. The adoption of the WSRP standard provides a modernized framework for content to be easily configured and deployed within the portal and thus allows you greater flexibility within your portal architecture.

### Feature/Function Highlights

- Two portal options
- Oracle Portal Server
- Collaborative Portal
- Integrated portlet development tools
- Pre-built JD Edwards EnterpriseOne portlets available
- Standards-based technology
- JSR-168
- WSRP
- Security
- LDAP
- Single Sign On
- JDE E1 Application Security

Copyright 2008 Oracle. All Rights Reserved.

This document is provided for information purposes only, and the contents hereof are subject to change without notice. This document is not warranted to be error-free, nor is it subject to any other warranties or conditions, whether expressed orally or implied in law, including implied warranties and conditions of merchantability or fitness for a particular purpose. We specifically disclaim any liability with respect to this document, and no contractual obligations are formed either directly or indirectly by this document. This document may not be reproduced or transmitted in any form or by any means, electronic or mechanical, for any purpose, without our prior written permission.

Oracle, JD Edwards, and PeopleSoft are registered trademarks of Oracle Corporation and/or its affiliates. Other names may be trademarks of their respective owners. (Revised November 25, 2008 REL)