

JD EDWARDS WORLD INVENTORY MANAGEMENT



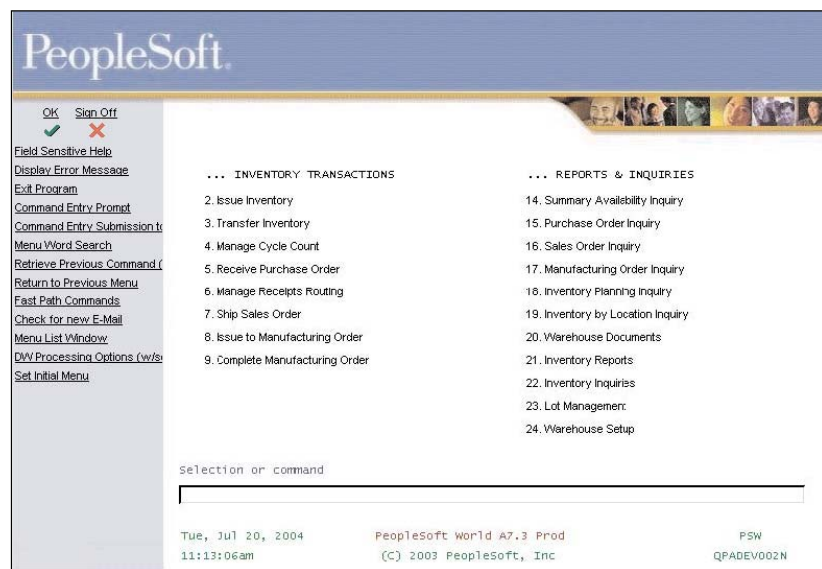
Integrate inventory information for end-to-end visibility.

Easily support unique requirements by location and customer.

Quickly adapt inventory management to business needs.

The Issue: Accurately Tracking a Moving Target

Time-based competition is shifting emphasis from managing on-site physical inventory to managing information about inventory anywhere in the supply chain. If your inventory includes only a few items that come in a single unit of measure, it's fairly simple to maintain end-to-end visibility. But where hundreds and thousands of items are managed in all kinds of pack sizes over multiple facilities, the task is much more complicated. Some items may be lot-controlled, serialized, or managed in a number of different container sizes. Others may have different replenishment strategies or require special handling or inspection processes.



Inventory Management Menu

Having all functions listed on one screen makes managing inventory easier for the warehouse staff.

Adding to the confusion are disparate systems, outsourced operations, and increasingly complex supply chains in which inventory details are often dispersed across several channels. Having a comprehensive, integrated inventory management system, with the flexibility to support unique capabilities by facility or location, is essential for efficient management of inventory anywhere in the supply network.

The Solution: End-to-End Visibility of Inventory

Oracle's JD Edwards World Inventory Management allows for pinpoint accuracy of product quantities and locations and instant access to item availability information—both within the facility and throughout the enterprise. You also gain the ability to administer consignment sites and vendor-managed inventories from a single database. We offer complete tracking of inventory from the time you receive items from

the vendor to the instant you ship the goods to your customer. By extending beyond the immediate supply chain, you can also track shipped items for the purposes of returns and warranties.

Superior Flexibility to Match Your Inventory System to Your Business Requirements

Multiple item numbers and extensive item cross-referencing capabilities to customer and vendor part numbers speed access to the inventory information you need. You can assign grades/potencies to material lot numbers and trace lots to a final product and customer or back to a purchase order to identify production runs with a customer or supplier.

You select the method for calculating material on hand based on your manufacturing or distribution environment. You have the option to consume work-in-process material by using manual issues, by backflushing (at completion or at pay points), by preflushing, or as floor stock. Based on the parameters you define, all issue methods will provide real-time availability updates.

Inventory Management offers inventory visibility in the form of storage expenses, excess quantities, and lost sales. It enables individualized item definitions with free-form item descriptions, replenishment methods, and special handling instructions. Multiple units of measure provide the ability to purchase, stock, ship, and price according to your unique needs. You can use complex pricing and costing matrices, user-defined product availability calculations, and full traceability of lot-controlled and serialized items.

The enhanced lot control features provide visibility into key milestones of a product's life cycle at the lot level. For example, you can view the date the lot was received into inventory, the dates that key ingredients were mixed together, the required retesting dates, and the lot expiration date. This visibility allows warehouse personnel to take appropriate action to ensure against product waste and maximize usage.

Added Value Through Integration

Integration with Oracle's JD Edwards World Sales Order Management, Requirements Planning, Procurement Management, and Manufacturing Management enables real-time balancing of supply and demand. You can view all demand factors, including sales orders, transfers, work orders, and forecasts, as well as all sources of supply, including purchase orders, work order completions, issues, and adjustments. In addition, Inventory Management provides critical, up-to-the-minute item status information to Oracle's JD Edwards World Advanced Planning. This information provides the basis for linking the strategic, tactical, and operational levels of the supply chain—from sourcing through manufacturing and distribution.

Through integration, you can analyze time-phased inventory displays from both supply and demand points of view. Cross-docking allows you to designate inbound quantities, either from a vendor or from the shop floor, to fulfill specific customer demand. With Oracle's JD Edwards World Warehouse Management, instead of

putting those items away on the shelf, the system can direct you to move them immediately to the shipping dock—reducing labor and storage costs and increasing fulfillment rates.

A Strategic Partner for Your Long-Term Needs

A solution is only as good as the company that stands behind it. That's why we are committed to innovation, superior value, and customer satisfaction. Our singular goal is to help make you stronger, enabling you to solve your most important business challenges. To make you stronger, we dedicate ourselves to continually enhancing the value of our solutions, not only with software research and development, but also with superior consulting, education, and training support. As your long-term business partner, we will work with you to help ensure that our solutions grow and change with your business—making your technology investment an asset that increases in value over time.

Feature/Function Highlights

- User-defined location format
- Variable product types:
 - Bulk and liquid
 - Raw material and components
 - Finished and packaged goods
- Grade and potency management
- Multiple facilities and locations
- Multiple units of measure processing
- Issues, adjustments, transfers
- Cycle count
- Tag count
- Kits and components
- Lot control
- Cross docking
- Extensive item costing options
- Detailed transaction ledger
- Container management
- Item cross-reference capability
- Comprehensive pricing information:
 - Date range, percentage, or amount
 - Future cost conversion

- ABC analysis
- User-defined availability
- Advanced commitment logic
- Customer/vendor cross referencing
- Multiple item numbers
- EDI/electronic commerce
- UCC 128 compliant
- Speed location maintenance
- Global updates
- Supply and demand analysis
- Landed cost

Solution Integration

- Supply Chain Management:
- Advanced Planning
- Customer Order Management
- Manufacturing
- Logistics
- Supply Chain Analytics
- Supplier Relationship Management

Copyright 2004, 2005 Oracle. All Rights Reserved.

This document is provided for information purposes only, and the contents hereof are subject to change without notice. This document is not warranted to be error-free, nor is it subject to any other warranties or conditions, whether expressed orally or implied in law, including implied warranties and conditions of merchantability or fitness for a particular purpose. We specifically disclaim any liability with respect to this document, and no contractual obligations are formed either directly or indirectly by this document. This document may not be reproduced or transmitted in any form or by any means, electronic or mechanical, for any purpose, without our prior written permission.

Oracle, JD Edwards, and PeopleSoft are registered trademarks of Oracle Corporation and/or its affiliates. Other names may be trademarks of their respective owners.