

AUTOVUE 2D PROFESSIONAL

KEY FEATURES AND BENEFITS

KEY FEATURES

- Views hundreds of document types
- Navigates complex CAD documents easily
- Adds markups and comments
- Performs precise 2-D measurements
- Compares 2-D designs
- Searches text for keywords
- Delivers advanced printing capabilities
- Converts designs to image, PDF, or other neutral formats

KEY BENEFITS

- Extend the reach of technical documents to all enterprise users
- Expedite design reviews and eliminate paper
- Put projects on the fast track with improved communication and multiparty real-time collaboration
- Access documents easily with native document viewing
- Collaborate without risking intellectual property

"AutoVue [2D Professional] delivers seamless collaboration among our project teams all over the world. Engineers, architects, contractors, and regulators use AutoVue [2D Professional] to efficiently access, review, and comment on documents and deliver feedback on the fiscal, technical, engineering, environmental, and regulatory issues inherent in each project."

—Lars Fuglsang,
Senior Project Manager,
The Ramboll Group

Oracle's AutoVue 2D Professional provides extended teams with instant access to critical project information contained in 2-D computer-aided design (CAD) and Microsoft Office documents. Its native document viewing, markup, and real-time collaboration capabilities deliver the foundation for an efficient collaboration process. Users can easily and digitally communicate and track feedback using a single solution, accelerating design reviews and reducing costly errors caused by misinterpretations. Communication and collaborative workflows are streamlined throughout the project lifecycle, so you can complete projects faster and within budget.

Extend the Reach of Technical Documents to All Enterprise Users

AutoVue 2D Professional makes technical information, including 2D CAD, Graphic, Office and PDF documents, available to all enterprise users, regardless of their technical skills and without requiring costly authoring applications. Team members are connected sooner in the product development cycle, and can make sound business decisions faster based on reliable information.

Expedite Design Reviews and Eliminate Paper

Global team members can use AutoVue 2D Professional to digitally view, review, verify and provide feedback on designs changes and development progress. Design review and troubleshooting processes can be standardized on a single solution, improving communication across the enterprise, and avoiding organizational and technology issues that hinder collaboration and impact negatively on costs, schedules, and product quality. With the elimination of paper during design reviews, AutoVue 2D Professional also helps reduce printing and handling expenses, travel costs, and time out of the office.

Put Projects on the Fast Track with Improved Global Collaboration

The real-time collaboration capabilities of AutoVue 2D Professional, Web version help organizations to connect everyone in the global enterprise, allowing co-workers and partners to communicate as if they were in the same room, even if they are located on the other side of the world. Users can simultaneously review and mark up documents, exchange ideas, assign action items, and resolve design issues in real time, putting projects on the fast track.

Collaborate without Risking Intellectual Property

The Web version of AutoVue 2D Professional allows users to securely collaborate with extended teams and outsourced partners on sensitive documents without risking

EXTEND THE REACH OF INFORMATION WITHIN AND OUTSIDE YOUR ORGANIZATION

ORACLE'S AUTOVUE MOBILE

AutoVue Mobile enables global organizations extend the reach of technical information and business processes to disconnected users within and outside an organization. Through the sharing of Mobile Packs, AutoVue Mobile significantly improves how teams interact with information and one another, increasing visibility of key technical data, and providing insight into the context surrounding the documents. Teams can collaborate more effectively and securely with global supply chain partners, allowing them to meet the rigorous demands of product development and achieve competitive advantage.

a company's valuable intellectual property (IP). AutoVue Web version's unique streaming technology provides access to the full intelligence of documents without transferring the original files to the client desktop; originals never leave the server, and no local temps or cache files of any kind are created in the process, ensuring that a company's IP remains under the total control of its owner.

Key Features and Capabilities

View hundreds of document types.. AutoVue delivers native document viewing capabilities for hundreds of document types, providing users with easy access to reliable and accurate information contained in 2D CAD drawings and graphic, Office or PDF documents—all without the authoring software and without undergoing costly and error-prone document conversions.

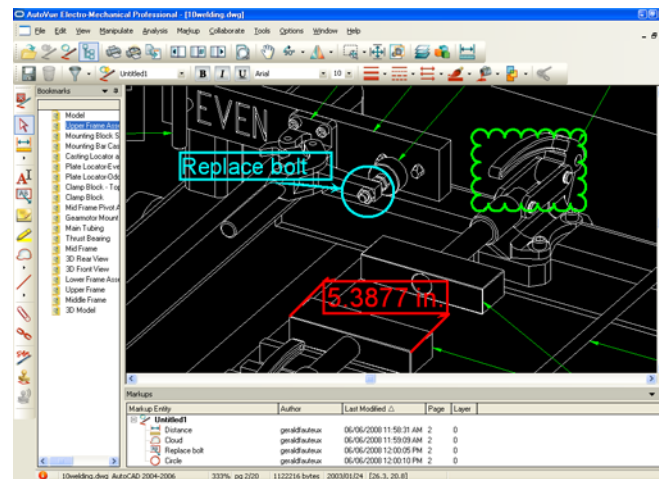


Figure 1: View and mark up 2D CAD files.

Add markups and track reviews & comments. Add markups, as well as sound, video and graphic attachments to your documents. Easily manage and track feedback, change requests, and comments across multiple reviewers.

Enable digital sign-off – Quickly approve markups and comments with digital sign-off. The sign-off stamp contains information about the markup author, date and time of creation, providing a reliable trail of changes and approvals. Reviewers can also use AutoVue's IntelliStamp to electronically sign and stamp document sets with attributes from the back-office system. With IntelliStamp, users can trigger workflow actions directly from within documents reviewed in AutoVue, allowing for workflow automation and improved business processes.

Convert documents to TIFF or PDF - For organizations that need to comply with industry or corporate standards, AutoVue provides the ability to generate TIFF or PDF renditions of your documents.

2D CAD Features and Capabilities

Navigate complex CAD documents easily. Locate the desired area on a drawing quickly using three levels of zoom that are available—bird's eye, magnifying window, and magnifying glass.

INTEGRATE WITH ENTERPRISE APPLICATIONS

ORACLE'S AUTOVUE ENTERPRISE VISUALIZATION PRODUCTS

The Web version of AutoVue products can be integrated into existing content management, product lifecycle management, or enterprise resource planning systems, as well as file servers or home-grown solutions. Integrated with existing enterprise systems, AutoVue connects information, people and processes, delivering anytime, anywhere access to vital information and maximizing business process efficiency.

Teams can better collaborate and make sound business decisions, driving innovation and operational efficiency.

RELATED PRODUCTS

- AutoVue 3D Professional Advanced
- AutoVue EDA Professional
- AutoVue Electro-Mechanical Professional
- AutoVue Office
- AutoVue Mobile
- AutoVue VueLink Integration

Perform precise 2-D measurements. Speed up design reviews by performing precise measurements including distance, areas, angles, arcs, and more.

Compare 2-D designs. Instantly determine what has been added, removed, or changed in your designs by comparing 2-D drawings.

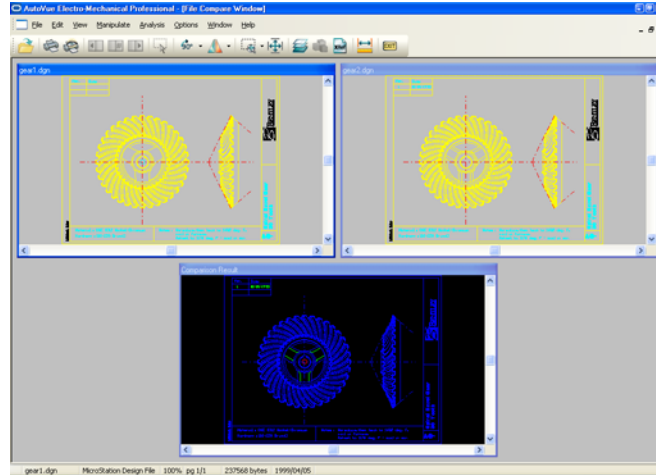


Figure 2: Compare two versions of a CAD drawing.

Search text. Search text for keywords to quickly find desired information.

Used advanced printing. Save time by automating the printing process—batch print files, customize print settings, and save printing configurations.

Contact Us

For more information about Oracle's AutoVue 2D Professional, please visit oracle.com/applications/autovue, call +1.800.363.5805 or +1.514.905.8400 to speak to an Oracle representative, or email autovuesales_ww@oracle.com.

Copyright © 2008, Oracle and/or its affiliates. All rights reserved.

This document is provided for information purposes only, and the contents hereof are subject to change without notice. This document is not warranted to be error-free, nor is it subject to any other warranties or conditions, whether expressed orally or implied in law, including implied warranties and conditions of merchantability or fitness for a particular purpose. We specifically disclaim any liability with respect to this document, and no contractual obligations are formed either directly or indirectly by this document. This document may not be reproduced or transmitted in any form or by any means, electronic or mechanical, for any purpose, without our prior written permission.

Oracle is a registered trademark of Oracle Corporation and/or its affiliates. Other names may be trademarks of their respective owners.