

PROBUSINESS® VALIDATED INTERFACE TO PEOPLESOFT ENTERPRISE PAYROLL FOR NORTH AMERICA

ProBusiness®

A PeopleSoft Enterprise 8 validated software integration. Offers ease of operating within familiar PeopleSoft Enterprise environment. Includes payroll tax expertise and exceptional service.

ProBusiness Services, Inc. provides HR business process outsourcing (BPO) services that streamline processes, reduce administrative costs, and improve service levels for large employers nationwide. ProBusiness offers outsourced services for payroll tax, payroll, benefits administration, human resources, web self-service, and comprehensive outsourcing.

Integration Overview

In a complex enterprise with multiple locations, there can be hundreds of filings and millions of dollars in deposits to oversee, requiring a significant investment of time and resources as well as additional risks if a mistake leads to a penalty. That's why your payroll tax liability should be handled with the professional attention and expert care of ProBusiness.

ProBusiness® Validated Interface to Oracle's PeopleSoft Enterprise Payroll for North America connects you with ProBusiness® outsourced payroll tax service so you can:

- Integrate seamlessly with all PeopleSoft Enterprise application versions.
- Extract tax information using convenient PeopleSoft Enterprise pull-down menus.
- Streamline periodic, quarterly, and W-2 filing.
- Leverage the skills of experienced ProBusiness specialists.
- Deploy turnkey data integration solutions to minimize time and expense.
- Choose from a variety of standard configuration levels.
- Guarantee predictability with fixed-fee interface pricing.
- Eliminate the need for expensive third party contractors.
- Allow in-house IT resources to focus on core business functions.

We leverage our systems-specific experience to benefit you. ProBusiness interface specialists have performed over 80 PeopleSoft Enterprise installations and have tailored ProBusiness solutions to meet a broad variety of tax filing needs. Our technical experts build on our validated interface and configure solutions with maximum efficiency, as you benefit from the predictability of ProBusiness' standard

INTEGRATED WITH

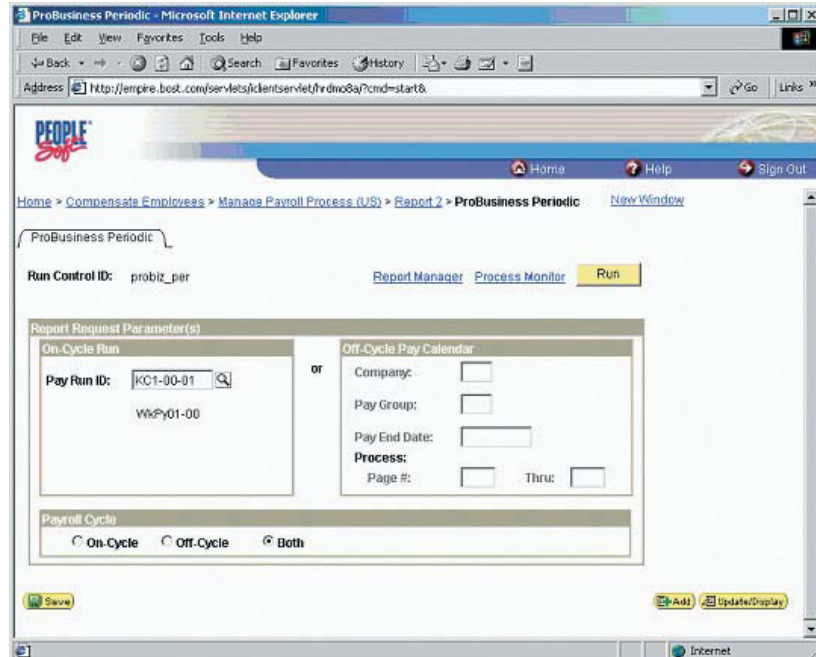


PEOPLESOFT ENTERPRISE

Through the Oracle PartnerNetwork Applications Integration Initiative, partners with validated integrations are able to provide customers with standards based vanilla product integrations, tested and validated by Oracle. Customers benefit from improved risk management and smoother upgrade capability, leading to a lower total cost of ownership and greater overall satisfaction.

**ProBusiness Interface to
PeopleSoft Enterprise Payroll
for North America**

Combines the ease of operating within your familiar PeopleSoft Enterprise system with the exceptional personalized service and tax expertise of ProBusiness Services, Inc.



fixed-fee pricing. You can choose from a variety of set configuration levels or have ProBusiness' experts design a solution to meet unique business needs.

Once configured, your staff can run tax extracts within the comfort of their familiar PeopleSoft Enterprise application environment. ProBusiness tax extracts typically appear as standard system report menu items in a sub-menu of Oracle's PeopleSoft Enterprise Process Scheduler so payroll staff can extract data using convenient pull-down menus. Tax data can also be transmitted outside Scheduler, as needed. Periodic, quarterly and optional W-2 programs can be executed outside of the Scheduler in batch mode, as required. And, periodic liabilities can be extracted interactively, via RUN-ID, or automatically, via a daily-automated job.

ProBusiness® tax transporter middleware accurately translates tax codes during interface, to ensure data integrity and eliminate error-prone manual translation, as our experts maintain compliance changes and tax code translations at ProBusiness. Accessing our web-based TaxCenter, you enhance your visibility and control of payroll tax data to facilitate strategic decision-making.

When you transmit your payroll tax data to ProBusiness via our certified interface, you can be certain that your payroll tax is handled correctly. An assigned account manager backed by a skilled support team with functional and regulatory expertise manages your account. We coordinate deposits, returns, compliance, and transactions for clients in all U.S. States and territories. Our payroll tax experts can respond to agency inquiries, and provide reliable audit support.

By outsourcing payroll tax activities and interface support to ProBusiness, you can now allocate resources more strategically to focus on core competencies while minimizing exposure to costly mistakes and penalties.

Availability and Support

ProBusiness Interface to PeopleSoft Enterprise Payroll for North America Validated Software Integration and Support is available from ProBusiness Services, Inc. For more information, please call 1 800 776 7970 or visit www.probusiness.com.

Validation Environment

Operating System: Sun Sparc Solaris 8.0

Database: Oracle 8.1.7.4

PeopleSoft Enterprise Application: PeopleSoft Enterprise HCM 8.3/
PeopleTools 8.18

Partner Application: Tax & W-2 Extract for PeopleSoft Enterprise Payroll 8.3

For additional information about partnering with Oracle, please contact us at opninfo_us@oracle.com or visit us at www.partners.oracle.com.



ProBusiness Services, Inc.
4125 Hopyard Road
Pleasanton, California 94588 USA
NASDAQ symbol PRBZ
Toll-free: 1 800 776 7970
www.probusiness.com

Copyright 2003, 2005 Oracle. All Rights Reserved. Published in the U.S.A.

This document is provided for information purposes only, and the contents hereof are subject to change without notice. This document is not warranted to be error-free, nor is it subject to any other warranties or conditions, whether expressed orally or implied in law, including implied warranties and conditions of merchantability or fitness for a particular purpose. We specifically disclaim any liability with respect to this document, and no contractual obligations are formed either directly or indirectly by this document. This document may not be reproduced or transmitted in any form or by any means, electronic or mechanical, for any purpose, without our prior written permission.

Oracle, JD Edwards, and PeopleSoft are registered trademarks of Oracle Corporation and/or its affiliates. Other names may be trademarks of their respective owners.