

# BMC SOFTWARE CONTROL-SA/ AGENT FOR PEOPLESOFT ENTERPRISE



PeopleSoft Enterprise 8 validated software integration. Centralize enterprise-wide identity management. Enhance efficiency, security, and consistency.

*BMC Software is a leading provider of enterprise management solutions. The company focuses on Assuring Business Availability® for its customers by helping them proactively improve service, reduce costs, and increase value to their business. BMC Software solutions span enterprise systems, applications, and databases.*

## Integration Overview

CONTROL-SA integrates with Oracle's PeopleSoft Enterprise applications via CONTROL-SA/Agent for PeopleSoft Enterprise, which coordinates the communication between CONTROL-SA and PeopleSoft Enterprise applications. This integration enables organizations to centrally manage access to the PeopleSoft Enterprise environment along with access to numerous other security systems. It leads to the following benefits:

- Maximized effectiveness and consistency of security administration.
- Maintenance of an updated, enterprise-wide security view.
- Reduced help desk efforts and enhanced security.
- Enforced identity management efficiency and policy.

## Integration Methodology and Technology

CONTROL-SA provides full control over internal and external user access, serving as the foundation for your security and identity management initiative. Enterprise-wide access can be granted, updated, and revoked in minutes rather than days from a single point of management. CONTROL-SA consolidates administration and auditing and strictly enforces security policies. Its flexibility and robust functionality make it fit for any business environment.

CONTROL-SA/Agent for PeopleSoft Enterprise integrates with PeopleSoft Enterprise applications by using a specialized application engine program that deploys the component interface and Meta-SQL to perform the CONTROL-SA transactions on the PeopleSoft Enterprise environment.

## Availability

CONTROL-SA/Agent for PeopleSoft Enterprise 3.1.06 is available from BMC Software.

## Products and Solutions, Canada and United States

Tel: 800 793 4262 or 713 918 1371

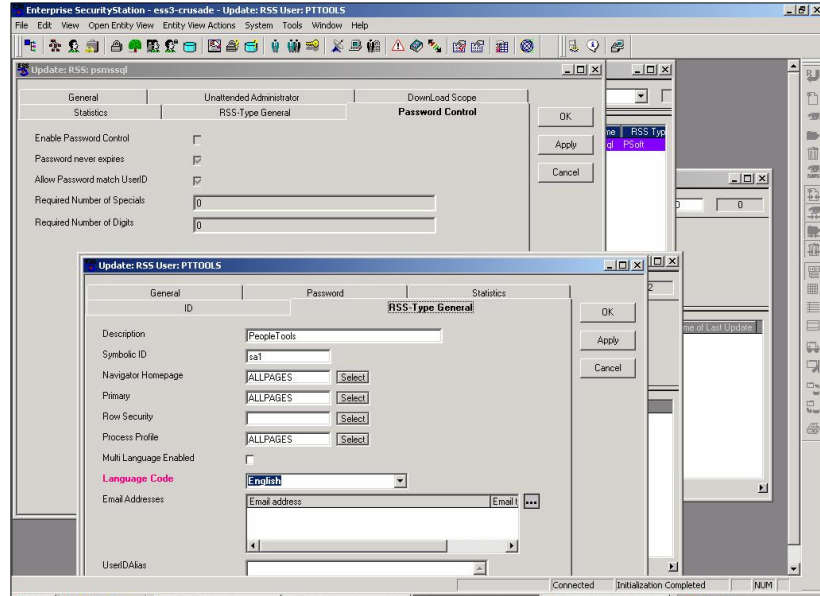
## INTEGRATED WITH



## PEOPLESOFT ENTERPRISE

Through the Oracle PartnerNetwork Applications Integration Initiative, partners with validated integrations are able to provide customers with standards based vanilla product integrations, tested and validated by Oracle. Customers benefit from improved risk management and smoother upgrade capability, leading to a lower total cost of ownership and greater overall satisfaction.

## Enterprise Security Station



Fax: 713 918 8000

[www.bmc.com/webforms/webforms.cfm?template=9](http://www.bmc.com/webforms/webforms.cfm?template=9)

### Support

CONTROL-SA/Agent for PeopleSoft is fully supported by BMC Software.

#### Support Contacts, Canada and United States

Tel: 800 537 1813 or 713 918 2950

Fax: 713 918 1179

Email: [support@bmc.com](mailto:support@bmc.com)

### Validation Environment

**Software:** PeopleSoft CRM 8.41, PeopleTools 8.41, CONTROL-SA/Agent for PeopleSoft 3.1.06

**Database Platform:** Oracle 9i, MS SQL 2000

**Operating System:** Solaris 8, Windows 2000

For additional information about partnering with Oracle, please contact us at [opninfo\\_us@oracle.com](mailto:opninfo_us@oracle.com) or visit us at [www.partners.oracle.com](http://www.partners.oracle.com).



**BMC Software, Inc.**  
2101 City West Blvd  
Houston, Texas 77042 USA  
Tel 800 841 2031  
<http://www.bmc.com>

Copyright 2004, 2005 Oracle. All Rights Reserved. Published in the U.S.A.

This document is provided for information purposes only, and the contents hereof are subject to change without notice. This document is not warranted to be error-free, nor is it subject to any other warranties or conditions, whether expressed orally or implied in law, including implied warranties and conditions of merchantability or fitness for a particular purpose. We specifically disclaim any liability with respect to this document, and no contractual obligations are formed either directly or indirectly by this document. This document may not be reproduced or transmitted in any form or by any means, electronic or mechanical, for any purpose, without our prior written permission.

Oracle, JD Edwards, and PeopleSoft are registered trademarks of Oracle Corporation and/or its affiliates. Other names may be trademarks of their respective owners.