

# PRINCETON SOFTECH OPTIM SOLUTION INTEGRATION WITH PEOPLESOFT ENTERPRISE



111 Campus Drive  
Princeton, NJ 08540-6400  
Toll-Free: +1.800.457.7060  
Phone: +1.609.627.5500  
Fax: +1.609.627.7799  
[www.princetonsoftech.com](http://www.princetonsoftech.com)



*Enterprise Data Management Delivers Business Value*

*Integrated Archiving Supports PeopleSoft HCM 8.8 Modules*

## Company Overview

As the industry leader in enterprise data management, Princeton Softech provides solutions that align the management of enterprise application data with business objectives to improve service levels, mitigate risk, and control costs. Optim solutions scale across leading applications, databases, operating systems, and hardware platforms. More than 2,400 companies worldwide—including nearly half of the Fortune 500—rely on Princeton Softech’s solutions to enhance the business value of their enterprise applications and databases.

## Integration Overview

The Optim PeopleSoft Enterprise solution delivers measurable benefits, enabling sites to improve performance, control infrastructure costs, and streamline application upgrades by archiving historical Oracle’s PeopleSoft Human Capital Management (HCM) transactions. Using PeopleSoft pages, sites specify archive criteria, such as pay date or transaction status. Optim applies PeopleSoft-specific functional condition checks, ensuring that each archived transaction record represents a historical reference snapshot of business activity. Sites can easily access, query, and report on archived records via the familiar PeopleSoft interface.

## Integration Details

At the user interface level, the Optim PeopleSoft Enterprise solution integrates with PeopleSoft HCM through archive and restore request pages developed using PeopleCode and delivered as PeopleSoft projects. Authorized users define and initiate such requests through PeopleSoft. At the processing level, the Optim PeopleSoft Enterprise solution links each module to the archive and restore requests. Once invoked, these archive and restore requests are performed by Optim on the PeopleSoft database to populate the archive environment.

Integration is achieved through installation of the following objects that Optim provides:

- PeopleSoft objects, such as menus, components, pages, and records, uniquely developed for each module and packaged as a PeopleSoft project. Note that the PeopleSoft HCM objects are not impacted by the installation of Optim.



Through the Oracle PartnerNetwork Applications Integration Initiative, partners with validated integrations are able to provide customers with standards-based vanilla product integrations, tested and validated by Oracle. Customers benefit from improved risk management and smoother upgrade capability, leading to a lower total cost of ownership and greater overall satisfaction.

## Availability

**Princeton Softech USA**  
111 Campus Drive  
Princeton, NJ 08540-6400  
Toll-Free: +1.800.457.7060  
Phone: +1.609.627.5500  
Fax: +1.609.627.7799

**Princeton Softech UK**  
3000 Cathedral Hill  
Guildford, GU2 7YB  
Phone: +(01483) 243 649  
Fax: +(01483) 245 297

**Princeton Softech France**  
Parc GIP Paris Charles de  
Gaulle 2  
12 rue Gustave Eiffel  
BP 90186  
95691 Goussainville CEDEX  
Phone: +33.1.39.88.77.77  
Fax: +33.1.39.88.77.91

**Princeton Softech Spain**  
C/Rodriguez San Pedro 64, 6<sup>o</sup>  
C.I.  
28015 - Madrid  
Phone: +34.91.549.21.35

**Princeton Softech Italy**  
Via Senigallia 18/2 (Tower A)  
Ufficio 201  
20161 Milano  
Phone: +39.02.6467.2503  
Fax: +39.02.6467.2409

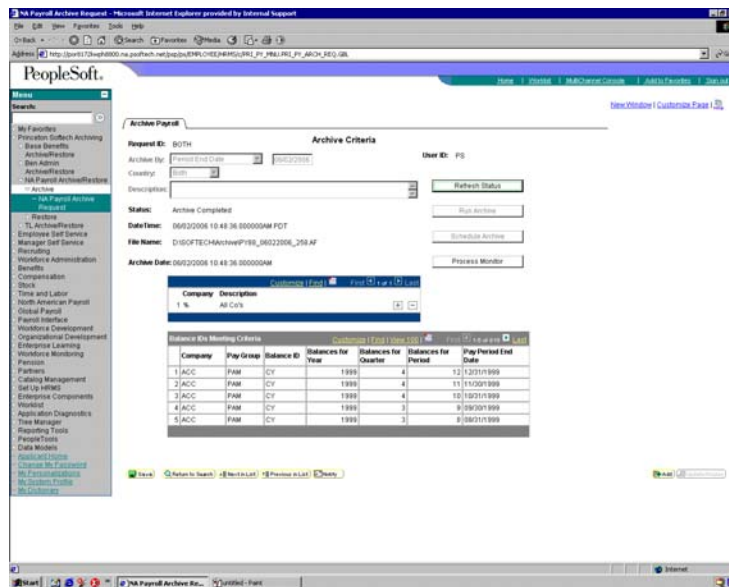
**Princeton Softech Germany**  
Prinzenpark  
Prinzenallee 7  
D-40549 Dusseldorf  
Phone: +49.2262.752705  
Fax: +49.2262.751014

**Princeton Softech Australia**  
Level 20, Tower 2 Darling Park  
201 Sussex Street  
Sydney, NSW 2000  
Phone: +61.2.9006.1275  
Fax: +61.2.9369.4244

## Support

Princeton Softech  
www.princetonsoftech.com  
111 Campus Drive  
Princeton, NJ 08540-6400  
Toll-Free: +1.800.457.7060  
Phone: +1.609.627.5500  
Fax: +1.609.627.7799

- Optim-specific objects installed using the Optim software. These objects integrate Optim with the PeopleSoft database and are needed to archive and retrieve data.



**Optim provides native access to archived and current transactions through familiar PeopleSoft pages and processes.**

Sites may leverage different data access paths at different points in the archive lifecycle. Native application access to archives provides convenience, particularly during the early years of the lifecycle. To interact with archives maintained for long-term retention in content-addressed storage environments, sites may want to leverage Optim's application-independent access capabilities.

## Environment

### Partner Environment

Optim PeopleSoft Enterprise solution v4.0  
Windows 2000 SP4

### Oracle Environment

Oracle's PeopleSoft Enterprise HCM 8.8 SP1  
Windows 2000 SP4  
PeopleTools 8.44.16  
Oracle 9i Database 9.2.0.1.0

For additional information about partnering with Oracle, please contact us at [opninfo\\_us@oracle.com](mailto:opninfo_us@oracle.com) or visit us at [www.partners.oracle.com](http://www.partners.oracle.com)

Copyright 2007, Oracle. All Rights Reserved.

This document is provided for information purposes only, and the contents hereof are subject to change without notice. This document is not warranted to be error-free, nor is it subject to any other warranties or conditions, whether expressed orally implied in law, including implied warranties and conditions of merchantability or fitness for a particular purpose. We specifically disclaim any liability with respect to this document, and no contractual obligations are formed either directly or indirectly by this document. This document may not be reproduced or transmitted in any form or by any means, electronic or mechanical, for any purpose, without our prior written permission.

Oracle is a registered trademark of Oracle Corporation and/or its affiliates. Other names may be trademarks of their respective owners.