

# ADF Desktop Integration 11g Release1 Component and Feature Demo

An Oracle JDeveloper How To Document

Written by James Amalraj, Arunkumar Ramamoorthy, Sireesha Pinninti, Gayathri Sekar and Dhiraj Shivpriya, Oracle Corporation

Created : February, 2010

Updated : March, 2013

## Introduction

ADF Desktop Integration or ADFdi is one of the new features of JDeveloper 11.1.1.1.0 and part of the ADF framework that enables desktop integration with MS Excel spreadsheets to manage large volumes of data from web applications via Excel.

ADF Desktop Integration 11g Release1 component and feature demo application is a collection showcasing the capabilities of the components and features of ADF Desktop Integration.

## Components covered

- ADF Input Text
- ADF Output Text
- ADF Label
- ADF Button
- ADF List of Values
- ADF Table
- ADF Read-only Table

## Features covered

- Form with DLOV
  - Form with Navigation Buttons and DML operations
  - Dependent List of Values
  - Worksheet Errors
  - Attribute Hints
  - Internationalization
- Form with Webpicker and RSDC
  - Web Picker
  - Restore Server Data Context
  - Double-click ActionSet
- Table with DLOV
  - List of Values in Table Column
  - Dependent List of Values in Table Column
  - Table Errors
  - Worksheet Menu Items
- Table with Webpicker
  - Web Picker
  - Workbook Menu Items
- Custom Upload Options
  - Custom Upload Options
  - Excel Validation
  - Entity level Validation
- Table with Custom Download For Insert
  - Custom Download For Insert
  - Worksheet Events
- Search Form with Resultant ROT
  - Databound Search Form
  - Dynamically Generated Hyperlink
  - Excel formula in Table Column
- Master Form-Detail ROT
  - Master Form - Detail Table
  - Calculated fields
- Table with Dynamic Columns
  - Dynamic Columns in Table
  - Styles Based on EL Expressions
  - Row Limit

- Table with Polymorphic VOs
- Hierarchical Table
  - Model API
- Overriding reserved resource bundle
- Custom Error Handling
- Worksheet Protection
- Support for merged cells in form components
- Default runtime values for resource properties
- Progress bar

## Software Requirement

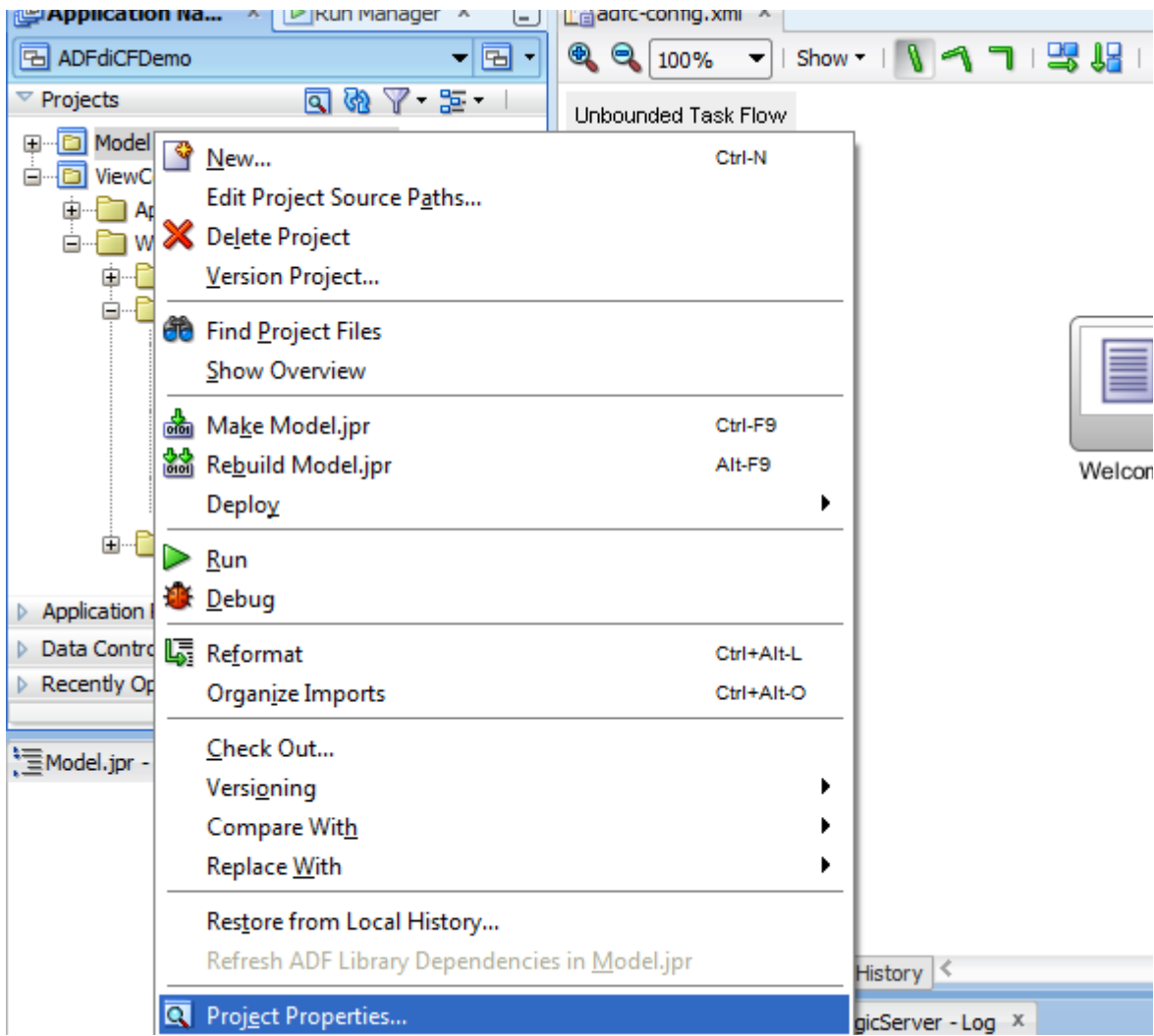
- **Oracle JDeveloper 11g Release1(11.1.1.7.0)**
- Access to Oracle Database schema

## Pre-requisites

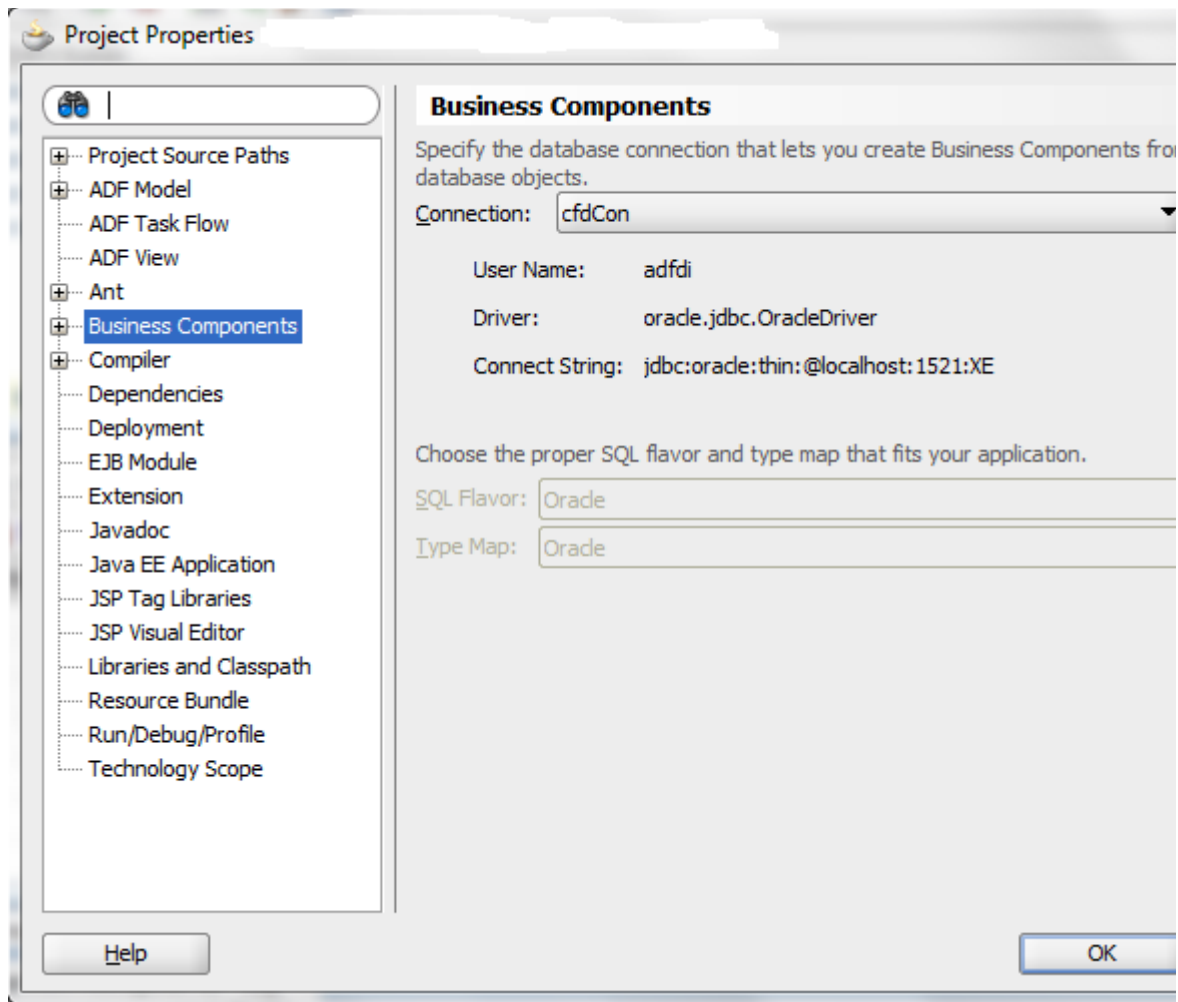
- Microsoft Office 2007 Standard Edition
- **Configuring Excel to work with ADF Desktop Integration**
- **Installing ADF Desktop Integration**

## Running and Invoking Demo application

1. Download the application from [here](#) and extract it (extracted location is referred as APPLICATION\_HOME)
2. Run the SQL Script included with the application (APPLICATION\_HOME/DBSchema/cfdemocreateschema.sql) by connecting as sys user to create a new schema (adfdi)
3. Run the SQL Script included with the application (APPLICATION\_HOME/DBSchema/cfdemopopulateschema.sql) by connecting as newly created user (adfdi) to create the tables and populate data
4. Open the application in Jdeveloper
5. Modify the database connections to point to database on which the sql script has been run by following the below steps
  - Invoke the Project Properties of the Model project



- o Select Business Components node



- Change the connection details by clicking on the edit (pencil) icon

Edit the connection details of the existing database connection.

Connection Exists In:  Application Resources  IDE Connections

Connection Name:

Connection Type:

Username:  Role:

Password:   Save Password

- Oracle (JDBC) Settings -

Enter Custom JDBC URL

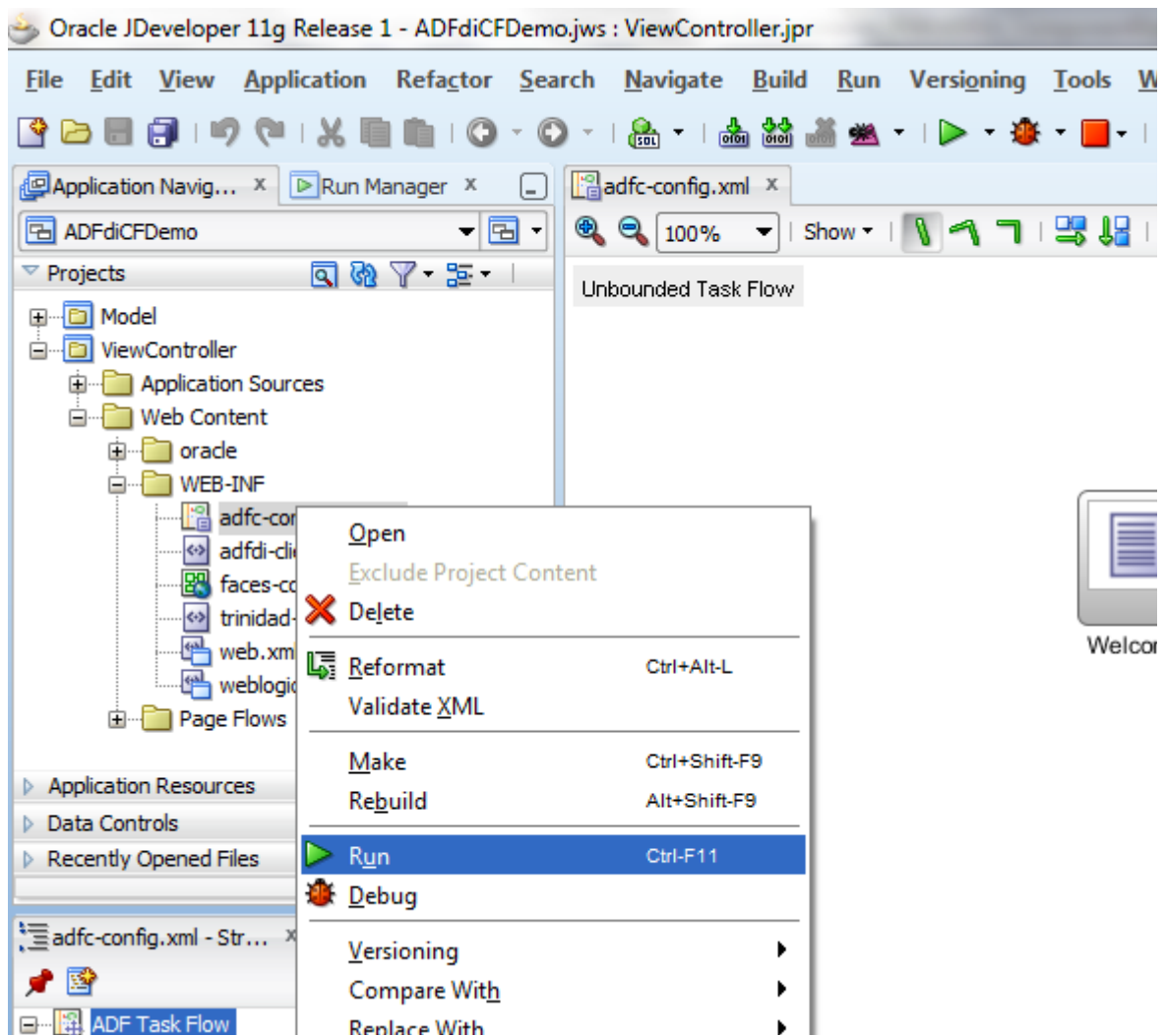
Driver:

Host Name:  JDBC Port:

SID:

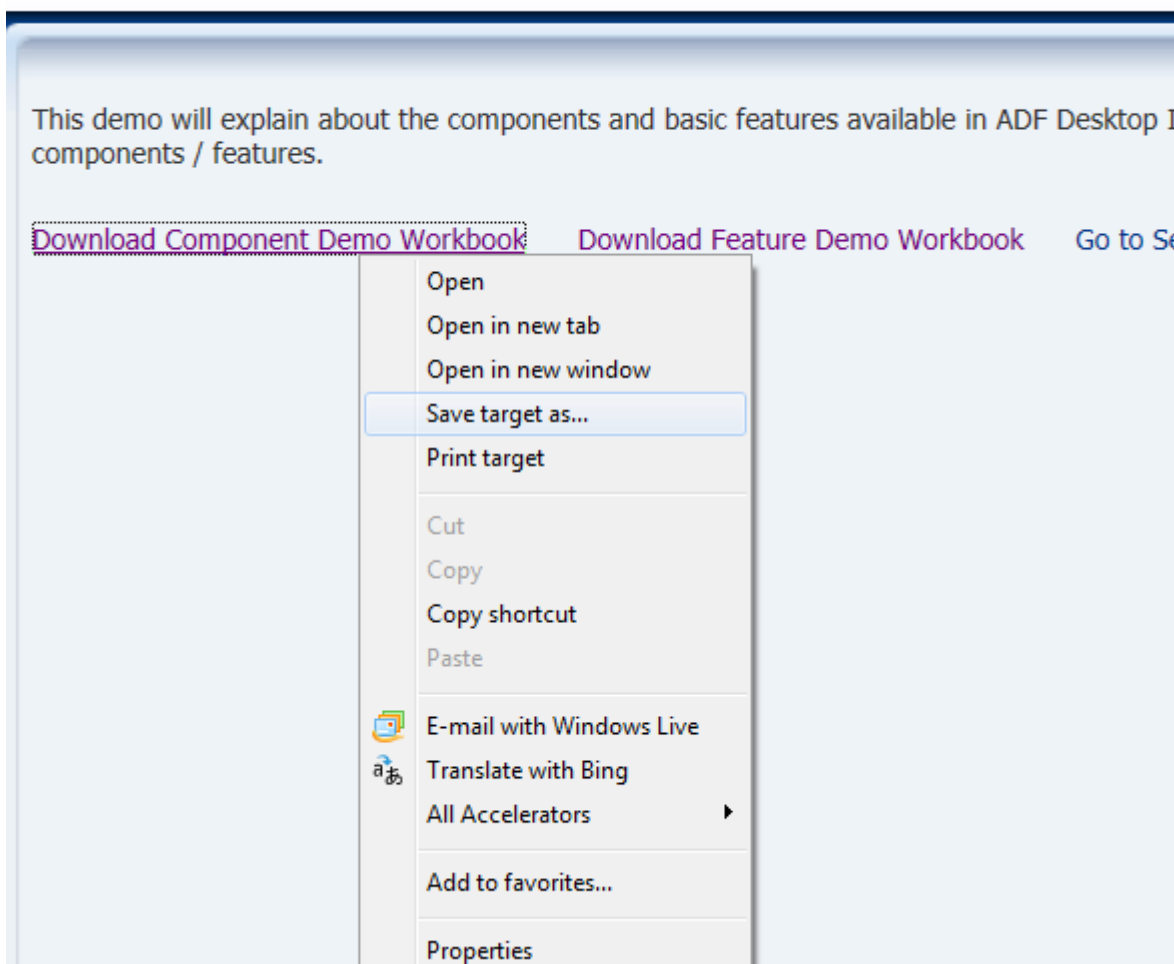
Service Name:

- Save and Compile all the projects
- Run the adfc-config.xml file available under View Controller project to start the Integrated WLS, deploy the Application and to run the page



- Follow the below steps for running the Component Demo Workbook
  - Download the Component Demo workbook and save it to the local file system (ex: to Desktop)

## ORACLE® ADF Desktop Integration Component and F



- Open the workbook saved to the local file system
- Click on Yes in the connection confirmation dialog

A	B	C	D	E	F	G	H
---	---	---	---	---	---	---	---

# ORACLE® ADF Desktop Integration

## Component Demo



[About](#)

[ADF Input Text](#)

[ADF Output Text](#)

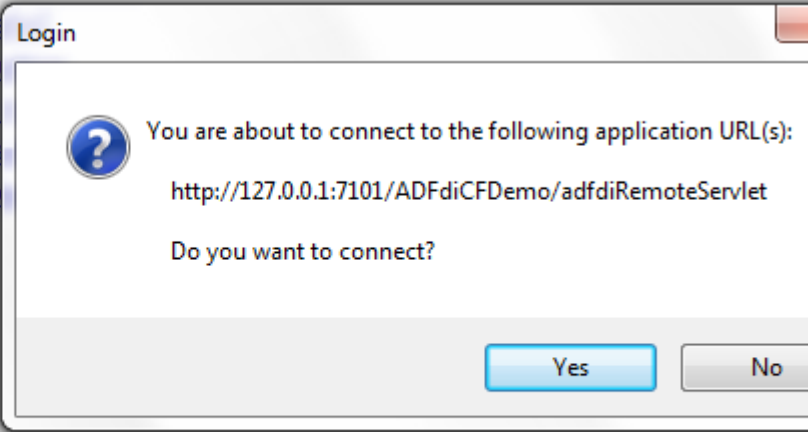
[ADF L](#)

[ADF B](#)

[ADF L](#)

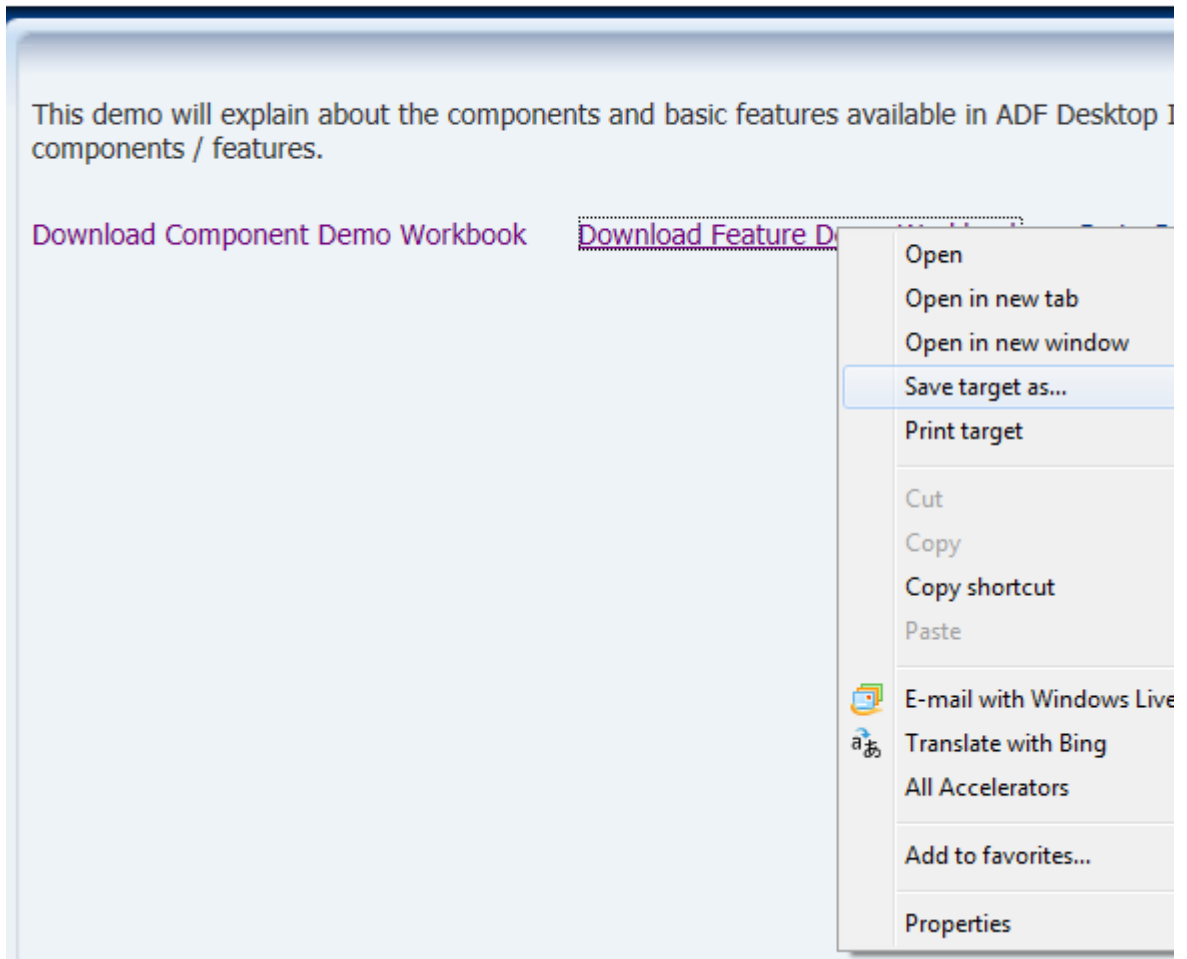
[ADF T](#)

[ADF R](#)



- Follow the hints given in the workbook to complete the demo
- Follow the below steps for running the Feature Demo Workbook
  - Download the Feature Demo Workbook and save it to the local file system (ex: to Desktop)

## ORACLE® ADF Desktop Integration Component and F

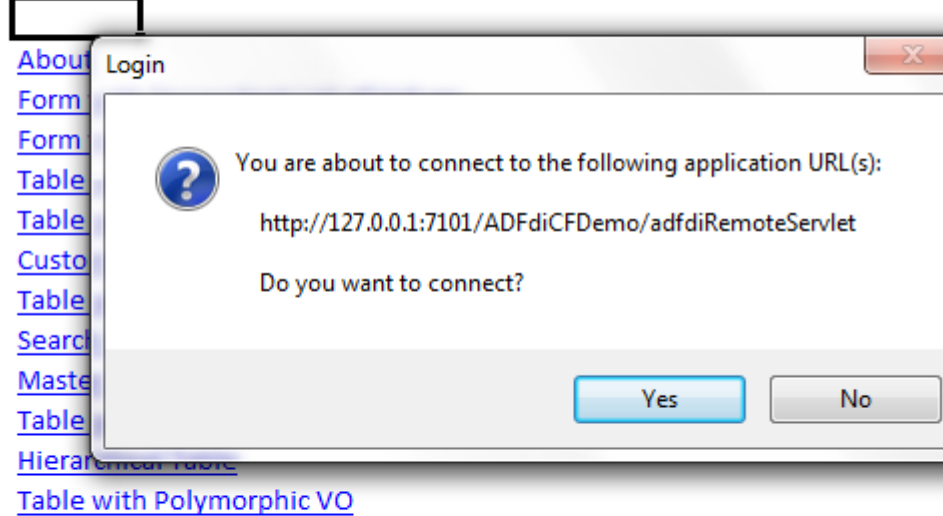


- Open the workbook saved to the local file system
- Click on Yes in the connection confirmation dialog

A	B	C	D	E	F	G	H
---	---	---	---	---	---	---	---

# ORACLE® ADF Desktop Integration

## Feature Demo




- Follow the hints given in the workbook to complete the demo
- Follow the below steps for downloading the search results into Excel workbook
  - Click on the Go to Search Page link
  - Enter the search criteria in the Enter Product Name field and hit the Search Products By Name button

## ORACLE ADF Desktop Integration Component and

Hint : Enter a search term (For ex: Plasma%) in the input text and hit the Search Product  
Excel Workbook

Enter Product Name

View ▾  Detach

Product Name	Parent Category
Plasma HD Television	

- Click on Export Result to Excel button and save the workbook to local file system (ex: to Desktop)

## ORACLE ADF Desktop Integration Component and Feature

Hint : Enter a search term (For ex: Plasma%) in the input text and hit the Search Products By Name

Enter Product Name

View ▾

Product Name

Plasma HD Television

Windows Internet Explorer

What do you want to do with ProductResults\_Pub.x

Type: Microsoft Office Excel 12  
From:  
...:7101/ADFdiCFDemo/oracle/adfdi/demo/cf/view/excel/rt/Produc

→ Open  
The file won't be saved automatically.

→ Save

→ Save as

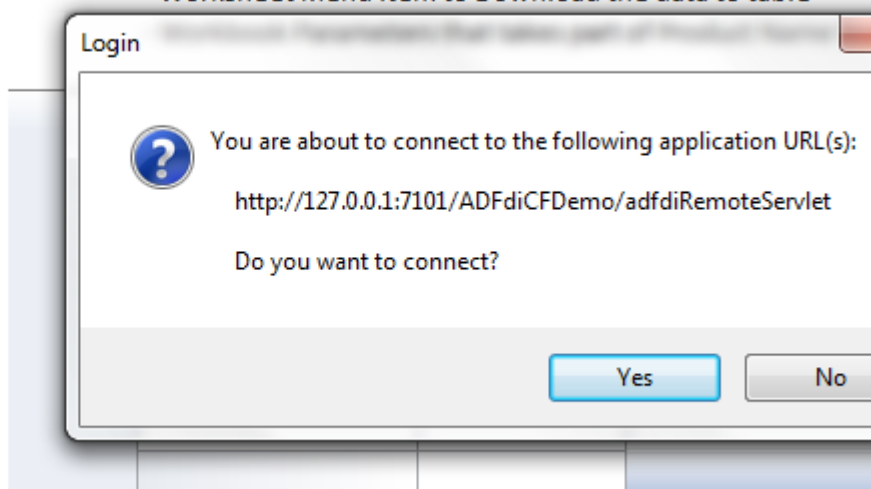
- Open the workbook saved to the local file system
- Click on Yes in the connection confirmation dialog



## ADF Table with DLOV

The example below shows an editable table with

- List of Values(CategoryId) that depends on another List of Values
- Button(Save Changes) bound to component actions(Table.I
- Output Text to display Table Errors and error messages in d
- Worksheet Menu Item to Download the data to table



- Follow the hints given in the workbook to complete the demo

**Hint: Design Time Workbooks can be found under APPLICATION\_HOME/ViewController/src/oracle/adfdi/demo/cf/view/excel/dt folder**