

# Not For Distribution Outside ACE Director Program



# Fusion Applications - ACE Director Update June 2010

Debra Lilley UKOUG / Fujitsu

Fact or Fiction?

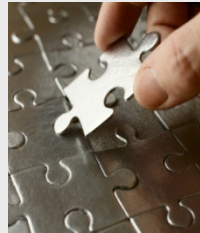


Technology or Applications?



# Oracle Fusion Applications

## Design Principles



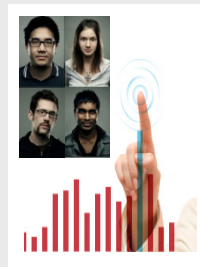
### Next Generation ADAPTABILITY

- Optimize business flows with process configurability and applications extensibility
- Easily integrate with other applications with native SOA
- Provide business users with flexible organizational modeling



### Next Generation PRODUCTIVITY

- Drive optimal operational decisions with embedded business intelligence
- Empower information workers with rich, pervasive, personalized user experience
- Connect people to people with Enterprise 2.0-enabled business processes



### Next Generation MANAGEABILITY

- Improve efficiency with centralized financial management components
- Protect information privacy and ensure statutory compliance with centralized security, audit and controls
- Achieve superior ownership experience with unmatched manageability

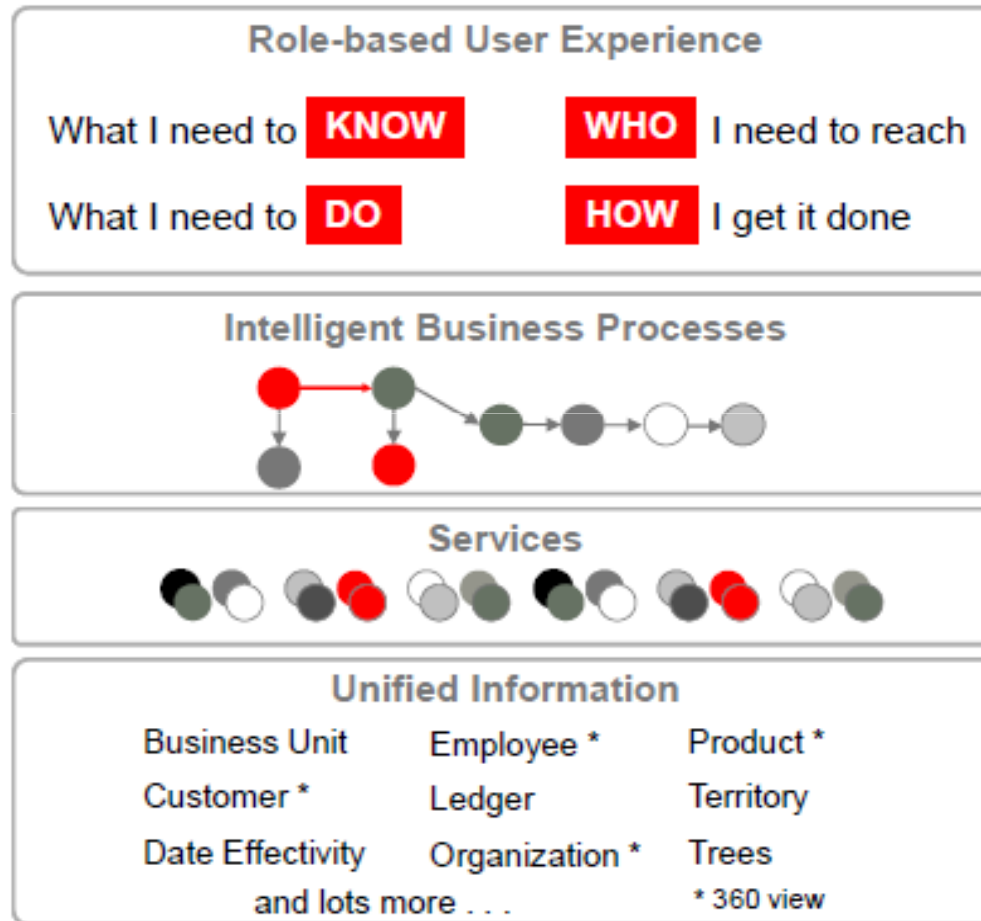
# Actually All You Need To Know



- Each Data Object is defined
- Every conceivable service for each object is defined
- A process is simply calling those services
- Multiple Data sources OLTP, OLAP, Essbase
- FMW technology giving the user experience
  - Check out Jeremy presentation ODTUG Friday 16<sup>th</sup> July



# Fusion Applications Structure



# Integrating the Enterprise



Integrated business processes



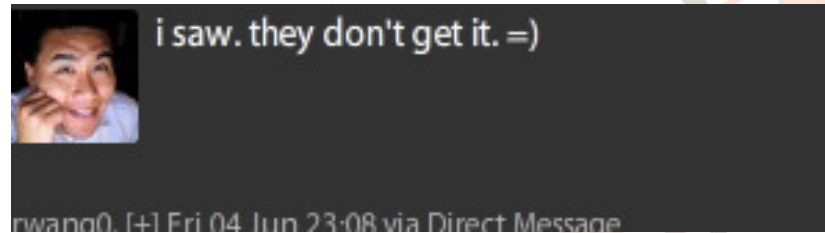
Integrated user experience



Integrated business intelligence

# Don't think of it all a replacement or upgrade

- Partner Example



- Existing Applications (Apps Unlimited) are NOT Legacy and continue to be developed
- Co-existence with Apps Unlimited or other apps
  - COI

# What's in it?

- Core Financials, HR, Projects, Inventory, CRM and some aspects of Sales and Marketing. The core HR will include large country payroll, talent management, compensation workbench
- Data Model – EBS and Siebel
- Features and Functions – PeopleSoft , there are 4 changes to the data model (DFF's won over chart fields but will be enhanced):
  - Trees
  - Date effective
  - Set ID and Business Unit (like EBS Org ID)
  - Person Model – **multiple assignments** and roles
- Lots of Web 2.0 i.e. performance management
  - Social networking around managers who share same issues
  - Staff who have same objectives

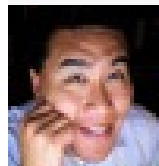


# What do People think of Fusion Apps?

- Floyd Teter “*it’s all about the experience*”  
<http://orclville.blogspot.com/>
- Basheer Khan “*Why We Can't Wait for Fusion Applications*”.  
<http://khanb.blogspot.com/>
- Debra Lilley “*How Proud am I*” (about UKOUG input)  
<http://www.debrasoracle.blogspot.com/>

**Oracle ACE Directors - APPLICATIONS**

# Early Adopters



**rwang0** Hearing positive news from early adopters of [#oracle](#) [#fusion](#) [#apps](#) [#erp](#) [#nextgen](#) - yes there's a product out there!



about 4 hours ago from TweetDeck

Retweeted by you and 1 other



Reply



Retweeted (Undo)



# 10 Things You Can Do Today to Prepare for the Next Generation Applications

## *Applications Best Practices*

- A** Keep Current with the Oracle Applications Releases
- B** Inventory your Enterprise Business Assets
- C** Prepare your Roadmap for the Future

## *Leverage Future-Proof Solutions and Technology Today* *Extend the Value of Oracle Applications Unlimited*

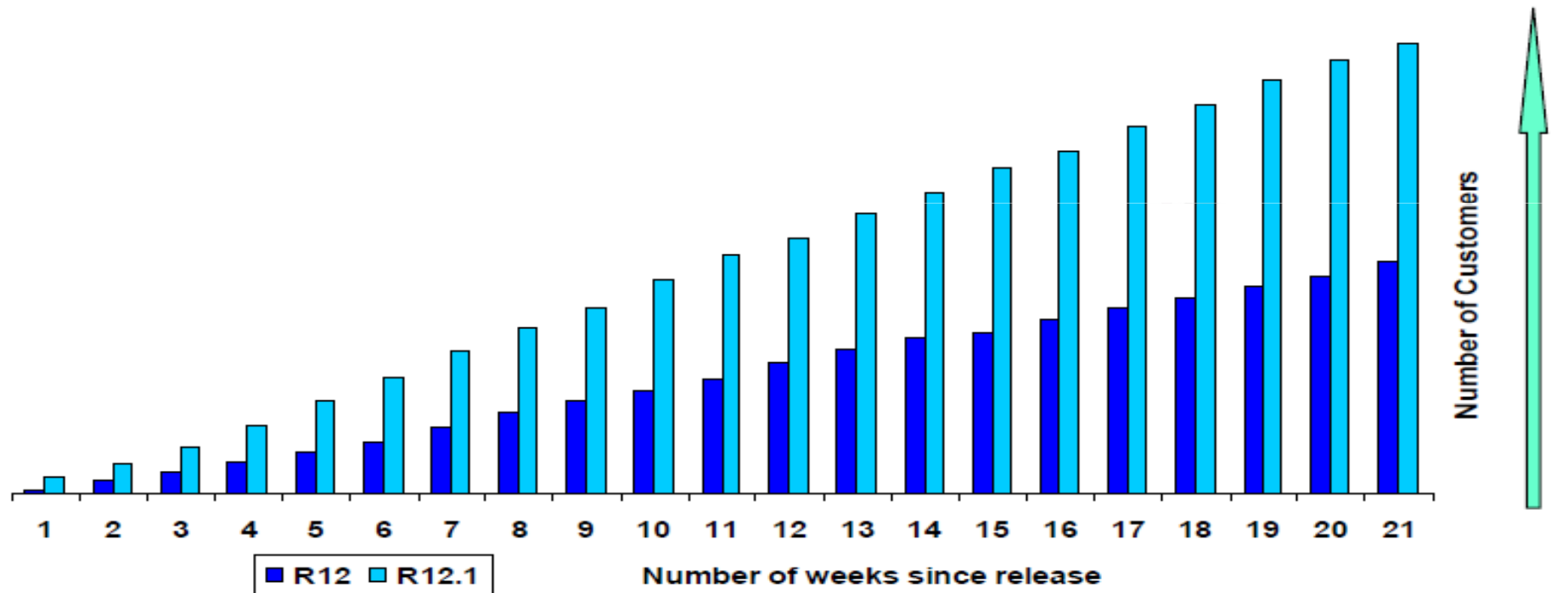
- 1** Rethink your “Customization” Strategy
- 2** Consolidate your Master Data
- 3** Embrace SOA-Based Integration
- 4** Extend your Business Intelligence Applications Portfolio
- 5** Adopt Enterprise Reporting & Publishing
- 6** Secure your Global Enterprise
- 7** Increase Information Worker’s Productivity
- 8** Centralize your Document Management
- 9** Consider Grid Infrastructure
- 10** Centralize your Applications Lifecycle Management

# Who is where? (as at Sept 09)



## Customer Uptake

Release 12 Vs. Release 12.1



Over 20 customers Live on 12.1

## Big guess – where will we be in 5 years?

- The Past tells us first release slow to adopt especially existing customers
- However Fusion is not an all or nothing
- Mix & Match
  - Fusion GL with EBS Procure to Pay
  - Same Integration internal to Fusion will integrate different applications
  - At your own pace
- My prediction 10 years before numbers on full Fusion higher than EBS, 6 years for partial implementations

# Help

- For Me
  - 42 Real Life Examples of FMW with Apps
- For You
  - Question Time for Steve Miranda – 2weeks, catch me in the bar

