

# Oracle® OLAP

## OBIEE Plug-in for Analytic Workspace Manager User's Guide

for OBIEE 10g

E18648-01

January 2011

---

Oracle Business Intelligence Enterprise Edition (OBIEE) Plug-in for Analytic Workspace Manager lets you quickly create an OBIEE 10g repository that enables the OBIEE Server (and therefore any OBIEE client, including Dashboards, Answers, Delivers, and the MS Office Plug-in) to query Oracle Database 11g OLAP cubes.

In this document, most of the figures are screen captures that depict dialog boxes that you encounter in the process of using OBIEE Plug-in for Analytic Workspace Manager and Oracle BI Administration Tool. In the figures, red boxes enclose the aspects of the dialog box that the figure illustrates.

The examples shown in the figures use the OLAPTRAIN schema and the SALESTRACK analytic workspace. You can download scripts that install the schema and create the analytic workspace from the Oracle Technical Network (OTN) website at

<http://www.oracle.com/technetwork/database/options/olap/olap-downloads-098860.html>.

This document has the following topics.

- [Describing OBIEE Plug-in for Analytic Workspace Manager](#)
- [Overview of Creating OBIEE Metadata from a Cube](#)
- [Task 1: Exporting OBIEE Metadata from Analytic Workspace Manager](#)
- [Task 2: Importing OBIEE Metadata into an OBIEE 10g Repository](#)
- [Task 3: Specifying Aggregation Rules for Measures](#)
- [Task 4: Creating a Group and Adding the Data Filter](#)
- [Task 5: Configuring the Connection Pool](#)
- [Task 6: \(Optional\) Verifying the Connection](#)
- [Task 7: Saving the Repository](#)
- [Task 8: Cleaning Up](#)
- [Documentation Accessibility](#)

### Describing OBIEE Plug-in for Analytic Workspace Manager

This section describes OBIEE Plug-in for Analytic Workspace Manager. It contains the following topics.

- [Product Support](#)
- [Supported Versions of Oracle Database](#)

- [What Is an Analytic Workspace Manager Plug-in?](#)
- [What Does OBIEE Plug-in for Analytic Workspace Manager Do?](#)
- [Requirements for Analytic Workspace Manager](#)
- [Installing OBIEE Plug-in for Analytic Workspace Manager](#)

## Product Support

OBIEE Plug-in for Analytic Workspace Manager is a product of Oracle OLAP Cube Labs. Products of Oracle OLAP Cube Labs are delivered through Oracle Technical Network (OTN) without cost.

---

---

**Note:** Oracle OLAP Cube Lab products are not supported by Oracle Support. Please post questions, bug reports, and enhancement requests on the OLAP Forum on OTN at <http://forums.oracle.com/forums/forum.jspa?forumID=16>.

The Analytic Workspace Manager team actively monitors this forum. Be sure to start your posting with "OBIEE Plug-in for AWM".

---

---

## Supported Versions of Oracle Database

OBIEE Plug-in for Analytic Workspace Manager supports Oracle Database 11g, Release 1 (11.1), version 11.1.0.7 and later, and Oracle Database 11g, Release 2 (11.2).

## What Is an Analytic Workspace Manager Plug-in?

Analytic Workspace Manager allows third parties to add new features by providing plug-ins. A plug-in is a program that is launched from Analytic Workspace Manager. Plug-ins share the database session with the instance of Analytic Workspace Manager. You can use Analytic Workspace Manager plug-ins to add to or otherwise alter cubes and dimensions, to define calculations, or for other purposes. Because a plug-in shares a database connection and can modify your model, or even your data, be sure to use plug-ins only from trusted sources. Analytic Workspace Manager plug-ins cannot obtain the password used to start the Oracle Database session.

## What Does OBIEE Plug-in for Analytic Workspace Manager Do?

OBIEE Plug-in for Analytic Workspace Manager allows you to create the Physical, Business Model and Mapping, and Presentation layers of an OBIEE 10g repository. You can use the repository to query an Oracle Database 11g OLAP cube using SQL. A repository created by OBIEE Plug-in for Analytic Workspace Manager allows OBIEE to query all data in the cube, including summary level data and measure calculations.

OBIEE Plug-in for Analytic Workspace Manager does not alter the definition or content of your cubes or dimensions.

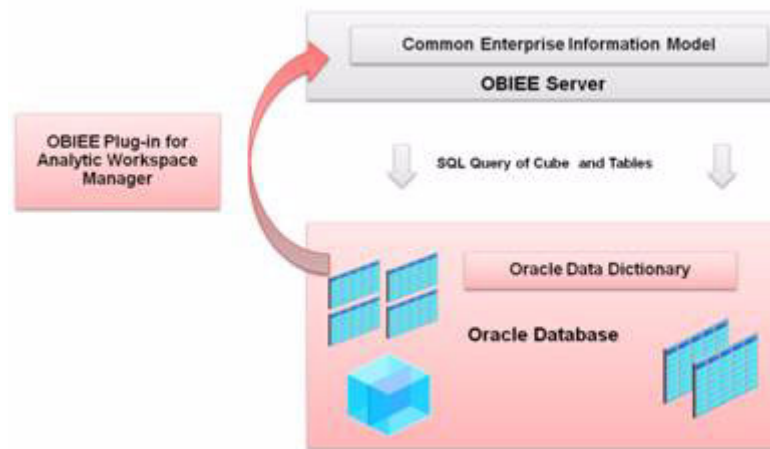
OBIEE Plug-in for Analytic Workspace Manager reads the definitions of one or more cubes in a single analytic workspace, and the dimensions of the cubes, from the Oracle Data Dictionary and generates OBIEE UDML code that be used by Oracle BI Administration Tool. The plug-in exports the cube metadata to the system clipboard or to a file.

The plug-in includes dimension hierarchies in the exported metadata. It uses the following rules to determine the hierarchies to export.

- If the dimension has a default hierarchy, then the plug-in exports that hierarchy.
  - If the default hierarchy is a level-based hierarchy, then the plug-in also exports any other level-based hierarchy that shares the same lowest level as the default hierarchy.
  - If the default hierarchy is a value-based hierarchy, then the plug-in exports only that value-based hierarchy. The value-based hierarchy appears as a flat list when you import it into an OBIEE repository.
- If the dimension does not have a default hierarchy, then the plug-in exports the first hierarchy of the dimension.
  - If the first hierarchy is a level-based hierarchy, then the plug-in also exports any other level-based hierarchy that shares the same lowest level as the first hierarchy.
  - If the first hierarchy is a value-based hierarchy, then the plug-in exports only that value-based hierarchy.

Figure 1 illustrates the movement of analytic workspace metadata from the Oracle data dictionary to the Common Enterprise Information Model in an OBIEE server.

**Figure 1 OBIEE Plug-in for Analytic Workspace Manager Creates OBIEE Metadata**



The plug-in generates a Grand Total logical level under each dimension in the Business Model and Mapping layer of an OBIEE repository. Under the logical level are logical columns for the attributes that apply to the dimension. In Analytic Workspace Manager, these attributes are mapped to different source columns for different levels of a hierarchy. For example, the Standard hierarchy of the Product dimension has six levels. For each level, the long description attribute of the dimension is mapped to a different column in the PRODUCTS relational table. The plug-in provides these Grand Total folders so that the model with attributes can pass the OBIEE consistency check.

OBIEE Plug-in for Analytic Workspace Manager also generates a data filter for each cube. OBIEE uses this data filter to force joins between dimension views and cube views, even when the dimension is not part of the query. This is necessary to generate optimal SQL for querying the cube.

The methodology used to generate the OBIEE metadata is described in the technical white paper *Using Oracle Business Intelligence Enterprise Edition with the OLAP Option to the Oracle Database 11g*. You can download this paper from OTN at [http://www.oracle.com/technology/products/bi/olap/Oracle\\_OLAP\\_11g\\_BIEE\\_TWP.pdf](http://www.oracle.com/technology/products/bi/olap/Oracle_OLAP_11g_BIEE_TWP.pdf).

## Requirements for Analytic Workspace Manager

To use this Analytic Workspace Manager plug-in, your analytic workspace must meet the following requirements:

- The default hierarchy of each dimension must be a level-based hierarchy.
- Each dimension must have a long description attribute.
- The Create Level Attribute Columns in Views option must be selected for the long description attribute of each dimension. (This option is on the **General** tab of the attribute.)
- Each cube must have at least one measure.

## Installing OBIEE Plug-in for Analytic Workspace Manager

To install OBIEE Plug-in for Analytic Workspace Manager, download the file `obieeplugin.jar` and copy it to the directory that is specified for plug-ins by Analytic Workspace Manager. You enable the use of plug-ins and specify the directory for plug-ins in the Configuration dialog box on the **Tools** menu of Analytic Workspace Manager. If you have enabled plug-ins, then the next time you start it, Analytic Workspace Manager recognizes the new plug-in.

You can download the plug-in from the Cube Labs section of the OTN website at <http://www.oracle.com/technetwork/database/options/olap/index.html>.

## Overview of Creating OBIEE Metadata from a Cube

The following topics describe the tasks involved in creating OBIEE metadata from one or more cubes in Analytic Workspace Manager.

- [Task 1: Exporting OBIEE Metadata from Analytic Workspace Manager](#) on page 5.
- [Task 2: Importing OBIEE Metadata into an OBIEE 10g Repository](#) on page 11.
- [Task 3: Specifying Aggregation Rules for Measures](#) on page 14.
- [Task 4: Creating a Group and Adding the Data Filter](#) on page 15.
- [Task 5: Configuring the Connection Pool](#) on page 19.
- [Task 6: \(Optional\) Verifying the Connection](#) on page 21.
- [Task 7: Saving the Repository](#) on page 21.
- [Task 8: Cleaning Up](#) on page 22.

## Task 1: Exporting OBIEE Metadata from Analytic Workspace Manager

The steps involved in exporting OBIEE metadata from Analytic Workspace Manager are described in the following topics.

- [Step 1: Select Cubes and Start OBIEE Plug-in for Analytic Workspace Manager](#)
- [Step 2: Specify Names and Options](#)
- [Step 3: Export the OBIEE Metadata for the Cubes](#)

### Step 1: Select Cubes and Start OBIEE Plug-in for Analytic Workspace Manager

To select cubes and start the plug-in, do the following.

1. In the Analytic Workspace Manager navigation tree, right-click an analytic workspace or a cube.
2. Select **Export to OBIEE Administrator** on the shortcut menu that appears.

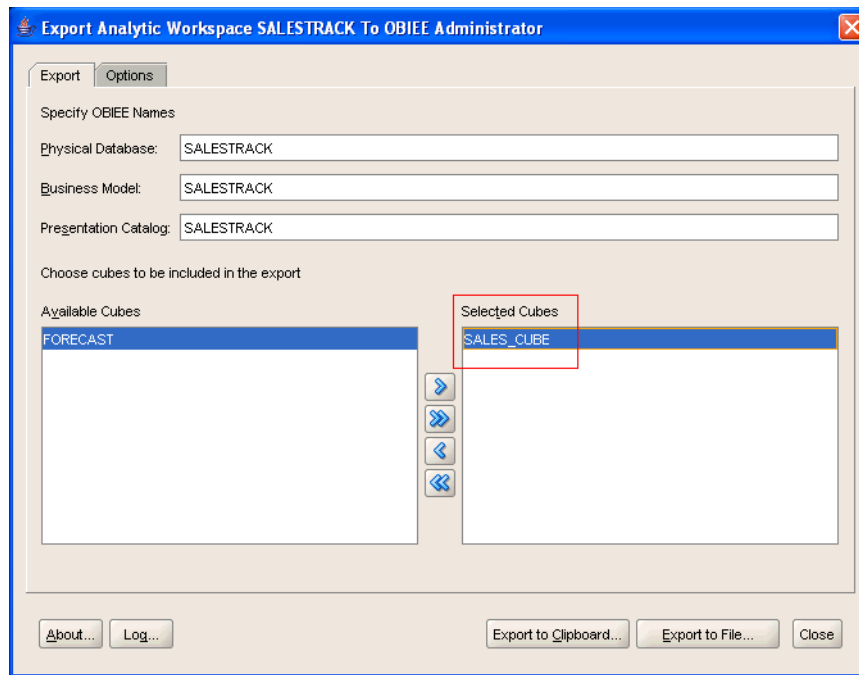
OBIEE Plug-in for Analytic Workspace Manager finds the OLAP cubes in the Oracle Data Dictionary and determines if they are compatible with OBIEE. The plug-in automatically includes all of the dimensions of the cube in the metadata export.

OBIEE Plug-in for Analytic Workspace Manager displays a dialog box with the cube or cubes that you selected in the Selected Cubes list and other available cubes in the Available Cubes list.

[Figure 2](#) shows the dialog box that OBIEE Plug-in for Analytic Workspace Manager displays when the user has selected the SALESTRACK analytic workspace. At first both the SALES\_CUBE and the FORECAST cubes are in the Selected Cubes field.

[Figure 2](#) shows the dialog box after the user has moved the FORECAST cube to the Available Cubes field.

**Figure 2** *Selecting a Cube to Export*



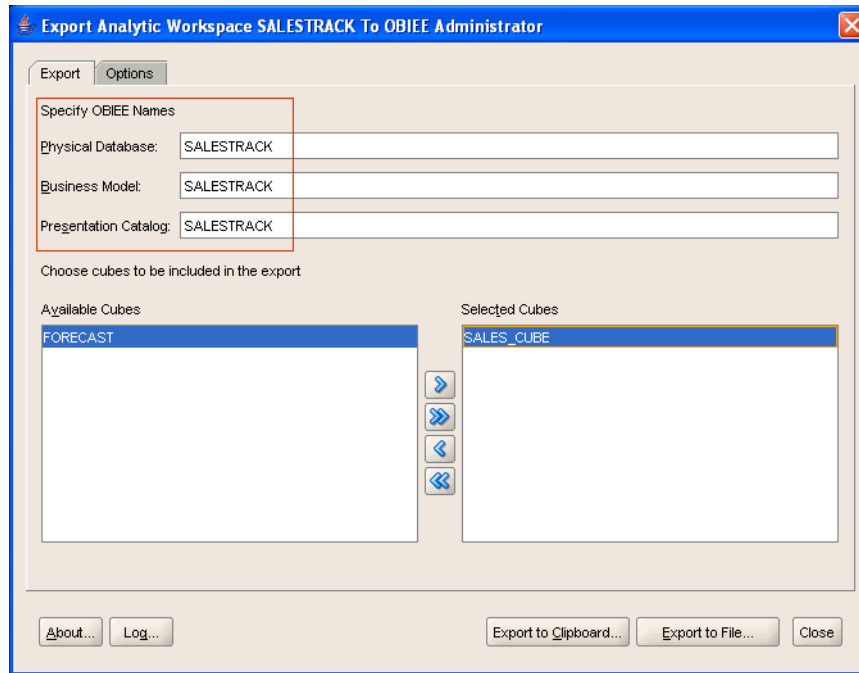
## Step 2: Specify Names and Options

To specify the names that you want the objects to have in the Physical, Business Model and Mapping, and Presentation layers of OBIEE, and to specify a naming option for logical tables and columns, do the following.

- On the **Export** tab, enter the names in the **Physical Database**, **Business Model**, and **Presentation Catalog** fields. The names you specify must not already exist in the target OBIEE repository file. See [Figure 3](#).
- On the **Options** tab, select an option. You can specify whether to use the analytic workspace object names or descriptions as the names for the logical tables and columns in the OBIEE metadata. See [Figure 4](#).

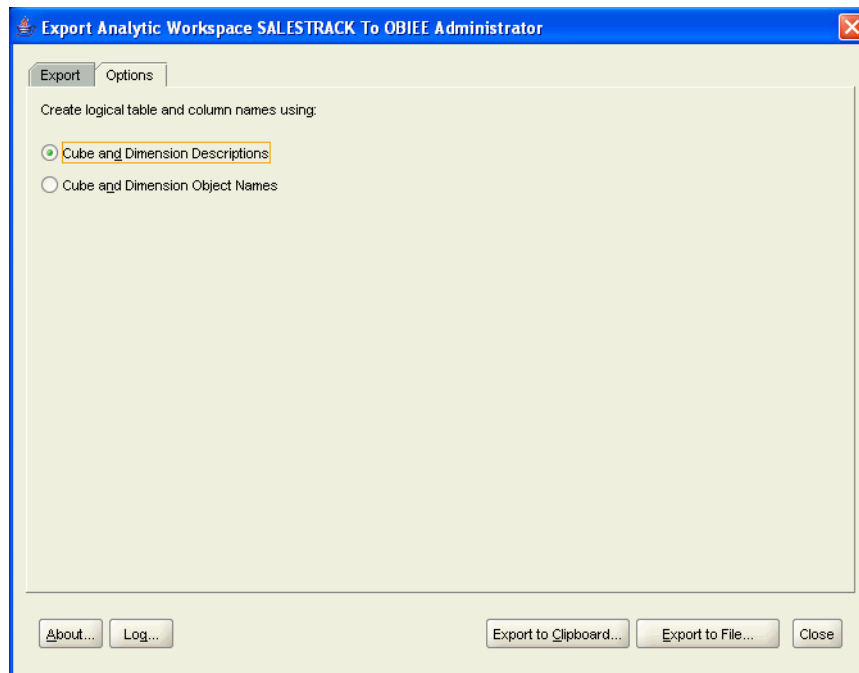
[Figure 3](#) shows the Export Analytic Workspace SALESTRACK to OBIEE Administrator dialog box. The **Physical Database**, **Business Model**, and **Presentation Catalog** fields all contain the name SALESTRACK.

**Figure 3 Specifying Names for the OBIEE Layers**



**Figure 4** shows the **Options** tab with the **Cube and Dimension Descriptions** option selected.

**Figure 4 Specifying Naming Options**



### Step 3: Export the OBIEE Metadata for the Cubes

You can export the metadata for a cube or cubes in either of the following ways.

- Export to the system clipboard. You can then paste the contents of the clipboard into an OBIEE repository. This option is described in ["Exporting to the System Clipboard"](#) on page 8.
- Export to a file. You can then copy the contents of the file and paste them into an OBIEE repository or you can use the OBIEE Server nQUDMLExec utility to import the metadata into a repository. This option is described in ["Exporting to a File"](#) on page 9.

#### Exporting to the System Clipboard

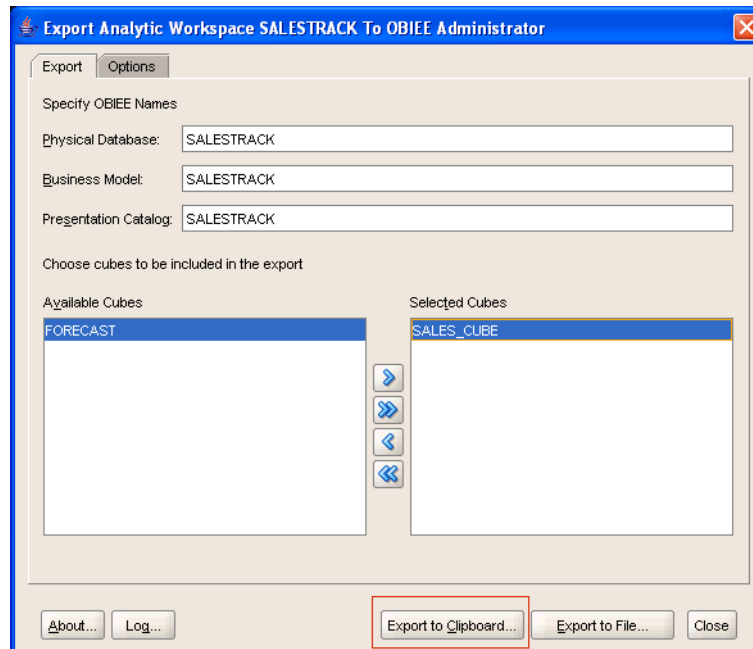
To export the OBIEE metadata to the system clipboard, do the following.

1. Click the **Export to Clipboard** button.
2. (Optional) To view the exported text in the clipboard, click **Yes** in the Clipboard Copy Completed dialog box.

You can paste the contents of the clipboard into an OBIEE repository as described in ["Importing OBIEE Metadata by Pasting It into the Repository"](#) on page 12.

[Figure 5](#) shows the Export Analytic Workspace SALESTRACK to OBIEE Administrator dialog box with the **Export to Clipboard** button emphasized.

**Figure 5** Exporting to the Clipboard

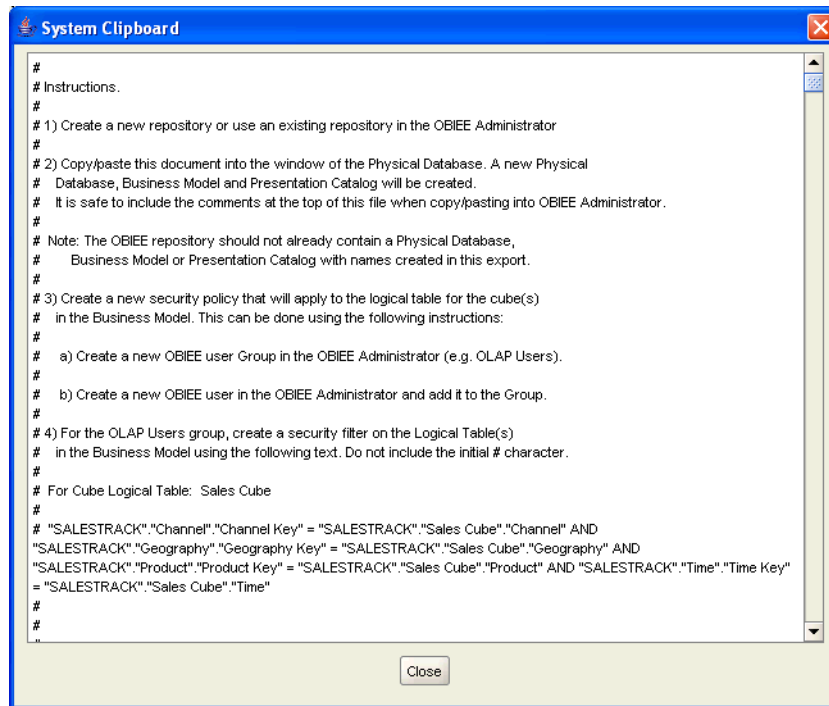


The text exported by OBIEE Plug-in for Analytic Workspace Manager contains instructions for importing the metadata into OBIEE, text for the data filter, and OBIEE UDML code. In ["Task 4: Creating a Group and Adding the Data Filter"](#), you copy the text for the data filter from the clipboard and paste it into an OBIEE repository. Note that the instructions and the data filter are commented out using the # character.

[Figure 6](#) shows the system clipboard with the first several lines of the exported text.



**Figure 6 Contents of the System Clipboard**



### Exporting to a File

To export the OBIEE metadata to a file, do the following.

1. Click the **Export to File** button. See [Figure 7](#).
2. In the Export to File dialog box, specify a filename and path and click **Save**. See [Figure 8](#).

You can import the OBIEE metadata in the file by copying and pasting it into a repository or by using the nQUDMLExec utility, as described in ["Importing OBIEE Metadata by Using the nQUDMLExec Utility"](#) on page 12.

[Figure 7](#) shows the Export Analytic Workspace SALESTRACK to OBIEE Administrator dialog box with the **Export to File** button emphasized.

**Figure 7 Exporting to a File**

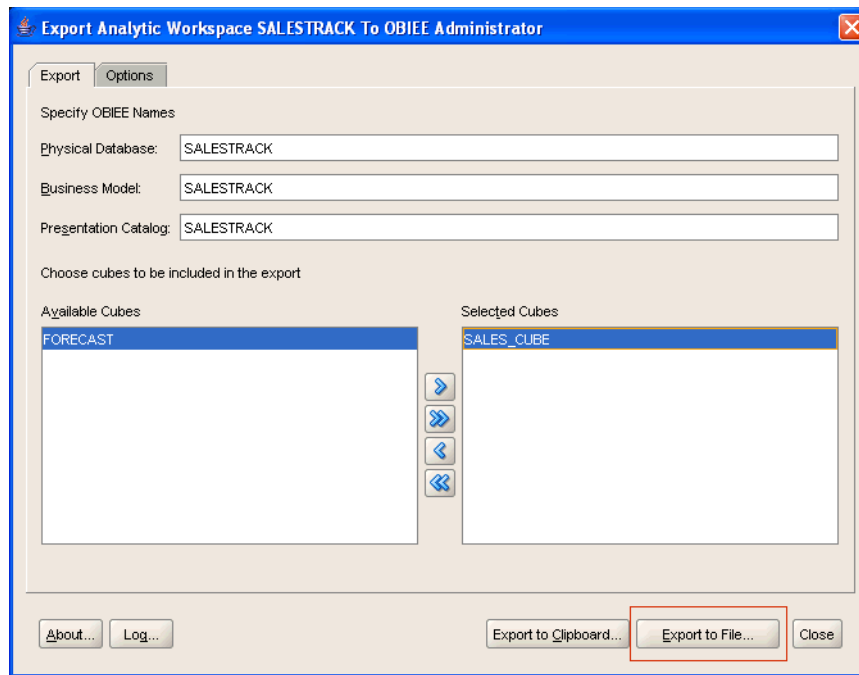
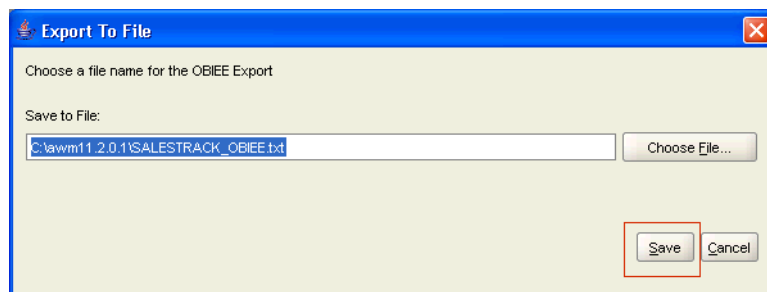


Figure 8 shows the Export to File dialog box with a path and filename in the **Save to File** field.

**Figure 8 Saving the Exported File**



The file created by OBIEE Plug-in for Analytic Workspace Manager contains instructions for importing the metadata into OBIEE, text for the data filter, and OBIEE UDML code. Later, in ["Task 4: Creating a Group and Adding the Data Filter"](#), you copy the text for the data filter from the exported file and paste it into an OBIEE repository. Note that the instructions and the data filter are commented out using the # character.

Figure 9 shows the exported file in Windows Notepad.

**Figure 9 Exported File in Windows Notepad**



```
#
# Instructions.
#
# 1) Use the OBIEE program nQUDMLExec to create a new repository file.
# For example:
# nqudmlexec -I SALESTRACK_OBIEE.txt -O SALESTRACK_OBIEE.rpd
# where:
# SALESTRACK_OBIEE.txt is the OBIEE export file.
# SALESTRACK_OBIEE.rpd is the target OBIEE repository file.
#
# OR
#
# Merge the exported OBIEE file with an existing OBIEE repository file.
# For example:
# nqudmlexec -U administrator -P password -I SALESTRACK_OBIEE.txt -B base.rpd -O
SALESTRACK_OBIEE.rpd
# where:
# administrator is the name of the OBIEE administrator account.
# password is the password of the administrator account.
# SALESTRACK_OBIEE.txt is the export OBIEE file.
# base.rpd is the name of an existing OBIEE repository file.
# SALESTRACK_OBIEE.rpd is the target OBIEE repository file.
#
# Notes:
# - The target OBIEE repository file can be an existing or new repository file.
# - The existing repository should not contain Physical Database, Business Model or
# Presentation Catalog names that exist in this export.
#
# 2) Copy the OBIEE Repository file, eg. SALESTRACK_OBIEE.rpd to the installed OBIEE
repository directory
# The OBIEE Repository directory in a default installation will be located
# in the directory C:\oracleBI\server\repository
#
# 3) Create a new security policy that will apply to the logical table for the cube(s)
# in the Business Model. This can be done using the following instructions:
#
# a) Create a new OBIEE user Group in the OBIEE Administrator (e.g. OLAP Users).
#
# b) Create a new OBIEE user in the OBIEE Administrator and add it to the Group.
#
# 4) For the OLAP Users group, create a security filter on the Logical Table(s)
# in the Business Model using the following text. Do not include the initial #
character.
#
# For Cube Logical Table: Sales Cube
#
# "SALESTRACK"."Channel"."Channel Key" = "SALESTRACK"."Sales Cube"."Channel" AND
"SALESTRACK"."Geography"."Geography Key" = "SALESTRACK"."Sales Cube"."Geography" AND
"SALESTRACK"."Product"."Product Key" = "SALESTRACK"."Sales Cube"."Product" AND
"SALESTRACK"."Time"."Time Key" = "SALESTRACK"."Sales Cube"."Time"
#
#
#
# 5) In the Physical Database, set the username and password in the connection pool.
#
# 6) Save the edits for the repository and confirm no problems with the consistency
check.
#
# The names for the top-level OBIEE Physical Database, Business Model and
Presentation Catalog are
# SALESTRACK, SALESTRACK, SALESTRACK
#
#
# Thu Sep 16 08:04:52 EDT 2010 generated by the OLAP UDML Generator Version 11.10
DECLARE DATABASE "SALESTRACK" AS "SALESTRACK" UPGRADE ID 1000 TYPE oracle10gr2
FEATURES (
  'MAX_TABLES_IN_SELECT' = '64',
  'MAX_COLUMNS_IN_GROUP_BY' = '100',
  'MAX_COLUMNS_IN_ORDER_BY' = '100',
  'CONVERT_BIG_INT_BITMASK' = '0x00000000',
```

## Task 2: Importing OBIEE Metadata into an OBIEE 10g Repository

You can import the OBIEE metadata for the analytic workspace cube or cubes into an OBIEE 10g repository by either pasting the exported metadata into the repository or by using the nQUDMLExec utility.

The following topics describe these methods.

- [Importing OBIEE Metadata by Pasting It into the Repository.](#)
- [Importing OBIEE Metadata by Using the nQUDMLExec Utility.](#)

## Importing OBIEE Metadata by Pasting It into the Repository

After you have exported the OBIEE metadata to the system clipboard or a file, you can paste the metadata into an OBIEE repository. To paste the metadata, do the following.

1. Create a new OBIEE repository or open an existing one. To create a new repository, do the following.
  - a. On the **Start** menu, select **Programs, Oracle Business Intelligence**, and then **Administration**.
  - b. In the Oracle BI Administration Tool dialog box, on the **File** menu, select **New**.
  - c. In the New Repository dialog box, in the **File Name** field, enter a name for the repository.
  - d. Click **Save**.

---

---

**Note:** If you open an existing repository, the metadata that you are importing should not already exist in the Presentation, Business Modeling and Mapping, and Physical layers of the repository.

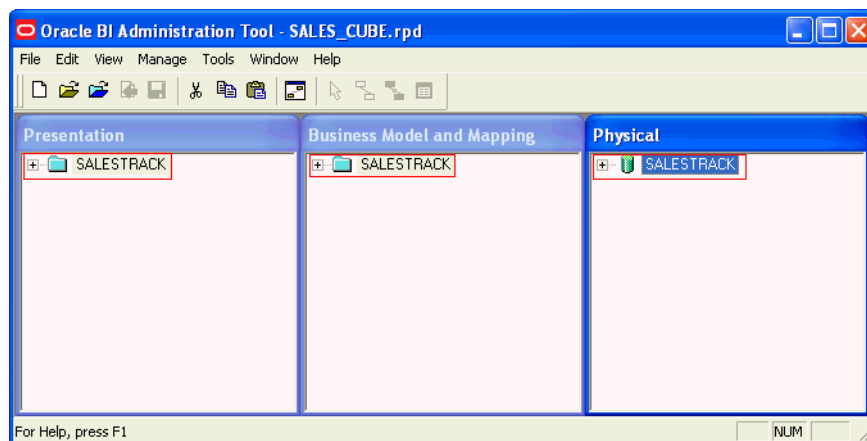
---

---

2. Paste the OBIEE metadata into the Physical layer of the repository. Do one of the following.
  - Paste the exported metadata in the system clipboard into the repository.
  - Copy the contents of the file containing the exported metadata and paste it into the repository.

Oracle BI Administration Tool populates the Presentation, Business Modeling and Mapping, and Physical layers with the imported metadata. [Figure 10](#) shows the SALES\_CUBE repository with the pasted metadata.

**Figure 10** *OBIEE Repository with Imported Metadata*



## Importing OBIEE Metadata by Using the nQUDMLExec Utility

Another method for importing the OBIEE metadata is to use the nQUDMLExec utility and the file exported by OBIEE Plug-in for Analytic Workspace Manager. Exporting to

a file is described in "Exporting to a File" on page 9. This section describes the OBIEE 10g nQUDMLExec command and contains examples of using it.

### Running the nQUDMLExec Utility

To run the nQUDMLExec utility, at the command line enter nQUDMLExec and the options that you want.

With the options, you can import the file into an existing repository or create a new repository. The nQUDMLExec.exe file is in the server\Bin directory of the OBIEE 10g installation.

The syntax of the nQUDMLExec command is the following.

```
nQUDMLExec [-U [userid]] [-P [password]] -I input_script_pathname
           [-B base_repository_pathname] -O output_repository_pathname [-8]
```

The arguments to the command are the following.

#### **-U *userid***

The *userid* value is the OBIEE administrator user ID. You need to specify the user ID only if you also use the *base\_repository\_pathname* argument.

#### **-P *password***

The *password* value is the OBIEE administrator password. Use this argument only if you also use the *userid* argument.

#### **-I *input\_script\_pathname***

The *input\_script\_pathname* value is the name of the file that contains the metadata you exported from Analytic Workspace Manager, as shown in [Figure 8](#) on page 11.

#### **-B *base\_repository\_pathname***

The *base\_repository\_pathname* value is the name of a new or existing OBIEE repository file.

#### **-O *output\_repository\_pathname* (optional)**

The *output\_repository\_pathname* value is the name of a new or existing OBIEE repository file. This argument is optional if you use the -B argument.

The following are the options for the use of the -B and -O arguments.

- If you do not specify an *output\_repository\_pathname* file, then you must specify a *base\_repository\_pathname* file. OBIEE adds the cube or cubes to the repository specified by the *base\_repository\_pathname* file.
- If you specify an *output\_repository\_pathname* file, then OBIEE creates a file with the specified name. If you do not also specify a *base\_repository\_pathname* file, then the *output\_repository\_pathname* file contains only the contents of the *input\_script\_pathname* file.
- If you specify an *output\_repository\_pathname* value and a *base\_repository\_pathname* file, then OBIEE creates a file with the *output\_repository\_pathname* name. That file contains the merged contents of the *base\_repository\_pathname* file and the *input\_script\_pathname* file.

#### **-8**

This specifies the UTL-8 character set.

### Examples of Using the nQUDMLExec Command

The following examples run the nQUDMLExec command from the Microsoft Windows command prompt. The first example creates the new repository file SALESTRACK\_OBIEE.rpd from the exported file SALESTRACK\_OBIEE.txt.

```
C:> nqudmlexec -I SALESTRACK_OBIEE.txt -O SALESTRACK_OBIEE.rpd
```

The next example creates the new repository file SALES\_AND\_FORECAST.rpd from the repository file SALESTRACK\_OBIEE.rpd and the exported file FORECAST\_OBIEE.txt.

```
C:> nqudmlexec -U administrator -P password -I FORECAST_OBIEE.txt  
-B SALESTRACK_OBIEE.rpd -O SALES_AND_FORECAST.rpd
```

### Task 3: Specifying Aggregation Rules for Measures

To have access to the aggregated data of the measures of the cube, you must specify aggregations rules for the measures. Also, if attribute columns are in the Presentation Catalog, then specifying an aggregation rule for a measure enables GROUP BY for reporting measure values by attribute, for example, to break out members of the Product dimension by Color and Size attributes.

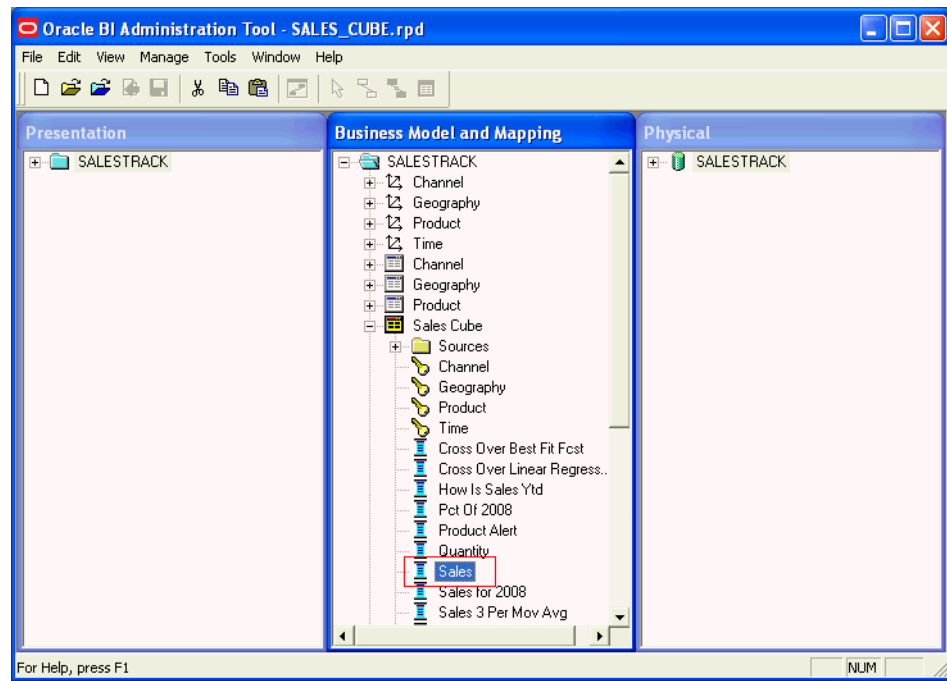
Not all measures are suitable for aggregation, however. It might make sense to allow SUM ... GROUP BY of a measure such as Sales but it probably does not make sense to aggregate measures that are percentages or rankings.

To specify a default aggregation rule for a measure logical column, do the following.

1. In the navigation tree of the Business Model and Mapping layer, double-click a logical column for a measure.
2. In the Logical Column dialog box, select the **Aggregation** tab.
3. Select one of the aggregate functions from the Default Aggregation Rule list.
4. Click **OK**.

[Figure 11](#) shows the Sales measure logical column selected in the Business Model and Mapping navigation tree.

**Figure 11** *Selecting a Measure*



## **Task 4: Creating a Group and Adding the Data Filter**

For OBIEE to create the correct style of SQL for cube and dimension views, you must add an OBIEE data filter on the logical table for the cube. This data filter forces joins between dimension and cube views when a dimension is not represented in a query.

You should add the data filter to the logical table for the cube in the Business Modeling and Mapping layer. You can enforce it for any user or group that queries the cube.

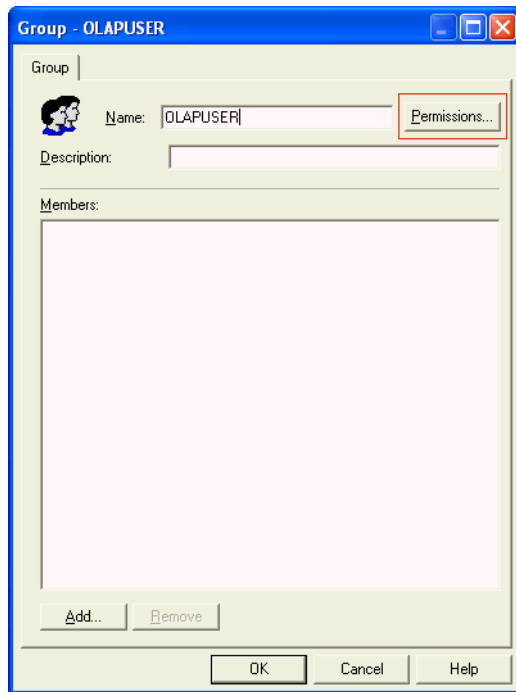
The figures in this task illustrate an example of adding the data filter. The example creates a group named OLAPUSER and adds the data filter to that group. It grants permission to query the cube to a user by adding the user to the group.

To create a group and add the data filter, do the following.

1. Create a user group. To create a new user group, do the following in Oracle BI Administration Tool.
  - a. On the **Manage** menu, select **Security**.
  - b. In the Security Manager dialog box, in the Security navigation tree, select **Groups**. On the **Action** menu, select **New** and then **Group**.
  - c. In the **Name** field of the Group dialog box, enter a name for the group.
  - d. Click **Permissions**.

Figure 12 shows the Group dialog box with OLAPUSER in the **Name** field.

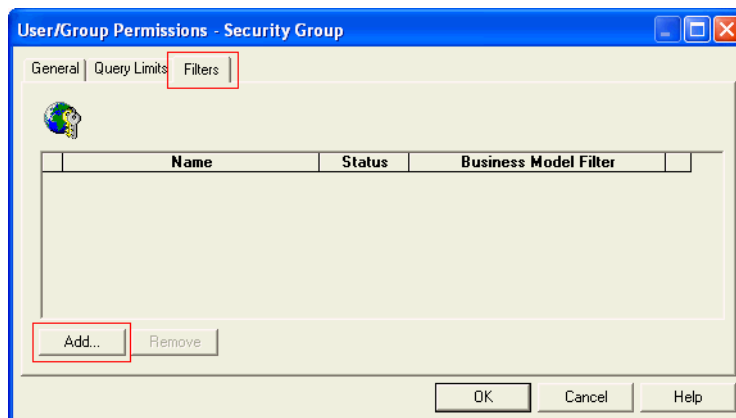
**Figure 12** *Creating the OLAPUSER Group*



2. In the User/Group Permissions - Security Group dialog box, click the Filters tab and then click **Add**.

Figure 13 shows the **Filters** tab of the User/Group Permissions - Security Group dialog box.

**Figure 13** *Adding a Data Filter*

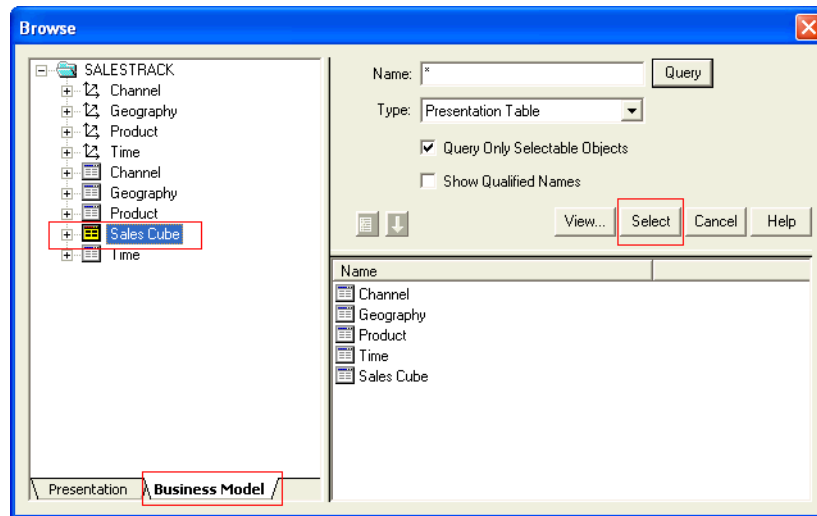


3. In the Browse dialog box, do the following.
  - a. Select the **Business Model** tab.
  - b. In the navigation tree, select the logical table that represents the cube.
  - c. Click **Select**.

Figure 14 shows the Browse dialog box with the Sales Cube logical table selected in the navigation tree on the **Business Model** tab.

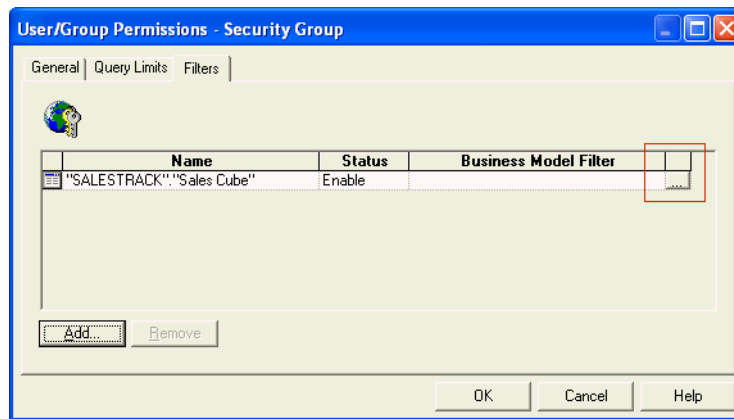


**Figure 14** *Selecting a Cube*



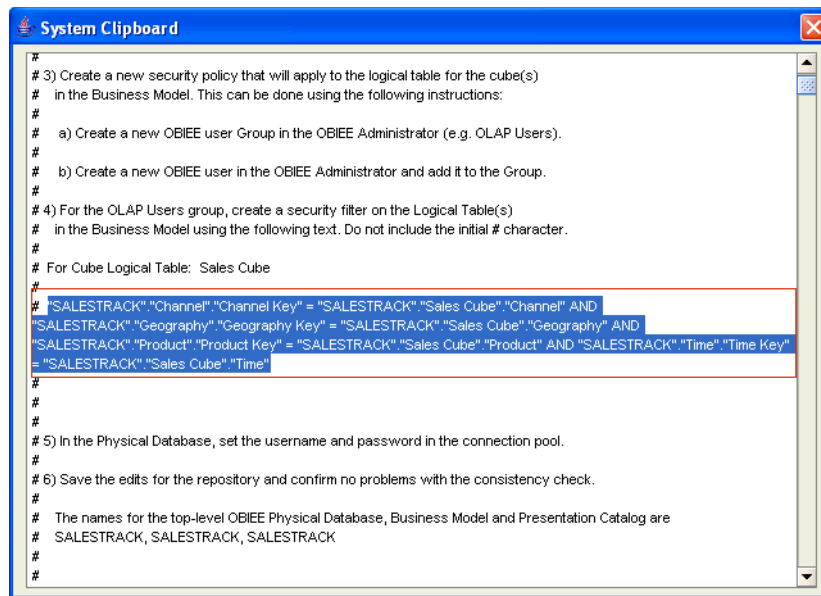
4. In the User/Group Permissions - Security Group dialog box, click the ellipsis (...) button. [Figure 15](#) shows that dialog box with the ellipsis button emphasized.

**Figure 15** *Opening the Expression Builder to Edit the Data Filter*



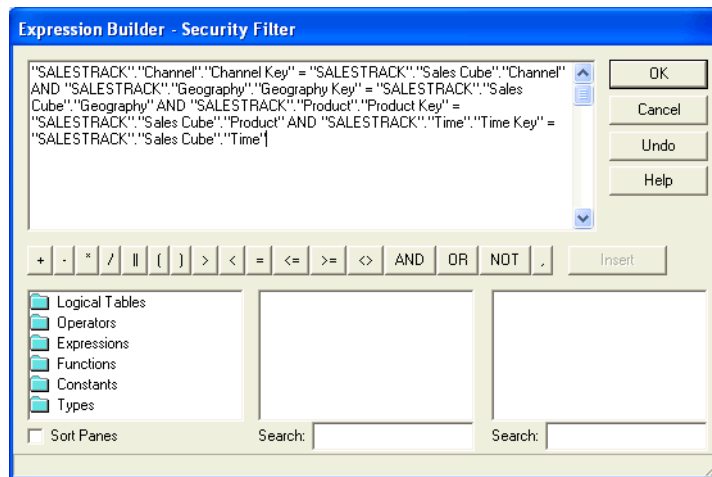
5. Copy the data filter from the metadata exported by OBIEE Plug-in for Analytic Workspace Manager. Be sure to avoid selecting the # comment delimiter character in the line that begins the data filter text. [Figure 16](#) shows the system clipboard with the data filter text selected.

**Figure 16 Copying the Data Filter from the Clipboard**



6. Add the data filter by doing the following.
  - a. Paste the data filter in the main field of the Expression Builder, as shown in [Figure 17](#), and click **OK**.
  - b. In the User/Group Permissions dialog box for the group, click **OK**.
  - c. In the Group dialog box, click **OK**.

**Figure 17 Pasting the Data Filter in the OBIEE Expression Builder**

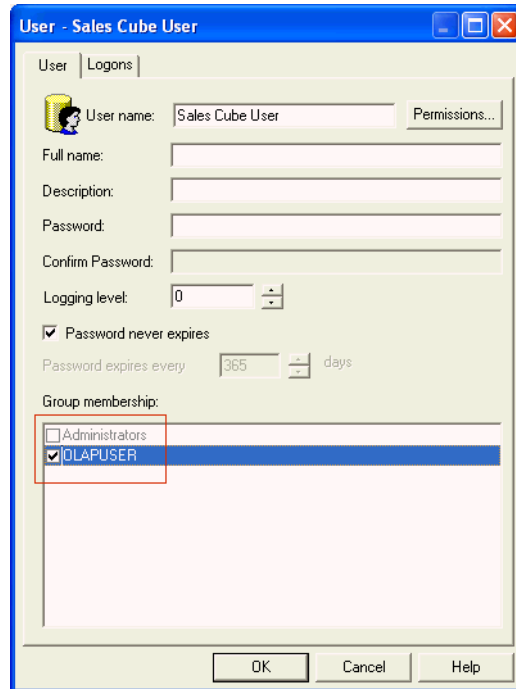


7. Add users to the group as appropriate. To add a user to a group, do the following.
  - a. In the Security Manager dialog box, in the Security navigation tree, select **Users**. On the **Action** menu, select **New** and then **User**.
  - b. On the **User** tab of the User dialog box, in the **User Name** field, enter a name for the user.

- c. In the **Group Membership** field, select the appropriate group or groups.
- d. Click **OK**.
- e. In the Security Manager dialog box, on the **Action** menu, select **Close**.

Figure 18 shows the User dialog box with Sales Cube User entered in the **User Name** field and with the OLAPUSER group selected in the **Group Membership** field.

**Figure 18 Adding a User to the OLAPUSER Group**



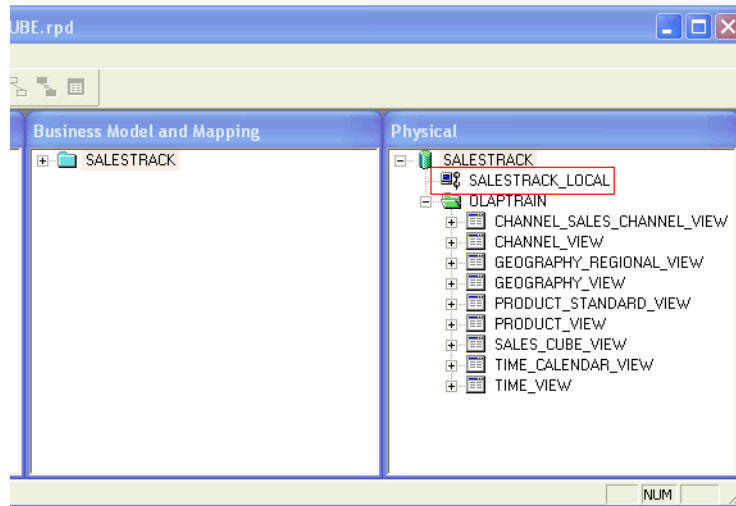
## Task 5: Configuring the Connection Pool

OBIEE Plug-in for Analytic Workspace Manager creates a connection pool in the Physical layer in the repository. The connection pool contains all of the connection information that OBIEE needs to connect to an Oracle Database instance except for the database user name and password. Before using the repository, set the user name and password for the **Shared Logon** option.

To configure the connection pool properties, do the following.

1. Open the connection pool properties by double-clicking the connection pool in the Physical layer in the Oracle BI Administration Tool dialog box for the repository. In Figure 19, the connection pool is SALESTRACK\_LOCAL.

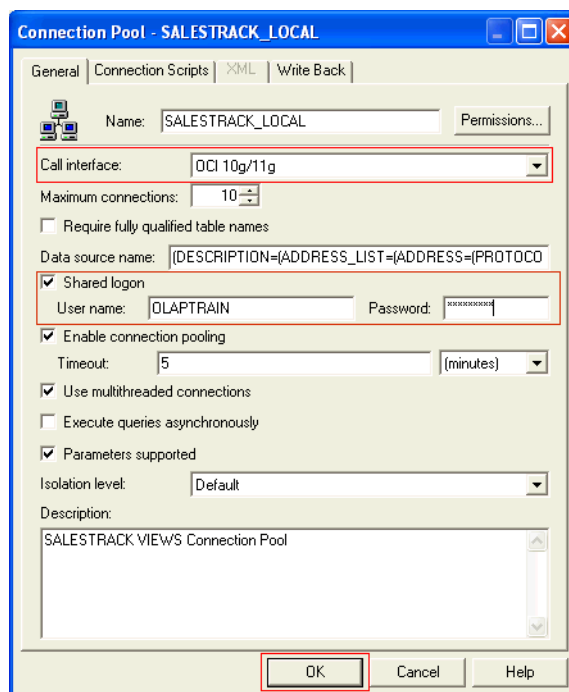
**Figure 19** *Selecting the Connection Pool*



2. In the Connection Pool dialog box, on the General tab, do the following.
  - a. From the Call Interface list, select **OCI 10g/11g**.
  - b. Select the **Shared Logon** option and enter the user name and password for your database instance.
  - c. Click **OK**.

Figure 20 shows the Connection Pool dialog box for SALESTRACK\_LOCAL.

**Figure 20** *Specifying Connection Pool Properties*



## Task 6: (Optional) Verifying the Connection

After you have configured the connection pool, you can verify the connection.

To verify the connection, do the following.

1. Right-click a view in the Physical layer.
2. Select **Update Row Count** or **View Data**.

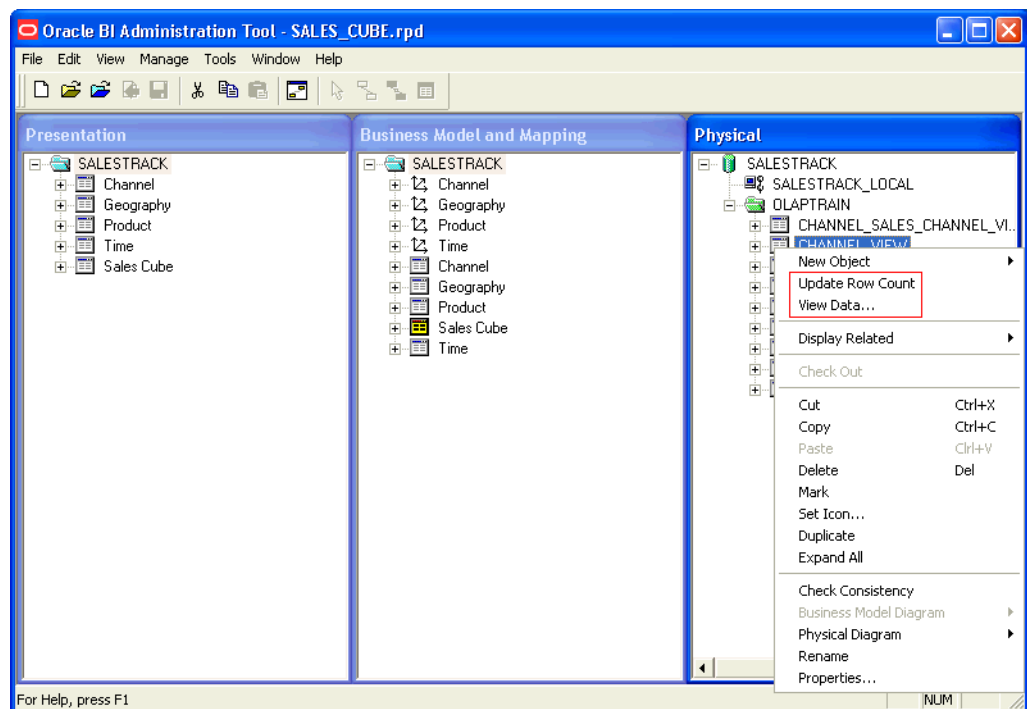
---

**Note:** For verifying the connection by updating a row count, select a physical table for a dimension. Updating the row count for the physical table for a fact table, such as SALES\_CUBE\_VIEW, which is visible in [Figure 19](#), can take more time.

---

[Figure 21](#) shows the shortcut menu for the CHANNEL\_VIEW view.

**Figure 21** Verifying the Connection



## Task 7: Saving the Repository

To save the repository, in the Oracle BI Administration Tool dialog box, on the **File**, select **Save**.

When you click **Save**, a message appears that asks if you want to check global consistency. To verify global consistency, click **Yes**. The Consistency Check Manager dialog box appears and displays a warning with the error number 39028. You can safely ignore this warning. Click **Close** to close the Consistency Manager.

## Task 8: Cleaning Up

At this point, users can query the cube. You might want to review the OBIEE metadata and make a few adjustments to accommodate your preferences. For example, you might want to review the columns that represent attributes and decide if they are useful to your users. Some attributes, such as those used for time series calculations or for sorting, might not be useful to users. Consider removing them from the Presentation Catalog.

## Documentation Accessibility

Our goal is to make Oracle products, services, and supporting documentation accessible to all users, including users that are disabled. To that end, our documentation includes features that make information available to users of assistive technology. This documentation is available in HTML format, and contains markup to facilitate access by the disabled community. Accessibility standards will continue to evolve over time, and Oracle is actively engaged with other market-leading technology vendors to address technical obstacles so that our documentation can be accessible to all of our customers. For more information, visit the Oracle Accessibility Program Web site at <http://www.oracle.com/accessibility/>.

### Accessibility of Code Examples in Documentation

Screen readers may not always correctly read the code examples in this document. The conventions for writing code require that closing braces should appear on an otherwise empty line; however, some screen readers may not always read a line of text that consists solely of a bracket or brace.

### Accessibility of Links to External Web Sites in Documentation

This documentation may contain links to Web sites of other companies or organizations that Oracle does not own or control. Oracle neither evaluates nor makes any representations regarding the accessibility of these Web sites.

### Deaf/Hard of Hearing Access to Oracle Support Services

To reach Oracle Support Services, use a telecommunications relay service (TRS) to call Oracle Support at 1.800.223.1711. An Oracle Support Services engineer will handle technical issues and provide customer support according to the Oracle service request process. Information about TRS is available at <http://www.fcc.gov/cgb/consumerfacts/trs.html>, and a list of phone numbers is available at <http://www.fcc.gov/cgb/dro/trsphonebk.html>.

---

Oracle OLAP OBIEE Plug-in for Analytic Workspace Manager User's Guide for OBIEE 10g  
E18648-01

Copyright © 2009, 2011, Oracle and/or its affiliates. All rights reserved.

This software and related documentation are provided under a license agreement containing restrictions on use and disclosure and are protected by intellectual property laws. Except as expressly permitted in your license agreement or allowed by law, you may not use, copy, reproduce, translate, broadcast, modify, license, transmit, distribute, exhibit, perform, publish, or display any part, in any form, or by any means. Reverse engineering, disassembly, or decompilation of this software, unless required by law for interoperability, is prohibited.

The information contained herein is subject to change without notice and is not warranted to be error-free. If you find any errors, please report them to us in writing.

If this software or related documentation is delivered to the U.S. Government or anyone licensing it on behalf of the U.S. Government, the following notice is applicable:

U.S. GOVERNMENT RIGHTS Programs, software, databases, and related documentation and technical data delivered to U.S. Government customers are "commercial computer software" or "commercial technical data" pursuant to the applicable Federal Acquisition Regulation and agency-specific supplemental regulations. As such, the use, duplication, disclosure, modification, and adaptation shall be subject to the restrictions and license terms set forth in the applicable Government contract, and, to the extent applicable by the terms of the Government contract, the additional rights set forth in FAR 52.227-19, Commercial Computer Software License (December 2007). Oracle USA, Inc., 500 Oracle Parkway, Redwood City, CA 94065.

This software is developed for general use in a variety of information management applications. It is not developed or intended for use in any

inherently dangerous applications, including applications which may create a risk of personal injury. If you use this software in dangerous applications, then you shall be responsible to take all appropriate fail-safe, backup, redundancy, and other measures to ensure the safe use of this software. Oracle Corporation and its affiliates disclaim any liability for any damages caused by use of this software in dangerous applications.

Oracle is a registered trademark of Oracle Corporation and/or its affiliates. Other names may be trademarks of their respective owners.

This software and documentation may provide access to or information on content, products, and services from third parties. Oracle Corporation and its affiliates are not responsible for and expressly disclaim all warranties of any kind with respect to third-party content, products, and services. Oracle Corporation and its affiliates will not be responsible for any loss, costs, or damages incurred due to your access to or use of third-party content, products, or services.

