

ORACLE TIMESTEN[®] IN-MEMORY DATABASE SUPPORT IN ORACLE SQL DEVELOPER

KEY FEATURES AND BENEFITS

- Browse, create and edit TimesTen database objects using a graphical user interface
- Automate caching of Oracle Database tables in TimesTen database
- Create, compile and run PL/SQL packages, procedures and functions
- Support concurrent connections to TimesTen and Oracle Database
- Support Oracle Database compatible data types including LOB data types
- Export and import data

Oracle SQL Developer is a graphical tool that enhances productivity and simplifies development tasks for database application developers. Using SQL Developer, TimesTen database users can browse, create, and edit database objects and PL/SQL subprograms; automate cache group operations; manage users and their privileges; manipulate and export data; execute SQL and PL/SQL statements and scripts; and view and create reports.

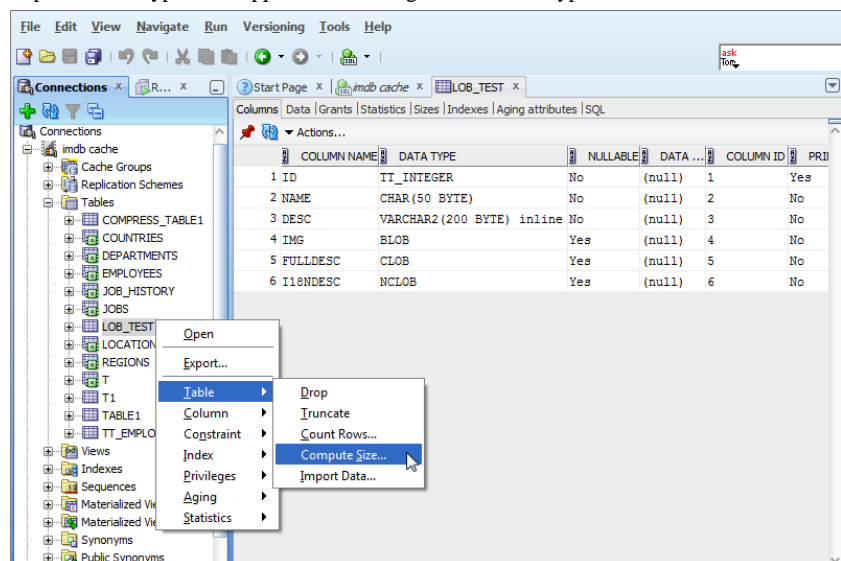
Overview

Oracle SQL Developer is a graphical tool designed for Oracle database application developers. SQL Developer integrates seamlessly with Oracle TimesTen In-Memory Database and Oracle In-Memory Database Cache.

SQL Developer provides a tree-based object browser. Navigation to database connections and objects are visually intuitive with tabbed display of details specific to each object type. From the reports navigator, users can run predefined reports or create and add their own reports. SQL Developer complements the TimesTen *ttsql* command line utility, by simplifying the development tasks using a graphical user interface.

Support for Data Objects

SQL Developer offers developers the ability to browse, create, and alter TimesTen database objects including tables, views, indexes, sequences, synonyms, materialized views, materialized view logs, PL/SQL packages, procedures and functions. Oracle Database compatible data types are supported, including the LOB data types.



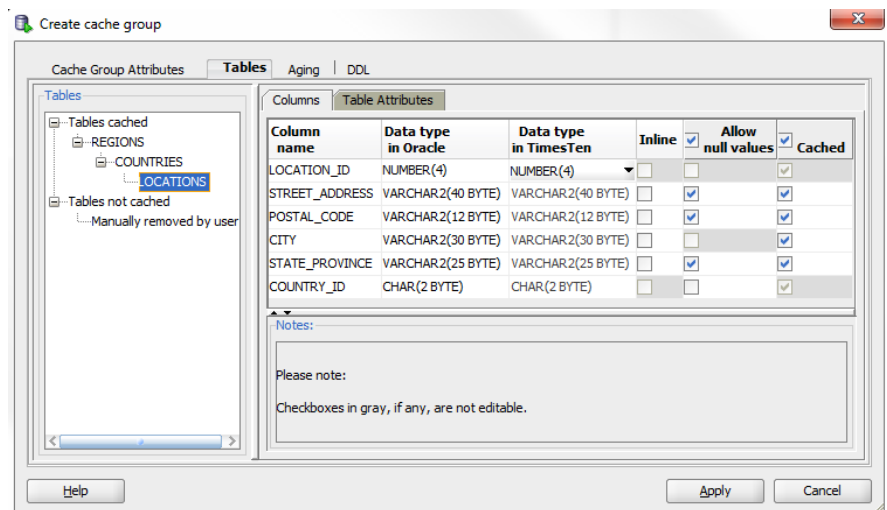
Using SQL Developer, users can connect to local or remote TimesTen databases to create and modify database objects, manage database users and their privileges, edit and execute SQL and PL/SQL programs; search and modify data stored in the TimesTen tables; view SQL definition and properties of the objects; compute memory space used by a specific table; export data from Oracle or TimesTen database tables to various formats including the TimesTen *ttBulkCp* format; and import data to TimesTen tables.

SUPPORT FOR CACHE GROUPS AND CACHE TABLES:

- Automate the creation of cache groups
- Column definitions and table relationships are automatically inherited from the Oracle Database
- Perform cache group operations
- Generate reports for cache groups

Support for Cache Groups and Cache Tables

SQL Developer automates the tasks required to configure and create TimesTen tables to cache Oracle Database tables. Cache group creation is made easy by browsing the Oracle Database schema and selecting the appropriate tables and columns to cache. The column definitions and the relationships between the cache tables are automatically inherited from the Oracle Database. Working with cache tables, and setting data aging policies and cache refresh intervals are intuitive and customizable in SQL Developer.



SQL Developer also enables the users to preload data from the Oracle Database to populate the in-memory cache tables. Support for connecting to multiple databases enables SQL Developer users to work with data in the TimesTen database and the Oracle Database concurrently, making it easy to see the effect of automatic data synchronization between the two databases.

Support for PL/SQL

SQL Developer provides a PL/SQL editor for the creation, editing and compilation of PL/SQL packages and subprograms. Users can specify different parameter values, including LOB and Ref Cursor parameters, when running or debugging a PL/SQL function or procedure.

SQL Worksheet is an editor that supports the execution of SQL and PL/SQL statements for a given database connection. Additionally, TimesTen built-in procedures and *ttIsql* commands are also supported within SQL Worksheet. For SQL tuning, table and column statistics can be updated in SQL Developer. The Explain Plan option allows users to view the execution plan for selected statements.

Platforms and Releases

SQL Developer is a Java application supporting both direct-linked (in-process) and client/server connections to the TimesTen databases. SQL Developer supports TimesTen 11g Release 1 and Release 2. SQL Developer is available on Linux and Windows platforms.

Contact Us

For more information about Oracle TimesTen In-Memory Database, visit oracle.com or call +1.800.ORACLE1 to speak to an Oracle representative.



Copyright © 2012, Oracle and/or its affiliates. All rights reserved.

This document is provided for information purposes only and the contents hereof are subject to change without notice. This document is not warranted to be error-free, nor subject to any other warranties or conditions, whether expressed orally or implied in law, including implied warranties and conditions of merchantability or fitness for a particular purpose. We specifically disclaim any liability with respect to this document and no contractual obligations are formed either directly or indirectly by this document. This document may not be reproduced or transmitted in any form or by any means, electronic or mechanical, for any purpose, without our prior written permission.

Oracle and Java are registered trademarks of Oracle and/or its affiliates. Other names may be trademarks of their respective owners.

Intel and Intel Xeon are trademarks or registered trademarks of Intel Corporation. All SPARC trademarks are used under license and are trademarks or registered trademarks of SPARC International, Inc. AMD, Opteron, the AMD logo, and the AMD Opteron logo are trademarks or registered trademarks of Advanced Micro Devices. UNIX is a registered trademark licensed through X/Open Company, Ltd. 0611

Hardware and Software, Engineered to Work Together