

# ORACLE WAREHOUSE BUILDER APPLICATION ADAPTERS: SAP R/3, EBS, PEOPLESOFT, SIEBEL

## KEY FEATURES AND BENEFITS

### ORACLE WAREHOUSE BUILDER APPLICATION ADAPTERS

- Access data and metadata from ERP and CRM applications
- Provide business view of application objects instead of physical database objects
- Apply OWB functionality for data integration and data quality to ERP and CRM sources and targets
- Integrate with E-Business Suite Concurrent Manager
- Extract from SAP R/3 with fully supported, native, performant ABAP code

*Use Oracle Application Adapters for Warehouse Builder to natively access data and metadata in ERP and CRM applications. Each adapter enables you to work with the business views of a given application rather than the complex technical structure.*

### ERP and CRM Application Adapters for Oracle Warehouse Builder

Oracle offers Warehouse Builder adapters to Oracle E-Business Suite, Oracle PeopleSoft, Oracle Siebel and SAP R/3. This permits the full use of the ETL and data quality features provided by Oracle Warehouse Builder (OWB), the OWB Enterprise ETL component of Oracle Data Integrator Enterprise Edition, and Oracle Data Profiling and Data Quality to ERP and CRM application data.

### Adapter for Oracle E-Business Suite

The Application Adapter for Oracle E-Business Suite permits business-level access to the Oracle E-Business Suite applications data as a source or a target.

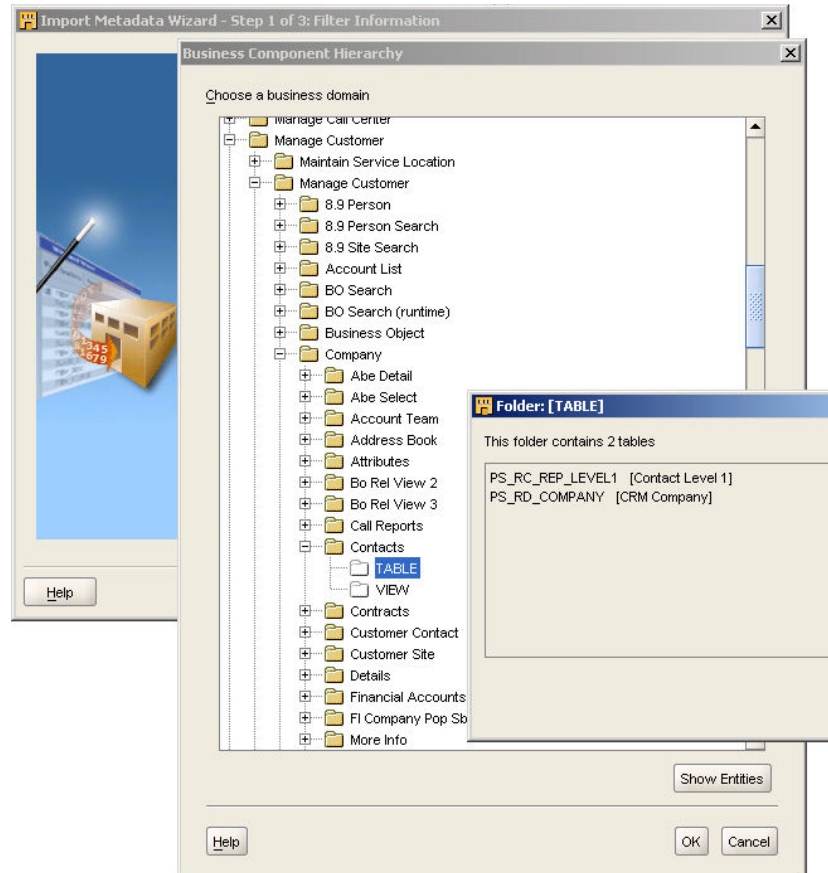
Warehouse Builder now natively understands the metadata in the eBusiness Suite and makes extracting from it much simpler and more effective. SQL-based data extraction from the underlying database ensures optimum native data extraction performance from eBusiness Suite.

The EBS Adapter also offers seamless integration with the Concurrent Manager in the EBS product suite. This functionality uniquely enables tight integration of Warehouse Builder processes in the generic EBS scheduling and job management framework.

### Adapter for Oracle PeopleSoft

The Application Adapter for PeopleSoft allows Warehouse Builder to natively understand the metadata structures of the PeopleSoft applications.

For example, within PeopleSoft CRM, we can drill down in the hierarchy to view the logical entity contacts, then we can drill into what makes up a contact.



#### Discover the actual tables making up a logical entity in PeopleSoft

Once you have imported the metadata you can use all the facilities in Warehouse Builder to integrate this data using the SQL based extraction mechanisms, which can access data hosted in Oracle databases or through transparent gateways.

#### Adapter for Oracle Siebel

The Siebel application adapter is very similar to both the EBS and the PeopleSoft adapter. For Siebel, the adapter understands the structures in the Siebel metadata and will give you the business view of these structures. Data and metadata extraction is again SQL-based.

#### Adapter for SAP R/3

The Application Adapter for SAP enables OWB to understand SAP R/3 business metadata and provide native data extraction by performant methods fully supported by SAP and in line with customers' different SAP administration policies.

Warehouse Builder connects using RFC to the application server to collect the business metadata and links that to the table metadata. Warehouse Builder understand not only transparent tables, but also pool and cluster table structures. The data integration designer sees only logical-level objects, with the physical differences between transparent, pool and cluster tables handled behind the scenes.

SAP supports the use of the proprietary ABAP language for native data manipulation, instead of direct access to underlying database objects. The

**APPLICATION ADAPTERS FOR ORACLE WAREHOUSE BUILDER**

**KEY FEATURES AND BENEFITS:**

- Access data and metadata from ERP and CRM applications
- Provide business view of application objects instead of physical database objects
- Apply OWB functionality for data integration and data quality to ERP and CRM sources and targets
- Integrate with E-Business Suite Concurrent Manager
- Extract from SAP R/3 with fully supported, native, performant ABAP code

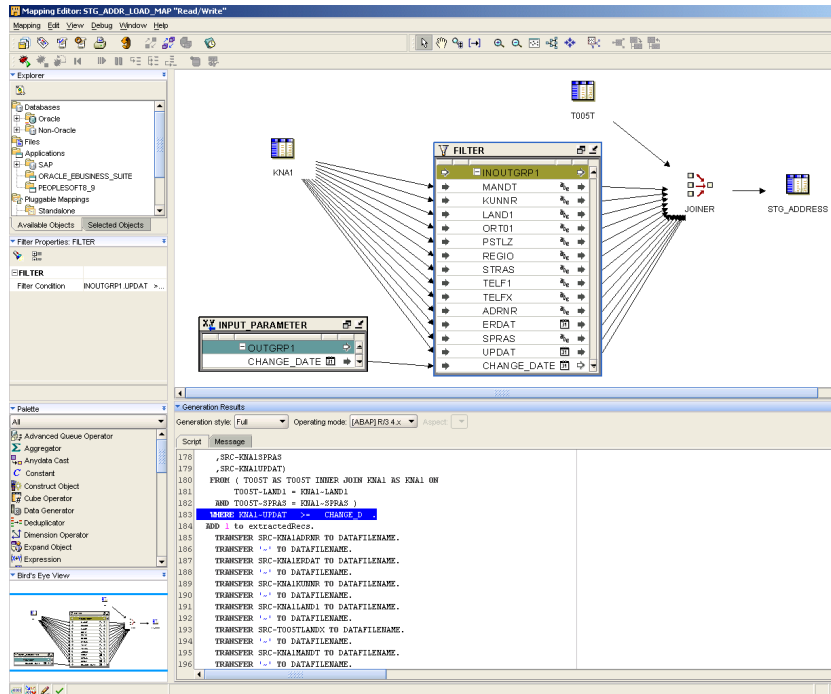
**RELATED PRODUCTS**

The following products are available from Oracle:

- Oracle Data Profiling and Quality
- Oracle Data Integrator Enterprise Edition (ODI-EE)
- Oracle Warehouse Builder
- Oracle Database
- Oracle Gateways
- Oracle E-Business Suite
- Oracle Siebel
- Oracle Peoplesoft

Application Adapter for SAP enables OWB to generate ABAP code for fully supported data extraction with native performance.

However, instead of manually writing the code, you design OWB extraction mappings. You can extract from transparent tables, pool and cluster tables as with any other data source, giving you access to the entire R/3 system with high developer productivity and performance.



**Parameterized ABAP code in Warehouse Builder**

Warehouse Builder allows SAP administrators to fully control the execution of the ABAP on the SAP system, supporting such things as transporting ABAP from development to production according to any practices chosen by the customer.

**Contact Us**

For more information about the Oracle Application Adapters, please visit [oracle.com](http://oracle.com) or call +1.800.ORACLE1 to speak to an Oracle representative.

 | Oracle is committed to developing practices and products that help protect the environment

Copyright © 2009, Oracle and/or its affiliates. All rights reserved.

This document is provided for information purposes only and the contents hereof are subject to change without notice. This document is not warranted to be error-free, nor subject to any other warranties or conditions, whether expressed orally or implied in law, including implied warranties and conditions of merchantability or fitness for a particular purpose. We specifically disclaim any liability with respect to this document and no contractual obligations are formed either directly or indirectly by this document. This document may not be reproduced or transmitted in any form or by any means, electronic or mechanical, for any purpose, without our prior written permission.

Oracle is a registered trademark of Oracle Corporation and/or its affiliates. Other names may be trademarks of their respective owners. 0109