

# Oracle Business Intelligence Beans Statement of Direction

*July 2008*

# Oracle Business Intelligence Beans Statement of Direction

## **INTRODUCTION**

Oracle Business Intelligence Beans (BI Beans) enable developers to productively build business intelligence applications that take advantage of the rich OLAP functionality in the Oracle database. BI Beans 10.1.2 ships as part of Oracle Business Intelligence 10g Standard Edition and is also available as part of Oracle Developer Suite 10g, as an add-in to Oracle JDeveloper 10g (10.1.2).

This document discusses the direction of the BI Beans product, recommendations for BI Beans customers, and support policies.

## **ORACLE BUSINESS INTELLIGENCE BEANS DIRECTION**

Since the introduction of the Oracle BI Beans, many changes have occurred in the software industry. New technologies have emerged, particularly Rich Internet Applications and Java Server Faces (JSF). Oracle has also launched many new products, including Oracle Business Intelligence Enterprise Edition, Oracle Database 11g Enterprise Edition with the OLAP Option, and Enterprise Performance Management solutions resulting from Oracle's acquisition of Hyperion. Because of these fundamental changes in the industry and in Oracle's product offering, and after considerable research and consideration, Oracle has decided that 10.1.2.2 will be the terminal release of the BI Beans.

Oracle BI Beans customers are advised to consider the new products and technologies described in the following sections:

- Oracle JDeveloper 11g and ADF Data Visualization Components
- Oracle BI Suite Standard Edition
- Oracle BI Suite Enterprise Edition

The tool ultimately selected will likely depend on the specific application requirements, and the “build vs. buy” balance. The first option, like the BI Beans, is primarily of interest to organizations that wish to develop their own specific application, while the others provide pre-built Business Intelligence products with specific functionality and prescribed look and feel.

## **Oracle JDeveloper 11g and ADF Data Visualization Components**

Oracle JDeveloper 11g and Oracle's Application Development Framework (ADF) offer a powerful and productive environment for building rich Internet applications. Oracle ADF Data Visualization components (ADF DVT) are a set of rich, interactive JSF components that provide significant capabilities for visualizing and analyzing data. ADF Data Visualization components include Graph, Gauge, Geographic Map, Pivot Table, Gantt Chart, and Hierarchy Viewer.

ADF DVT components can access data from any relational data source, web services, local data sources, and Java objects. OLAP data can be accessed using the OLAP option to Oracle Database 11g. The native SQL access to Oracle OLAP cubes exposes rich, analytic calculations and complex aggregations using very simple SQL queries. Because the cubes are exposed through relational views, creating queries that combine OLAP data with any other data managed by Oracle (e.g. spatial, multimedia, etc.) is now a standard capability. ADF DVT components can also access data in other databases and BI Servers, such as Hyperion Essbase and Oracle BI EE server, through the standard ADF data control mechanism.

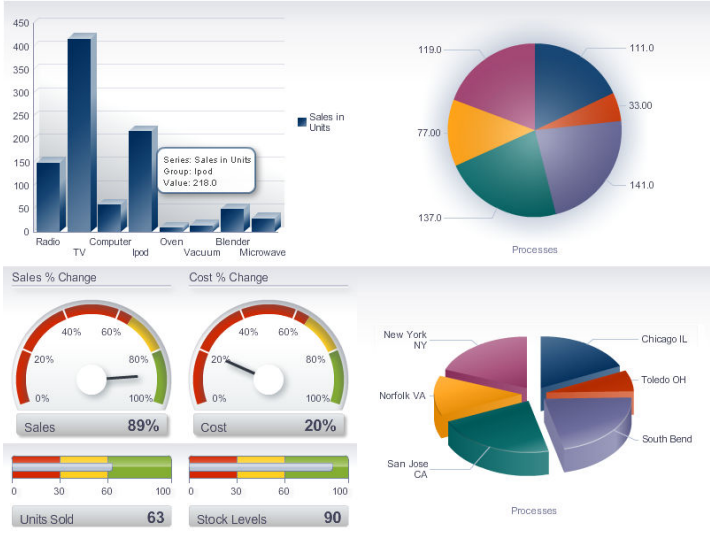
The use of ADF DVT components will provide existing BI Beans customers with the ability to merge data from multiple non-OLAP data sources within their applications. This will provide business users with the ability to quickly and easily navigate across data boundaries. The new visualization components will further enhance the user experience, especially with new animation and interactivity features and the integration of spatial analytics via geographic maps.

For more information on Oracle JDeveloper 11g and ADF Data Visualization Components, visit the JDeveloper site on Oracle Technology Network:

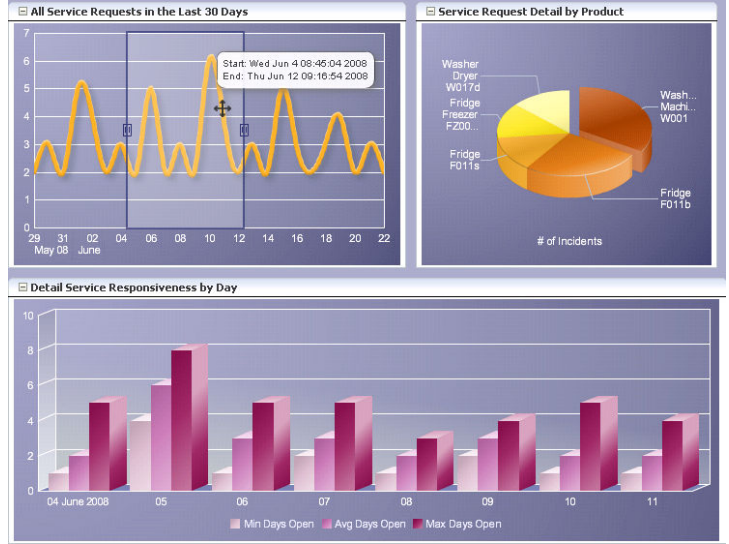
<http://www.oracle.com/technology/products/jdev/11/index.html>

# ADF Data Visualization Component Examples

## Dashboard with Graphs and Gauges



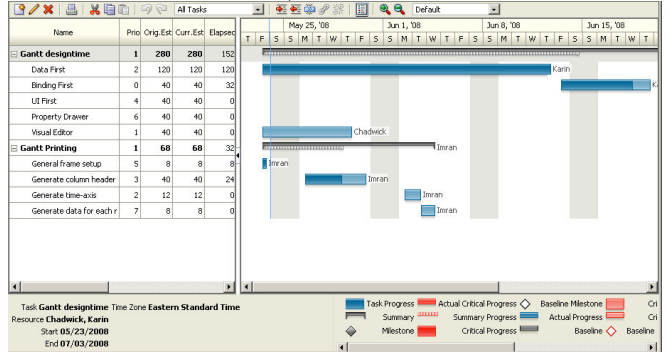
## Dashboard with Master-Detail Graphs



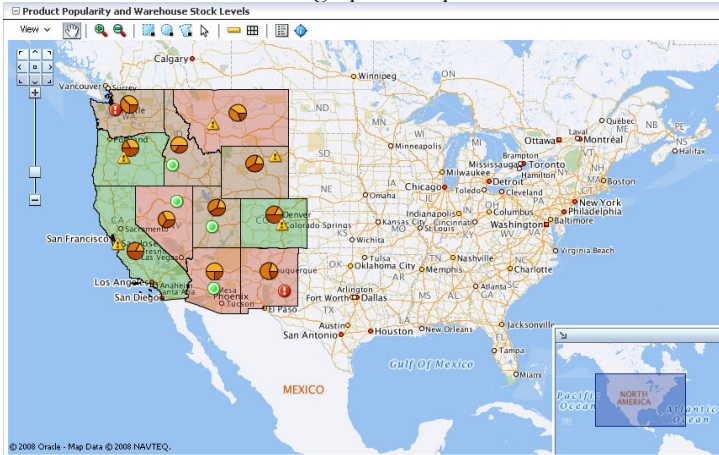
## Pivot Table

	Sales								
	Colorado	Oregon	Wyoming	Idaho	California	New Mexico	Utah	Montana	Nevada
Audio and Video									
Ipod Nano 1Gb	\$1,499.50	\$1,499.50	\$1,499.50	\$199.99	\$499.99	\$99.99	\$89.99	\$399.99	
Ipod Nano 2Gb									
Ipod Nano 4Gb									
Ipod Shuffle 1Gb									
Ipod Speakers									
Ipod Video 60Gb	\$399.99								
LCD HD Television				\$999.99					
Plasma HD Television	\$1,999.99	\$1,999.99	\$1,999.99	\$1,999.99	\$1,999.99		\$1,999.99	\$1,999.99	
Tungsten E PDA		\$199.99							
Zune 30Gb				\$225.99					
<b>Sales Total</b>	<b>\$3,899.48</b>	<b>\$3,695.48</b>	<b>\$3,499.49</b>	<b>\$1,099.94</b>	<b>\$2,725.88</b>	<b>\$99.99</b>	<b>\$489.98</b>	<b>\$1,999.99</b>	<b>\$1,999.99</b>
Cell Phones									
Bluetooth Adaptor						\$1,999.99			
Bluetooth Phone Headset	\$149.99		\$49.99	\$149.99		\$49.99		\$49.99	
Treo 650 Phone/PDA	\$299.99	\$999.97	\$599.98	\$149.97	\$599.98	\$299.99	\$1,199.96	\$299.99	\$599.98
<b>Sales Total</b>	<b>\$349.98</b>	<b>\$899.97</b>	<b>\$649.97</b>	<b>\$149.97</b>	<b>\$599.98</b>	<b>\$2,349.97</b>	<b>\$1,199.96</b>	<b>\$349.98</b>	<b>\$599.98</b>
Games									
Nintendo DS				\$1,319.98					
Nintendo Wii									
PlayStation 2 Video Game	\$599.97	\$199.99	\$299.96	\$199.96	\$799.96	\$199.99	\$199.99	\$399.99	\$599.97
Xbox 360 Video Game System		\$299.99							
<b>Sales Total</b>	<b>\$599.97</b>	<b>\$499.98</b>	<b>\$299.95</b>	<b>\$1,649.92</b>	<b>\$799.96</b>	<b>\$199.99</b>	<b>\$199.99</b>	<b>\$699.89</b>	<b>\$599.97</b>

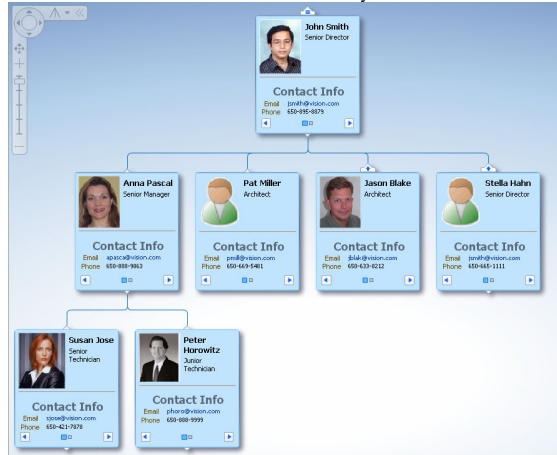
## Project Gantt Chart



## Geographic Map



## Hierarchy Viewer



## Oracle Business Intelligence Standard Edition

Oracle Business Intelligence Standard Edition will continue to be offered with Oracle Fusion Middleware 11g, and includes Oracle BI Discoverer. Discoverer 11g plans will not be affected by the direction of BI Beans. For new features that will be available in Oracle Discoverer, consult Oracle BI Discoverer Statement of Direction:

[http://www.oracle.com/technology/products/discoverer/pdf/discoverer\\_sod\\_march2008.pdf](http://www.oracle.com/technology/products/discoverer/pdf/discoverer_sod_march2008.pdf)

## Oracle Business Intelligence Enterprise Edition

The Oracle Business Intelligence Suite Enterprise Edition Plus (EE) is a comprehensive suite of enterprise BI products, delivering the full range of BI capabilities including interactive dashboards, full ad hoc analysis, proactive intelligence and alerts, enterprise and financial reporting, real-time predictive intelligence, disconnected analytics, and more. Oracle BI Suite Enterprise Edition connects to multidimensional Oracle Database OLAP cubes in Oracle Database 10g and 11g via the high performance SQL access feature, and leverages both the query performance and calculation power of the OLAP engine embedded in Oracle.

More information on Oracle BI Enterprise Edition can be found on Oracle Technology Network:

<http://www.oracle.com/technology/products/bi/enterprise-edition.html>

## ORACLE BUSINESS INTELLIGENCE BEANS SUPPORT POLICIES

Oracle's support policy for BI Beans is covered under the support policy for Oracle Fusion Middleware. For example, Oracle BI Beans 10.1.2 will be supported for the same time period that Oracle supports Oracle Application Server 10gR2 10.1.2. Listed below are the timelines for Support for Oracle Fusion Middleware (which includes Oracle BI Beans).

<b>Existing Oracle Fusion Middleware Releases</b>				
<b>Release</b>	<b>GA Date</b>	<b>Premier Support Ends</b>	<b>Extended Support Ends</b>	<b>Sustaining Support Ends</b>
9iAS R2 9.0.3	Oct 2002	Jul 2005	Not Offered	Jul 2008
10g 9.0.4	Dec 2003	Dec 2006	Dec 2008	Dec 2009
10gR2 10.1.2	Jan-Oct 2005	Dec 2009	Dec 2011	Indefinite

Different types of Oracle support are described in the following document:

<http://www.oracle.com/support/library/brochure/lifetime-support-technology.pdf>

## **CONCLUSION**

The emergence of new technologies, particularly the Rich Internet Applications, and the new offerings in the Oracle Business Intelligence product line has expanded the choices for the Oracle Business Intelligence Beans customers. The customers can now upgrade to a choice of new generation technologies that not only leverage the power of Oracle Database OLAP Option, but also can connect and use data from other, non-OLAP, systems much more easily. While Oracle will provide continuing support for BI Beans, customers are advised to consider the new products and technologies discussed in this document when planning their future strategy.



Oracle Business Intelligence Beans Statement of Direction  
July 2008

Oracle Corporation  
World Headquarters  
500 Oracle Parkway  
Redwood Shores, CA 94065  
U.S.A.

Worldwide Inquiries:  
Phone: +1.650.506.7000  
Fax: +1.650.506.7200  
[oracle.com](http://oracle.com)

Copyright © 2008, Oracle and/or its affiliates. All rights reserved.  
This document is provided for information purposes only and the contents hereof are subject to change without notice.  
This document is not warranted to be error-free, nor subject to any other warranties or conditions, whether expressed orally or implied in law, including implied warranties and conditions of merchantability or fitness for a particular purpose. We specifically disclaim any liability with respect to this document and no contractual obligations are formed either directly or indirectly by this document. This document may not be reproduced or transmitted in any form or by any means, electronic or mechanical, for any purpose, without our prior written permission. Oracle is a registered trademark of Oracle Corporation and/or its affiliates. Other names may be trademarks of their respective owners.