

An Oracle White Paper
November 2012

Oracle Hyperion Financial Close Management and Fusion Financials Integration

Executive Overview	1
Introduction	1
About Oracle Hyperion Financial Close Management.....	2
Benefits of Integrating Oracle Hyperion Financial Close Management with Oracle Fusion Financials	3
Financial Close Management Architecture	3
Task Management.....	4
Integrating Financial Close Management with Fusion Financials ...	5
Conclusion	9
Appendix	10

Executive Overview

The financial close process requires clear direction and tight orchestration across the organization to meet today's aggressive filing deadlines. Most companies manage the close process using offline spreadsheets, emails, and phone calls that can be time-consuming and error-prone. Therefore, today's finance organizations continually seek ways to increase the efficiency and timeliness of their financial close processes. But speed alone is not enough; companies are challenged with complying with changing regulatory demands while increasing transparency and reliability of data.

Oracle Hyperion Financial Close Management, a product within the Oracle Enterprise Performance Management suite, and Oracle Fusion Financials allow finance organizations to centrally monitor and manage their entire financial close process across both Oracle and non-Oracle applications. The result: Better control, increased visibility, and ultimately a faster close.

Introduction

The integration between Oracle Hyperion Financial Close Management and Oracle Fusion Financials provides a centralized approach to closing task management providing finance organizations with greater control and visibility of all period closing activities, including ledger and sub-ledger close, data loading and mapping, financial consolidation, account reconciliation, tax/treasury and internal and external financial reporting—all from a single task management application.

This white paper discusses the benefits of using an automated system for coordinating and tracking the entire close process that ultimately helps companies identify bottlenecks and areas for improvement while shaving time from the critical close and reporting process.

About Oracle Hyperion Financial Close Management

Each company has their own close procedure with varying degrees of efficiency and standardization. Additionally, the financial close can mean different things to different regions and roles. A divisional controller may think in terms of closing the sub-ledgers and general ledger while the accountant located at headquarters is focused on consolidating results from divisions, making adjustments, and producing financial statements.

Oracle Hyperion Financial Close Management centralizes the task management of the close cycle. Manually-maintained checklists are eliminated and replaced with action oriented dashboards that deliver visibility and execution capability. The following lists some of the key functionality:

- An easy to use task scheduling and management feature to define the sequence of closing tasks and assign them to employees with due dates to ensure the correct prioritization of closing tasks. Tasks can be anything that needs to be done during the close process, whether within the Oracle Fusion Applications or another system.
- Automated management of the close process that support lights-out processing, including notifications and alerts to identify bottlenecks and take corrective action.
- A pre-built, web-based dashboard to centrally monitor the overall close status and take action. Participants can view due dates, task dependencies and electronic sign-offs for greater visibility of the entire close process. If questions or issues arise about a close task, participants can easily investigate the root cause by seamlessly navigating from the task to the specific transaction or work area within Oracle Fusion Financials.
- Active calendars and task lists that allow users to launch applications to complete tasks directly from the calendars themselves.
- Reports to analyze the close process effectiveness by comparing the close performance over time.
- An Account Reconciliation Manager that automates certain reconciliation tasks and supports real-time visibility into the performance of reconciliations

- Integration with Hyperion Disclosure Management to produce 10Ks and 10Qs in multiple output formats, such as Edgar, XBRL, and iXBRL

Benefits of Integrating Oracle Hyperion Financial Close Management with Oracle Fusion Financials

By integrating Oracle Hyperion Financial Close Management and Oracle Fusion Financials, customers can easily manage their critical closing activities within Oracle Fusion Applications as well as non-Oracle Enterprise Resource Planning systems. From Oracle Hyperion Financial Close Management, users can orchestrate all of their end-user activities, schedule or run processes from Oracle Fusion Financials as well as other ERP systems and track manual processes from one easy to use business application.

Customers have greater transparency of the overall close cycle with the ability to continually improve the efficiency of their close process by analyzing close status statistics with prior periods. This holistic view enables customers to better understand their end-to-end process, highlight problem areas, and identify areas requiring improvement within the close process.

Financial Close Management Architecture

The following illustrates the Oracle Hyperion Financial Close Management architecture:

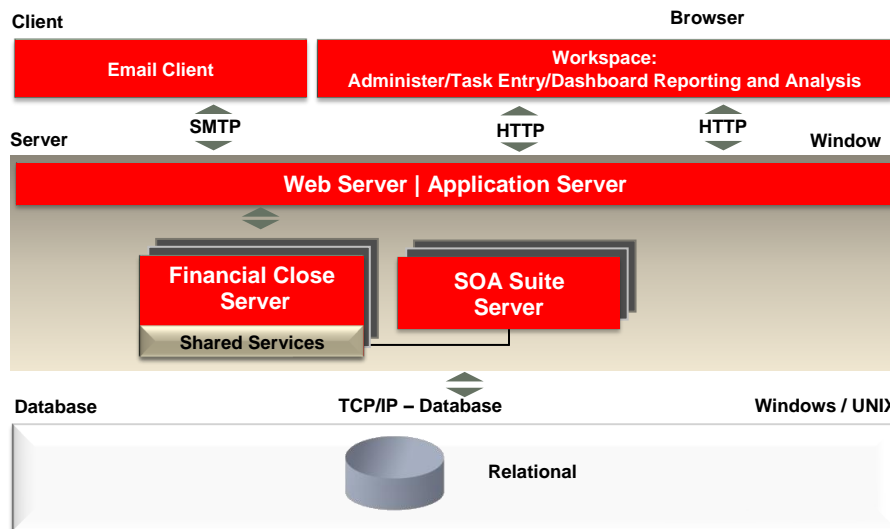


Figure 1. Financial Close Management Architecture

The following describes each component of the architecture:

Email Client: Financial Close Management notifies task owners of upcoming task assignments via email notifications. The email is generated by Workflow/Service Oriented Architecture Suite Server (BPEL i.e. Business Process Execution Language).

Workspace: Financial Close Management is a web based application that resides within the EPM Workspace. The FCM web user interface houses the dashboards, calendars and tasks for both end users and administrators.

Financial Close Server: Financial Close server leverages the latest Fusion Middleware standards for application server development.

SOA Suite Server: Financial Close Management heavily leverages Oracle's SOA Suite for all workflow related actions within the system.

Web Server – Application Server: The Web Application Service is a J2EE-based web application that provides services to most of the components in the Financial Close Management. This service interacts with the client-layer components, other middle-tier services, and the data storage components

Shared Services: Shared Services stores Financial Close Management user information and is used to authenticate users and provision their roles.

Release Compatibility:

The following product versions will be required:

- Oracle Hyperion Financial Close Management 11.1.2.2
- Oracle Fusion Financials Release 6

The following Oracle Enterprise Performance Management 11.1.2.2.000 patches are required:

1. 14244112: Patch Set Update: 11.1.2.2.300 for Oracle Hyperion Financial Close Management
2. 14569116: Patch Set Exception: 11.1.2.2.300.14569116 for Oracle Hyperion Financial Close Management

Please note that users will need to sign in to Fusion Applications again when accessing it from FCM.

Task Management

Financial Close Management tasks can be categorized into three groups: End User, System Automated and Event Monitoring.

End User Task

An end user task requires an end user to confirm that an action was performed. This type of task can require the user to provide documentation or other evidence of the completion of the task. The task can include the following:

- Detailed instructions that incorporate attached documents or reference links
- Required questions for which the user must provide documentation or evidence
- Threaded comments with attachments
- Multiple levels of review and approvals

Additionally, an end user task can incorporate a link which will bring the user directly to the appropriate Fusion page where the end user is expected to perform the task. For example, the user could be asked to run a process or report or simply review an inquiry page to ensure a correct balance exists. When a user is asked to run a process or a report, they review the process or report status or output to determine that it completed before marking the task as complete.

System Automated Task

A system automated task enables Oracle Hyperion Financial Close Management to run a process within Fusion at a specified time. Based on when the task is scheduled, Financial Close Management will request the process to be run in Fusion Financials and track whether the process has completed or failed.

Event Monitoring Task

An event monitoring task allows users to wait for an event to occur in another system before marking the task complete in Financial Close Management, i.e., waiting for a specific general ledger to close in another system.

Integrating Oracle Hyperion Financial Close Management with Oracle Fusion Financials

Customers can integrate Oracle Fusion Financials to their existing Oracle Hyperion Financial Close Management application by simply loading the integration pack XML file.

The Fusion Financials Integration Pack can be obtained by accessing My Oracle Support and downloading the patch files.

The integration XML file can be loaded into the Financial Close Application. For instructions on loading the Integration XML, please refer to the “*Managing Integration Types*” section of the *Financial Close Management Administrator’s Guide*. After the XML file has been loaded, Financial Close Management will be populated with new integration types that specify the Fusion Financials’ tasks that are supported.

The following shows the Oracle Fusion Integration types across the various Oracle Fusion Financial applications:

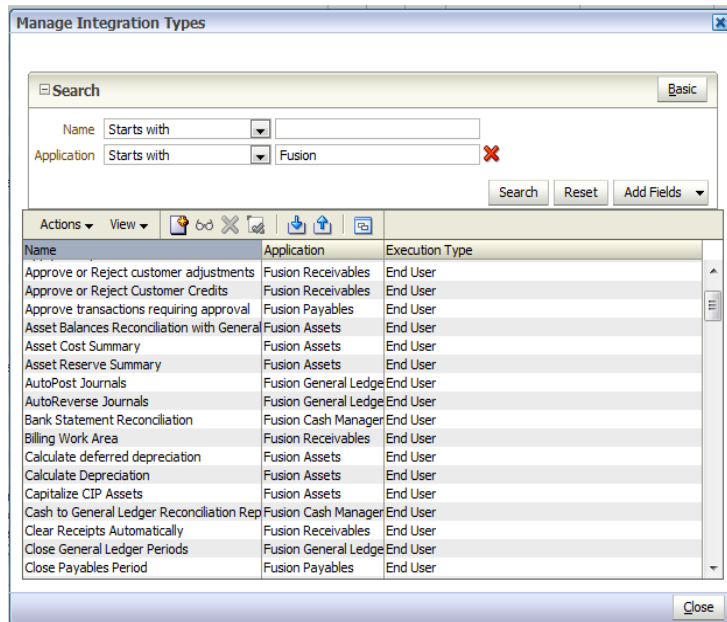


Figure 2: Fusion Integration Types

Once the integration XML is loaded for an application, new Fusion application definitions for that application will be created within Oracle Hyperion Financial Close Management. Integration XMLs are available for Oracle Fusion Payables, Oracle Fusion Receivables, Oracle Fusion General Ledger, Oracle Fusion Intercompany, Oracle Fusion Tax, Oracle Fusion Cash Management and Oracle Fusion Assets. This application definition will detail specific information related to the customer's Oracle Fusion environment. Customers can provide information related to their applications. The application definition will include the server information, security protocols, and application tokens which are required to successfully execute the various tasks.

The following shows an example of an Oracle Fusion Application definition for Oracle Fusion General Ledger:

Token Name	Value
PORT	443
PORT_BI	10217
PORT_ESS	443
PROTOCOL	https
PROTOCOL_BI	http
PROTOCOL_ESS	https
SERVER	efops-rup4st1-cdrm1-external-fin.us.oracle.com
SERVER_BI	slca960.us.oracle.com
SERVER_ESS	efops-rup4st1-cdrm1-external-fs.us.oracle.com

Figure 3: Fusion Application Definitions

The combination of the new Fusion integration types and the application definition allows Oracle Hyperion Financial Close Management to include end user product tasks and system automated tasks for Oracle Fusion Financials applications.

Note: Customers may extend the provided Fusion integration types to include other tasks they may need to perform in Oracle Fusion Applications. Please see the “*Managing Integration Types*” section within the *Oracle Hyperion Financial Close Management Administrator’s Guide* for instructions on how to add additional task integrations.

Appendix on page 10 details all of the Oracle Fusion Financials’ integration types.

Defining Fusion Financials’ Tasks within Oracle Hyperion Financial Close Management

Customers can intertwine their Oracle Fusion Financials’ closing activities with other closing tasks within Oracle Hyperion Financial Close Management. Customers can easily create end user tasks which require their users to go to specific pages or processes within Oracle Fusion Financials. For example, users can be directed to access the Journals Work Area in Fusion General Ledger to review journals. Additionally, Oracle Hyperion Financial Close Management can schedule the execution of application processes within Oracle Fusion Financials applications. For example, the Import and Calculate Daily Rates process can be scheduled to run automatically. The Fusion integration types define the library of tasks that can be managed within Oracle Hyperion Financial Close Management. From this library of tasks, customers can decide which tasks to include within their closing process.

The process for creating an Oracle Fusion Financials’ task from one of the delivered integration types follows the same basic flow as any other task within Oracle Hyperion Financial Close Management.

Oracle Fusion end user tasks will incorporate an embedded link to the specific Oracle Fusion Financials application page. End users simply need to click on the “Go To Task” link to launch the appropriate page in a new browser session. End users would then complete their task from the Fusion Financials application and then return to the appropriate Oracle Hyperion Financial Close Management task where they can update any required questions, enter additional comments, or attach supporting details of the task for approval.

The following shows a screenshot of an Oracle Fusion Financials end user task to reverse a journal:

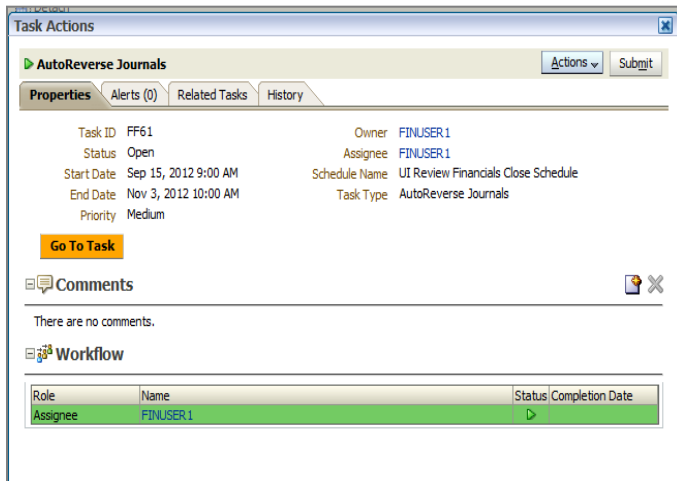


Figure 4: Oracle Fusion End User Task Action to Automatically Reverse a Journal

Currently, the only system automated integration type delivered with the integration pack XML file is Oracle Fusion General Ledger’s ‘Import and Calculate Daily Rates’ program.

The following shows a screenshot of a system automated task to Import Daily Rates into Oracle Fusion General Ledger:

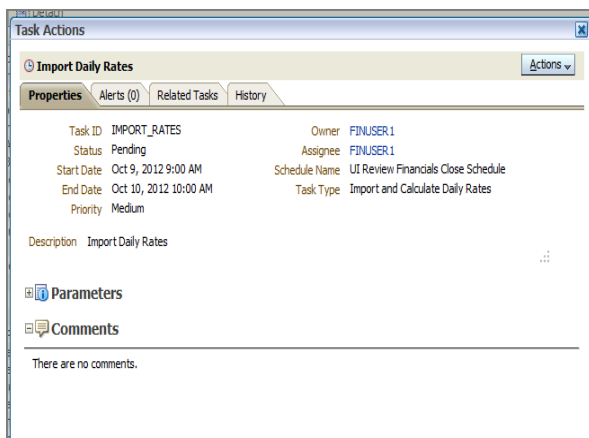


Figure 5: Oracle Fusion General Ledger System Automated Task to Import Daily Exchange Rates

Conclusion

Today's finance organizations are challenged to meet aggressive filing deadlines and changing regulatory obligations while increasing transparency and accuracy of their financial results. With limited resources, how can finance organizations deliver accurate, useful, and timely data to an increasing number of stakeholders?

Oracle Fusion Financials with Oracle Hyperion Financial Close Management provides an integrated close solution to help finance organizations proactively manage their financial close process. Customers can eliminate manual checklists and time-consuming manual tasks to improve the productivity, governance, transparency, and predictability of their close process.

Appendix

The table below lists the various integration types that are included for each Oracle Fusion Financials product:

Application: **Oracle Fusion Assets**

<u>Integration Type Name</u>	<u>Description</u>
Prepare Source Lines and Submit Post Mass Additions	Prepares source lines and post mass additions.
Manage Asset Financial Transactions	Processes asset financial transactions for the period.
Capitalize CIP Assets	Capitalizes CIP assets placed in service during the period.
Manage Asset Assignments	Processes asset transfers and unit adjustments for the period.
Retire Assets	Processes asset retirements for the period.
Reinstate Assets	Processes asset reinstatements for the period.
Manage Mass Financial Transactions	Processes pending mass financial transactions for the period.
Manage Mass Retirements	Processes pending mass retirements for the period.
Manage Mass Transfers	Processes pending mass transfers for the period.
Calculate Depreciation	Calculates and verifies depreciation amounts.
Journal Entry Reserve Ledger Report	Runs a report and verifies depreciation amounts for the specified period.
Periodic Mass Copy for Tax Books	Runs periodic mass copy from corporate book to all tax books.
Calculate Deferred Depreciation	Runs and verifies calculate deferred depreciation amounts.
Create Assets Accounting	Creates accounting and transfers journal entries to the General Ledger.
Asset Cost Summary	Runs cost summary and reconciles the assets cost balance.
Asset Reserve Summary	Runs a reserve summary and reconciles the asset

	reserve balance.
Asset Balances Reconciliation with General Ledger	Provides a generic ESS submission page to run account balances reports that are used to reconcile with the General Ledger.
Period Close Exception Report	Lists items that are not transferred to the General Ledger and enables manual corrections.

Application: **Oracle Fusion Cash Management**

<u>Integration Type Name</u>	<u>Description</u>
Bank Statement Reconciliation	Reconciles bank statement lines with general ledger and subledger transactions.
Create Accounting	Creates and transfers subledger journal entries to general ledger.
Subledger Period Close Exceptions Report	Reviews and enables corrections to all accounting events and journal.
Cash to General Ledger Reconciliation Report	Compares the closing bank balance to the closing general ledger cash.

Application: **Oracle Fusion General Ledger**

<u>Integration Type Name</u>	<u>Description</u>
Import Journals	Creates journal entries in General Ledger from imported data loaded into the interface table from subledgers and other processes.
Review Journals Dashboard	Highlights journals requiring your review.
Manage Journals	Displays journals to review or update.
AutoPost Journals	Automatically selects and posts journal batches that meet the AutoPost criteria defined.
AutoReverse Journals	Automatically reverses journals as well as posts journal reversals based on the journal reversal criteria set definition assigned to a ledger.
Generate Allocation Rules	Processes allocations in a General Ledger balances cube based on allocation rules defined and writes back the results to General Ledger.

General Ledger Trial Balance	Provides summarized actual account balances and activity by ledger, balancing segment, and account segment value.
General Ledger Average Trial Balance	Provides a listing of ending balances and average balances for selected accounts based on an as-of date you specify
General Ledger Journals Report	Runs a report which provides journal activity for a given period or range of periods, balancing segment value, currency, and range of account segment values.
General Ledger Journals Check Report	Provides information on manually entered journals prior to posting.
General Ledger Journals Day Book Report	Provides posted journal entries and journal details chronologically by accounting date for a specified range of dates, journal source, and journal category.
General Ledger Journals Batch Summary Report	Run General Ledger journals batch summary report which provides list of your posted journal batches for a particular ledger, balancing segment value, currency and date range.
General Ledger Report	Provides journal information to trace each transaction back to its original source.
General Ledger Account Analysis for Contra Account Report	Lists the accumulated balances of a range of accounts and all journal entry lines that affect that range. Provides balances by account segment and optionally by an additional segment, lists the contra account for each journal entry, and lists the subledger document number for transactions imported from subledgers.
General Ledger Average Balance Audit Account Analysis Report	Provides the detail account activity that created the aggregate balances and related average balances.
Revalue Balances	Revalues balances to reflect the impact of any changes in conversion rates when your subsidiary ledgers have account balances that are denominated in a foreign currency.
Import and Calculate Daily Rates	Validates and imports daily rates from the interface table and in the process creates and

	deletes the data in the daily rates table.
Period Close Dashboard	Displays close status, subledger outstanding transactions, translation status, and intercompany period status.
General Accounting Dashboard	Displays an account monitor, intercompany transactions portlet, journals portlet, general ledger period status, and subledger period statuses.
Financial Reporting Center Work Area	Provides retrieval of financial reports and enables monitoring accounts.
Launch Workspace for Financial Reports	Provides access to the Workspace where financial reports and folders are managed.
Translation	Runs translation.
Extract Payables to General Ledger Reconciliation Data	Extracts accounting and transactional data for reconciling Payables to the General Ledger.
Reconcile Payables to General Ledger	Enables review of a reconciliation report with accounting and transactional data for reconciling Payables to the General Ledger.
Extract Receivables to General Ledger Reconciliation Data	Extracts accounting and transactional data for reconciling Receivables to the General Ledger.
Reconcile Receivables to General Ledger	Enables review of a reconciliation report with accounting and transactional data for reconciling Receivables to the General Ledger.
Create Balance Sheet Closing Journals	Creates balance sheet closing journals to close and zero out the year-to-date balances of all balance sheet accounts.
Create Income Statement Closing Journals	Creates income statement closing journals to close out income statement year-end account balances to the retained earnings account.
Close General Ledger Periods	Handles the closing of a ledger's accounting period and cross checks the accounting period status for the subledgers.
Open General Ledger Periods	Handles the opening or reopening of a ledger's accounting period for the Oracle Fusion General Ledger application.

Manage General Ledger Accounting Periods	Manage general ledger accounting periods using the Manage Accounting Periods page.
Transfer Balances to Secondary Ledger	Copies balances from primary to secondary ledgers.
Transfer Balances Cross Ledgers	Copies balances from one ledger to another.
Create Allocation Rules	Define allocation rules launching Oracle Hyperion Calculation Manager.
General Ledger Account Analysis Report	Runs an account analysis report using Oracle Fusion Transactional Business Intelligence to view the accumulated balances of a range of accounts and all journal entry lines that affect that range. The report lists the source, category and reference information to help users trace your ledger's currency, foreign currency, or STAT transactions back to their original source. This report is a key tool available to GL users when performing account reconciliation by helping users understand the account's activities.
General Ledger General Journals Report	Runs a journals report using Oracle Fusion Transactional Business Intelligence to review information relevant to your journal entries for functional or entered currencies, and posting statuses. The details provided in this report provide information at the transactional level, grouped by individual journal entries as they were entered in the system. Using the appropriate filtration parameters, you can narrow down the range of journals that are reported on.
General Ledger Trial Balance Report	Runs a trial balance report using Oracle Fusion Transactional Business Intelligence to review summarized actual account balances and activity by ledger, balancing segment, and account segment value. You can run this report for balances and activity entered in the ledger currency, foreign currency, or STAT currency. You can also view translated balances by specifying a balance-level reporting currency.

Application: **Oracle Fusion Intercompany**

<u>Integration Type Name</u>	<u>Description</u>
Intercompany Transactions Work Area	Provides access to Intercompany transactions.
Transfer Intercompany Transactions to General Ledger	Transfers intercompany transactions to General Ledger.
Transfer Intercompany Transactions to Receivables	Transfers intercompany transactions to Receivables.
Transfer Intercompany Transactions to Payables	Transfers intercompany transactions to Payables.
Intercompany Account Details Report	Provides information about accounting details of outbound and inbound intercompany transactions. Outbound transaction accounts include provider distribution and provider receivables accounting. Inbound transaction accounts include receiver distribution and payables accounting.
Intercompany Transaction Summary Report	Provides information about intercompany transaction lines grouped by outbound and inbound transactions. The report can be customized for one or more intercompany organizations.
Manage Intercompany Period Status	Manages intercompany periods.

Application: **Oracle Fusion Payables**

<u>Integration Type Name</u>	<u>Description</u>
Import Transactions from External Systems	Imports transactions from external systems.
Import Intercompany Transactions	Imports intercompany transactions from intercompany module.
Import Expense Reports	Imports expense reports from iExpenses.
Validate Unvalidated Transactions	Validates all unvalidated transactions including invoices, prepayments, debit memos, and credit memos.
Approve Transactions Requiring Approval	Approves invoices requiring approval.
Update Matured Bills Payable Status	Updates to negotiable status bills payable with past maturity date.
Complete or Cancel Incomplete Payment Process	Manually confirms or cancels incomplete payment

Requests	process requests.
Apply Missing Conversion Rates	Updates transactions for which conversion rate information was unavailable at creation time.
Create Payables Accounting	Runs the Create Accounting Process with the Transfer to GL option enabled.
Payables Unaccounted Transactions Report	Runs a list of unaccounted transactions.
Payables Unaccounted Transactions Report with Sweep Option	Runs a process to update the accounting date of unaccounted transactions to the next period.
Period Close Exceptions Report	Runs a process to detect issues preventing period close.
Close Payables Period	Updates Payables period status to closed.
Open Next Payables Period	Updates status of next Payables period to open.
Open Items Revaluation Report	Calculates revaluation amount for open foreign currency transactions to use in creating manual adjustment in the General Ledger to meet legal requirements.
Period End Reconciliation Reports	Runs reports used to analyze period activity and create manual journals as needed.
Payables Trial Balance Report	Calculates the change in the liability account balance and lists transactions comprising the change.
Extract Payables to General Ledger Reconciliation Data	Creates the data extract for reconciling Payables to General Ledger.
Review Payables to General Ledger Reconciliation Report	Compares transaction and accounted amounts for Payables activity.
Create Mass Additions	Runs transfer to create assets.
Transfer Cost to Cost Management	Transfers cost information to cost management.

Application: **Oracle Fusion Receivables**

<u>Integration Type Name</u>	<u>Description</u>
Import AutoInvoice: Master	Imports order line information for invoice creation or invoice information from external billing programs.

Billing Work Area	Provides integration to access the Manage AutoInvoice Lines to manage the completion of invoices, creation of manual credit memos, approval of adjustments, and correction of order line and invoice information from external billing programs.
Manage Revenue Adjustments	Provides scheduling of revenue and managing of revenue adjustments.
Approve or Reject Customer Credits	Approves or rejects customer credit request applications.
Process Receipts Through Lockbox	Imports order line information for invoice creation or invoice information from external billing programs.
Receivables Balances Work Area	Provides integration to manage receipts and remittances, including creation and approval of receipts and remittance, applying receipts and on account credit memos and managing funds transfers Also use for accounting period maintenance and reconciling activities.
Create Automatic Receipt Batch	Runs Automated Receipts process.
Create Receipts Remittance Batch	Creates final receipt remittances batches.
Clear Receipts Automatically	Submits Automated Receipt Clearing and Risk Elimination process.
Create Late Charge Batch	Generates late charges.
Match Prepayments	Automatically matches prepayments to invoices imported through AutoInvoice.
Create Automatic Billing Adjustments	Automatically adjusts transactions and creates the Automated Adjustment Write-Off report.
Create Automatic Receipt Write-Offs	Automatically writes off small balances and creates the Adjustment Receipt Write-Off report.
Recognition Revenue	Creates revenue line sources independent of the Create Receivables Accounting process.
Create Receivables Accounting	Creates Receivables accounting and transfers journal entries to the General Ledger. This process includes creation of revenue line sources.

Manage Receivables Accounting Periods	Changes Receivables accounting period status.
Submit Subledger Period Close Exceptions Report	Enables review and manual corrections to items that did not transfer to the General Ledger.
Extract Reconciliation Data From Receivables to General Ledger	Creates the data extract for reconciling Receivables to General Ledger.
Receivables Aging by General Ledger Account Report	Displays customer aging and balances that can be compared to Reconciliation Report.
Run Period Close Reports	Enables analyze activity and creation of manual journals as needed.

Application: **Oracle Fusion Tax**

<u>Integration Type Name</u>	<u>Description</u>
Tax Reconciliation Report	Runs and reviews the details in the Tax Reconciliation Report. Use this information to ensure that taxable transactions have accurate tax information in preparation for tax reporting.
Tax Reconciliation by Taxable Account Report	Runs and reviews the details in the Tax Reconciliation by Taxable Account Report. Use this information to ensure that taxable transactions have accurate accounting information for your tax transactions in preparation for tax reporting.



Financial Close Management and Fusion
Financials Integration

November 2012

Authors: Rashmi Goyal, Fusion Financials
Product Management and Thomas LeFebvre,
FCM Product Management

Oracle Corporation
World Headquarters
500 Oracle Parkway
Redwood Shores, CA 94065
U.S.A.

Worldwide Inquiries:
Phone: +1.650.506.7000
Fax: +1.650.506.7200

oracle.com



Oracle is committed to developing practices and products that help protect the environment

Copyright © 2012, Oracle and/or its affiliates. All rights reserved. This document is provided for information purposes only and the contents hereof are subject to change without notice. This document is not warranted to be error-free, nor subject to any other warranties or conditions, whether expressed orally or implied in law, including implied warranties and conditions of merchantability or fitness for a particular purpose. We specifically disclaim any liability with respect to this document and no contractual obligations are formed either directly or indirectly by this document. This document may not be reproduced or transmitted in any form or by any means, electronic or mechanical, for any purpose, without our prior written permission.

Oracle and Java are registered trademarks of Oracle and/or its affiliates. Other names may be trademarks of their respective owners.

Intel and Intel Xeon are trademarks or registered trademarks of Intel Corporation. All SPARC trademarks are used under license and are trademarks or registered trademarks of SPARC International, Inc. AMD, Opteron, the AMD logo, and the AMD Opteron logo are trademarks or registered trademarks of Advanced Micro Devices. UNIX is a registered trademark of The Open Group. 0612

Hardware and Software, Engineered to Work Together