

ORACLE ENTERPRISE MANAGER 11^g MANAGEMENT CONNECTOR FOR MICROSOFT SCOM



- Bi-directional exchange of alerts between Microsoft System Center Operations Manager and Enterprise Manager
- Automatic synchronization of the alert state in Enterprise Manager with the state of alerts in Microsoft System Center Operations Manager (and vice-versa)

The Oracle Management Connector for Microsoft System Center Operations Manager (SCOM) provides another step towards the end-to-end management of data centers by providing alert integration between Oracle Enterprise Manager and SCOM. Administrators running applications on top of Oracle and the Microsoft infrastructure can now streamline the correlation of availability and performance problems across a broad set of IT components, and improve modeling and monitoring of their business services. The connector for SCOM significantly reduces the total cost of ownership of both of these tools by eliminating the need to manually compile critical information from different locations.

Bi-directional Exchange of SCOM Events and Enterprise Manager Alerts

The Oracle Management Connector for Microsoft System Center Operations Manager enables customers that manage their data centers using Microsoft System Center Operations Manager to integrate with Enterprise Manager by enabling end-to-end alert sharing. The connector allows administrators to automatically forward Enterprise Manager alerts to SCOM as shown in *figure 1*

ADDITIONAL FEATURES

- Web services-based communication
- Out-of-box mapping of Enterprise Manager alert severity to SCOM alert severity
- Ability to customize severity mapping between Enterprise Manager alerts and SCOM alerts

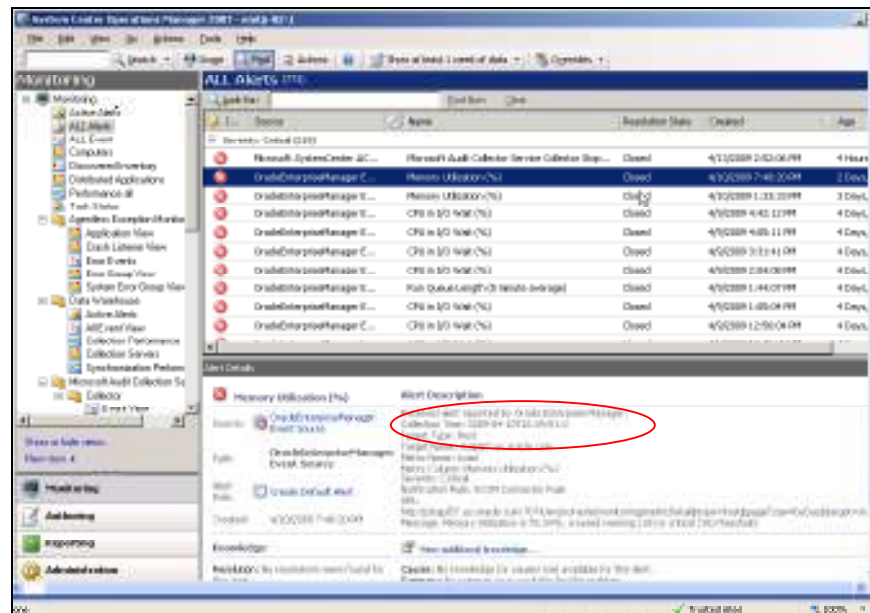


Figure 1. Shows an Enterprise Manager alert in the console of Microsoft SCOM.

The Management connector also allows you to forward SCOM alert messages to Enterprise Manager; shown in *figure 2*



Figure 2. Shows a Microsoft SCOM alert message within the Oracle Enterprise Manager console.

Additionally, the connector manages all of the alerts forwarded from SCOM and automatically updates alert severity in the Enterprise Manager console whenever changes occur to alert severity in SCOM. A similar synchronization of alert severity occurs for alerts sent from Enterprise Manager to SCOM. This ensures that the two systems are always synchronized, arming administrators with up-to-date information about their entire data center.

Lower Costs through Knowledge: Centralize All of the Monitoring Information in a Single Console

Tracking alerts is one of the most time-consuming and difficult tasks administrators face on a daily basis. The System Management Connector for Microsoft SCOM provides Oracle administrators with a consolidated view of the entire enterprise, enabling them to monitor and manage alerts originating from different components in a data center from a central location. Being able to quickly view alert details and analyze historical alerts across disparate management systems is key to ensuring diagnostics, auditing, compliance, and making solid business decisions.

System Management Connector for SCOM simplifies these tasks by automatically forwarding alerts generated by SCOM to Oracle Enterprise Manager. This information is collected daily and stored in the management repository. Having such an integrated tool reduces the total cost of ownership by eliminating the need to manually compile critical information from several different tools, thus streamlining the correlation of availability and performance problems across the entire set of IT components.

Oracle Grid Control Delivers Unparalleled Monitoring of the Oracle Grid Environment

Oracle Grid Control is simply the most complete and robust solution for managing Oracle

environments, providing the richest and most comprehensive monitoring and management for the Oracle components — from Oracle Database instances to Oracle Real Application Clusters. In addition, to support the wide variety of applications built on Oracle, Grid Control continues to expand its monitoring scope by offering management plug-ins for non-Oracle components, such as third-party databases, third-party middleware, storage, and network devices.

Finally, for customers who have invested in other management tools, System Management Connectors, such as this one for SCOM, integrate Enterprise Manager with these tools, thereby significantly reducing the total cost of ownership and increasing operational efficiencies, and Oracle customers benefit from a single integrated monitoring solution for applications built on Oracle.

Learn More

For more information about this and other Oracle Management Connectors, visit <http://www.oracle.com/technology/products/oem/extensions/index.html>

To learn more about Oracle Enterprise Manager 11^g, visit www.oracle.com/enterprise_manager

Copyright © 2010, Oracle. All rights reserved.

This document is provided for information purposes only, and the contents hereof are subject to change without notice. This document is not warranted to be error-free, nor is it subject to any other warranties or conditions, whether expressed orally or implied in law, including implied warranties and conditions of merchantability or fitness for a particular purpose. We specifically disclaim any liability with respect to this document, and no contractual obligations are formed either directly or indirectly by this document. This document may not be reproduced or transmitted in any form or by any means, electronic or mechanical, for any purpose, without our prior written permission.

Oracle, JD Edwards, and PeopleSoft are registered trademarks of Oracle Corporation and/or its affiliates. Other names may be trademarks of their respective owners.