

ORACLE WORKSHOP FOR WEBLOGIC 10g R3

KEY FEATURES AND BENEFITS

FEATURES

- Free of charge
- Oracle WebLogic Server support for Java class redefinition
- Plugs into your existing Eclipse environment
- Unique AppXRay design time dependency tracking and analysis
- Includes common tool palettes, smart editor, and variable views
- Includes sophisticated source and visual Web application user interface editors
- Tests Web service operations with whatever parameter values you choose

BENEFITS

- Offers unique design time error prevention to save hours of run time debugging
- Gives a superior awareness of all known artifacts and problems at development time
- Lets developers focus on business logic, instead of tedious infrastructure code
- Simplifies Web application and SOA component development

Oracle Workshop for WebLogic offers a free, certified-Eclipse alternative for development using technologies like Java Platform, Enterprise Edition (Java EE); Java Platform, Standard Edition (Java SE); JavaServer Faces (JSF); Web services; XML; Spring Framework; Struts/Tiles; object-relational modeling (ORM); database development; cascading style sheets (CSS); HTML; and JavaScript. Whether designing applications with “what you see is what you get” (WYSIWYG) tools and wizards or leveraging unique enhancements to open source Eclipse editing, Oracle Workshop for WebLogic helps developers spend less time on iterative development cycles, especially those based on Oracle WebLogic Server.

Introducing Oracle Workshop for WebLogic

Eclipse the conventional wisdom using the core technology voted the number one commercial Eclipse integrated development environment (IDE) in 2006 by Eclipse foundation committers. Enterprise-ready IDE capabilities in Oracle Workshop for WebLogic enable the development, assembly, build, deployment, debugging, and testing of Java components and applications implemented with Oracle WebLogic Server’s Web services, Java, Java EE, Java Web applications, Spring, Oracle Kodo, Apache OpenJPA, Hibernate, Apache Beehive, XMLBeans, and much more.

Oracle Workshop for WebLogic includes

- WYSIWYG rendering for multiple web application frameworks: JavaServer Pages (JSP), Struts/Tiles, JSF, and Apache Beehive
- JAX-RPC and JAX-WS tools for creating and testing Oracle WebLogic Server’s Web services
- DbXplorer and DbXaminer for working with databases
- ORM mapping support via Enterprise Java Bean (EJB) 3, Oracle Kodo, and Hibernate
- Mapping to Spring Data Access Objects (DAO) converter automatically generates Spring configuration and DAOs.

Premium Oracle WebLogic Server Support

Java SE 5 introduces the ability to redefine a class at runtime without dropping its class loader or abandoning existing instances. This allows containers to reload altered classes without disturbing running applications, vastly speeding up iterative development cycles. However, the usefulness of Java SE 5’s dynamic class

redefinition is limited. Oracle Workshop for WebLogic's support of Fast Swap removes this limitation in Oracle WebLogic Server, allowing the dynamic redefinition of fields and methods in classes, reducing iterative development cycles.

Oracle AppXRay

Underlying the Oracle Workshop for WebLogic experience is the unique AppXRay technology, which manages framework artifacts for code completion, consistency checking with generated classes, configuration files or annotations, pre-built error checking, and validation that reaches all the levels of your application. AppXRay provides as-you-type, compiler level awareness of much more than Java at design time. Simply right clicking on any artifact allows a filterable visualization of all design time dependencies, allowing "what-if" impact analysis and immediate notification of changes made by team members upon your checkout. The result is superior awareness of all known artifacts and early detection of problems at development time, well before the costly deployment-debug cycle. Here are just a few of the major technologies that AppXRay supports:

- HTML, CSS, JSP/JSTL, TLD definitions
- All Struts, Tiles, JSF artifacts
- All EJB3, Oracle Kodo, Hibernate artifacts
- Files, folders, Java, Java Resource Bundles, Servlet session variables
- All Apache Beehive artifacts

Major Features of Oracle Workshop for WebLogic

The following functional areas define the core components of this Eclipse and Web tools platform based development environment:

- Enhanced server plug-ins for multiple versions of Oracle WebLogic Server
- Visual Oracle WebLogic Server Web Service and XML IDE
- WYSIWYG Web and presentation tier tools for portable Java Web applications
- Object-relational mapping workbench and database tools
- Apache Beehive IDE for Java Page Flow and controls
- AppXRay support for the above components
- Spring IDE Project and Spring code generation wizards
- Core IDE features for Java SE and Java EE
- Built in Web application and Web service test client
- Upgrade tools for Workshop 8.1, 9.2 and 10 users

RELATED PRODUCTS AND SERVICES

While Oracle Workshop for WebLogic is tightly integrated with Oracle WebLogic Server, it is designed for all Oracle products that use an Eclipse-based IDE. It is not associated with any one specific Oracle product.

RELATED PRODUCTS

- Oracle Enterprise Pack for Eclipse

RELATED OPEN SOURCE

- The EclipseLink project
- JavaServer Faces Tooling
- Eclipse Data Tools Platform (DTP) Project
- Dali JPA Tools
- BPEL Tools

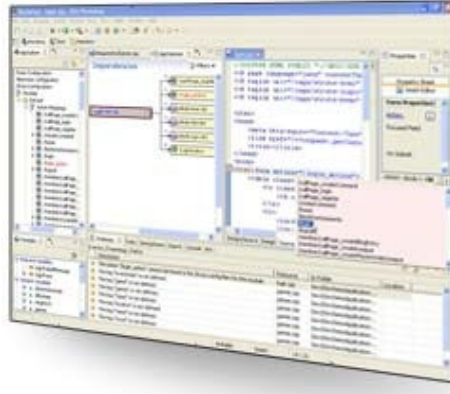


Figure 1. Oracle Workshop for WebLogic IDE screenshot

System Requirements

Oracle Workshop for WebLogic requires the following system environments:

System Requirements	
Workshop IDE Requirements	<ul style="list-style-type: none"> • Microsoft Windows XP SP2, Windows 2000, 2003 (32 bit) • Red Hat Enterprise Linux 4.0 (x86) • Recommend 2GB memory for IDE and 2GB for local server <p>Oracle WebLogic Suite defaults to a large heap that might be inappropriate for development. Changing the server start script can easily remedy the server memory usage.</p>
Operating Systems for Oracle Workshop for WebLogic and Apache Beehive Runtime	<ul style="list-style-type: none"> • Windows XP SP2, Windows 2000, 2003 • Red Hat 3, 4, and 5 • Sun Solaris 8,9,10 (SPARC) • HP-UX 11i, 11i V2 (RISC and Itanium), 11iv3 (RISC and Itanium) • AIX 5.2/5.3
Eclipse Version	<ul style="list-style-type: none"> • Eclipse 3.3.2 • Eclipse Web Tools Platform 2.0.3
Java Version	<ul style="list-style-type: none"> • JDK 1.6 and 1.5
Application Server	<ul style="list-style-type: none"> • Oracle WebLogic Server 8.1, 9.x, 10.x
<p>There are limited facets on pre-9.2 versions. Support is limited to Struts, JSF, JSP, Java Persistence API, and Spring. There is no Beehive or Oracle Workshop for WebLogic 8.1 runtime support, nor any Oracle Workshop for WebLogic Web services or EJBGen.</p>	

Contact Us

For more information about Oracle Workshop for WebLogic, please visit oracle.com or call +1.800.ORACLE1 to speak to an Oracle representative.

Copyright © 2008, Oracle and/or its affiliates. All rights reserved.

This document is provided for information purposes only, and the contents hereof are subject to change without notice. This document is not warranted to be error-free, nor is it subject to any other warranties or conditions, whether expressed orally or implied in law, including implied warranties and conditions of merchantability or fitness for a particular purpose. We specifically disclaim any liability with respect to this document, and no contractual obligations are formed either directly or indirectly by this document. This document may not be reproduced or transmitted in any form or by any means, electronic or mechanical, for any purpose, without our prior written permission.

Oracle is a registered trademark of Oracle Corporation and/or its affiliates. Other names may be trademarks of their respective owners. 0408