




Oracle BIEE 12c SampleApp v607 Virtual Appliance Quick Deployment Guide

| Versions | URLS | Image details |
|--|---|--|
| <ul style="list-style-type: none"> - Oracle Enterprise Linux 6.7 x64 - Oracle BI 12c GA 12.1.1.0 <ul style="list-style-type: none"> Visual Analyzer Mobile App Designer Oracle Mapviewer 12c MV Demo Samples Sample Application Content - Oracle Database 12.1.0.2.0 EE <ul style="list-style-type: none"> R 3.1.1, ORE 1.4.1 Oracle Apex 5.0.3 Oracle Data Mining Oracle Spatial and Graph - BigData- <i>requires separate download</i> <ul style="list-style-type: none"> Cloudera Manager/CDH 5.7.0 BigData SQL BigData Connectors Hive Thrift Server > DVD to Spark - EPM 11.1.2.4 Standalone <i>requires separate download</i> - Download the 12c BI admin tool here The 11g admin tool will not work.. | <p>All BI logons are prodney/Admin123</p> <p>http://demo.us.oracle.com:7780/va/home.jsp</p> <p>http://demo.us.oracle.com:7780/analytics</p> <p>All WLS logons are weblogic/Admin123</p> <p>http://demo.us.oracle.com:7001/console</p> <p>http://demo.us.oracle.com:7001/em</p> | <ul style="list-style-type: none"> - root/Admin123 - oracle/Admin123 - 12c db. system/Admin123 - virtual machine auto logon as user oracle - by default image is set with NAT networking <ul style="list-style-type: none"> o change to bridge networking if your VM is using DHCP - 1st Startup time for BI services is between 7-10minutes - All 12c BI related product logons are prodney/Admin123 - All WLS related logons are weblogic/Admin123 - Users that obtained the image from OTN please see the disclaimer below regarding necessary R packages <p>START HERE:</p> <ul style="list-style-type: none"> - See desktop icon 'v607 image details' for full details on this release <div style="text-align: center;">  <p>Start here image details</p> </div> |

About 12c SampleAppv607

This virtual machine is intended to showcase the functionality and capabilities of Oracle BI 12c. All standard OOB SampleApp content from v606 has been updated and enhanced for this release

NOTE: Users who download V607 from OTN. **Many examples in this release use external R packages in order to get R/ORE and BI-AA examples to work.** Click the desktop icon 'How to Install R Packages for Sampleapp' for details





SampleApp Deployment Guide Index

| | |
|--|---|
| Virtual machine download & deployment..... | 2 |
| Extraction and Import..... | 3 |
| Virtual Machine Settings | 4 |
| Starting Services overview | 5 |
| Start Here: Getting to Know SampleAppv607 and BI 12c | 6 |
| SampleApp Plug-ins..... | 7 |

Virtual machine download & deployment

1. Prepare your host system.

Minimum 8GB, 16 GB ram and SSD are recommended.

Turn on Virtual Assist features in the BIOS (usually done by default). Refer to Troubleshooting tips in Step 12 for more details.

~ 105 GB of temp disk space needed to download and install. (Includes zips files that total 24 GB, and and 24GB .ova, 58 GB OOTB deployed image) note: ova and zip files can be deleted once the import is completed

- Download and install [Free Download Manager](#) or an ftp client of your choice.
- Download and install md5sum (optional)

2. Download and install [Oracle Virtual Box](#) (4.3.x and above is supported, **5.x and above is recommended**. 5.1.2 is the current version)

3. Click [Here to open the SampleApp OTN Page](#)

- a. Sign into OTN prior to starting your download

4. Navigate to the SampleAppv607 Section

- a. You must accept the licensing terms prior to proceeding

Download files SampleAppv607p-appliance.zip .001 through .005



OBIEE 12c 12.2.1.1.0 - Sample Application v607

VirtualBox Image (includes BIEE 12c, Visual Analyzer, Advanced Analytics & Oracle Database 12c)

[Oracle BI Tech Demos YouTube Channel](#) | [Step by Step demo on how to deploy this release](#)

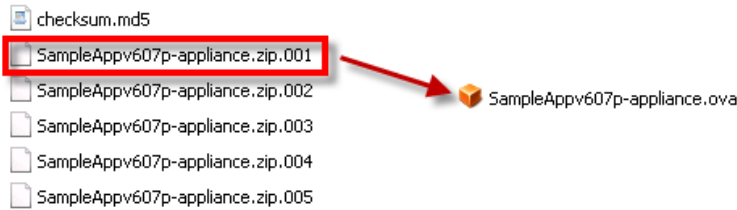
| File | Description |
|---|--|
| SampleApp 607 Image Files | Start Here: deployment guide , and whats new in SA 607 |
| <ul style="list-style-type: none"> ↓ SampleAppv607p-appliance.zip.001 ↓ SampleAppv607p-appliance.zip.002 ↓ SampleAppv607p-appliance.zip.003 ↓ SampleAppv607p-appliance.zip.004 ↓ SampleAppv607p-appliance.zip.005 ↓ SampleAppv607p-appliance.zip.005 ↓ Checksums (MD5) | <ul style="list-style-type: none"> -Download all zip files into a single directory (24GB) -unzip the .001 file -a sampleappv607-appliance folder with a .ova file will be created -open VBOX manager and import your *607.ova file |
| SampleApp v607 PSUs | Mandatory Patches to be applied to your SampleAppv607 image |
| <ul style="list-style-type: none"> ↓ v607 Visual_Analyzer Access Patch | For all users- resolves access issue when connecting to Visual Analyzer from a remote browser or Mobile HD application. |
| SampleApp v607 Plug-ins | Plug-ins available for v607 * OPTIONAL DOWNLOADS* |
| <ul style="list-style-type: none"> ↓ epm11124-package.tgz ↓ BigData on SampleApp | <p>For users who require full standalone EPM 11.1.2.4 deployment. Please refer to EPM Plug-in for SampleApp v607.pdf for details.</p> <p>Contact your local oracle sales rep for details</p> |

Extraction and Import

4a. with all zip files are downloaded into a single directory, unpack them with 7zip or zip utility of your choice. Extract your zip files (note: you only need to select zip file .001 when extracting, the rest will automatically unpack)

Linux users can run the following command as shown below.

- 7za x SampleAppv607-virtual-appliance.001
- Users with a **graphical zip utility** can right click on .zip.001 and choose extract
- (Typical extraction time will take between 5 and 10 minutes depending on your host machine)
when completed a folder called SampleAppv607i-o8112o16 will be created containing a SampleAppv607-appliance_ga.ova file



5. Start Oracle Virtual Box Manager

Click File / Import Appliance / Open appliance (you can also double click your ova file to open virtual box manager)

- Navigate to the location you downloaded the SampleAppv607p-appliance.ova file
 - Click import (typical import time is between 10 to 20 minutes)

Appliance settings

These are the virtual machines contained in the appliance and the suggested settings of the imported VirtualBox machines. You can change many of the properties shown by double-clicking on the items and disable others using the check boxes below.

| Description | Configuration |
|---|--|
| Virtual System 1 | |
| Name | SampleAppv607p-appliance |
| Product | SampleApp |
| Product-URL | http://www.oracle.com/technetwork/middleware/... |
| Vendor | Oracle |
| Vendor-URL | www.oracle.com |
| Version | 607p |
| <input checked="" type="checkbox"/> Reinitialize the MAC address of all network cards | |

ONCE YOUR VM IMPORT IS COMPLETED PROCEED TO STEP 6

Virtual Machine Settings

6. Virtual Machine Settings (Review this section fully before powering on)

By default your vm is configured with the following parameters which is ideal for an 8GB host system

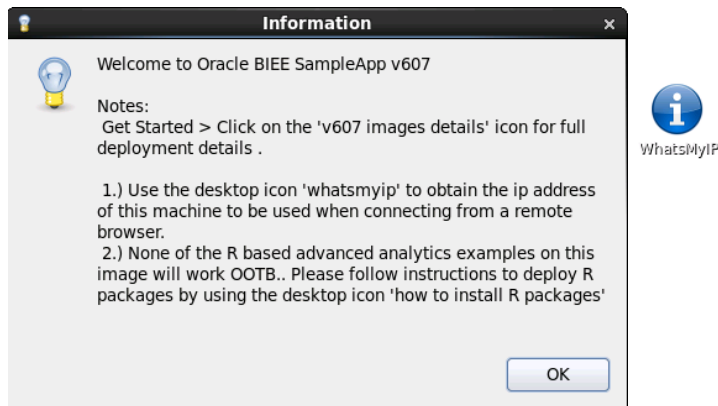
- 6.5 GB ram
- 4 processors
- NAT Network adapter
 - o By default your VM once powered on will have a IP address 10.0.2.15
 - o [See how to setup port forwarding](#) on YouTube. Port forwarding allows you to access your VM from a local web browser directly on your host machine
 - o OOTB port forwarding rules have been setup for BI, BigData and VNC



- Users with more physical host memory can allocate more memory to the virtual machine
 - o You can edit any of the VM configurations by clicking on edit/settings
- If your VM can obtain a IP addresses via DHCP change your networking to bridged

7. Start your VM it will auto login as oracle/Admin123.

NOTE: use the desktop icon 'whatsmyip' to determine the IP address of your vm , if you are using NAT networking your IP will be 10.0.2.15, if you are using bridged networking your IP address will be dynamic



★ if you are using bridge networking and your VM does not have a IP address at boot up you must either assign it one manually or power off and switch to NAT networking in order for services to start properly

8. Adjust your screen resolution to fit your host machine

- From your toolbar menu click on system/preferences/display and select a screen resolution as needed
- Your screen should auto adjust automatically

★ **VBox Tools /shared folders/guest extensions:** ensure your virtual box tools are up to date and your VBox guest extension pack is installed to ensure maximum performance and stability. For recordings on these topics as well as creating shared folders [click here](#)

PROCEED TO STEP 9 TO REVIEW THE SERVICE STARTUP PROCESS

Starting Services overview

9. Starting Services

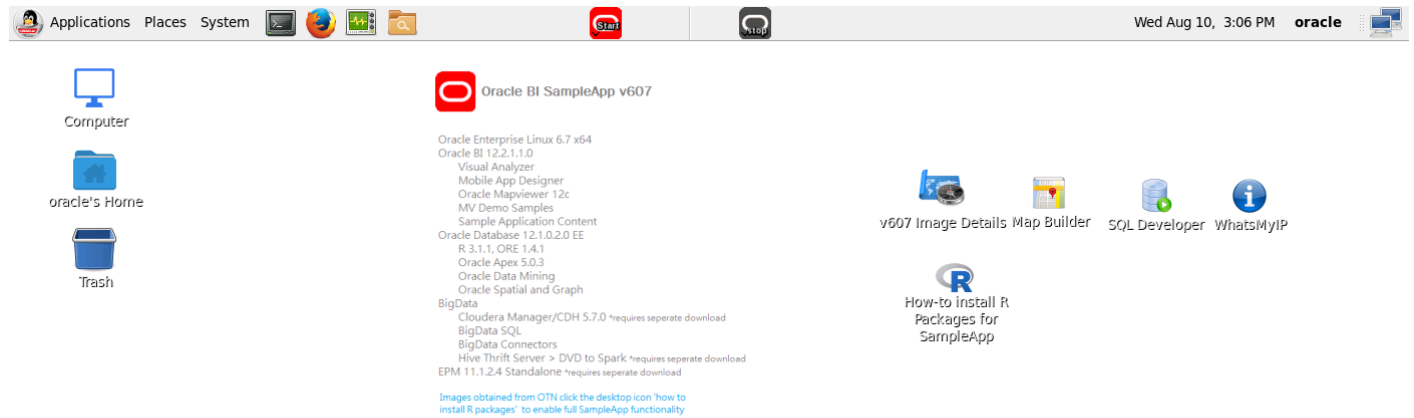
Click on the desktop icon "v607 image details" > starting services tab for instructions on starting services

- Typical 1st start time is between 7 to 10 minutes (subsequent service starts are substantially faster)
- Follow the 'recommended startup' process
 - o Note: start/stop all scripts are available
- Subsequent services startup will be faster



- Download the bi thin client here [click here](#)

SampleApp v607 Desktop



Start Here: Getting to Know SampleAppv607 and BI 12c

All Users should start with the v607 image details launch Pad for details, tips and deployment options, service control and users and URLs for this release.

NOTE: service control tab contains all port numbers used in 12c

Launchpad Overview

- o Getting to know 12c: tips and tricks, customizations, file location, BIEE Admin tool
- o VirtualBox Setup: system requirements, networking scenarios
- o Usernames & URLs: all product urls with username/passwords
- o Service Control: starting all system services including BIEE, Cloudera, database



Oracle Business Intelligence 12c Samples Application


[Getting to Know '12c'](#)
[VirtualBox Setup](#)
[Usernames & URLs](#)
[Service Control](#)

Oracle BI EE 12c SampleApp V607

[ORACLE BI TECHDEMO Youtube Channel](#) - dozens of tutorials, overviews and example viewlets

[SampleApp Virtualbox internal forum](#) - open forum to ask questions and find solutions for SampleApp virtualbox

The Sample Application (SampleApp) for Oracle Business Intelligence Suite Enterprise Edition Plus (EE) is a comprehensive collection of examples designed to demonstrate Oracle BI capabilities and design best practices.

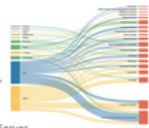
Launchpad Overview

- o (updated for 607)Getting to know 12c: tips and tricks, customizations, file location, BIEE Admin tool
- o VirtualBox Setup: system requirements, networking scenarios
- o (updated for 607)Usernames & URLs: all product urls with username/passwords
- o (updated for 607)Service Control: starting all system services including BIEE, Cloudera, database

Release Highlights

SampleApp V607 : Installed Software

- Oracle Enterprise Linux 6.7 x64
- OBIEE 12.2.1.1
 (includes 12.2.1.1 RPL, Oracle MapViewer 13c, MV Demo Samples)
- Oracle Database 12.1.0.2.0 EE (PuggableDB),
 OVDI11 patches, APD 5.6.3 & OVDI 3.0.3, ODM, Oracle Spatial
- ORE 1.4.1 & R-3.1.1
- CDH 5.7, Oracle BDSQL, Spark & Hive Thrift Server
- Utils : Start scripts, MapBuilder 12c, SQLDev 4.1.3



SampleApp V607 : What's new

- A. BI 12c Platform new features :**
- DV projects examples leveraging latest DV capabilities :
 external data sources, mashups, Ad Junctions, Direct Database requests, Whirling, Story Telling (Dashboards), Attribute Functions.
 - Dashboards Sub-Pages tab examples, BIEE server Spark connection
- B. Additional Integration & Customizations :**
- Integrating JET visuals in Answers reports,
 - 3D interactive R visuals in Answers with plotly
 - Additional custom R scripts in DV/OBIEE
 Sentiment, Term Freq, Time Series Decompose, Market Basket

Sample - new data time related to 2017, 2014, 2015



SampleApp V607 : New DV Sourcing Features



SampleApp V607 : New DV Sourcing Features



SampleApp Plug-ins

In addition to the robust OOB functionality SampleApp offers additional plugins are available to enhance your SampleApp image.

Current offerings:

- EPM 11.1.2.4- download directly from [OTN](#)
 - o Standalone full EPM deployment within in a separate MW home
- Cloudera 5.7.4 CDH- contact your local oracle sales rep for details
 - o Cloudera manager and all CDH components
 - o Supports the 9.6o dashboard sets with examples of BI and Cloudera integration
 - o Includes hive thrift server for Oracle Data Visualization Desktop connectivity