

# ORACLE ENTERPRISE PACK FOR ECLIPSE

## KEY FEATURES AND BENEFITS

### FEATURES

- Free of charge
- Plugs into your existing Eclipse environment
- Supports multiple Eclipse versions 3.4 and 3.3
- Unique features for WebLogic Server users
- 100% pure SWT implementation

### BENEFITS

- Leverage Eclipse expertise
- Increased productivity for Oracle WebLogic Server customers
- No reconfiguration or re-training on a entire IDE stack, just plug-in to your existing one

*The Oracle Enterprise Pack for Eclipse is planned to provide a set of certified plug-ins, enabling a development environment designed to support Java EE standards where Eclipse is the preferred Integrated Development Environment (IDE) within an organization. As part of Oracle Fusion Middleware, this initial release of Oracle Enterprise Pack for Eclipse will support enhanced development, debugging and deployment for Oracle WebLogic Server.*

### Introducing Oracle Enterprise Pack for Eclipse (OEPE)

In this initial release, OEPE provides Oracle WebLogic Server plug-ins for both Eclipse 3.4 and 3.3. It's shorter release cycles will strive to match the pace of the underlying open source, and continue to extend the standard, base Eclipse and Web Tools platforms with Oracle – specific technologies, like Databases, Java, Java EE and Web Services.

### Premium Oracle WebLogic Server Support

Java SE 5 introduces the ability to redefine a class at runtime without dropping its class loader or abandoning existing instances. This allows containers to reload altered classes without disturbing running applications, vastly speeding up iterative development cycles. However, the usefulness of Java SE 5's dynamic class redefinition is limited. OEPE's support of Fast Swap removes this limitation in Oracle WebLogic Server, allowing the dynamic redefinition of fields and methods in classes, reducing iterative development cycles.

### Features of Oracle Enterprise Pack for Eclipse

In addition to capabilities provided by Eclipse and Web tools platform, OEPE provides the following features:

- Fastswap - Java Class Redefinition support for WebLogic Server
- Develop, debug and deploy to Oracle WebLogic Server 10gR3, and multiple previous versions
- Remote deployment and debugging, JSP Debugging for WebLogic Server 9.x and higher
- Virtual EAR technology that improves WebLogic Server deployment performance for large applications
- Leverage WebLogic Shared J2EE Libraries to make packaging of Enterprise Java Applications easier and faster

**RELATED PRODUCTS AND SERVICES**

While Oracle Enterprise Pack for Eclipse is tightly integrated with Oracle WebLogic Server, it can be used by any Oracle products that uses an Eclipse-based IDE.

**RELATED PRODUCTS**

- Oracle Workshop for WebLogic

**RELATED OPEN SOURCE**

- The EclipseLink project
- JavaServer Faces Tooling
- Eclipse Data Tools Platform (DTP) Project
- Dali JPA Tools
- BPEL Tools
- Facelets Tools Incubator Project

- Deployment descriptor editors for weblogic.xml and weblogic-application.xml
- Oracle Database Plug-in for Eclipse Data Tools Platform, Facelets Tech Preview

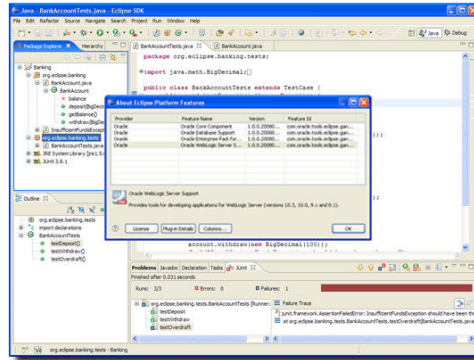


Figure 1. Oracle Enterprise Pack for Eclipse screenshot

**System Requirements**

Oracle Enterprise Pack for Eclipse requires the following system specifications:

System Requirements	
IDE Requirements	<ul style="list-style-type: none"> <li>• Windows Vista, XP</li> <li>• Suse Linux 11.0</li> <li>• Oracle Enterprise Linux 5</li> <li>• Recommend 2GB memory for IDE and 2GB if running server locally</li> <li>• Note: WebLogic Server defaults to a large heap, which may be inappropriate for development. Changing the server start script can easily remedy the server memory usage.</li> </ul>
Eclipse Version	<ul style="list-style-type: none"> <li>• Eclipse 3.4</li> <li>• Eclipse 3.3</li> </ul>
Java Version	<ul style="list-style-type: none"> <li>• JDK 1.6 and 1.5</li> </ul>
Application Server	<ul style="list-style-type: none"> <li>• Oracle WebLogic Server 8.1, 9.x, 10.x</li> </ul>
<p>There are limited facets on pre-9.2 versions. Support is limited to Struts, JSF, JSP, Java Persistence API, and Spring. There is no Beehive or WebLogic Workshop 8.1 runtime support, nor any Oracle Workshop for WebLogic Web services or EJBGen.</p>	

**Contact Us**

For more information about Oracle Workshop for WebLogic, please visit [oracle.com](http://oracle.com) or call +1.800.ORACLE1 to speak to an Oracle representative.

Copyright © 2008, Oracle and/or its affiliates. All rights reserved.

This document is provided for information purposes only, and the contents hereof are subject to change without notice. This document is not warranted to be error-free, nor is it subject to any other warranties or conditions, whether expressed orally or implied in law, including implied warranties and conditions of merchantability or fitness for a particular purpose. We specifically disclaim any liability with respect to this document, and no contractual obligations are formed either directly or indirectly by this document. This document may not be reproduced or transmitted in any form or by any means, electronic or mechanical, for any purpose, without our prior written permission. Oracle is a registered trademark of Oracle Corporation and/or its affiliates. Other names may be trademarks of their respective owners. 0408