

## **Technical Note**

### *HOW TO INSTALL AND CONFIGURE ORACLE DRIVE WITH ORACLE PORTAL*

November 2005

## INTRODUCTION

This Technical Note describes how to install and configure Oracle Drive for use in an Oracle Application Server Portal (Oracle Portal) environment. Oracle Drive is a powerful WebDAV client. It maps the Oracle Portal Repository as a drive and allows you to perform desktop authoring and publishing, as well as portal specific metadata attribution, directly from the Windows desktop.

You can use Oracle Drive with Oracle Portal (9.0.4.2) or later. No additional configuration is required on the Oracle Application Server middle-tier, infrastructure or Metadata Repository. Note that Oracle Drive does not work with earlier versions of Oracle Portal, including version 9.0.4 (Oracle Application Server 10g Base Release).

## SETTING UP ORACLE DRIVE

### INSTALLATION

The Oracle Drive software must be installed on each Windows client that wants to take advantage of these capabilities. The installation is very easy and only requires you to choose an installation directory for the Oracle Drive software. Simply follow the installation instructions provided by the Oracle Installer and reboot the Windows machine once the installation is complete. After restarting the computer you can see a new icon in the Windows system tray.



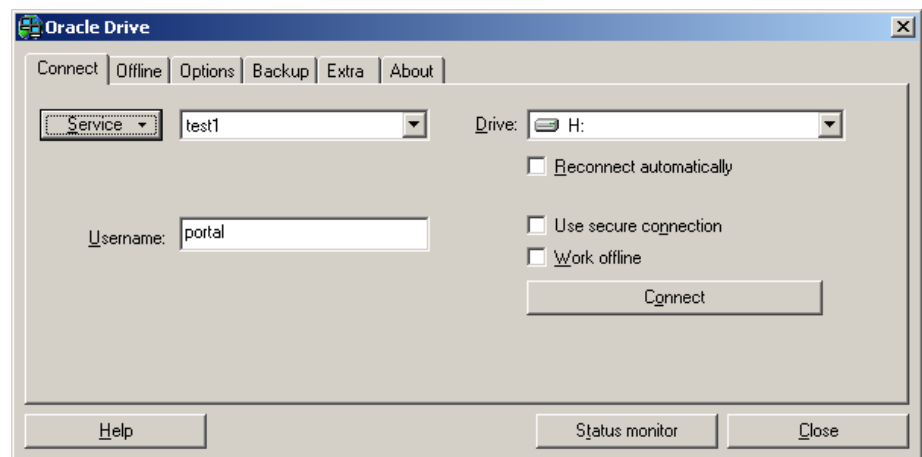
Next, you must configure Oracle Drive to work with Oracle Portal.

### CONFIGURATION

Each Oracle Drive installation must be configured to connect to the Oracle Portal Repository. Follow the steps described below:

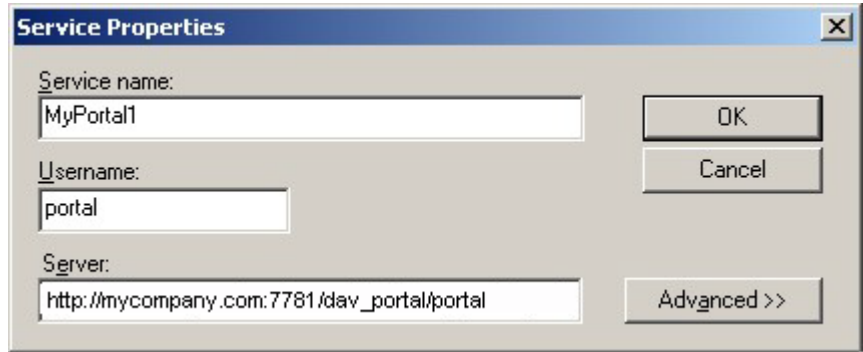
1. Open the Oracle Drive dialog box by double-clicking the icon in the Windows system tray.

Figure 1: Oracle Drive Dialog



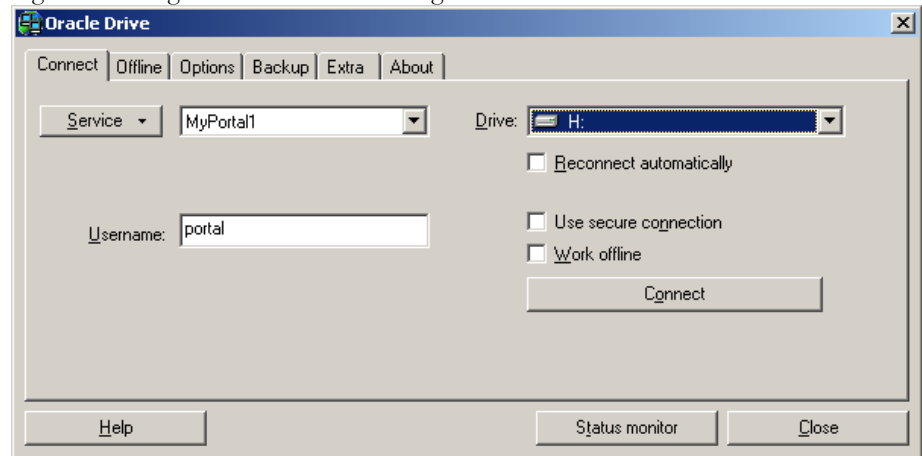
2. To create a new Service, choose *Service -> New Service*.

Figure 2: Service Properties Dialog



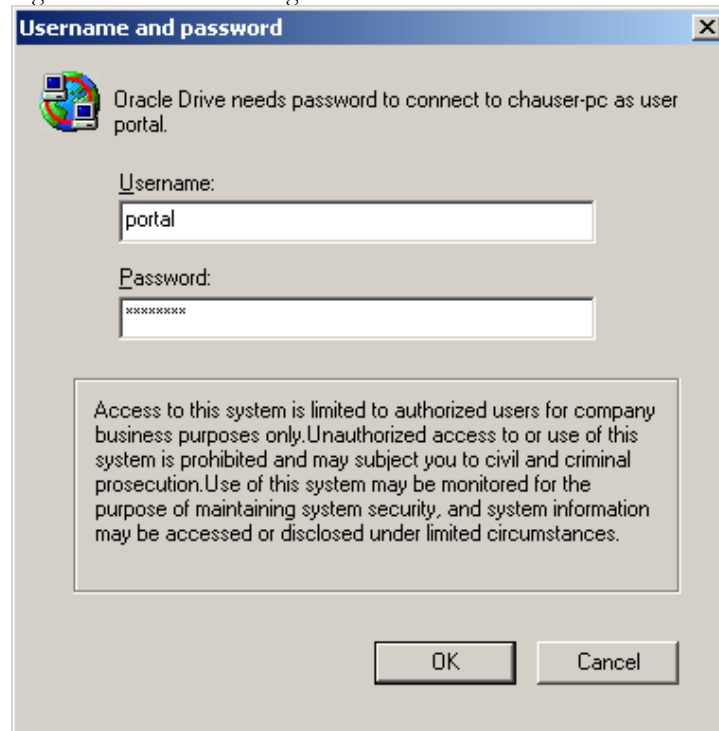
3. Specify the following properties:  
**Service name:** Name for your WebDAV connection  
**Username:** Oracle Portal Single Sign-On (SSO) user  
**Server:** <MIDTIER\_HOST:PORT>/dav\_portal/portal/  
 For example: http://mycompany.com:7781/dav\_portal/portal
4. Click *OK*.
5. Choose a drive letter to map to the new Oracle Drive connection.

Figure 3: Configured Oracle Drive Dialog



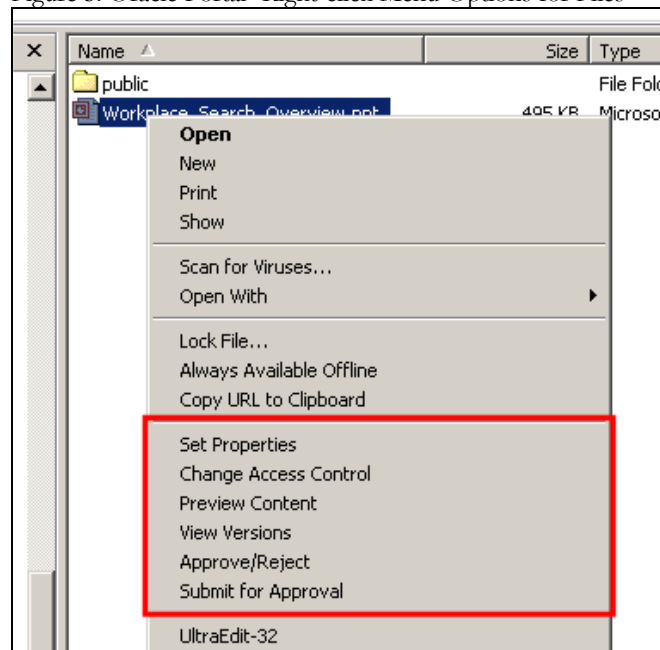
6. Click *Connect*. Enter your Oracle Portal SSO username and password to authenticate and establish the connection.

Figure 4: Connection dialog



7. The Oracle Drive WebDAV connection is assigned to the drive letter selected in Step 5 and is available in Windows Explorer. If you right-click any file or folder under the mapped Oracle Drive, extra file/folder menu options specific to Oracle Portal are now available.

Figure 5: Oracle Portal- Right-click Menu Options for Files



### ORACLE PORTAL RIGHT-CLICK MENU OPTIONS

The Oracle Portal menu options that are available when you right-click any file or folder under a mapped Oracle Drive are described below. When you choose one of these

menu options the appropriate Oracle Portal screen is displayed in a Browser window. Note that you are required to enter your Portal SSO username and password the first time an Oracle Portal screen opens in the Browser. However, you will not need to re-authenticate when subsequent Oracle Portal screens are displayed. The following menus are available in Oracle Portal 10.1.4 and might be different in an earlier release.

#### File Menu Options (Items)

**Set Properties:** Displays the Edit Item screen.

**Change Access Control:** Displays Access settings for the item, if item level security is enabled.

**Preview Content:** Displays actual item content.

**View Versions:** Displays the version history of the item, if versioning is enabled.

**Approve/Reject:** Allows an administrator to Approve or Reject Content that is pending.

**Submit for Approval:** Allows a user with the 'Manage Items with Approval' privilege to submit an item that is in Draft mode.

#### Folder Menu Options (Pages)

**Set Properties:** Displays the Page Properties screen.

**Change Access Control:** Displays the Access tab in the Page Properties screen.

**View Page:** Displays actual page content.

## SUMMARY

This Technical Note provides all the information you need to install and configure the Oracle Drive WebDAV Client for use with Oracle Portal. This functionality enables users to be much more productive in desktop authoring and publishing.

## RELATED MATERIAL

[Oracle Drive Demonstration Viewlet](#)



How to Install and Configure Oracle Drive with Oracle Portal

Author: Christian Hauser

November 2005

Oracle Corporation  
World Headquarters  
500 Oracle Parkway  
Redwood Shores, CA 94065  
U.S.A.

Worldwide Inquiries:  
Phone: +1.650.506.7000  
Fax: +1.650.506.7200  
[www.oracle.com](http://www.oracle.com)

Copyright © 2005, Oracle. All rights reserved.

This document is provided for information purposes only and the contents hereof are subject to change without notice. This document is not warranted to be error-free, nor subject to any other warranties or conditions, whether expressed orally or implied in law, including implied warranties and conditions of merchantability or fitness for a particular purpose. We specifically disclaim any liability with respect to this document and no contractual obligations are formed either directly or indirectly by this document. This document may not be reproduced or transmitted in any form or by any means, electronic or mechanical, for any purpose, without our prior written permission. Oracle is a registered trademark of Oracle Corporation and/or its affiliates. Other names may be trademarks of their respective owners.