

ORACLE ENTERPRISE MANAGER MANAGEMENT PACK FOR WEBCENTER SUITE



COMPOSITE AND PORTAL APPLICATION MANAGEMENT FOR WEBCENTER SUITE

KEY FEATURES

- Correlates WebCenter application services such as ADF Task Flows to the underlying code components
- Low overhead for 24/7 production monitoring
- No coding (or source code) needed
- Easy-to-read map of the WebCenter Suite model-driven relationship views
- Automatic APM configuration determines what to monitor
- Auto-correlation ties every metric to high-end portal, transaction, and business functions
- Dynamic, auto-customized service-level dashboard allows any IT staff to manage performance

KEY BENEFITS

- Reduce the time and effort required to set up APM.
- Reduce errors associated with manual APM processes.
- Dramatically improve ability to keep up with environmental changes.
- Significantly reduce total cost of ownership.

The use of Enterprise 2.0 composite applications such as portals is on the rise, but effectively managing these environments remains a challenge, causing unexpected downtime and productivity bottlenecks for most organizations that are difficult to troubleshoot because of the inherent abstract layers of composite applications. Leveraging a sophisticated modeling engine, the Oracle Enterprise Management Pack for WebCenter Suite, ensures your mission-critical portal and Java EE applications perform at peak levels. By correlating portal application services to the underlying code components and automating application performance management, Oracle Enterprise Management Pack for WebCenter Suite is the only solution that fills the IT visibility gap at the abstract portal layer.

Improve Application Infrastructure Visibility for Portals

Enterprises are taking the next step in application integration by using portal servers to create federated portal applications, aggregated user interfaces, and shared application resources. These applications help deliver benefits such as application aggregation, content consolidation, and user interface consistency which help reduce costs, increase customer satisfaction and provide the ability to respond more quickly to new market demands.

Unfortunately, all composite applications have a significant visibility gap when managing the context of the application services the portal comprises. Monitoring this application layer requires special visibility and expertise. Management Pack for WebCenter Suite is the only solution that can see inside the portal to help optimize application performance.



Figure 1: Management Pack for WebCenter Suite dashboard for WebCenter applications

providing visibility into ADF Task Flows, JSF Pages, and Portlets as well as underlying Java EE components

Automate Management Setup and Configuration

There are always two key issues confronting any monitoring project:

- What things should I measure?
- What do those measurements mean?

Oracle's modeling technology allows Oracle Enterprise Manager Management Pack for WebCenter Suite to answer these questions automatically, enabling consistent, fast application performance management across all applications. The system delivers a customized out-of-the-box performance management platform that empowers the entire IT staff to monitor, manage, and triage application performance.

Reduce Problem Resolution Time with Model-Driven Diagnostics

Whether standard or federated, portal applications present a unique challenge when problems occur. User interface aggregation creates a visibility gap between what the user requests (the standard URL, for example) and how the application executes the transaction. As the only tool with visibility of the "functional logic" within a portal application, Oracle Enterprise Manager Management Pack for WebCenter Suite provides user-friendly root cause analysis from the URL down to the actual piece of problematic Java code while keeping an eye on the full transactional context of the measurement.

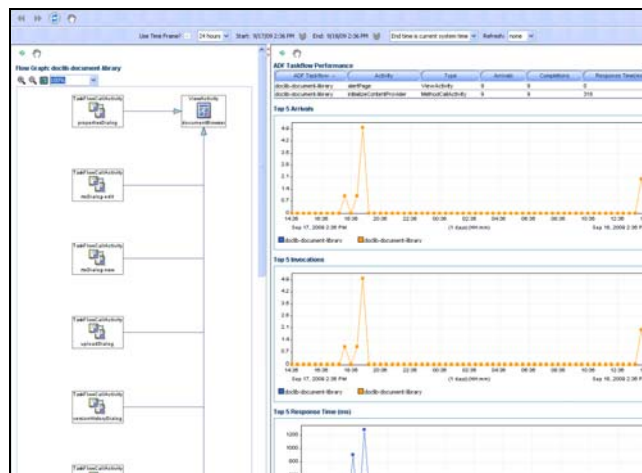


Figure 2: WebCenter Services ADF Task Flow performance analysis using Management Pack for WebCenter Suite

Improve Problem Solving One Request at a Time

Transaction maps and models allow users to quickly isolate issues that result in problems affecting the application services driving the business. Oracle Enterprise Manager Management Pack for WebCenter Suite takes problem solving and service-level improvements to the next level with the ability to track individual requests

RELATED PRODUCTS AND SERVICES

Oracle Enterprise Manager Management Pack for WebCenter Suite helps customers quickly gain control of their WebLogic Portal application performance by providing instant, comprehensive visibility, automatic management configuration, and application change detection.

RELATED PRODUCTS

- Oracle Enterprise Manager Management Pack for WebLogic Server
- Oracle Enterprise Manager Management Pack Plus for SOA
- Oracle Diagnostics Pack For Oracle Middleware

through the application infrastructure. IT staff can see exactly what service-level outliers did inside the application and the individual request traces are automatically tied to the transaction models. This allows users to leverage the view that suits them best.

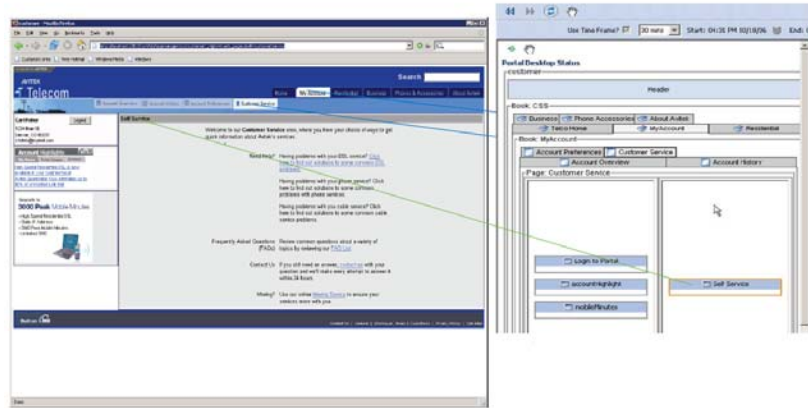


Figure 3: Management Pack for WebCenter Suite models the actual WebLogic Portal Desktop metadata including the books, pages, portlets, and other underlying components down to the Java EE component level.

Conclusion

Oracle Enterprise Manager Management Pack for WebCenter Suite is the easiest to install, easiest to maintain, and most cost-effective solution for optimizing the performance of enterprise portal applications built on top of Oracle WebCenter Suite. Complete with rich features in application availability and performance monitoring, it is the first and only solution that addresses the business and technical needs of performance management.

Contact Us

For more information about Oracle Enterprise Manager Management Pack for WebCenter Suite, please visit oracle.com or call +1.800.ORACLE1 to speak to an Oracle representative.



Copyright © 2009, Oracle and/or its affiliates. All rights reserved.

This document is provided for information purposes only and the contents hereof are subject to change without notice. This document is not warranted to be error-free, nor subject to any other warranties or conditions, whether expressed orally or implied in law, including implied warranties and conditions of merchantability or fitness for a particular purpose. We specifically disclaim any liability with respect to this document and no contractual obligations are formed either directly or indirectly by this document. This document may not be reproduced or transmitted in any form or by any means, electronic or mechanical, for any purpose, without our prior written permission.

Oracle is a registered trademark of Oracle Corporation and/or its affiliates. Other names may be trademarks of their respective owners. 0109