

Oracle Warehouse Builder integration with CA Unicenter AutoSys Job Management

INTRODUCTION

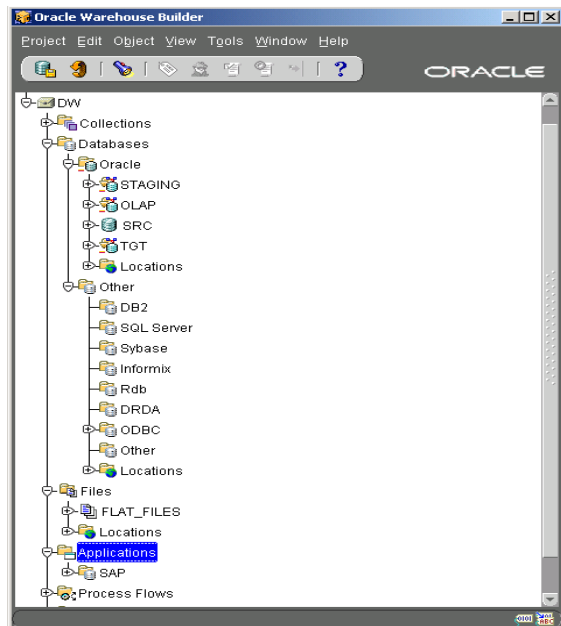
Technology and business have become inseparable. Since the business is constantly changing in response to market pressures, IT supporting systems must respond and grow as needed. Business Intelligence and Job Management tools support business processes by providing data consolidation and enterprise scheduling. Oracle Warehouse Builder is an enterprise level Business Intelligence Design tool and CA's Unicenter AutoSys Job Management (Unicenter AutoSys JM) is a leader in enterprise-wide scheduling tool for the heterogeneous enterprise.

Oracle and Computer Associates announce a collaboration that will result in process flow definitions, designed in Warehouse Builder, to be seamlessly deployable into Unicenter AutoSys JM. Both products communicate using industry standard XML Process Definition Language (XPDL¹).

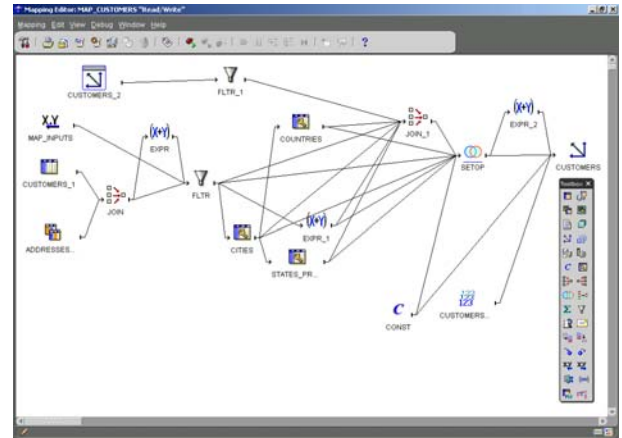
ORACLE WAREHOUSE BUILDER

Design

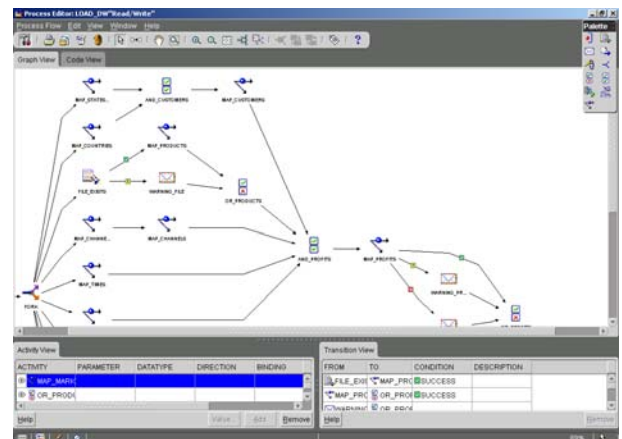
Business Intelligence (BI) is the key to control costs and improve revenue. Warehouse Builder enables end-to-end design of a BI application. Starting from disparate sources you capture the definitions.



Next you design a dimensional or relational target structure and graphically design the ETL processes to load the target structure.



Separate ETL processes typically have dependencies: staging loads before the dimensional target is loaded, dimensions are loaded before the cubes are loaded. Warehouse Builder provides a graphical process flow editor to enable the design of these. The editor supports most commonly used activities² for a Business Intelligence application. Besides, external activities as well as any transformations (PL/SQL procedures and functions), are supported.

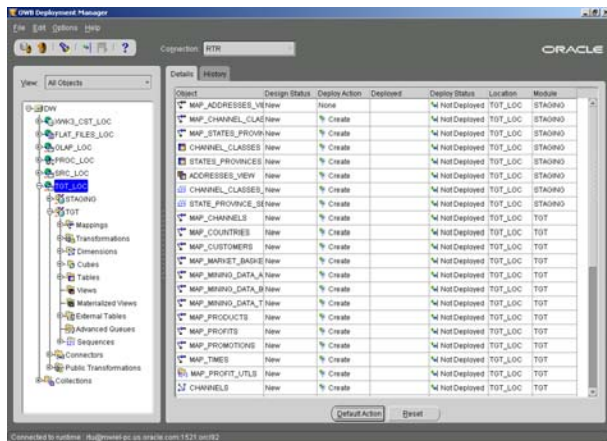


Deployment

Design metadata from Warehouse Builder is the basis for code generation and deployment. The deployment manager provides the unified interface to all different deployment targets, irrespective of whether these are for example the Oracle database, a flat file system or Unicenter AutoSys JM.

¹ For more information about XPDL, refer to <http://www.wfmc.org>

² The term activity is defined by the Workflow Management Consortium (WFMC) and refers to a process step.



In an all Oracle environment Oracle Workflow is the target for process flow deployment. The adapter based deployment platform now also enables direct deployment to Unicenter AutoSys JM. The result is a reference architecture for a proven, integrated solution between Oracle Warehouse Builder and Unicenter AutoSys JM.

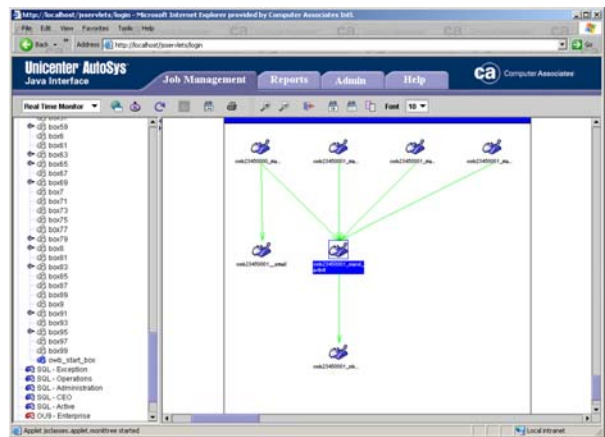
UNICENTER AUTOSYS JOB MANAGEMENT

Computer Associates' Unicenter AutoSys JM is an integrated solution that coordinates and executes job schedules across a heterogeneous enterprise. Functions, such as administration, job submission and monitoring, can be centralized or distributed depending on the need within your organization. An intuitive web interface simplifies the potentially complex nature of enterprise scheduling. Whether you run on a Windows or a Unix platform, using databases from Oracle, Sybase or Microsoft, Unicenter AutoSys JM can manage your environment.

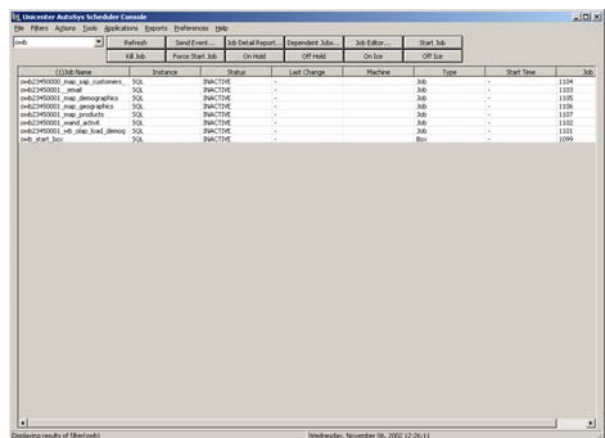
Warehouse Builder process flows may consist of Unix shell scripts, Windows .bat files, PL/SQL stored procedures, or applications such as email and FTP.

The integration with Warehouse Builder will directly populate the process flows into Unicenter AutoSys JM jobs.

Once deployed, Unicenter AutoSys JM is the management console from which you manage the job schedules.



Having run the job, process flow progress information can be audited from the Unicenter AutoSys JM interface.



Because of the tight integration with the Warehouse Builder runtime environment the full auditing details of the jobs are still available in Warehouse Builder's web-based runtime audit browser.

