

ORACLE WEBLOGIC SERVER 10g R3 ENTERPRISE EDITION

KEY FEATURES

FEATURES

- High performance clustering and failover capabilities
- Low-overhead Java application monitoring and diagnostics
- Flexible download and installation options
- FastSwap iterative development
- Web 2.0 and RIA support
- High fidelity administration console
- Java EE 5/Java SE 6 support
- Oracle TopLink ORM persistence
- Oracle Application Development Framework
- Ingrained support for the Spring Framework
- Oracle JDeveloper IDE
- Eclipse-based tooling with Oracle Workshop for WebLogic
- Latest Web services standards JAX-WS and JAXB
- High performance JMS messaging system
- SAML 2.0 security
- Industry-leading performance

BENEFITS

- Rock-solid availability and uptime for applications and services
- Improved ability to preempt issues due to better monitoring and management of production applications
- Ability to obtain and install only what's needed
- Faster more productive develop-deploy-debug cycle
- Superior end-user client usability
- Highly efficient, fast server administration
- Simplified development of new applications and services
- Tooling choice expands available developer talent pool

Oracle WebLogic Server Enterprise Edition is the application server of choice when applications and services need high availability and superior diagnostic capabilities. It includes all the features and benefits of Oracle WebLogic Server Standard Edition plus proven clustering technology, multi-domain management, and diagnostic tooling. Clustering provides seamless migration and failover from one server to another, ensuring continual operation for your business-critical applications and services. Deep diagnostics and memory leak detection help prevent application disruption altogether by getting to the root cause of issues.

Product Overview

When your business cannot afford to have an application offline or when service becomes unexpectedly inaccessible, Oracle WebLogic Server Enterprise Edition rises to the occasion by providing key high availability and diagnostics capabilities. Adding highly tuned server clustering to Oracle WebLogic Server Standard Edition, the enterprise edition helps enable IT infrastructure that can accommodate planned and unplanned downtime. To ensure superior application performance, it also provides unparalleled deep diagnostics capabilities for production systems with no overhead to form a comprehensive monitoring and management system.

High Availability

Enterprise IT needs to be able to respond to both planned and unplanned downtime. Oracle WebLogic Server Enterprise Edition offers functionality to support both cases. Dynamic configuration changes, production application redeployment, and rolling upgrades are just a few capabilities that help keep running systems available even while making changes. Sophisticated clustering software that is accessible and can be managed efficiently is another hallmark of Oracle WebLogic Server Enterprise Edition. Clustering instances of Oracle WebLogic Server together enables many capabilities that kick in when a server abruptly goes offline. Features such as whole-server migration, automatic service migration, and the transaction recovery service are invoked when server state degenerates. Oracle WebLogic Server Enterprise Edition also supports failover across metropolitan area networks (MANs) and wide area networks (WANs).

Deep Diagnostics

The included Oracle Diagnostics Pack for Oracle Middleware improves availability and performance while providing in-depth diagnostics for Java applications with

- Web services interoperability with .Net
- A manageable runtime platform
- Maximum system efficiency and scale
- Upgradability from prior releases

low overhead. It enables administrators to proactively monitor application performance and learn about the performance problems ahead of time. Administrators can diagnose the root cause of performance problems such as application crashing and application hanging in production environments, which may impact businesses severely.



Figure 1. JRockit Mission Control dashboard provides deep insight into running applications on production servers with negligible overhead.

Simplified Development

Tooling and Framework Choice

Developers can choose the completeness of Oracle JDeveloper that spans Oracle Fusion Middleware or Eclipse-based tooling with Oracle Workshop for WebLogic. Developers can also take advantage of several popular development frameworks including Oracle Application Development Framework, Spring, Struts and others. Choice also reflects Oracle’s support for both open source development offerings and commercial code.

FastSwap Functionality

It’s not enough to simply offer more tooling options. Oracle WebLogic Server Enterprise Edition includes FastSwap capabilities that dramatically reduce the development-deploy-debug cycle. The time saving comes from the ability to update Java class files and have those changes take immediate effect on the application under development—without having to restart the application or server. It’s a radical reduction in time normally lost to restarts and application state loss.

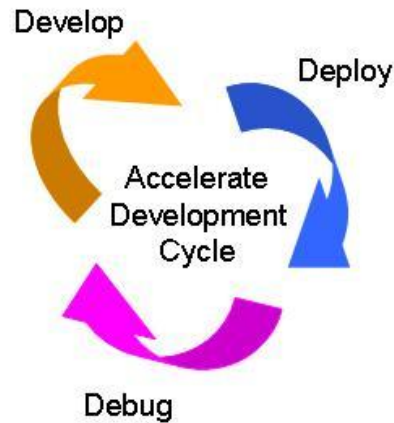


Figure 2. FastSwap reduces development time and increases efficiency

HTTP Publish-Subscribe Engine for Web 2.0 and Rich Internet Applications

Many customers are deploying rich internet applications (RIAs) that marry the best of web applications and traditional desktop applications. Asynchronous JavaScript and XML (AJAX) is a popular technology that helps enable client applications with high degrees of usability. On the server end, Oracle WebLogic Server Enterprise Edition brings to market a new HTTP publish-subscribe server that can communicate with RIAs asynchronously. This enables up-to-date information to be pushed from the server to the client without the user needing to refresh their browser or web application. For example, streaming market data could be lifted from the high performance Java Message Service (JMS) messaging queue on the server and sent to a client web application with the resulting user experience being similar to that of a desktop application—but without the desktop application installation and updating concerns.

Web Services

When developing services in support of Service Oriented Architecture (SOA), Oracle WebLogic Server Enterprise Edition includes critical, high performance web services standards that are key to service enablement. In addition, Oracle diligently works with other vendors to ensure web services interoperability.

Key Technologies and Standards

And finally Oracle WebLogic Server Enterprise Edition supports the current Java EE 5 specification including Enterprise JavaBeans (EJB) 3.0 and the associated Java Persistence API (JPA). These new standards help developers write sophisticated enterprise applications and services more easily.

| Simplified Development Features and Benefits | |
|--|--|
| Java EE 5/EJB 3.0 | Features latest specification with focus on ease of development, representing a major overhaul of EJB technology |
| FastSwap | Reduces time spent during the develop-deploy-debug cycle for more efficient application development |
| Oracle TopLink / JPA | Provides new, streamlined method of storing important objects to data stores, available to all Java applications and a core component of EJB 3.0 |
| Oracle JDeveloper and Oracle Application Development Framework | Leverages the premier development tool and framework for Oracle Fusion Middleware |
| Web Services standards and interoperability | Fundamental technologies in support of SOA. Interoperable with .Net |
| Open Source choice | Provides developers with options, including Struts, the Spring framework, and other open-source projects, to meet their needs |
| Eclipse-based tooling via Oracle Workshop for WebLogic | Leverages Eclipse and the Web Tools Platform project to offer a complete set of technologies and plug-ins for building services and applications |

Enhanced Operational Efficiency in Support of Uptime

Simplifying new application and service development is only half the equation. You must be able to deploy and run them in a highly reliable and manageable environment. Human errors made by operations staff when making changes to running servers can cause significant damage to customer loyalty and revenue.

To address this challenge, Oracle WebLogic Server Enterprise Edition continues its relentless pursuit of uptime. Its administration console includes features such as a change center to help prevent inadvertent errors, as well as an ability to auto-record domain configuration changes in the console for playback with a single command via Oracle WebLogic Server's scripting tool. This enables you to cut down potential errors when working on repetitive procedures.

Operations teams will also appreciate improvements to the Oracle WebLogic Server Enterprise Edition's diagnostic framework when displaying diagnostic data and support for important management standards such as Simple Network Management Protocol (SNMP). Lastly, Oracle WebLogic Server Enterprise Edition supports APIs from prior releases (unless previously deprecated) and offers automated domain upgrading via its domain configuration tool. It is also interoperable with previous releases.

| Uptime Support Features and Benefits | |
|--|---|
| Administration console change center | Prevents human error when making configuration changes by providing lock-and-edit capability in the Oracle WebLogic Server Enterprise Edition administration console change center. Includes roll back if any server is unable to accept the proposed update |
| Auto-record administration console configuration changes | Saves time and reduces human error by allowing auto-recording of repetitive domain configuration changes made in the Oracle WebLogic Server Enterprise Edition administration console and replay using a single command via Oracle WebLogic Server's scripting tool |
| Application upgrade from prior releases | Continues to provide leadership in the area of application upgrade, supporting application upgrades from previous versions and interoperability across these product versions |

RELATED PRODUCTS AND BENEFITS

Oracle WebLogic Server Enterprise Edition provides a rock-solid foundation for enterprise applications and SOA services.

RELATED PRODUCTS:

- Oracle WebLogic Suite
- Oracle Enterprise Manager Diagnostics Pack
- All components included within Oracle WebLogic Server Standard Edition:
 - Oracle TopLink
 - Oracle Application Development Framework
 - Oracle JDeveloper
 - Oracle WorkShop for WebLogic

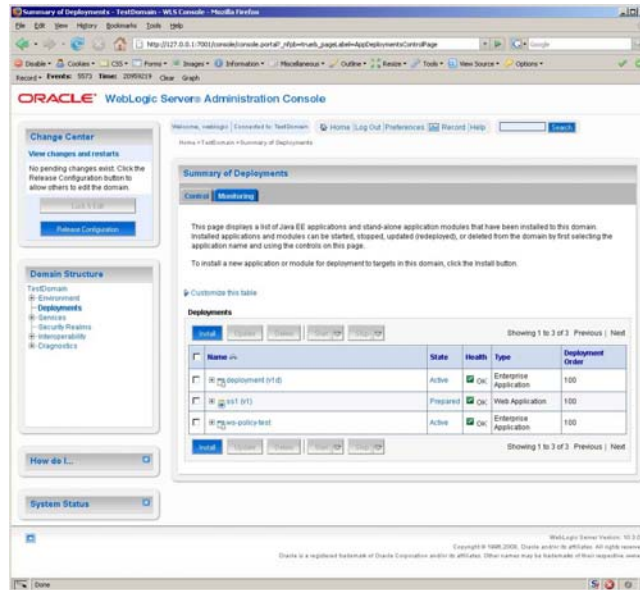


Figure 3. Oracle WebLogic Server Administration Console with updated look and feel and dramatic performance boost.

System Requirements

Note that Oracle WebLogic Server Enterprise Edition offers comprehensive application connectivity to various databases using Java Database Connectivity (JDBC) drivers.

| SYSTEM REQUIREMENTS | |
|--|---|
| Operating systems (32-bit and 64-bit supported) | <ul style="list-style-type: none"> • AIX • HP-UX • Linux • Solaris • Windows |
| Databases | <ul style="list-style-type: none"> • Oracle (and Oracle Real Application Clusters) • IBM DB2 • Microsoft SQL Server • MySQL • Sybase |
| Java | <ul style="list-style-type: none"> • Java Platform, Standard Edition 6 • Java Platform, Enterprise Edition 5 |

Contact Us

For more information about Oracle WebLogic Server Enterprise Edition, please visit oracle.com or call +1.800.ORACLE1 to speak to an Oracle representative.

Copyright © 2008, Oracle and/or its affiliates. All rights reserved.

This document is provided for information purposes only, and the contents hereof are subject to change without notice. This document is not warranted to be error-free, nor is it subject to any other warranties or conditions, whether expressed orally or implied in law, including implied warranties and conditions of merchantability or fitness for a particular purpose. We specifically disclaim any liability with respect to this document, and no contractual obligations are formed either directly or indirectly by this document. This document may not be reproduced or transmitted in any form or by any means, electronic or mechanical, for any purpose, without our prior written permission.

Oracle is a registered trademark of Oracle Corporation and/or its affiliates. Other names may be trademarks of their respective owners. 0408