

JD Edwards EnterpriseOne Server Manager



**JD EDWARDS
ENTERPRISEONE**

KEY FEATURES

• Lifecycle Management

- Consolidated view of all JD Edwards EnterpriseOne servers
- Standardize system administration processes
- Simplify key administration activities
- Improve system compliance

• Configuration Management

- Create a standard configuration
- Compare configurations to standard configuration
- Track configuration changes

• Application Performance Management

- Task-based security
- Alert notifications
- System metrics
- Log management
- Search by user

JD Edwards EnterpriseOne Server Manager gives you a central, browser-based console to manage and monitor your JD Edwards EnterpriseOne environments. With JD Edwards EnterpriseOne Server Manager, you lower your total cost of ownership by decreasing the time to deploy a new Tools release by up to 63 percent. Plus, with a single click you can identify all logs associated with a user for simplified trouble shooting and reduce the time to provision new servers with standard configurations.

The Issue: Effort to Administer Multiple Servers, Multiple Environments

Customers typically have multiple servers and environments that sometimes are housed in different locations to meet a business's operational needs. These servers could have different configurations and patch levels, which makes system administration challenging. Unless you have a tool that provides centralized management capabilities, it can be very difficult and time-consuming for you to administer a multi-server environment in both a timely and accurate manner.

The Solution: A Centralized Console to Manage Your JD Edwards EnterpriseOne System

Oracle's JD Edwards EnterpriseOne Server Manager gives you a central, browser-based console (see Figure 1) that lets your administrators monitor and manage every JD Edwards EnterpriseOne server throughout your system, even if the machines are not located in the same building. With this solution, you can standardize and simplify processes across your JD Edwards EnterpriseOne topology for:

- **Lifecycle Management**—Server Manager standardizes the process of applying JD Edwards EnterpriseOne Tools releases and updates, regardless of server types. This standardization increases deployment accuracy, reduces the level of effort, and simplifies the entire process.
- **Configuration Management**—All JD Edwards EnterpriseOne configuration files are managed and modified from the central console. This allows system administrators to control access to and prevent unauthorized modifications to system configuration.
- **Application Performance Management**—From the central console, administrators can quickly check the status and health of all JD Edwards EnterpriseOne servers. This simplification streamlines the correlation of system availability and performance problems.

FEATURE/FUNCTION HIGHLIGHTS

- Consolidated view of all JD Edwards EnterpriseOne servers
- Standardize system administration processes
- Simplify key administration activities
- Create standard configurations
- Track configuration changes
- Compare configurations to standard configuration
- Task-based security
- Alert notifications
- System metrics
- Log management
- Search by user

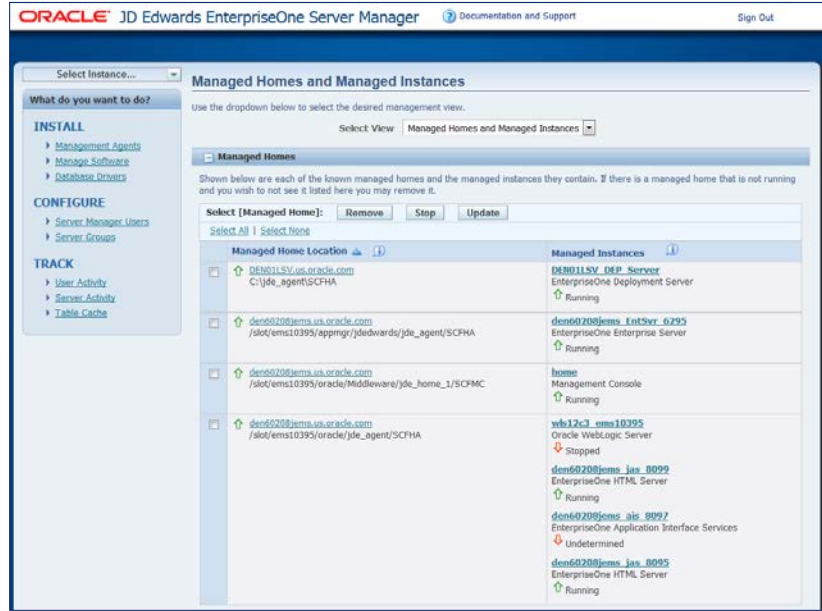


Figure 1. Server Manager provides a central console for every server in your JD Edwards EnterpriseOne system.

Intuitive Approach of Configuration Management

Configuration management with JD Edwards EnterpriseOne Server Manager is user-friendly with a metadata-driven interface (see example in Figure 2) that defines all configuration attributes with intuitive text, associated helps, and valid values for your system. JD Edwards EnterpriseOne Server Manager maintains a history of configuration changes that enables you to understand your configuration, report on configurations changes over time, and assist with system compliance.

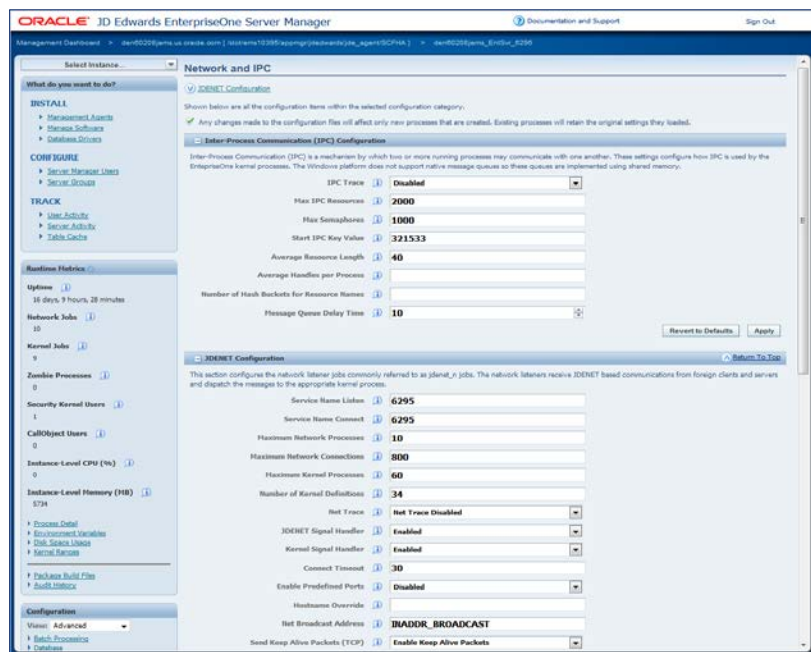


Figure 2. Clear and concise configuration management of your entire JD Edwards EnterpriseOne system.

Simplifying Daily Management with Application Performance Management

JD Edwards EnterpriseOne Server Manager simplifies the daily management and monitoring of JD Edwards EnterpriseOne with:

- **System Monitors**—A comprehensive set of availability and performance monitors can be configured to alert administrators when defined thresholds (such as outstanding server request, long-running UBEs, and number of simultaneous users) have been exceeded, thus allowing administrators to proactively address possible issues.
- **Search by User**—For user-specific issues, your administrator can search by user ID to retrieve logs files associated with that ID with a single click. This greatly reduces the level of effort for the administrator to resolve user issues.
- **Log Management**—Your administrators can view, retrieve, and search all JD Edwards EnterpriseOne log files from JD Edwards EnterpriseOne Server Manager. To further simplify the identification of application server issues, the associated log files are color-coded to highlight errors.

Lowering Total Cost of Ownership with a Server Manager Made for You

JD Edwards EnterpriseOne Server Manager lowers your total cost of ownership by:

- Providing a consolidated view of JD Edwards EnterpriseOne servers
- Standardizing key system administration processes
- Simplifying daily administration of JD Edwards EnterpriseOne
- Improving system compliance

Solution Integration with JD Edwards EnterpriseOne Applications





Oracle offers JD Edwards EnterpriseOne Server Manager effective with JD Edwards Tools 8.97 for JD Edwards EnterpriseOne applications release 8.9 and later.

CONTACT US

For more information about JD Edwards EnterpriseOne, visit oracle.com or call +1.800.ORACLE1 to speak to an Oracle representative.



CONNECT WITH US

-  blogs.oracle.com/oracle
-  facebook.com/oracle
-  twitter.com/oracle
-  oracle.com

Integrated Cloud Applications & Platform Services

Copyright © 2016, Oracle and/or its affiliates. All rights reserved. This document is provided for information purposes only, and the contents hereof are subject to change without notice. This document is not warranted to be error-free, nor subject to any other warranties or conditions, whether expressed orally or implied in law, including implied warranties and conditions of merchantability or fitness for a particular purpose. We specifically disclaim any liability with respect to this document, and no contractual obligations are formed either directly or indirectly by this document. This document may not be reproduced or transmitted in any form or by any means, electronic or mechanical, for any purpose, without our prior written permission.

Oracle and Java are registered trademarks of Oracle and/or its affiliates. Other names may be trademarks of their respective owners.

Intel and Intel Xeon are trademarks or registered trademarks of Intel Corporation. All SPARC trademarks are used under license and are trademarks or registered trademarks of SPARC International, Inc. AMD, Opteron, the AMD logo, and the AMD Opteron logo are trademarks or registered trademarks of Advanced Micro Devices. UNIX is a registered trademark of The Open Group. 0116