

JD Edwards EnterpriseOne Portal Solutions

ORACLE®

**JD EDWARDS
ENTERPRISEONE**

PRODUCT HIGHLIGHTS

- Two portal options:
 - Oracle WebCenter Portal
 - IBM WebSphere Portal
- EnterpriseOne WSRP portlet development tools
- Standards-based with
 - WSRP
- Security includes:
 - LDAP
 - Single sign-on
 - JD Edwards application security

Your business needs a portal to provide a single and secure point of access for all of your interactive users. These portals must aggregate disparate content in order to present the right information to the right people. With JD Edwards EnterpriseOne Portal Solutions, you provide a framework for building, deploying, and managing your portal content. Out-of-the-box, JD Edwards EnterpriseOne provides prebuilt portlets for common business processes. If these prebuilt portlets do not match your exact functional needs, then use integrated development tools within the JD Edwards EnterpriseOne toolset to create your own portlets. Either way, you get portal interoperability standards such as WSRP for easy configuration and deployment. Additionally, use a combination of security options such as single sign-on, LDAP, and native JD Edwards application security.

The Issue: The Need for More than One Enterprise-Wide Application

Gone are the days when organizations utilized a single enterprise-wide application software package for all their business processes. In today's environment, many companies utilize multiple best-of-breed products to extend the functionality of their core ERP packages. In this type of environment, not only is the integration of enterprise data necessary, but also the integration of the user interface. End users need the capability to access and organize application content from multiple sources within a single customizable user interface.

The Solution: Multiple Applications, One Portal for Your Entire Enterprise

Oracle's JD Edwards EnterpriseOne provides a comprehensive portal solution that enables customers to aggregate and secure application content within a centralized user interface. To support this, JD Edwards EnterpriseOne distributes and supports two industry-leading portal servers: the Oracle WebCenter Portal and the IBM WebSphere Portal. JD Edwards EnterpriseOne provides WSRP (Web Services for Remote Portlets) portlet content for common business processes along with the integrated development tools that enable you to create your own portlets.

Oracle WebCenter Portal

The Oracle WebCenter Portal offers a complete and integrated framework for building, deploying, and managing enterprise portals on Oracle WebLogic Server. The Oracle

WebCenter Portal delivers a unified and secure point of access to all enterprise information and services to improve business visibility and collaboration, reduce integration costs, and ensure investment protection.

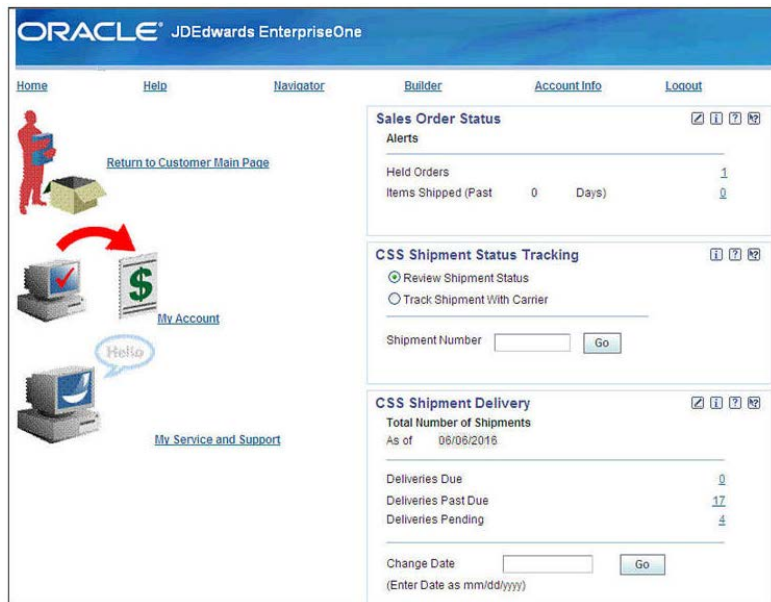


Figure 1. JD Edwards EnterpriseOne Customer Self Service Portlets

JD Edwards EnterpriseOne with IBM WebSphere Portal

The IBM WebSphere Portal, along with the JD Edwards WSRP portlet content, provides your employees, suppliers, business partners, and customers a single point of access to the information they need, when they need it.

JD Edwards EnterpriseOne WSRP Portlet Content

JD Edwards EnterpriseOne WSRP portlets are built on the foundation of the JD Edwards EnterpriseOne Tools architecture. The JD Edwards EnterpriseOne Forms Design Aid (FDA) is an integrated tool that is responsible for all JD Edwards EnterpriseOne user interfaces, including our HTML and portlet applications. This enables you to leverage your existing skills if the need arises to extend the portlet application to your specific needs.

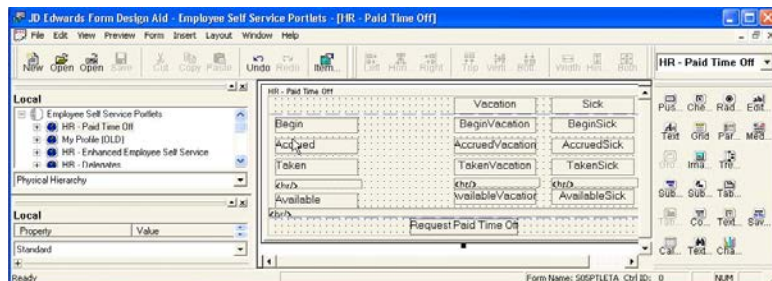


Figure 2. Forms Design Aid (FDA) development tool for JD Edwards EnterpriseOne Portlets

Standards-Based Portal Technology Includes WSRP for Publishing

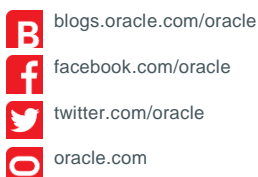
JD Edwards EnterpriseOne portlet content utilizes the WSRP standard. The adoption of the WSRP standard provides a modernized framework for content to be easily configured and deployed within the portal and thus provides you greater flexibility within your portal architecture.

CONTACT US

For more information about JD Edwards EnterpriseOne, visit oracle.com or call +1.800.ORACLE1 to speak to an Oracle representative.



CONNECT WITH US



Integrated Cloud Applications & Platform Services

Copyright © 2016, Oracle and/or its affiliates. All rights reserved. This document is provided for information purposes only, and the contents hereof are subject to change without notice. This document is not warranted to be error-free, nor subject to any other warranties or conditions, whether expressed orally or implied in law, including implied warranties and conditions of merchantability or fitness for a particular purpose. We specifically disclaim any liability with respect to this document, and no contractual obligations are formed either directly or indirectly by this document. This document may not be reproduced or transmitted in any form or by any means, electronic or mechanical, for any purpose, without our prior written permission.

Oracle and Java are registered trademarks of Oracle and/or its affiliates. Other names may be trademarks of their respective owners.

Intel and Intel Xeon are trademarks or registered trademarks of Intel Corporation. All SPARC trademarks are used under license and are trademarks or registered trademarks of SPARC International, Inc. AMD, Opteron, the AMD logo, and the AMD Opteron logo are trademarks or registered trademarks of Advanced Micro Devices. UNIX is a registered trademark of The Open Group. 0116