

ORACLE®



JD Edwards EnterpriseOne Advanced Job Forecasting

Overview Presentation

Program Agenda

- 1 Business Problem
- 2 Benefits
- 3 Targeted Industries and Companies
- 4 Features



Job Forecasting...part art...part science

Program Agenda

- 1 **Business Problem**
- 2 Benefits
- 3 Targeted Industries and Companies
- 4 Features

Business Problem

- Initial estimates quickly become out of date
- Costs/rates change over project life
- Need to minimize cost overruns
- No control, structure or visibility into forecasts



Business Needs

- Project managers need:
 - Multiple forecasting methods
 - Create “what-if” scenarios
- Project executives need:
 - Status of monthly forecasts across portfolio
 - A detailed/traceable/auditable backup of how forecasts were derived



Program Agenda

- 1 Business Problem
- 2 **Benefits**
- 3 Targeted Industries and Companies
- 4 Features

Advanced Job Forecasting Benefits

- Minimize project cost and scope increases
- Timely forecast updates through status checks
- Accurately forecast remaining project costs through forecasted unit rates
- Audit trail of forecast details
- Forecast calculations configurable to your business



Program Agenda

- 1 Business Problem
- 2 Benefits
- 3 **Targeted Industries and Companies**
- 4 Features

Advanced Job Forecasting

Targeted Industries and Companies

- Targeted Industries
 - Engineering & Construction
 - Oil & Gas
 - Other project-based companies
- Targeted Companies
 - Managing large projects
 - Current companies already licensed for Project Costing



Program Agenda

- 1 Business Problem
- 2 Benefits
- 3 Targeted Industries and Companies
- 4 **Features**

Advanced Job Forecasting

High Level Features

- Real-time visibility of job financials
(Budgets, actuals, open commitments, pending change orders, billing)
- Identify detailed remaining project work by project task (labor, material, other costs)
- Accurately assess remaining job costs through current/forecasted unit rates
- User-defined Methods of Computation



Advanced Job Forecasting

Detailed Job Forecast

View project financials as of a point in time

Manage forecast statuses

Filter based on tasks currently being worked on

Use multiple forecasting methods in each forecast

ORACLE JD Edwards

Edit Job Forecast Layout: (No Layout) Query: All Records

Job Number: 99991 Denver Airport - Concourse A Thru G/L Date: 06/30/14
 Forecast Name/ID: Moyte 18 Forecast Basis Date/Time: 07/28/15 15:25:14
 Forecast Status: 10 Open Hide Zero Amounts Hide Zero Current Actuals

Records 1-10

Cost Code	Cost Type	Cost Code Description	Account Description	UM	Unit of Measure Description	L	M	C	Method of Computation Description	Forecasted Projected Final Amount	Forecasted Projected Final Units	Current Revised EAC Amount	Prior Revised EAC Amount	Variance - Revised EAC Amount	Current Revised EAC Units	Prior Revised EAC Units	Variance - Revised EAC Units	Current R ETC Amo
02200	1342	Earthwork	Overtime	MH	Man Hour	9	D		Default	13,053,000.00	13,053.00							
02200	1343	Earthwork	Burden	.	.	9	D		Default	48,594.00	17.00							
02200	1350	Earthwork	Materials	EA	Each	9	P		Percent Complete	26,194.00	19.00							
02200	1355	Earthwork	Equipment	HR	Hour	9	D		Default	31,405.00	21.00							
02200	1360	Earthwork	Subcontracting	LS	Lump Sum	9	B		Buyout									
02200	8136	Earthwork	401K Contribution	.	.	8	D		Default									
02200	8140	Earthwork	Insurance-Health & Disabi...	.	.	8	D		Default									
02200	8192	Earthwork	Vacation Expense	.	.	7	D		Default									
02200		Earthwork				4	T		Totalling (Level of Detail)	14,592,193.00								
02600		Paving & Surfacing	Paving & Surfacing	SF	Square Feet	4	P		Percent Complete									
02600	1340	Paving & Surfacing	Labor	MH	Man Hour	9	Q		Quantities	4,123.00	2.00							
02600	1341	Paving & Surfacing	Regular	MH	Man Hour	9	W		Forecast EAC	128,654.12	454.00	128,654.12		128,654.12	454.00		454.00	
02600	1342	Paving & Surfacing	Overtime	MH	Man Hour	9	X		Forecast Estimate To Co...	18,124.00	78,303.00							
02600	1343	Paving & Surfacing	Burden	.	.	9	Z		Forecast Remaining Work	24,124.00	8.00							
02600	1350	Paving & Surfacing	Materials	EA	Each	9	F		Forced	55,703.00	10.00							
02600	1355	Paving & Surfacing	Equipment	HR	Hour	9	D		Default	66,814.00	12.00							
02600	1360	Paving & Surfacing	Subcontracting	LS	Lump Sum	9	B		Buyout									

Advanced Job Forecasting

Remaining Work

ORACLE® JD Edwards

Edit Remaining Work Forecast

Project Forecast

Forecast Name: Job 5100 Forecast for July Forecast Basis Date: 07/22/2015 Thru G/L Date: 07/22/2015

Account

Job Number: 5100 Potomac Hotel Account Level of Detail: 9
 Cost Code: 02600 Paving & Surfacing Unit of Measure: MH Man Hour
 Cost Type: 1341 Regular Method of Computation: Z Forecast Remaining Work

Budget/Actuals

Forecasted Work

Total Remaining Work Units: To-Be-Committed Amount: 4,500.00 Forecasted Budget Amount:
 Total Cost To Complete: 34,278.65 To-Be-Committed Units: 525.00 Forecasted Budget Units:
 Total Cost At Completion: 34,278.65

Billing Amounts

Records 1 - 11

Remaining Work Description	Cost To Complete Quantity	UM	Unit of Measure Description	Cost To Complete Rate	Cost To Complete Amount	Remark
General Construction Laborer	135.00	HR	Hour	14.25	1,923.75	
Grader, Bulldozer, and Scraper Operator	150.00	HR	Hour	30.50	4,575.00	
Civil Engineering Supervisor II	30.00	HR	Hour	45.00	1,350.00	

Total used to update projected final amounts at cost code level

Unlimited details below cost code level

Remaining quantities and rates



Advanced Job Forecasting

Auditable History

Ability to build your own One View reports

History stored for In-Review and Approved forecasts

View forecast as of a point in time

ORACLE JD Edwards

View Job Forecast History

Job Number: DL100 DL Job Thru G/L Date: 12/31/2015

Forecast Name/ID: Tower Project - July 818 Forecast Basis Date/Time: 08/24/2015 14:03:50

Forecast Status: 90 Approved

Records 1 - 17

Cost Code	Cost Type	Account Description	UM	Unit of Measure Description	L	M	C	Method of Computation	Forecasted Projected Final Amount	Forecasted Projected Final Units	Current Revised EAC Amount	Current Revised EAC Units	Current Revised ETC Amount	Current Revised ETC Units	Total Remaining Amount	Total Remaining Units	Cost To Complete Rate	Total Unit
		DL Job	.		3	D		Default										
02200		Earthwork	.		4	D		Default										
02200	1340	Labor	.		9	Z		Forecast Remaining Work	19,089.67	199.00					344.00	199.00		
02200	1341	Material	.		9	Z		Forecast Remaining Work	27,801.00	111.00					12,321.00	111.00	111.00	
02200	1342	Equipment	.		9	Z		Forecast Remaining Work	10,710.00	53.00					7,050.00	53.00		
02200					4	T		Totalling (Level of Detail)	57,600.67						19,715.00			
02600		Paving & Surfacing	.		4	D		Default										
02600	1340	Labor	.		9	W		Forecast EAC	4,000.00		4,000.00							
02600					4	T		Totalling (Level of Detail)	61,600.67		4,000.00							
02800		Landscaping	.		4	D		Default										
02800	1340	Labor	.		9	Y		Forecast Estimate To Complete	20,000.00				12,000.00					
02800	1341	Material	.		9	D		Default	9,000.00									
02800	1342	Equipment	.		9	D		Default	10,100.00									
90000	1380	Revenue	.		9	D		Default										
02800					4	T		Totalling (Level of Detail)	100,700.67				12,000.00					
					3	T		Totalling (Level of Detail)	100,700.67		4,000.00		12,000.00		19,715.00			
					2	T		Totalling (Level of Detail)	100,700.67		4,000.00		12,000.00		19,715.00			

Advanced Job Forecasting

User-Defined Formulas

Formulas used across user-defined MOCs

Access project financial information across the enterprise

System helps build formulas for you

ORACLE® JD Edwards

Edit Formula Definition

✓ ✕ ⚙️ Tools

Formula Name * RBFA

Formula Description * Revised Budget + FA

Components

Ledger Types	Billing Amounts	Job Information
Revised Budget Amounts	Revised Budget Units	Numeric Factor
Formulas		

Operator

+	X
-	/

Display

Clear All Display Abbreviated Text

Clear Last Display Full Text

Formula Definition

Job Cost Budget Amount+Field Progress Amounts

Advanced Job Forecasting

User-Defined Oversight with Watchlists

ORACLE® JD Edwards

Work with Job Forecasts

Job Number

Records 1 - 40

Thru G/L Date	Job Number	Job Description	Forecast ID	Forecast Status	Forecast Status Description
06/11/2015	3000	3000 Job	526 053115	90	Approved
06/11/2015	3000	3000 Job	524 AD	90	Approved

Layout: (No Layout)

- Personal**
 - Closed Forecasts in My Area (129)
 - In-Review Forecasts in My Area (24)
 - Open Forecasts in My Area (153)
- Shared**
 - OVFS Completed Statements (0)
 - OVFS Error Statements (0)

Advanced Job Forecasting

User-Defined Methods of Computation

Date-effective MOCs

Easily build your own MOC

Ability to have multiple sets of logic and formulas

ORACLE JD Edwards

Edit User-Defined Method of Computation

Method of Computation: 1 User-Defined MOC
Effective From Date: 01/01/2019 Effective Thru Date: []

Records 1 - 9

	Operator	Value	Value Description	Relationship *	Formula	Formula Description	Numeric Value	Rule Number	Sequence Number
<input checked="" type="radio"/>	Assign	FA	Field Progress Amount	Equal to			10000	1	1
<input type="radio"/>	If	PC	Job Percent Complete	Less than or equal to	THRESH	Threshold %		2	1
<input type="radio"/>	Then	HA	Projected Final Amount	Equal to	RBLA	Revised Budget Ledger Amounts		2	2
<input type="radio"/>	Then	HU	Projected Final Units	Equal to	RBLU	Revised Budget Ledgers Units		2	3
<input type="radio"/>	If	PC	Job Percent Complete	Greater than	THRESH	Threshold %		3	1
<input type="radio"/>	And	FU	Forced Units	Equal to				3	2
<input type="radio"/>	Then	HU	Projected Final Units	Equal to	RBFU	Revised Budget + FU		3	3
<input checked="" type="radio"/>	Assign	FU	Field Progress Units	Equal to			500	4	1
<input type="radio"/>	-- Select One --			-- Select One --					

Advanced Job Forecasting

User-Defined Methods Of Computation

Date effective

If-Then-Else logic to create meet business forecasting needs

ORACLE® JD Edwards

User-Defined Method of Computation Revision

Method of Computation: 1

Effective From Date: 07/14/2018

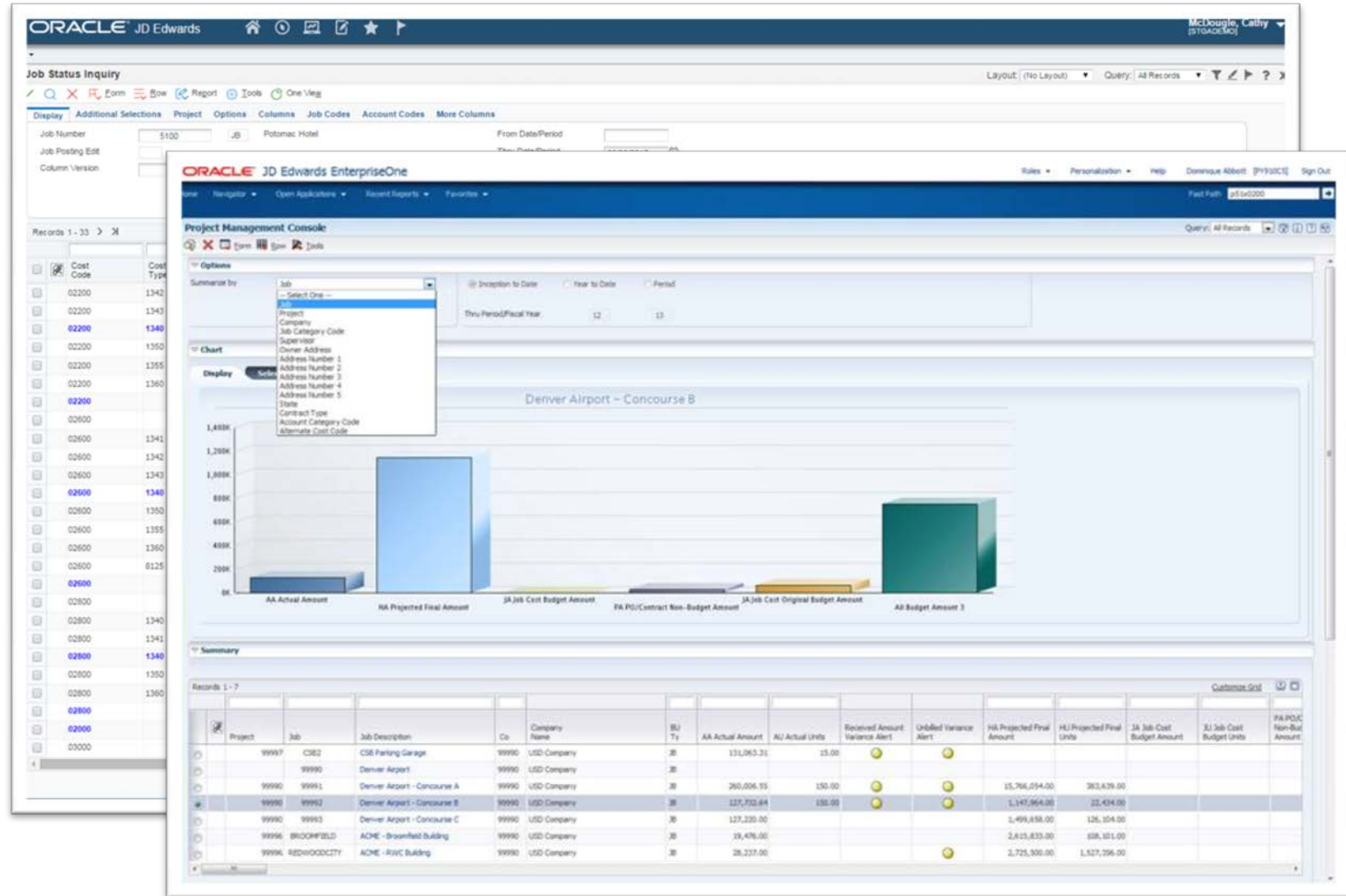
Effective Thru Date:

Operator	Formula 1	Formula 1 Description	Relationship	Formula 2	Formula 2 Description	Numeric Value
If	PC	Job Percent Complete	GE	THRESH	Threshold %	
And	FA	Forced Amount	NE			
Then	HA	Projected Final Amount	EQ	RBFA	Revised Budget + FA	
-- Select One --						

Forecast Information

Ability to see select forecasting details across other project applications

- Job Status Inquiry
- Mobile Applications for Projects
- In-Memory Project Portfolio Advisor
- OVR for Project Costing



Hardware and Software Engineered to Work Together

ORACLE®