

IBM OPTIM Data Growth Solution Validated Integration with PeopleSoft Enterprise 9.0



Effective Data Management Delivers Business Value.

111 Campus Drive
Princeton, NJ 08540
Tel: +1.800.426.4968
optimsolution.com

Integrated archiving supports Oracle's PeopleSoft Enterprise human capital management applications.

Company Overview

As an industry leader in integrated data management, IBM provides solutions that align the management of enterprise application data with business objectives to improve service levels, mitigate risk, and control costs. IBM Optim Solutions for Integrated Data Management offer proven, integrated capabilities for managing enterprise application data, from requirements to retirement. Today organizations of all types leverage Optim to streamline database administration, speed application development, and enable effective governance. Optim delivers better business outcomes at lower cost and with less risk, while providing capabilities that scale across enterprise applications, databases, and platforms.

Integration Overview

The IBM Optim Solution for Oracle's PeopleSoft Enterprise delivers measurable benefits, enabling sites to control infrastructure costs and streamline application upgrades by archiving historical PeopleSoft human capital management transactions. Using PeopleSoft pages, sites specify archive criteria such as accounting period, business unit, and fiscal year. Optim applies PeopleSoft application-specific functional condition checks, ensuring that each archived transaction record represents a historical reference snapshot of business activity. Sites can easily access, query, and report on archived records via the familiar PeopleSoft interface.

Integration Details

At the user interface level, the IBM Optim Solution for Oracle's PeopleSoft Enterprise integrates with PeopleSoft applications through Archive and Restore Request pages developed with Oracle's PeopleCode and delivered as PeopleSoft projects. Authorized users define and initiate requests through the PeopleSoft application. At the processing level, the IBM Optim Solution for Oracle's PeopleSoft Enterprise links each module to the archive and restore requests. Once invoked, these requests are performed by Optim on the PeopleSoft database to populate the archive environment.

This tight integration and the familiar user interface—with PeopleSoft menus, pages, and components for PeopleSoft application users—makes it extremely easy for users to become familiar with the archive processes without much of a learning curve from day 1.



Through the Oracle PartnerNetwork Application Integration Architecture for Partners Initiative, partners with validated integrations are able to provide customers with standards-based product integrations, tested and validated by Oracle. Customers benefit from improved risk management and smoother upgrade capability, leading to a lower total cost of ownership and greater overall satisfaction.

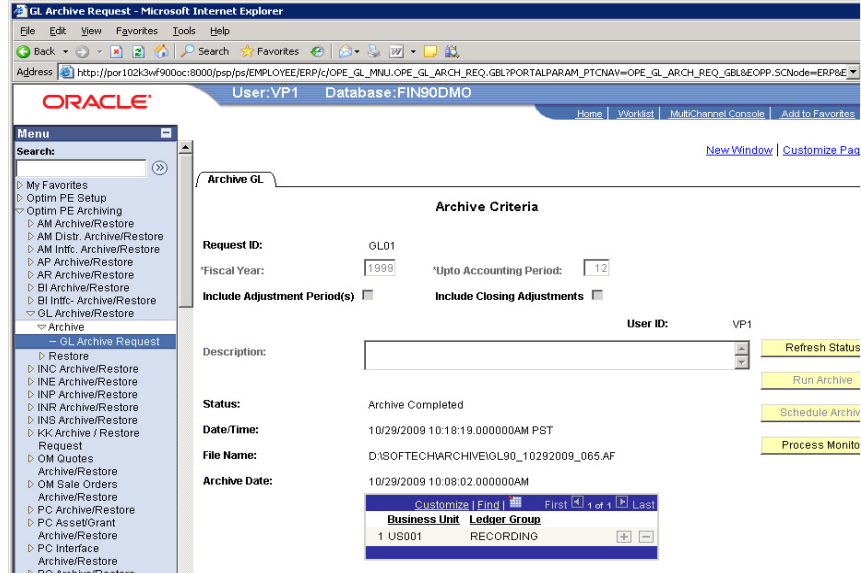
Availability
optimsolution.com

Support
+1.800.426.7378
[www-01.ibm.com/
software/data/optim/
support/](http://www-01.ibm.com/software/data/optim/support/)

Worldwide Contacts:
ibm.com/planetwide/

Integration is achieved through installation of the following objects that Optim provides:

- PeopleSoft objects—such as menus, components, pages, and records—uniquely developed for each module and packaged as PeopleSoft projects. The PeopleSoft objects are not affected by the installation of Optim.
- Optim-specific objects installed by use of the Optim software. These objects integrate Optim with the PeopleSoft database and are needed for archiving and retrieving data.



Optim provides native access to archived and current transactions through familiar PeopleSoft pages and processes.

Optim provides a variety of mechanisms to enable sites to choose how they want to access or restore (selectively or in full) their archived data. Sites can leverage different data access paths at different points in the archive lifecycle. Native application access to archives provides convenience, particularly during the early years of the lifecycle. To interact with archives maintained for long-term retention in content-addressed storage environments, sites may want to leverage Optim’s application-independent access capabilities. Additionally, Optim provides sites with mechanisms—such as a variety of reporting toolsets, native database query facilities, and PS Query—for accessing archived data.

Environment

IBM Optim Environment

IBM Optim Solution v6.1.1 for Oracle’s PeopleSoft Enterprise
Oracle Database 10g, Enterprise Edition Release 2 (10.2.0.3.0)
IBM Optim v7.1.2

Oracle Environment

PeopleSoft Enterprise 9.0 human capital management applications (PeopleSoft Benefits Administration, Base Benefits, PeopleSoft Global Payroll, PeopleSoft

Payroll for North America, Organizational Development, PeopleSoft Human Resources (Recruit Workforce Module), PeopleSoft Time and Labor, Workforce Administration, Workforce Development, Workforce Monitoring)
Oracle Database 10g, Enterprise Edition Release 2 (10.2.0.3.0)
PeopleSoft PeopleTools Release 8.45

For additional information about partnering with Oracle, please contact opninfo_us@oracle.com or visit partners.oracle.com.

Oracle is a registered trademark of Oracle Corporation and/or its affiliates. Other names may be trademarks of their respective owners.