

MAGIC SOFTWARE ENTERPRISES

iBOLT Version 3.2 Validated Integration with JD Edwards World A9.2



23046 Avenida de la Carlota
Suite #300
Laguna Hills, CA 92653
Tel.: +1.949.250.1718
Fax: +1.949.250.7404
magicsoftware.com



Through the Oracle Partner Network, partners with validated integrations are able to provide customers with standards-based product integrations, tested and validated by Oracle. Customers benefit from improved risk management and smoother upgrade capability, leading to a lower total cost of ownership and greater overall satisfaction.

Information Without Boundaries

iBOLT orchestrates business information across multiple applications, platforms, and Websites.

Company Overview

Magic Software Enterprises is a global provider of business software solutions. Our business technology gives partners and customers the power to work smarter and future-proof their IT investments. Magic Software offers the uniPaaS application platform and iBOLT integration platform to customers in more than 50 countries worldwide through a network of 14 regional offices and 27 international distributors.

We offer solutions that connect enterprise applications such as enterprise resource planning (ERP), customer relationship management (CRM), human resources management (HRM), and supply chain management (SCM) together with content management, portal, database, message queue, e-commerce, and other solutions. Among the common business needs that we have experience with are ERP system integration to Microsoft SharePoint, CRM, e-Commerce/Website, HL7, SCM, Lotus Notes/Domino, Exchange Server, Microsoft Office, Point of Sale (POS), Warehouse Management (WMS) applications, and many more. Solutions are offered for both synchronous and asynchronous business process orchestration.

Integration Overview

With Magic Software's iBOLT version 3.2 Integration Platform for Oracle's JD Edwards World A9.2 you can enhance and extend business processes across multiple applications using a visual drag, drop, and configure methodology. Features include:

- Visual process definition without any need for line-by-line programming
- Extensive library of technology adapters
- Data mapping and XML handling
- Step-by-step testing and debugging of process flows
- Complete monitoring of business process activity with fully customizable dashboard views and logging with attachments

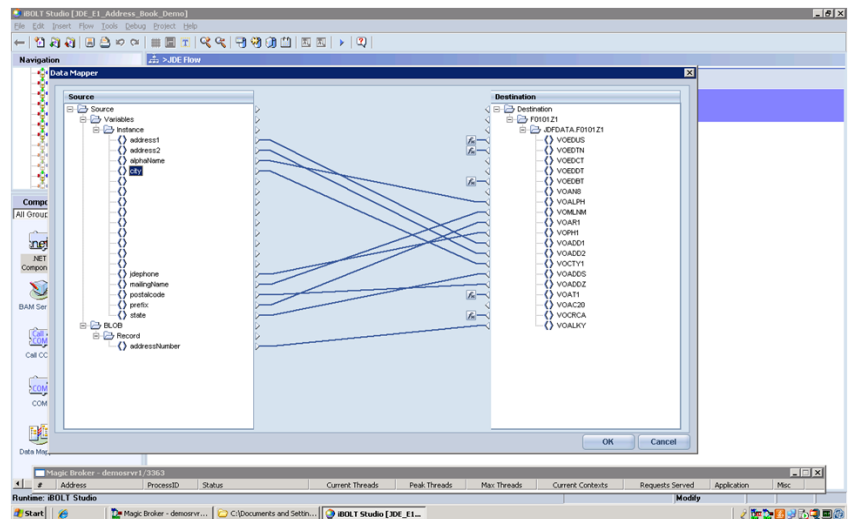
The integration design is accomplished without line-by-line scripting or programming. The results of the visual drag, drop, and configure definition of integration flows are contained in XML format and executed by the iBOLT Integration Server at runtime. Events trigger integration activity, which executes in a unique instance for each

process flow.

Integration Details

Magic Software's iBOLT Integration Suite connects with JD Edwards World using either z-processes or business services as needed. You may host the iBOLT Integration Platform on Oracle's Sun servers running Oracle Solaris or on other platforms including Windows, Linux, and IBMi.

Using iBOLT, JD Edwards World data may be mapped to and from multiple types including XML, flat file, flow variable, operational data store, or user-defined storage. Business logic may be added using a simple expression editor contained within iBOLT.



Data flows are easily defined between JD Edwards World and iBOLT target applications.

Availability

USA/CanadaTel.: + 1.949.250.1718

France

Tel.: + 33.1.49.10.58.58

Germany

Tel.: +49.89.962.73.0

Hungary

Tel.: +36.1.216.9910

India

Tel.: +91.9886.455.398

Japan

Tel.: +81.3.5365.1600

Netherlands

Tel.: +31.0.30.65.66.266

South Africa

Tel.: +27.11.258.4442

United Kingdom

Tel.: +44.1344.667.000

World Headquarters

Tel.: +972.3538.9292

webmaster@magicsoftware.com

Support

Tel.: +1.949.250.1718

usdisp@magicsoftware.com

<http://devnet.magicsoftware.com>

Business processes were interfaced between iBOLT and JD Edwards World using XML as part of an orchestrated business flow. At runtime, iBOLT runs in the background and assists the movement of business process information between JD Edwards World and target applications. The iBOLT Integration Monitor logs processes that are executed on the server and allows for data attachment, such as the XML files attached in the validation process.

Environment

Magic Software Enterprises Environment

iBOLT Version 3.2

Oracle Database 11g

Oracle Environment

Oracle's JD Edwards World A9.2

For additional information about partnering with Oracle, please contact opninfo_us@oracle.com or visit partners.oracle.com. Oracle is a registered trademark of Oracle Corporation and/or its affiliates. Other names may be trademarks of their respective owners.