

# MERKUR GROUP

## EDI Integration for PeopleSoft Enterprise 9.0

### Validated Integration with PeopleSoft Enterprise



8624 Jacquemin Drive  
West Chester, OH 45069  
Tel: +1.800.637.1704  
Fax: +1.513.612.8080  
[Merkur.com](http://Merkur.com)

*A fast, easy, and cost-effective way to do EDI within Oracle's PeopleSoft Enterprise without expensive EDI translation software or value-added network connectivity*

*EDI Integration for PeopleSoft provides a hosted SaaS solution combined with a lightweight software connector to fully automate buy-side EDI, including outbound purchase orders and inbound PO acknowledgements and invoices.*

#### Company Overview

For more than 10 years, Merkur Group has helped companies in many industries save time and money and increase operating efficiency by automating document-intensive business processes such as purchasing, billing, accounts payable, receivables, order management, HR, and many others. They do so by replacing or augmenting manual processes with integrated document and data automation technology such as Merkur's DeliveryWare, WebDelivery, and hosted EDI products and services.

The Merkur PeopleSoft Connector, used in conjunction with hosted services of Merkur's cosubsidiary Edict Systems, provides an optimal EDI solution for automating outbound and inbound business documents.

Large organizations use our suite of hosted solutions, including

- **EnterpriseEC**, to connect to trading partners and manage trading partner communities
- **Hosted Data Translation**, to integrate data with in-house systems
- **ValidateEC**, to validate data and manage discrepancies before data is integrated into in-house systems
- **WebEDI**, a Web-based solution for small and medium-size vendors to maximize the number of suppliers that participate in supporting EDI initiatives
- **Trading Community Ramping**, to quickly increase the number of EDI trading partners by providing onboarding services to maximize the value of EDI capabilities



**Validated Integration**  
PeopleSoft Enterprise

Through the Oracle PartnerNetwork Application Integration Architecture for Partners Initiative, partners with validated integrations are able to provide customers with standards-based product integrations, tested and validated by Oracle. Customers benefit from improved risk management and smoother upgrade capability, leading to a lower total cost of ownership and greater overall satisfaction.

#### Integration Overview

Merkur's EDI Integration for PeopleSoft Enterprise uses native PeopleSoft XML that is mapped to and from EDI data as a service via Hosted Data Translation and then sent to and received from vendors via EnterpriseEC. Trading partners that already do EDI receive data by whichever means they prefer (value-added network, AS2, secure FTP).

### **Availability**

+1.800.443.3428

E-mail:

info@EdictSystems.com

Vendors that are not EDI-capable can use one of our WebEDI solutions to support all the EDI requirements of their customers. Our Trading Community Ramping services, combined with the availability of WebEDI services for their small and medium-size vendors, provide a way to get 100 percent EDI participation from all vendors.

This EDI solution offers many benefits:

- Simple integration with PeopleSoft Enterprise enables users to dispatch purchase orders (POs) as they normally do.
- No changes to PeopleSoft XML are required. All data translation is accomplished by the Hosted Data Translation service.
- Hosted EDI services enable secure delivery of orders to trading partners that currently do EDI, via any communications protocol, and to those that do not, via hosted WebEDI services.
- The EnterpriseEC Web interface provides visibility into and management of all transactions.
- Inbound data can be validated against outbound data for exception handling before data is integrated into PeopleSoft Enterprise. Documents can be accepted, accepted with warning, or rejected with notification to both the buyer and the vendor.
- Vendor invoices from associated POs are automatically loaded into PeopleSoft Enterprise, completing the buy-side transaction.

### **Support**

+1.800.443.3428

E-mail:

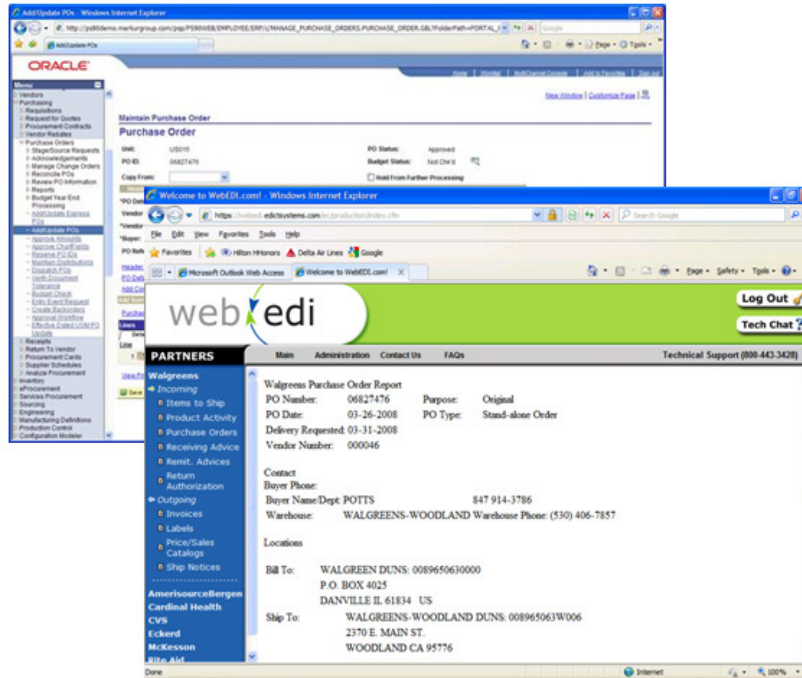
support@EdictSystems.com

### **Integration Details**

Merkur's EDI Integration for PeopleSoft Enterprise uses native PeopleSoft XML interfaces for both outbound PO data and associated incoming invoice/voucher data. POs are dispatched with the PeopleSoft EDX method, which enables users to set up and dispatch XML-based POs just as they would for printed POs.

The dispatched XML POs are picked up by a lightweight Merkur PeopleSoft Connector, which, via secure FTP, delivers the XML orders to EnterpriseEC, where it is translated into EDI data via Hosted Data Translation. The data is sent to the vendor via its preferred communication method (value-added network, AS2, Secure FTP) or made available to a non-EDI vendor via WebEDI, a Web-based EDI interface.

If the vendor is required to send back EDI PO acknowledgements or invoices, the EDI data will be mapped to PeopleSoft XML and will be automatically loaded into PeopleSoft Enterprise via the integration broker or validated by ValidateEC prior to integration.



PeopleSoft Enterprise POs are dispatched normally, producing XML that is transferred to the WebEDI service for presentation to vendors that are not EDI-capable. PeopleSoft XML is translated to EDI for delivery to EDI trading partners.

**Note:** Merkur Group Inc., and Edict Systems, Inc. are wholly owned subsidiaries of Advant-e Corporation.

## Environment

### *Merkur Group Environment*

- EDI Integration for PeopleSoft Enterprise 9.0, Version 1.0
- Merkur PeopleSoft Connector, Version 5.1
- EnterpriseEC, Version 3.1
- Hosted Data Translation, Version 2.0
- WebEDI, Version 2.3
- ValidateEC, Version 1.2

### *Oracle Environment*

- PeopleSoft Enterprise Release 9.0
- PeopleSoft Purchasing
- PeopleSoft Payables
- PeopleSoft PeopleTools Release 8.50
- Oracle WebLogic Server Release 9.2
- Oracle Database 10g Release 2 (10.2.0.1.0)

For additional information about partnering with Oracle, please contact [opninfo\\_us@oracle.com](mailto:opninfo_us@oracle.com) or visit [partners.oracle.com](http://partners.oracle.com).

Oracle is a registered trademark of Oracle Corporation and/or its affiliates. Other names may be trademarks of their respective owners.