

VENTUREFORTH, INC.

vWork 5.2 Validated Integration with Oracle's PeopleSoft Enterprise 9.1



2323 Perimeter Park Drive
Suite 100
Atlanta, GA 30341
Tel.: +1.770.451.8045
Fax: +1.678.205.2770
ventureforth.com

Mobilizing the Workforce

vWork can help you better manage labor, control operating costs, and extend asset life by providing technicians with work order data at the point of performance.

Company Overview

Founded in 1995, Ventureforth is a provider of mobile supply chain and work force management software solutions for Oracle's PeopleSoft Enterprise products. vWork for PeopleSoft Enterprise is built on proven technology that is at work for hundreds of companies worldwide. vWork for PeopleSoft Enterprise eliminates paperwork and automates virtually all aspects of your maintenance data collection and dissemination—increasing productivity, extending the productive life of key assets, and enhancing customer service.

Integration Overview

vWork 5.2 for Oracle's PeopleSoft Enterprise 9.1 provides out-of-the-box support for work order management using standard PeopleSoft Web Services. By giving customers access to prebuilt functionality, Ventureforth's vWork reduces the complexity of implementations while still allowing the flexibility offered by a powerful mobile platform. Standard functionality includes the ability to:

- View work orders, tasks, tools, notes, materials, PO items, meters, and labor
- Edit work orders, tasks, tools, notes, materials, PO items, meters, and labor
- Work in connected, partially connected, or fully disconnected mode

Integration Details

vWork 5.2 for PeopleSoft Enterprise extends the functionality of Oracle's PeopleSoft Maintenance Management to mobile users who operate in partially connected or fully disconnected modes. Supporting work order management and parts management related to work orders, vWork offers prebuilt functionality with the flexibility to configure screens to match customer business processes.

vWork is based on a four-tier architecture that includes:

- **Device/Client Layer:** A client runs on a device that sends and receives data from the server. Using Secure TCP/IP to connect to the server, the client works in disconnected mode since it stores data on the device. All data requests are initiated on



Through the Oracle PartnerNetwork, partners with validated integrations are able to provide customers with standards-based product integrations, tested and validated by Oracle. Customers benefit from improved risk management and smoother upgrade capability, leading to a lower total cost of ownership and greater overall satisfaction.

this tier and sent to the server for fetching and posting back to the Data Layer.

- **Mobile Server Layer:** A scalable server that is capable of working in a clustered environment, with the following responsibilities:

- Stores all client's application logic
- Maintains connection with Tier three
- Translates and proxies client requests to Tier three
- Uses operating systems Windows, Linux, UNIX

Availability

Tel.: +1.770.451.8045

sales@ventureforth.com

- **Data Layer:** Responsible for:

- Fetching data from the PeopleSoft Enterprise system
- storing transactions generated by device/client
- Processing transaction by calling public API provided by ERP system

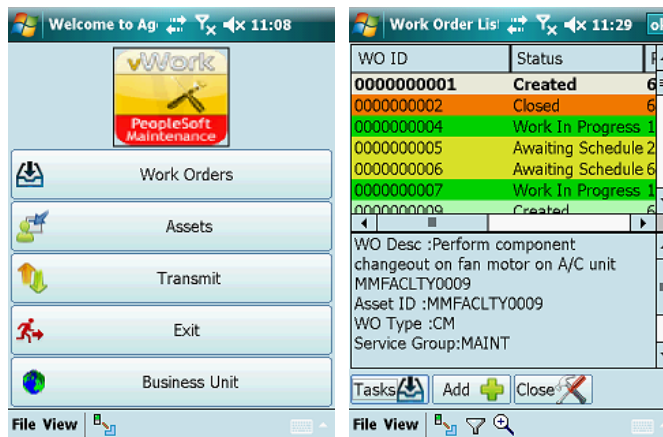
Support

ventureforth.com/new-user.asp

support@ventureforth.com

- **Management Layer:** Web interface responsible for:

- Monitoring transactions
- Notification of errors
- Configuring application-specific setting



Sample vWork screen shots.

Environment

Ventureforth Environment

vWork 5.2

Oracle Environment

Oracle's PeopleSoft Enterprise 9.1

Oracle's PeopleSoft PeopleTools 8.51.07

Oracle Database 10.2.5.0

For additional information about partnering with Oracle, please contact opninfo_us@oracle.com or visit partners.oracle.com

Oracle is a registered trademark of Oracle Corporation and/or its affiliates. Other names may be trademarks of their respective owners.