

BEACON APPLICATION SERVICES NEWMERIX AUTOMATE SUITE VERSION 3.0 VALIDATED INTEGRATION WITH ORACLE'S PEOPLESOFT ENTERPRISE RELEASE 9.0



959 Concord Street
Suite 250
Framingham, MA 01701
Tel: 508-663-4433
Fax: 508-663-4444
www.beaconservices.com

Control Change Intelligently

The Newmerix Suite for PeopleSoft is a comprehensive application lifecycle management product designed to manage the entire lifecycle across PeopleSoft environments.

Company Overview

Founded in 1990, and an original PeopleSoft partner in 1993, Beacon Application Services is a leading integrator of Oracle PeopleSoft Enterprise applications. With nearly 300 successful implementation and upgrade projects, Beacon has developed an outstanding reputation for customer satisfaction. In order to more completely serve the needs of the market, Beacon acquired the Testing and Change Management software assets of Newmerix in 2009. The Newmerix Suite of products provides support for PeopleSoft applications including Financials, HCM, CRM, and Campus Solutions – running under Oracle PeopleTools 8.5 or 8.4x. Headquartered in Framingham, Massachusetts, Beacon has over 100 certified consultants nationwide specializing in Oracle's PeopleSoft Enterprise applications, and provides support, maintenance and development for the Newmerix products.

Integration Overview

Newmerix Automate! for PeopleSoft is comprised of three modules that operate independently as well as in unison. These modules are Automate!Change, Automate!Test, and Automate!Control.

Automate!Change integrates with PeopleSoft Enterprise to achieve consistent and business-driven change, configuration, and release management as well as enforceable regulatory compliance. Automate!Change includes several distinguishing features.

- **Enforced Workflow.** Automate!Change allows administrators to define fully customized and reusable migration workflow templates—one for each standard change management process. Each template specifies the workflow steps that Automate!Change performs during workflow execution. These steps include automated execution of the administration utilities as well as approval steps, notifications, command line executions, file transfers, and database updates. The migration workflow is automatically configured to the PeopleSoft patch files, so objects and files are automatically associated with the appropriate workflow steps.
- **Advanced Authorizations and Approvals.** Automate!Change includes an

INTEGRATED WITH

PEOPLESOFT ENTERPRISE

Through the Oracle PartnerNetwork Application Integration **Architecture** for Partners Initiative, partners with validated integrations are able to provide customers with standards-based product integrations, tested and validated by Oracle. Customers benefit from improved risk management and smoother upgrade capability, leading to a lower total cost of ownership and greater overall satisfaction.

Availability

sales@beaconservices.com

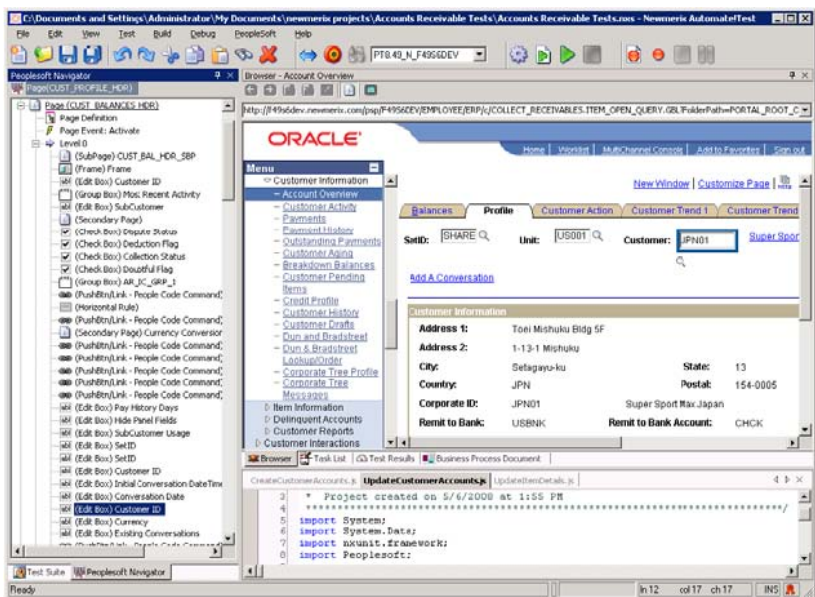
additional layer of security on top of PeopleSoft and file system security to restrict the execution of environment-specific migration workflow steps to specific users. Additionally, the appropriate individual or group approvals must be granted before a migration may proceed. Authorized actions and approvals can only be performed by users who have been authenticated via login credentials by the operating system. All approvals and changes in authority are recorded for auditing.

Support

Newmerixsupport@beaconservices.com

- **Impact Analysis.** Performing a manual impact analysis for a patch or set of enhancements requires analyzing a PeopleSoft Compare report—a document that can be hundreds of pages long. Automate!Change allows you to view source and target environment lists of migration-related database and file objects concurrently, simplifying the task of merging objects into an environment. All points of conflict between the source and target environments are identified and highlighted. For file objects (e.g., SQR, nVision, and COBOL), users can compare and easily consolidate content from differing file object versions, which helps preserve the customizations when patch updates are applied.
- **Security Features.** Automate!Change enables the administrator to leverage existing security measures when implementing a complete security solution for change management. Automate!Change uses the same LDAP methods as PeopleSoft to authenticate users. Only authenticated users can execute steps in the migration workflow and participate in approvals.
- **Object Locking.** Automate!Change enforces a planned upgrade sequence for application changes, thereby preserving the integrity of the associated objects and files. Automate!Change users and PeopleSoft developers can work collaboratively, knowing that locked objects will be safeguarded from unintended updates. Enforcing locks against all objects and files associated with a workflow ensures that the objects and files stay synchronized throughout the migration process.
- **Comprehensive Reporting.** Automate!Change automatically captures information about every migration action, including who performed each step, when it occurred, and what was changed. Comprehensive reports are included to enable audit changes and approvals. This functionality provides required compliance capabilities and allows stakeholders to retrieve specific information that they need to do their work.
- **Web Console.** Automate!Change integrates with Automate!Control to provide a comprehensive Web portal for the change management process. Through the Web interface, users can view migration status, perform approvals, and generate audit reports.

- **Integrated Development Environment.** Automate!Test provides an integrated development environment to create, edit, and run test scripts in one interface, reducing the time it takes to develop test scripts.
- **Programmatic Test Script Execution.** This capability enables testers to run a large number of tests in batch mode or on a schedule, or run the application without the overhead of the user interface.
- **Test Data Loading.** Automate!Test's data loading capabilities enable testers to quickly create, edit, manage, and load data from an array of a data sources so they can efficiently iterate through multiple test script development cycles.
- **Test Result Reporting.** Automate!Test's reporting capabilities show the results of a test replay session. Reports help identify which tests passed or failed and determine the type and location of failures. Test results can be published to a shared central repository where the results can be viewed by other users in Automate!Test or through the Automate!Control Web console.



Automate!Test's PeopleSoft Navigator automatically links fields on a page to underlying metadata

Newmerix Automate!Control integrates with Automate!Test and Automate!Change to provide an overarching command center. From this command center, users can manage the entire lifecycle, from the request stage through deployment and training.

Environment

Newmerix Environment

Automate! for PeopleSoft 3.0 (modules integrated with PeopleSoft Enterprise include Automate!Test 2.9 and Automate!Change 4.1)

Oracle Environment

PeopleSoft Enterprise 9.0

PeopleTools 8.49

For additional information about partnering with Oracle, please contact opninfo_us@oracle.com or visit www.partners.oracle.com.

Oracle is a registered trademark of Oracle Corporation and/or its affiliates. Other names may be trademarks of their respective owners.