

# GLOBAL SOFTWARE, INC.

## Spreadsheet Server Validated Integration with Oracle E-Business Suite 12.2



*The #1 Provider of Microsoft Excel-Based Automation Solutions*

*Spreadsheet Server is an innovative Microsoft Excel add-in providing access to “live” Oracle E-Business Suite data within Excel with the full ability to drill down to supporting details.*

3201 Beechleaf Court  
Suite 170  
Raleigh, NC 27604  
Tel.: +1.800.849.7500  
Fax: +1.919.876.8205  
[globalsoftwareinc.com](http://globalsoftwareinc.com)

### Company Overview

Building on more than four decades of a customer-centric philosophy, award-winning customer service, and leading-edge technology built on the latest development platforms, Global Software, Inc. has established itself as the #1 provider of Microsoft Excel-based automation tools for more than 50 leading enterprise resource planning (ERP) systems in the world today including Oracle ERP applications, Oracle’s JD Edwards solutions, SAP products, and many more.

Established in 1973, Global Software, Inc. is a privately held software company with our worldwide corporate headquarters in Raleigh, North Carolina.

### Integration Overview

Spreadsheet Server version 14 is an innovative Microsoft Excel add-in that allows users to access “live” Oracle E-Business Suite 12.2 data within Excel while maintaining the full ability to drill down to supporting details. Spreadsheet Server enables users to leverage the familiarity of Excel as a reporting and analysis tool while providing up-to-the-minute dynamic data. Designed as a reporting automation tool, Spreadsheet Server enables a one-way flow of desired data. This read-only solution alleviates IT’s concerns over data integrity and security of the underlying database. Built on a level of security defined in Oracle E-Business Suite, Spreadsheet Server enforces segment and ledger security based on defined responsibilities of the Oracle E-Business Suite user.

Features offered by the integration include:

- Time savings
- Increased data integrity
- Ability to leverage the Excel environment
- Drill-down capabilities



### Validated Integration

#### Oracle E-Business Suite

**Oracle Validated Integration gives customers confidence that a partner’s integration is functionally sound and performs as designed. This can help customers to reduce deployment risk, lower total cost of ownership, and improve the user experience related to the partner’s integrated offering.**

## Availability

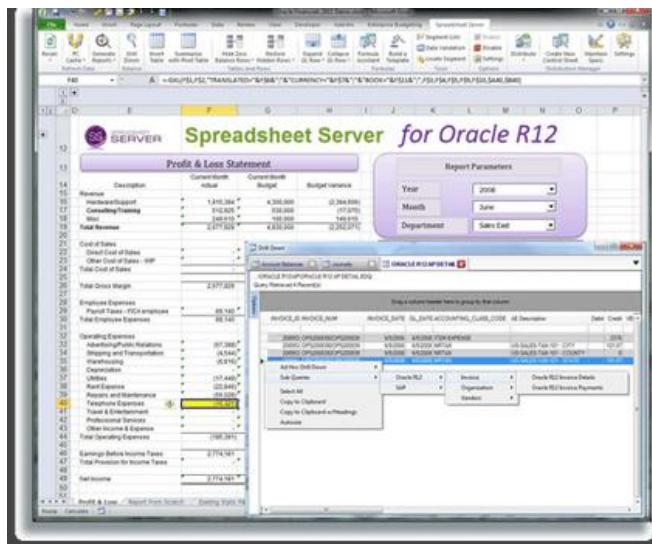
United States  
Tel.: +1.800.326.3444  
United Kingdom  
Tel.: +44.203.102.7655

## Support

Tel.: +1 800.849.7500  
[helpdesk@globalsoftwareinc.com](mailto:helpdesk@globalsoftwareinc.com)  
[globalsoftwareinc.com](http://globalsoftwareinc.com)

## Integration Details

The key is to keep it simple. Spreadsheet Server's easy-to-use and intuitive nature make it the tool of choice. Users of Spreadsheet Server can simply open a spreadsheet and watch the cells of their spreadsheet populate with dynamic financial balances. With integrated security following the Oracle E-Business Suite user responsibilities, reporting is simple, secure, and accurate. The unique drill-down capability takes the tool to a new level of detail by allowing individual balances to be analyzed. With customization the entire database of information is available to your Excel environment. Calculations are live and financial closing times are cut significantly. Ad hoc reporting based on your individual ledgers and Oracle E-Business Suite-defined segments leaves behind configuration issues and allows analysts to focus on business.



With Spreadsheet Server you can publish any report from executive-quality to fully customizable ad hoc Oracle E-Business Suite 12.2 reports within Excel.

## Environment

### Global Software Environment

Spreadsheet Server, Version 14

### Oracle Environment

Oracle E-Business Suite 12.2 (Oracle General Ledger)

Oracle Database 11g Release 2

Oracle WebLogic Server 11g Release 1

Copyright © 2014, Oracle and/or its affiliates. All rights reserved. Oracle and Java are registered trademarks of Oracle and/or its affiliates. Other names may be trademarks of their respective owners.

This document is provided for information purposes only, and the contents hereof are subject to change without notice. This document is not warranted to be error-free, nor subject to any other warranties or conditions, whether expressed orally or implied in law, including implied warranties and conditions of merchantability or fitness for a particular purpose. We specifically disclaim any liability with respect to this document, and no contractual obligations are formed either directly or indirectly by this document. This document may not be reproduced or transmitted in any form or by any means, electronic or mechanical, for any purpose, without our prior written permission.