

LATIS TECHNOLOGIES

LatisVue 1.0 Validated Integration with Oracle's AutoVue 3D Professional Advanced 20.0



4000 Legato Road
Suite 1100
Fairfax, VA 22033
Tel.: +1.703.349.5733
Toll-Free: 1.877.LATISTECH
Fax: +1.703.656.4779
latistech.com

Dynamic Visualization of your Product Configurations

LatisVue dynamically generates visual representations of 3D and 2D CAD diagrams for product configurations right inside your runtime Oracle Configurator window.

Company Overview

Latis Technologies is an Oracle PartnerNetwork (OPN) Gold-level partner that focuses on Oracle E-Business Suite implementations for companies that have an Oracle Configure to Order business process. Every Oracle Configure to Order process is unique and Latis uses years of experience and expertise to help provide an optimized Oracle Configure to Order implementation.

Integration Overview

LatisVue 1.0 integrates with Oracle's AutoVue 3D Professional Advanced 20.0 Enterprise Visualization solution and provides dynamic visual representations of the configuration as the user configures the product inside the Oracle Configurator 12.1 window. Leveraging Oracle's AutoVue solutions, LatisVue dynamically generates visual 3D and 2D representations of designs. These designs can be viewed and manipulated inside the Oracle Configurator window.

Key benefits of this integration include:

- Improved order lead times by instant generation of design diagrams for configurations
- Cost savings by freeing up resources needed to generate visual representations of design diagrams for customer configurations
- Enhanced customer experience for Oracle Configurator end users

Integration Details

This integration is achieved by the LatisVue applet, which extends the Oracle AutoVue applet to provide interface APIs that will enable Oracle Configurator to dynamically manipulate the design displayed in the AutoVue window and generate the specific configuration diagram.

Oracle Configurator models are designed to store Oracle AutoVue IDs for the various configurable components. An extension is fired to call the LatisVue APIs that will set the visibility and the properties of the configured product's 3D and 2D CAD images.



Validated Integration

Oracle E-Business Suite

Through the Oracle PartnerNetwork, partners with validated integrations are able to provide customers with standards-based product integrations, tested and validated by Oracle. Customers benefit from improved risk management and smoother upgrade capability, leading to a lower total cost of ownership and greater overall satisfaction.

Availability

North America:

Tel.: +1.703.349.5733

Toll-Free: 1.877.LATISTECH

Fax: : +1.703.656.4779

latistech.com

India:

214, NSIC Software

Technology Park

Guindy Industrial Estate

Chennai, TN 600032

India

Tel.: +91.44.43534507

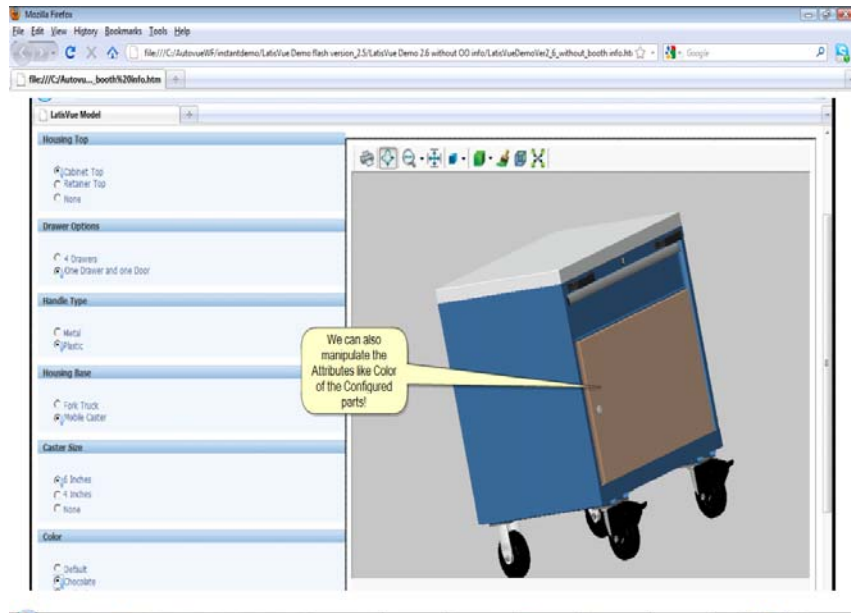
Fax:: +91.44.43534407

latistech.com

Support

Tel.: +1.877.LATISTECH,

Option 2



LatisVue model

Environment

Latis Technologies Environment

LatisVue 1.0

Oracle Environment

Oracle Configurator Release 12.1

Oracle's AutoVue 2D Professional 20.0

Oracle's AutoVue 3D Professional Advanced 20.0

Oracle Database 11g

Oracle Application Server 10g

For additional information about partnering with Oracle, please contact opninfo_us@oracle.com or visit partners.oracle.com

Oracle is a registered trademark of Oracle Corporation and/or its affiliates. Other names may be trademarks of their respective owners.