

Oracle Yard Management

Extending the Oracle Value Chain Execution Solution

ORACLE[®] 12 E-BUSINESS SUITE

ORACLE YARD MANAGEMENT

KEY FEATURES

- Multi-facility yard operations
- Dock scheduling
- Mobile Yard Supervisor on your phone
- Equipment check-in and check-out
- Equipment sealing and unsealing
- Real-time trailer management
- RFID/RTLS and Mobile RF enabled
- Seamless integration with Oracle Inventory Management, Oracle Warehouse Management and Oracle Transportation Management

KEY BENEFITS

- Increased throughput and operational efficiency of yard and serviced facilities
- Improved visibility of trailers and contents across facilities and the enterprise
- Reduced costs associated with stock-outs and detention/demurrage
- Efficient dock operations with timely loading and unloading of trailers
- Improved fulfillment with integrated warehousing and transportation

Extend your supply chain visibility into yard operations – the missing link between the visibility and control provided by transportation and warehouse management systems. Part of the Oracle E-Business Suite Supply Chain Management family of applications, Oracle Yard Management manages and tracks the flow of trailers and their contents into, within, and out of the yards of facilities such as distribution centers, production campuses, or transportation terminals.

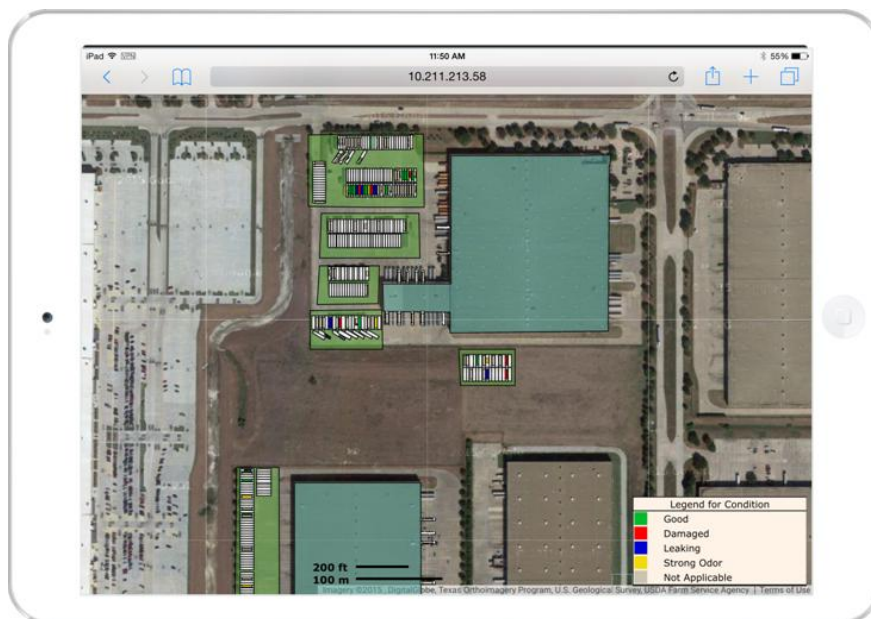


Figure 1: Graphical Yard Workbench

Key Features at a Glance

To gain a competitive advantage, companies must optimize inventory management, lower inventory levels, shorten order cycle times and provide better fill rates. Accomplishing this requires maximizing inventory flow not only inside the facility, but also outside in the yard. To ensure smooth yard operations, it is essential to have real-time location and status information about trailers, parking spots, dock doors, and personnel. Manual processes lend themselves to data entry errors and tend to be slow. Coordinating this level of activity is not easy and requires a dedicated system approach. Oracle Yard Management helps to manage the resources and inventory flow within the yard.

ORACLE YARD MANAGEMENT

RELATED PRODUCTS

Oracle Yard Management expands the Oracle Value Chain Execution footprint and complements the following products:

- Oracle Warehouse Management
- Oracle Inventory Management
- Oracle Mobile Supply Chain Applications
- Oracle Order Management
- Oracle Transportation Management

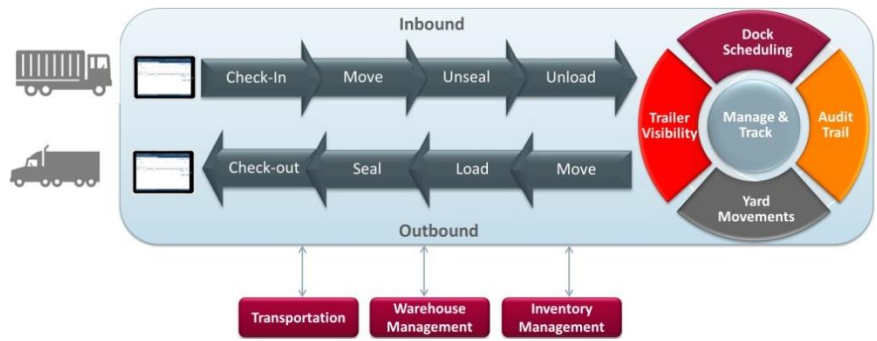


Figure 2: Key Features of Oracle Yard Management

- **Multi-facility and multi-enterprise** – Trailer management and visibility across facilities and the enterprise, with the ability to have one yard service multiple facilities.
- **Mobile access from your smartphone** – Monitor yard activity, space availability and and perform check-in and check-out transactions using Mobile Yard Supervisor.
- **Collaborative dock scheduling** – Schedule dock appointments directly within Oracle Yard Management or use shipper/carrier appointments collaboratively scheduled in Oracle Inventory Management, Oracle Warehouse Management or Oracle Transportation Management.
- **Equipment check-in and check-out** – Check-in and check-out yard equipment and capture relevant information including equipment condition/weight/volume, carrier, driver, document reference and much more.
- **Equipment sealing and unsealing** – Capture multiple seals per equipment and perform sealing and unsealing operation using the mobile RF device.
- **Real-time visibility of yard equipment and the contents** – Extend supply chain visibility into the yard and quickly locate equipment and their contents.
- **RFID/RTLS and Mobile RF enabled** – Use mobile RF devices or integrate with RFID/RTLS solutions.
- **Seamless integration with Oracle Inventory Management, Oracle Warehouse Management and Oracle Transportation Management** – Oracle Yard Management extends Oracle's Value Chain Execution solution, and optimizes end-to-end business processes by having yard integrated with warehousing and transportation systems.

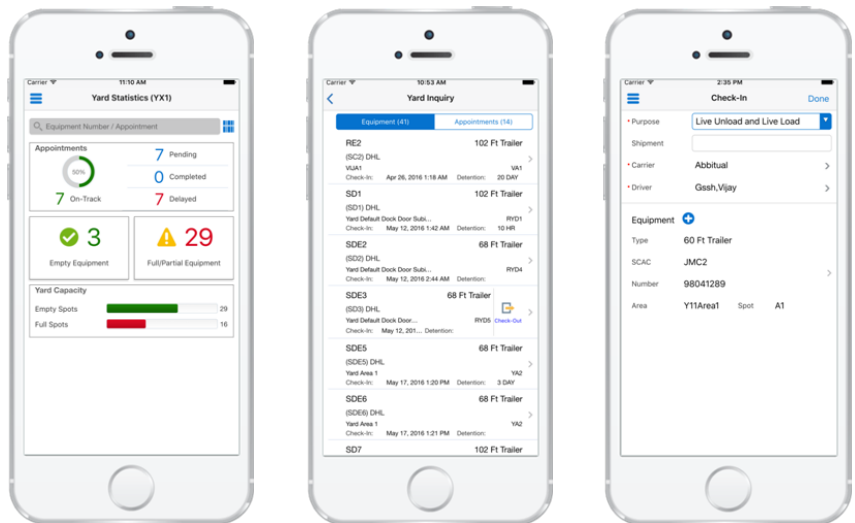


Figure 3: Mobile Yard Supervisor on a smartphone

Key Benefits at a Glance

Trailer yards can be supply chain black holes due to lack of visibility provided by transportation and warehouse management systems. Yard management systems eliminate this black hole, and shed light on trailer and shipment location. Oracle Yard Management enables manufacturing, distribution and asset-intensive organizations to improve their order fulfillment and logistics operations by extending supply chain visibility and process automation into the yard, which translates to better productivity and lower costs. Oracle Yard Management is scalable, and is designed for use by companies with larger facilities using Oracle Warehouse Management as well as smaller facilities using Oracle Inventory Management.

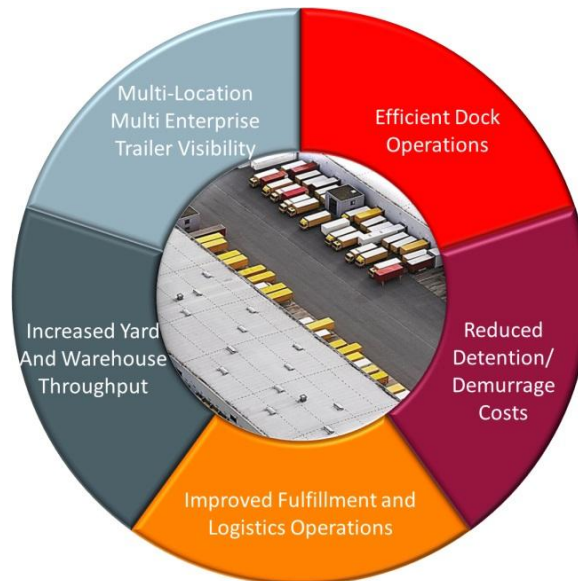


Figure 4: Key Benefits with Oracle Yard Management




- Trailer management and visibility across facilities and the enterprise.
- Efficient dock operations with collaborative dock scheduling.
- Reduced costs associated with stock-outs, detention and demurrage.
- Improved fulfillment and logistics with integrated warehousing and transportation.
- Increased throughput for yard and serviced facilities.

CONTACT US

For more information about Oracle Yard Management, visit oracle.com or call +1.800.ORACLE1 to speak to an Oracle representative.

ORACLE

CONNECT WITH US

-  blogs.oracle.com/oracle
-  facebook.com/oracle
-  twitter.com/oracle
-  oracle.com

Hardware and Software, Engineered to Work Together

Copyright © 2016, Oracle and/or its affiliates. All rights reserved. This document is provided for information purposes only, and the contents hereof are subject to change without notice. This document is not warranted to be error-free, nor subject to any other warranties or conditions, whether expressed orally or implied in law, including implied warranties and conditions of merchantability or fitness for a particular purpose. We specifically disclaim any liability with respect to this document, and no contractual obligations are formed either directly or indirectly by this document. This document may not be reproduced or transmitted in any form or by any means, electronic or mechanical, for any purpose, without our prior written permission.

Oracle and Java are registered trademarks of Oracle and/or its affiliates. Other names may be trademarks of their respective owners.

Intel and Intel Xeon are trademarks or registered trademarks of Intel Corporation. All SPARC trademarks are used under license and are trademarks or registered trademarks of SPARC International, Inc. AMD, Opteron, the AMD logo, and the AMD Opteron logo are trademarks or registered trademarks of Advanced Micro Devices. UNIX is a registered trademark of The Open Group. 0716