

November 14, 2016

Announcing JD Edwards UX One, Search, JD Edwards EnterpriseOne Tools 9.2 Update 1, and Enhanced Availability on the Oracle Public Cloud

JD Edwards today announces a significant product release to empower our customers on their journey to becoming digital enterprises. These enhancements provide companies with deployment choices, industry-focused applications, and transformative solutions to innovate in the digital economy and to run their business their way.

Oracle is announcing new application and tools features for a major customer experience upgrade for EnterpriseOne applications. Available today for EnterpriseOne are JD Edwards UX One, EnterpriseOne Search, Tools 9.2 Update 1, and an updated Release 9.2 Trial Edition on the Oracle Public Cloud. Also announced today are EnterpriseOne Mobile applications enhancements, new Sales Order Management Order Guides, and Health and Safety updates.

JD Edwards UX One

JD Edwards UX One provides a major advancement in the JD Edwards EnterpriseOne user experience. UX One increases user productivity by leveraging the Alert, Analyze, Act design principle. Today we are announcing the availability of thirty-two UX One roles. As a result, users are now able to spend less time searching through rows of data and more time analyzing information and managing exceptions, making JD Edwards EnterpriseOne more efficient for existing users and extremely appealing to new users.

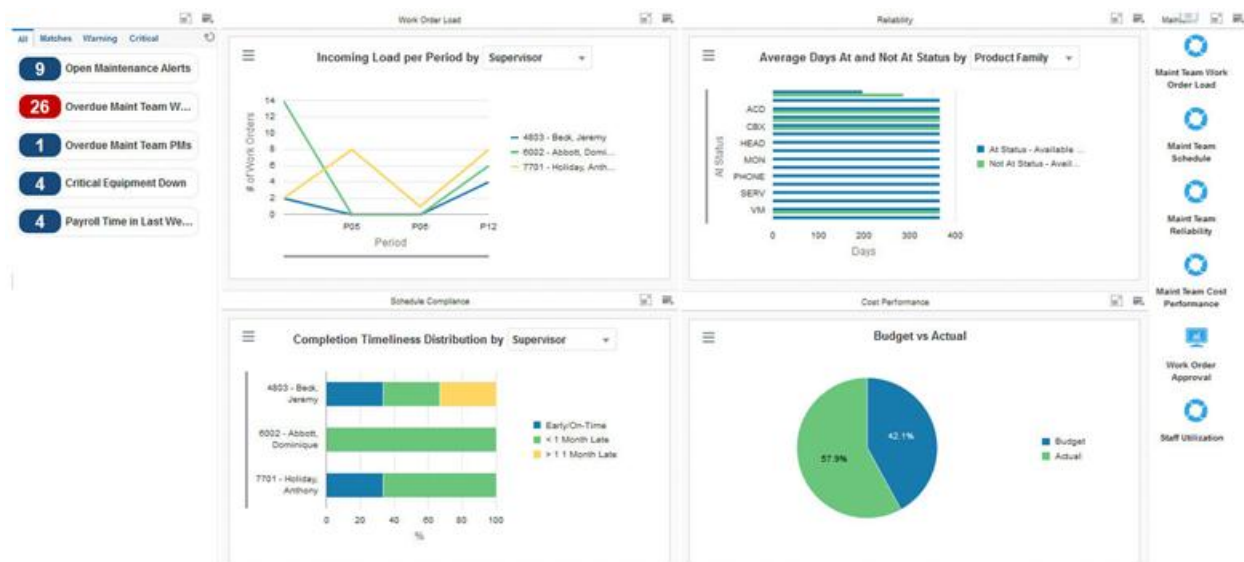
UX One includes both a set of role-based application content that customers can utilize out of the box as well as tools that can be used to create, configure, and personalize your solution to further optimize a user's interaction with JD Edwards EnterpriseOne. UX One role-based application content uses Landing Pages, Watchlists, Analytics, CafeOne Layouts, List View grid formats, Springboards, Form Personalization, and modern UI controls that visualize data in

intuitive graphical formats such as maps, Gantt charts, and hierarchies to create a rich and intuitive user experience.

The JD Edwards landing page example for the Maintenance Manager role shown below illustrates the visual appeal of UX One, highlighting exceptions and giving the manager a starting point to analyze and act immediately. The example highlights the following elements:

- Watchlists that enable the manager to define information for alerts.
- Data visualizations where the manager can analyze data in charts that are more intuitive and characteristic in nature.
- Springboards to quickly launch tasks such as EnterpriseOne applications, batch programs, and ADF applications.
- A new Personal Forms feature that enables users to personalize application forms based on requirements and roles to optimize the user experience.

More videos, examples, tutorials and instructions to immediately start using UX One can be found on [LearnJDE](#).



UX One Foundation

We are responding to the demands of our customers with the delivery today of the UX One Foundation. In addition to the thirty-two UX One roles, UX One Foundation is available today with Tools 9.2 Update 1 (9.2.1). Key UX One Foundation features delivered with Tools Release 9.2.1 include:

- Personal Forms empower businesses to optimize JD Edwards applications to display relevant information based on roles, industry, and individual preferences without requiring IT or a developer to customize the application.
- Media Object Viewer introduces a new easy-to-use interface that simplifies the process of working with Media Objects.
- Springboards allow users to launch/switch between applications while maintaining their state and without having to navigate through the menu tree.
- External Forms for communication between applications and UX One components such as the Application Development Framework (ADF) application and JET Apps in

EnterpriseOne Pages or CafeOne.

- One View Watchlists support for Data Browser.
- Application Interface Services (AIS) enhancements for as-if currency, aggregation grouping by date, watchlists as a service, and query improvement.

JD Edwards EnterpriseOne Search

JD Edwards is announcing “Search”, the preferred way for users to interact with software systems, from navigation to retrieval of data to performing actions. Search is a major customer-requested productivity improvement enabling users to easily find and act on information, especially when related data is spread over multiple applications. Delivered as an EnterpriseOne Page and leveraging the power of Application Interface Services (AIS) Server, the JD Edwards EnterpriseOne Search feature is a keyword-driven “search as you type” feature over JD Edwards EnterpriseOne transactional and master data. It is preconfigured for Address Book, Item Master, and Tasks but fully extensible and customizable by the citizen developer community to other search areas.

JD Edwards EnterpriseOne Mobile Enterprise Applications

JD Edwards continues to improve its mobile solutions as demand for mobile capabilities continues to grow. In this release, JD Edwards has improved the user experience in existing applications by including a proximity search and by enabling barcode scanning.

- **Proximity Search**

JD Edwards now enables users to leverage geo-location or physical address as filter criteria within a search, allowing users to determine their proximity to one or more things. Proximity search has initially been enabled in the JD Edwards Contact Customer mobile phone and tablet app where results are displayed on a map.

- **Barcode Scanning**

Barcode scanning reduces the need to manually enter information, making users more efficient and less prone to errors. Existing mobile applications have been enhanced to allow barcodes to be scanned via the device camera or through a peripheral device. Mobile Applications enhancements are within Sales Order Management, Inventory, Capital Asset Management, and Service Management. Fields that can now use barcode scanning are Item Number, Lot Number, Location, License Plate, Asset, and Work Order.

Sales Order Entry Order Guides

Order Guides is a new feature of Sales Order Entry that allows customer service representatives to more quickly create orders for customers they interact with regularly and for items that are commonly ordered. The ability to create templates of items by customer and to associate customers with customer service representatives provides easy access to this information during sales order entry. In addition, within the Order Guides interface, relevant background information about the customer is provided including credit history and previous ordering patterns to ensure the customer’s needs are filled.

Health and Safety

Health and Safety Incident Management has been enhanced to include additional flexibility for filtering incidents by establishment, updated notifications to include incident date and time, and expanded color coding for incident severity.

Revenue Recognition

To support upcoming global accounting standards for the recognition of revenue, enhancements have been made to EnterpriseOne releases 9.1 and 9.2 and World releases A9.3.1 and A9.4 in Project Costing, Contract and Service Billing, Sales Order Processing and Accounts Receivable. In combination, these enhancements provide a simple yet comprehensive solution for managing the recognition of revenue in a complex business environment.

Legislative Updates

- EU - SEPA Enhanced Direct Debit [SDD] and SEPA Credit Transfer provide the ability to create XML files.
- Enhanced EU - SEPA Credit Transfer (SCT) and SEPA Direct Debit (SDD) error checking validates all the information required to process SEPA payments.
- Czech - The Czech Ministry of Finance introduced a new VAT summary control report.
- France - Electronic Audit File (FEC – Fichier d'Ecritures Comptables) updates.
- Italy - Italian Polyvalent Declaration Changes of 2016 changes the Black List Countries Transaction List reporting.
- Brazil - Constitutional Amendment 87 changes in Technical Note 2015-003 and 2015-003 v 1.10 establish new fiscal rules, new validation rules, and layout modifications.
- Brazil - SPED Contabil - Layout 4 has new reporting requirements.

Tools Release 9.2 Update 1

JD Edwards EnterpriseOne Tools Release 9.2 Update 1 (9.2.1) provides transformational capabilities for customers to address the demands of the digital economy and enhancements to lower the total cost of ownership while providing customers with choice and control of their JD Edwards solution. Key features delivered with Tools Release 9.2.1 include:

- For IoT Orchestrator Studio, orchestration components are stored as User Defined Objects (UDO) in EnterpriseOne. Each orchestration component type is managed as a separate UDO type in JD Edwards EnterpriseOne, which simplifies security and lifecycle management of orchestration.
- Automation and simplification are fundamental principles for JD Edwards low total cost of ownership. To provide additional automation, key Server Manager functionality can now be accessed through REST APIs. These REST APIs are used to automate provisioning of JD Edwards servers, monitoring activity, and managing JD Edwards environments. Additionally, customers leverage this capability to develop mobile applications to manage JD Edwards EnterpriseOne.
- JD Edwards UBE output, media objects, and development objects (such as business functions and business services) are stored in the database. By storing all objects in the database, common administration tasks such as system-wide backups, cloning environments, and object management have been simplified.
- Modal forms and Hover forms have also been enhanced to enable EnterpriseOne developers to create forms that are more dynamic and interactive.
- JD Edwards EnterpriseOne 9.2.1 continues to support our open platform operational delivery model with several new Platform Certifications. These certifications enable continued operations on the customer's platform of choice.
 - Application Management Suite for JD Edwards EnterpriseOne (AMS4JDE) with Oracle Enterprise Manager 13.2
 - IBM WebSphere Application Server 9

- IBM AIX 7.2
- Oracle JavaScript Extension Toolkit (JET) 2.0
- Microsoft Office 2016
- Certifications for JD Edwards EnterpriseOne are on [Certify](#) on [My Oracle Support](#).
- An Updated Platform Statement of Direction (SOD) document for 9.2 is on [My Oracle Support](#) (Document ID [749393.1](#))

JD Edwards EnterpriseOne Release 9.2 Available on the Oracle Cloud Marketplace and Oracle Compute Cloud Service

The JD Edwards EnterpriseOne Trial Edition enables customers to explore new functionality in JD Edwards EnterpriseOne Application Release 9.2. Trial Edition has been updated to include UX One content and foundation, all current application enhancements, and Tools Release 9.2.1. Oracle previously [announced](#) the availability of JD Edwards EnterpriseOne on the Oracle Cloud Marketplace.

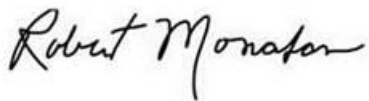
Access the images for JD Edwards EnterpriseOne cloud deployments on the [Oracle Cloud Marketplace](#).

Supporting Resources

- [Oracle's JD Edwards EnterpriseOne](#)
- [LearnJDE.com](#)

Today's announcements demonstrate the investment Oracle is making in the JD Edwards products and our commitment to our customers to enable their journey to a digital enterprise.

Sincerely,



Robert Monahan
Vice President, Product Management
Oracle's JD Edwards