

JD Edwards EnterpriseOne In-Memory Planning Advisor for Oracle Engineered Systems

ORACLE

**JD EDWARDS
ENTERPRISEONE**

A comprehensive, intuitive view of complex supply and demand data

KEY FEATURES

- Gain insight into large volumes of data in real-time.
- View supply and demand information for each planner's or buyer's items.
- See real-time effects on supply and demand when making modifications to supply to meet future demand.
- See real-time effects on Ending Available, Available to Promise, and Cumulative Available to Promise when making modifications to supply.
- Perform in-line implementation of the production plan through immediate creation and update of purchase orders, transfer orders, and work orders.
- See critical inventory information, such as on-hand inventory, days of supply until the first receipt of material, and days of supply until the second receipt of material.

KEY BENEFITS

- Provide a single and comprehensive view of planning data to make efficient decisions that ensure you are meeting business goals.
- Help organizations achieve real-time visibility into supply and demand planning.
- Allow material planners and buyers to make better, faster decisions through real-time insight into changes in their supply and demand.

What if your supplier misses a critical delivery date that pushes all orders out a week? Do you still have enough material to make the component in-house? What if a large order is canceled? If the material is available, can you complete other orders sooner? What if a machine on a subassembly line breaks and the necessary parts take three weeks to arrive? Is there enough inventory of the substitute item for that component?

Real-Time Insight into Supply and Demand

Many SKUs and many more components that make up those SKUs require material planners and buyers to search through huge amounts of data to determine if their supply can meet the demand. Oracle's JD Edwards EnterpriseOne In-Memory Planning Advisor solution leverages Oracle Engineered Systems technology of faster database access to read through requirements planning, inventory, sales, manufacturing, and procurement data in real time. Based on this data, it creates a comprehensive, visual, and interactive display of planned and actual supply and demand.

Reacting Quickly to Changes in Supply of Material

In-Memory Planning Advisor consists of two primary components, the Planning Advisor Summary and the Planning Advisor Console, which combine existing requirements planning (MRP/MPS/DRP) functionality with new real-time functionality to provide a comprehensive, graphical, and interactive view of supply and demand data, enabling more efficient replenishment planning and execution.

In-Memory Planning Advisor Summary

The Planning Advisor Summary presents requirements planning messages that are prioritized and summarized according to user preferences, and provides alerts every time that action is required within the established lead time. For items selected from the message summary, users can see, at a glance, their current inventory condition with graphical indicators for on-hand inventory, days until first receipt, and days until second receipt.

FEATURE/FUNCTION HIGHLIGHTS

- Graphical summary of messages generated by requirements planning (MRP/MPS/DRP) based on user-defined thresholds and priorities
- Item summary of current inventory condition with graphical on-hand and days of supply alerts
- Lead-time alerts
- Single, comprehensive, interactive, real-time presentation of actual and planned supply and demand data
- Toggle between adjusted (planned) and unadjusted (actual) views
- User-friendly supporting graphics
- Clear presentation of the effects of supply changes before saving or implementing the plan
- Ability to restore original plan with a single click (before saving or implementing the plan)
- Ability to easily freeze (or unfreeze) individual or multiple orders
- Critical component days of supply and ending available alerts
- Visibility of inventory available in other branches
- Ability to create or view text or media object attachments

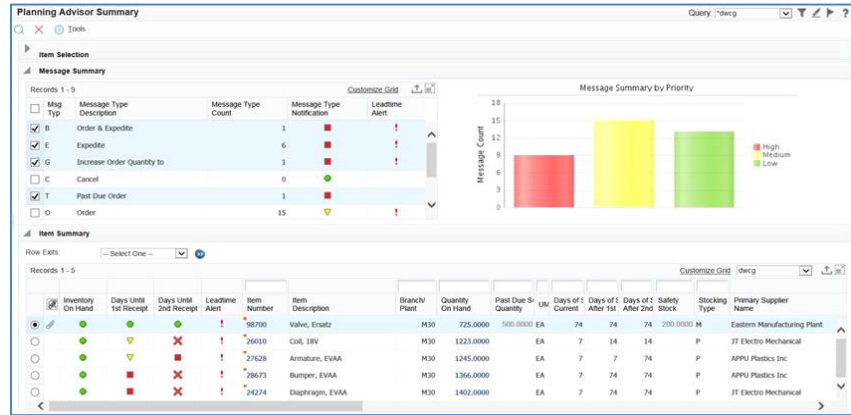


Figure 1. Planning Advisor Summary

In-Memory Planning Advisor Console

The Planning Advisor Console can be accessed directly or by drilling down from the Planning Advisor Summary. Action messages (if any) are presented in the context of an interactive, real-time supply/demand detail table with supporting charts. Users can modify recommended supply dates and quantities or create new planned supply orders within the Planning Advisor Console with real-time graphical views of the effects of their changes prior to saving and/or implementing them. Until the changes are saved, the original supply condition can easily be restored with the click of a button. For manufactured items, ending available and days of supply alerts are provided for critical components, again in real time as changes are made to the parent item's production plan.

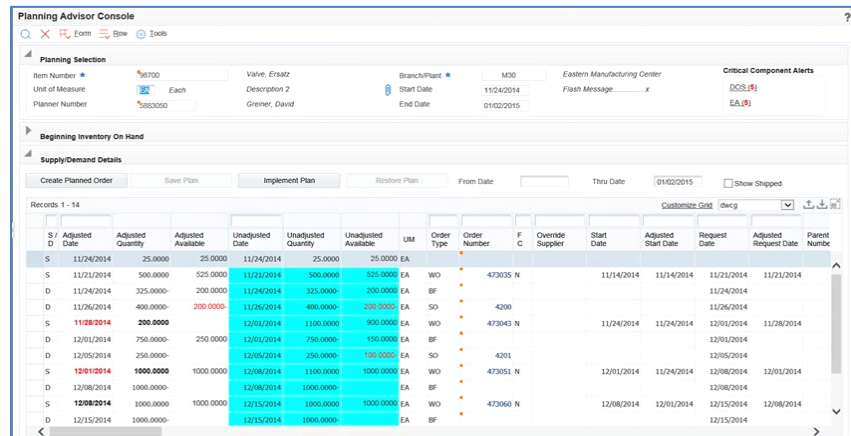


Figure 2. Planning Advisor Console

The JD Edwards EnterpriseOne In-Memory Planning Advisor is an innovative real-time solution that supports faster decision-making using visual displays of large volumes of data. The system leverages the existing supply and demand, time series, and MRP message information, and charts the data to provide planners and buyers a comprehensive view of the production plan.



Figure 3. Supply/Demand Charts

Solution Integration

This module is designed to be integrated with the following products across your operations using common tools and a Pure Internet Architecture:

- JD Edwards EnterpriseOne Requirements Management
 - Material Resource Planning (MRP)
 - Forecasting
- JD Edwards EnterpriseOne Manufacturing Management
 - Shop Floor Management
 - Product Data Management
- JD Edwards EnterpriseOne Procurement
 - Purchasing
 - Receipts
- JD Edwards EnterpriseOne Inventory Management
 - Item Master
 - Item Availability
 - Lot Processing
- JD Edwards EnterpriseOne Sales Order Management
 - Sales Orders
 - Transfer Orders

Designed to Run on Oracle Engineered Systems





Oracle Engineered Systems provide the foundation for a generational evolution for JD Edwards EnterpriseOne on a number of levels. In-Memory applications offer capabilities that were not possible previously. Business users benefit from the extreme performance and agility; new capabilities transform enterprise business processes and accelerate the activities that drive business benefits. Technical staff benefits from simplified architecture, tightly integrated and tested components, and agile application deployment. JD Edwards EnterpriseOne running on Oracle engineered systems is the culmination of Oracle's "Engineered to Work Together" strategy.



CONTACT US

For more information about JD Edwards EnterpriseOne, visit oracle.com or call +1.800.ORACLE1 to speak to an Oracle representative.

CONNECT WITH US

-  blogs.oracle.com/oracle
-  facebook.com/oracle
-  twitter.com/oracle
-  oracle.com

Integrated Cloud Applications & Platform Services

Copyright © 2016, Oracle and/or its affiliates. All rights reserved. This document is provided for information purposes only, and the contents hereof are subject to change without notice. This document is not warranted to be error-free, nor subject to any other warranties or conditions, whether expressed orally or implied in law, including implied warranties and conditions of merchantability or fitness for a particular purpose. We specifically disclaim any liability with respect to this document, and no contractual obligations are formed either directly or indirectly by this document. This document may not be reproduced or transmitted in any form or by any means, electronic or mechanical, for any purpose, without our prior written permission.

Oracle and Java are registered trademarks of Oracle and/or its affiliates. Other names may be trademarks of their respective owners.

Intel and Intel Xeon are trademarks or registered trademarks of Intel Corporation. All SPARC trademarks are used under license and are trademarks or registered trademarks of SPARC International, Inc. AMD, Opteron, the AMD logo, and the AMD Opteron logo are trademarks or registered trademarks of Advanced Micro Devices. UNIX is a registered trademark of The Open Group. 0116

