



JD EDWARDS ENTERPRISEONE USER EXPERIENCE

KEY FEATURES AND BENEFITS

- Highly interactive interface that leverages Dynamic HTML provides immediate feedback to the user.
- EnterpriseOne Pages provide a single user interface that combines visual process maps, complementary web applications, or any general web pages.
- Freeze, unfreeze, hide, and show column personalization allow users to maximize screen space and reduce the need to scroll to see the right data.
- Inline Visual Assist tools are rendered as a pop-up window with the correct value options specific to the open application screen.
- Enhanced Query gives users a quick way to create powerful searches using lists of value ranges or date ranges. Users can interactively design complex queries easily and save favorites for quick access.
- The Menu toolbar is the easiest way to launch applications, access reports, and personalize favorites.
- Drop-down navigation menus replace the left-hand navigation, which frees up 25 percent more workspace.
- Mobile computing is now available on the Apple iPad, and JD Edwards—specific gestures are the simple way to complete tasks anywhere.

User Experience highlights the experiential, effective, meaningful and valuable aspects of human-computer interaction and product ownership, but it also includes a person's perceptions of the practical aspects such as utility, ease of use and efficiency of the system. User experience is subjective in nature, because it is about an individual's feelings and thoughts about the interaction. Users have increasing demands in terms of how they access enterprise applications and their expectations of how these applications should behave. JD Edwards EnterpriseOne has responded to these user demands by delivering innovative technology solutions focused on improving a user's productivity and satisfaction when executing their organization's business processes.

The JD Edwards EnterpriseOne User Interface is designed to make every aspect of JD Edwards EnterpriseOne easier, faster and more efficient for customers, radically transforming their software experience.

User Productivity

Time is money, and a superior user interface makes users more productive by allowing them to perform critical business tasks with less time and effort. The JD Edwards EnterpriseOne User Interface has been crafted with many features that have exactly this in mind.

These features include:

- An Interactive web client interface that provides real-time, immediate feedback to the user.
- Role and User based navigation features including graphical process flows that make it easy for users to identify and execute business processes.
- Intuitive application design that help users optimize their business tasks.
- Incorporation of search technologies to help users quickly find the information they are looking for.

See additional features shown in Figure 1 below:

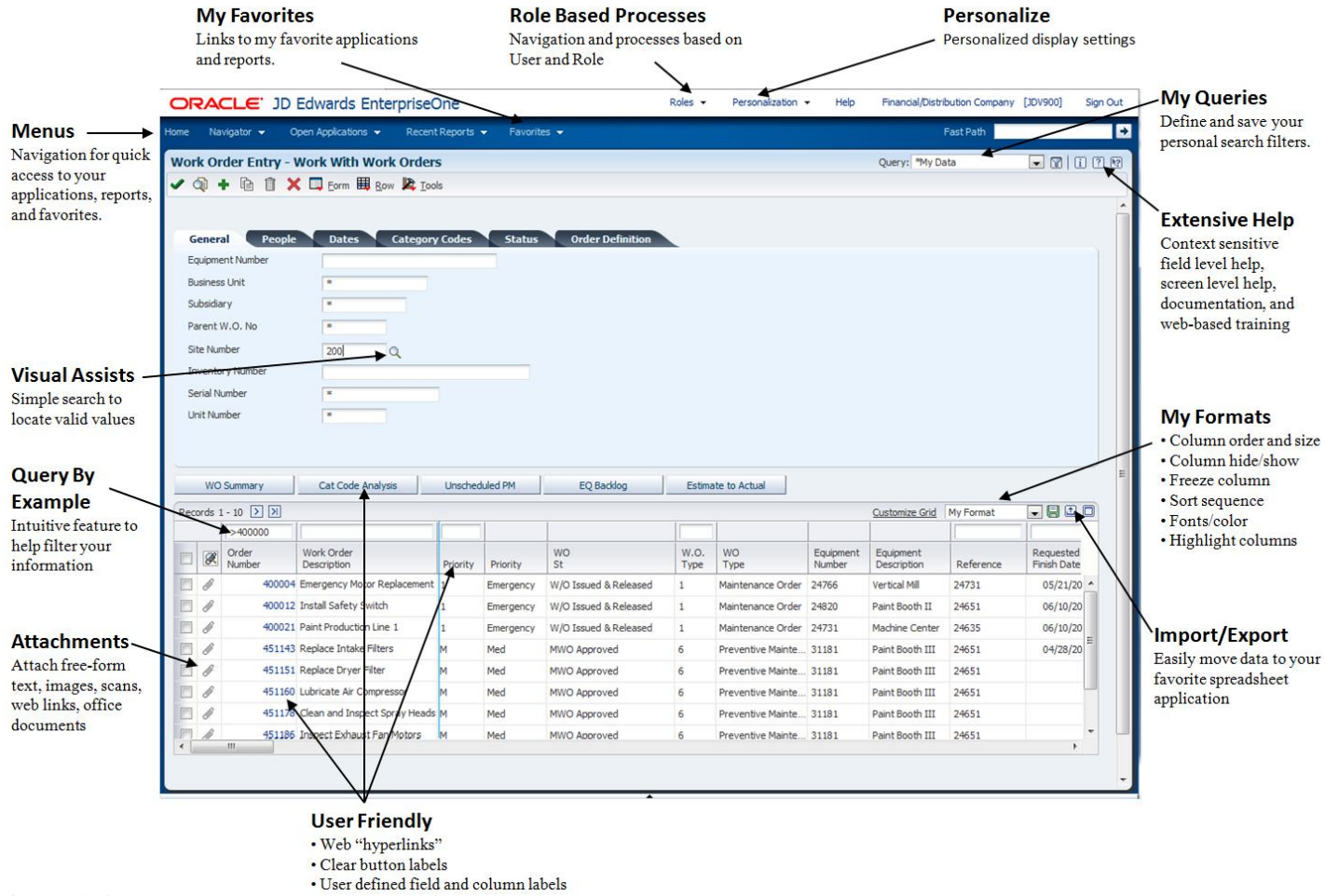


Figure 1. Many of the JD Edwards User Interface Features

Aesthetics

While an application doesn't need an attractive interface for it to do its job, making something look good will make the time users spend using the application more effective.

To provide users with a modern and intuitive user experience JD Edwards EnterpriseOne takes full advantage of a user interface style based on Oracle's extensive user experience research and studies. Not only does this provide an attractive user interface but it also allows for a seamless and consistent experience when using the full Oracle product line.

JD Edwards EnterpriseOne also incorporates many innovative and unique user experience features such as EnterpriseOne Pages and the Carousel. These features allow for attractive graphical representations for business processes and common actions with a focus on minimizing the amount of mouse clicks, travel, and page transitions.

See Figure 2 below for examples of EnterpriseOne Pages and the Carousel.

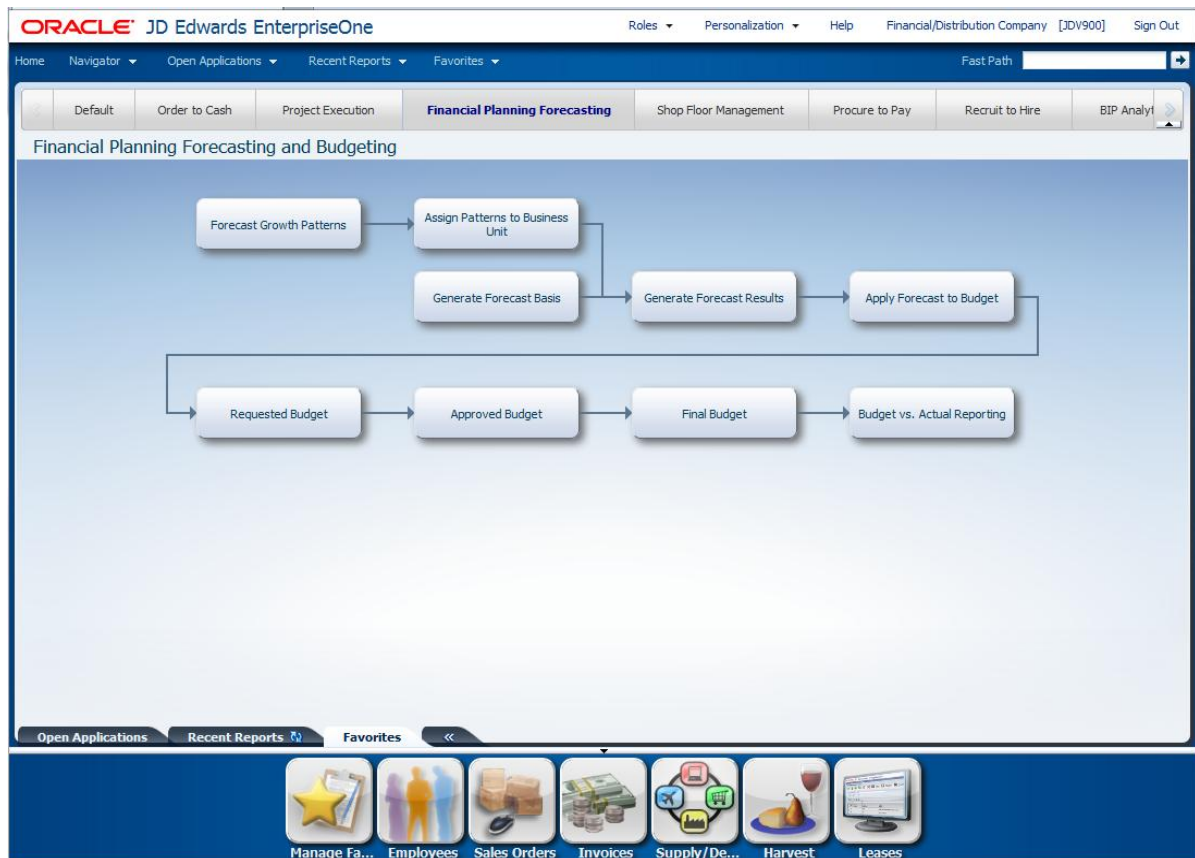


Figure 2. JD Edwards EnterpriseOne Pages and the Carousel

Personalization

Application users are not clones that share the same job roles, responsibilities, and tastes. They are individuals with varying needs and opinions on how they want to interact with software applications. Therefore, it is paramount that the software that they use is flexible enough to allow them to easily access the applications that they work with regularly, filter important information that they are looking for, and configure the interface to display information in the way that they want to see it.

The JD Edwards EnterpriseOne user experience gives the individual user the option to personalize many aspects of the user interface – including:

- Dynamic grid formatting allows to the user to modify their view of grid information through simple drag/drop or mouse click actions.
- The user can easily define and organize their favorite Applications and Reports making it easier for them to perform their common tasks.
- Default queries can be defined and saved per user on any application that performs a find.
- The Carousel allows the user to organize and access many common features like the applications they have open, recent reports they have submitted, and their favorite applications and reports.

Composite Applications

For most companies, JD Edwards EnterpriseOne will not be the only application in use. In fact it is quite common for companies to have business processes that leverage JD Edwards EnterpriseOne applications along with several other applications. In these cases, it is important that the software allows you to bring together the multiple systems into a single, consistent, and unified user interface – in other words a “Composite Application”.

JD Edwards EnterpriseOne has solutions for composite applications whether you need to incorporate JD Edwards EnterpriseOne content into an external applications interface or need to bring web content directly into the JD Edwards EnterpriseOne user interface. For example, using industry standards you can easily expose JD Edwards EnterpriseOne Portlets into external web portals such as Oracle’s Web Center Suite of products.

For the case where users prefer to embed an external web application directly in line with JD Edwards EnterpriseOne applications you can leverage the Related Information Application Framework or EnterpriseOne Pages. These features allow an end user or system administrator to contextually embed any web based application into JD Edwards EnterpriseOne applications with no development or customization work.

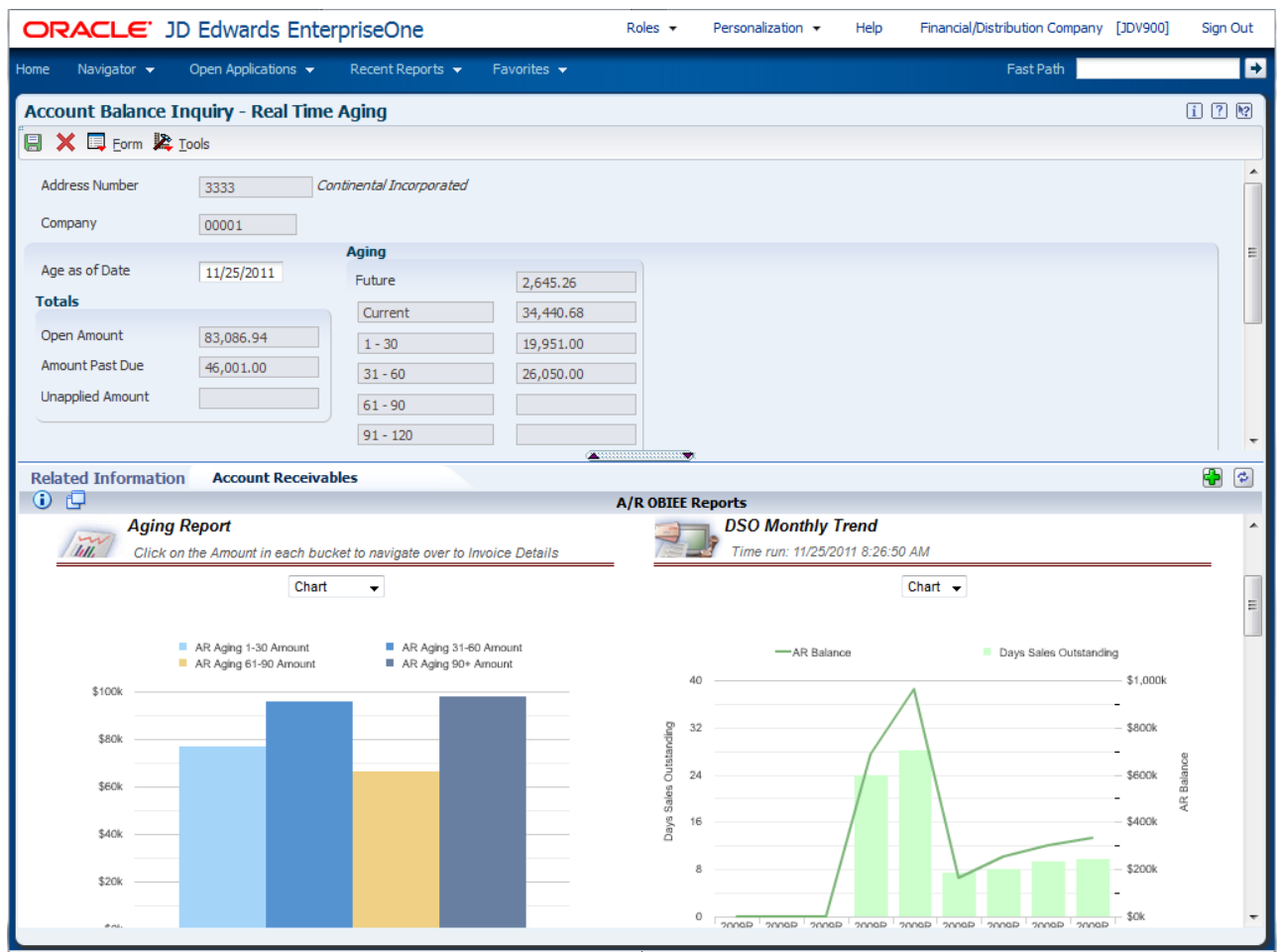


Figure 3. Oracle Business Intelligence embedded within JD Edwards EnterpriseOne using the Related Information Application Framework.

Mobility

The technology choices for users are flourishing not only with highly interactive web browsers but also with the broad introduction of mobile devices such as tablets and smart phones. JD Edwards understands that users are no longer physically bound to the workplace and that business applications need to be available at the point of process – whether it is on the shop floor, at a customer site, or anywhere that a user needs access to critical business information.

To support this new demand, JD Edwards EnterpriseOne has extended our applications to mobile devices. In fact JD Edwards EnterpriseOne was the first Enterprise application suite to offer full support of our applications running on the Apple iPad. Some highlights of the Apple iPad support are:

- Enhanced iPad user experience with the addition of application-specific gestures to create intuitive and efficient interactions.
- Context-sensitive awareness minimizes the number of touch interactions required by presenting the correct touch screen keyboard for specific user data entry tasks.
- Specialized functionality tailored for field technicians, including instant access to important attachments, technical manuals and work order documentation, as well as one-touch access to Google Maps for driving directions.
- Support for standard security and deployment features to enable worry-free mobile deployments.

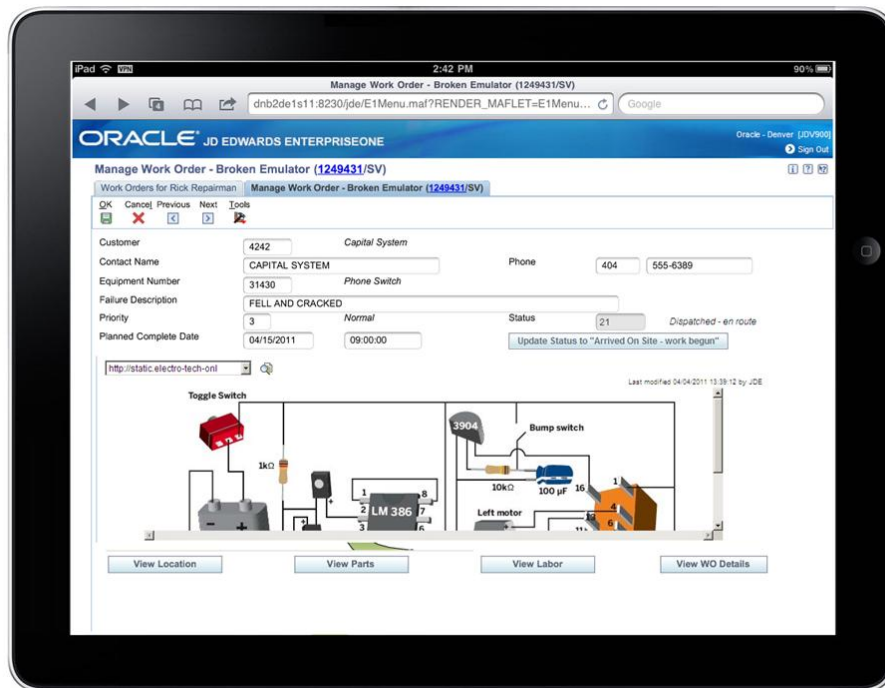


Figure 4. JD Edwards EnterpriseOne on the Apple iPad.

Contact Us

For more information about JD Edwards EnterpriseOne, visit oracle.com or call +1.800.ORACLE1 to speak to an Oracle representative.



Oracle is committed to developing practices and products that help protect the environment

Copyright © 2011, Oracle and/or its affiliates. All rights reserved. This document is provided for information purposes only and the contents hereof are subject to change without notice. This document is not warranted to be error-free, nor subject to any other warranties or conditions, whether expressed orally or implied in law, including implied warranties and conditions of merchantability or fitness for a particular purpose. We specifically disclaim any liability with respect to this document and no contractual obligations are formed either directly or indirectly by this document. This document may not be reproduced or transmitted in any form or by any means, electronic or mechanical, for any purpose, without our prior written permission.

Oracle and Java are registered trademarks of Oracle and/or its affiliates. Other names may be trademarks of their respective owners.

Hardware and Software, Engineered to Work Together