

PEOPLESOFT 9.2

INVEST IN INNOVATION

KEY FEATURES

- Global, free-text search
- Contextual related actions
- Visualized processes
- Cockpit style" command centers"
- Embedded real-time, multi-dimensional decision support analysis

KEY BENEFITS

- Greater user adoption
- Increased user efficiency
- Decreased training costs
- Higher productivity
- Streamlined business processes
- Reduced need for customization
- Lower cost to stay current

Oracle's commitment to PeopleSoft continues. Building from a proven 25-year history of best-in-class solutions, PeopleSoft includes more than 1,000 new features, functions, and enhancements. Delivering revolutionary innovation, PeopleSoft 9.2 provides solutions that are simpler and more intuitive to use, functionally complete, and that lower the total cost of ownership.

Simpler and More Intuitive to Use

PeopleSoft 9.2 creates an improved user experience that fundamentally changes how users interact with PeopleSoft. PeopleSoft 9.2 takes the user experience to the next level—with a more intuitive, easy-to-use interface that incorporates the consumer internet experience. This improved user experience with PeopleSoft 9.2 can increase user efficiency, drive greater user adoption, and decrease training costs. Key capabilities enabling this include:

- A new global, free text [search](#) across multiple objects and multiple instances within PeopleSoft via Oracle's Secure Enterprise Search. PeopleSoft 9.2 provides more than 120 indices to enable users to quickly retrieve accurate and actionable search results for a more efficient search-driven approach to navigating.

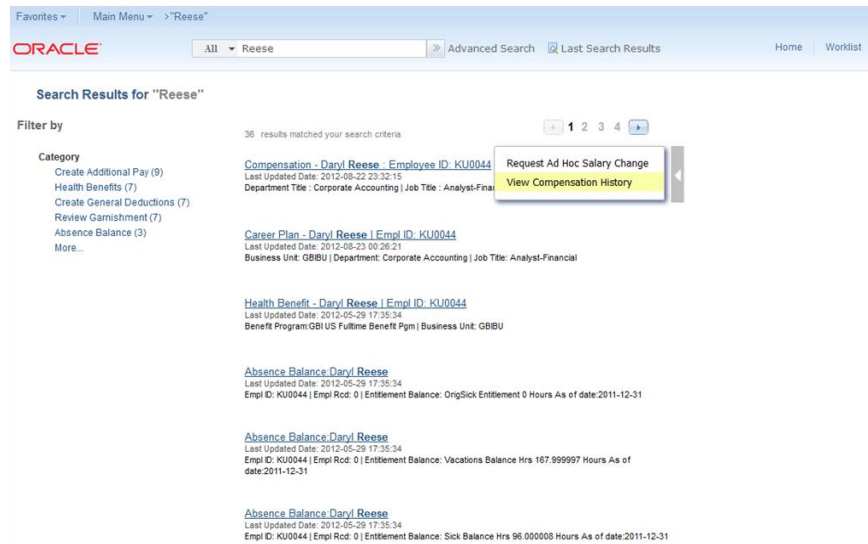


Figure 1. Global, free text search powered by Oracle's Secure Enterprise Search in PeopleSoft 9.2

- Adoption of the expanded [Related Actions Framework](#) delivered in [PeopleTools 8.53](#), which further streamlines navigation by enabling users to take contextually relevant actions on objects in place of using traditional menu paths.
- New visual guides to help casual users better navigate the system and execute activities faster and more easily, such as:

- Activity Guides enable intuitive, step-by-step processes that simplify a casual user's interaction with the system. Activity Guides are used in prebuilt [Life Events](#) for the self-service management of actions related to marriage, a newborn baby, adoption, and divorce/legal separation.
- Train Stop visualizations lay out steps of a process in a highly visual manner across the top of a work screen to help casual users better navigate other self-service actions such as [Pay Check Modeling](#) and Supplier On-Boarding.

Functionally Complete

In addition to an innovative new user experience, PeopleSoft 9.2 is the most functionally complete and robust release to date. The more than 1,000 new features, functions, and enhancements in PeopleSoft 9.2 can enable higher productivity among high-frequency business users and streamline business processes. PeopleSoft 9.2 delivers comprehensive business and industry solutions designed to address the most intricate requirements in HR, financials, and supply chain management, including:

- A number of out-of-the-box [WorkCenters](#) designed to dramatically improve user productivity by consolidating user tasks, exceptions, alerts, links, reports, and queries into a single, secure, role-based, cockpit style “command center” that can be personalized via end-user configuration.

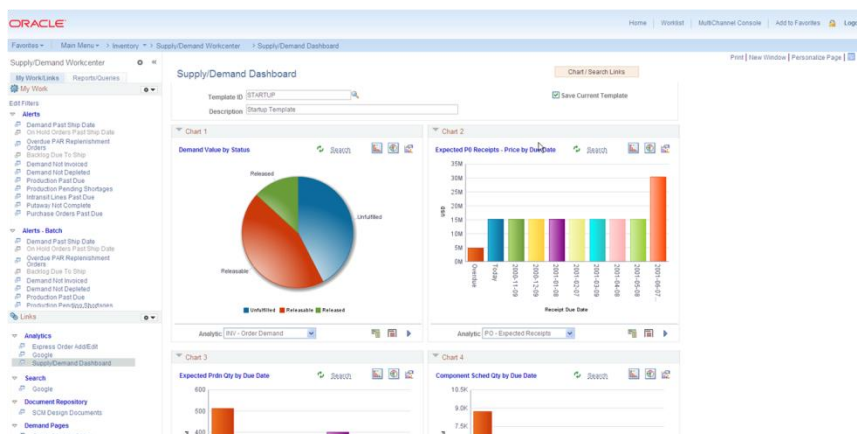


Figure 2. Secure, role based, cockpit style “command center” WorkCenter in PeopleSoft 9.2

- New embedded, real-time, multi-dimensional decision support analysis capabilities enabled by [Pivot Grids](#). PeopleSoft 9.2 includes more than 60 prebuilt self-service Pivot Grids and PeopleTools 8.53 includes wizard-like tools for customers to easily create their own Pivot Grids.
- PeopleSoft Human Capital Management 9.2 includes smart HR template-based transactions, Mid-Period Reviews, a consumer-oriented [recruiting](#) user experience, [Learning dashboard](#), redesigned time entry process, and many other new capabilities.
- PeopleSoft Financials and Supply Chain Management 9.2 include mass GL Journal Approval, Matching History, Supplier On-Boarding, [Cash Forecasting](#), Multi-Dimensional Project Rate Definition, Asset Retirement Obligation Accounting, new intuitive self-service [eProcurement](#) requisitioning, redesigned Expense entry, as well as numerous other new features.
- Industry-specific enhancements in PeopleSoft 9.2 include, but are not limited to: Approval Workflow for Commitment Control budget journals for Public Sector, support of Global Location Numbers (GLN) for Healthcare, balance sheet valuation through settlement date

RELATED PRODUCTS

The following related products are available from Oracle and can complement PeopleSoft solutions:

- Oracle Fusion Applications
- Oracle Business Intelligence
- Oracle Hyperion
- Oracle Primavera
- Oracle User Productivity Kit
- Oracle Fusion Middleware
- Oracle Exalogic
- Oracle Exadata
- Oracle Virtualization

RELATED SERVICES

The following related services are available from Oracle and can complement PeopleSoft solutions:

- Oracle Consulting
- Oracle Cloud Services
- Oracle University
- Oracle Support

for Financial Services, a new Grants WorkCenter for Higher Education, and a new Staffing WorkCenter and branch recruiter productivity tools for the Staffing industry.

- Building upon recent [mobile](#) capabilities, PeopleSoft 9.2 includes new mobile capabilities for requisitioning for purchasing users via eProcurement, which enables users to place and approve orders from their mobile devices.

Lower Total Cost of Ownership

Beyond the lower total costs realized from the reduced need for customization due to the more than 1,000 new features, functions, and enhancements in PeopleSoft 9.2, this release makes significant strides in addressing many of the components that affect the total cost associated with enterprise software ownership. Paramount among these components is the cost to stay current with maintenance. Designed to reduce the cost to stay current with maintenance, [PeopleSoft Update Manager](#) transforms the maintenance process. With PeopleSoft Update Manager, customers can:

- Define change packages so they are tailored to their specific needs.
- Apply maintenance on their schedules.
- Get current regardless of prior maintenance levels.
- Streamline maintenance processes.
- Minimize costs and disruptions associated with applying maintenance (for example, regression testing) and maximize the effect of desired updates.

Define Change Package

Identify bugs for Change Assistant to create an environment specific Change Package from the source database.



Select Search Criteria

Select Criteria to search for Bugs and create Change package

Database Name	HC92PROD	PeopleTools Release	8.53.01.004
Field Long Name	Company XXX Production HR 9.2		
Package Name	MYPACKAGE6		

Critical Search Criteria

Add Critical Search Criteria to any other Search

- Post Requisites for (Select) Previously Applied Fixes

Additional Search Criteria

Add Additional Search Criteria to narrow the scope of your Search

- Product Family
- Installed Products
- Severity

2 - Severe Loss of Service

Figure 3. Customer defined change package using PeopleSoft Update Manager

Other components that affect the total cost associated with enterprise software are addressed through the following:

- Enhancements in PeopleTools 8.53 to use Oracle Exalogic and Oracle Virtualization to consolidate multiple PeopleSoft instances onto a private cloud. This makes PeopleSoft more

affordable to operate and faster to deploy by providing: high capacity and performance, dynamic scaling, rapid provisioning, streamlined PeopleTools patching, and complete instance management.

- Further development of the PeopleSoft Testing Framework in PeopleTools 8.53 offers quicker testing through the use of reusable automatic test cases.
- The new Data Migration Workbench in PeopleTools 8.53 enables customers to abandon the manual rekeying of migration data in staging and production environments to the controlled, automated migration of application data sets. Application data sets can consist of reference data, configuration data, set-up data, or business rules (for example, allocation rules, business unit definition, earnings and deduction codes). The Data Migration Workbench provides straightforward and secure changes to PeopleSoft using auditable approval workflow and validation of reference keys and data.

Learn More

To learn more about the value of PeopleSoft 9.2 and access additional resources visit the [PeopleSoft Information Portal](#). Additionally, to see more PeopleSoft 9.2 capabilities access PeopleSoft Video Feature Overviews (VFOs) on the [PeopleSoft YouTube Channel](#).

Contact Us

For more information about [PeopleSoft](#), visit [oracle.com](#) or call +1.800.ORACLE1 to speak to an Oracle representative.



Copyright © 2013, Oracle and/or its affiliates. All rights reserved.

This document is provided for information purposes only, and the contents hereof are subject to change without notice. This document is not warranted to be error-free, nor subject to any other warranties or conditions, whether expressed orally or implied in law, including implied warranties and conditions of merchantability or fitness for a particular purpose. We specifically disclaim any liability with respect to this document, and no contractual obligations are formed either directly or indirectly by this document. This document may not be reproduced or transmitted in any form or by any means, electronic or mechanical, for any purpose, without our prior written permission.

Oracle and Java are registered trademarks of Oracle and/or its affiliates. Other names may be trademarks of their respective owners.

Intel and Intel Xeon are trademarks or registered trademarks of Intel Corporation. All SPARC trademarks are used under license and are trademarks or registered trademarks of SPARC International, Inc. AMD, Opteron, the AMD logo, and the AMD Opteron logo are trademarks or registered trademarks of Advanced Micro Devices. UNIX is a registered trademark of The Open Group. 0113

Hardware and Software, Engineered to Work Together