

ORACLE DATA INTEGRATION SUITE

KEY FEATURES AND BENEFITS

ORACLE DATA INTEGRATION SUITE, A UNIFIED SINGLE PLATFORM APPROACH FOR THE FULL SPECTRUM OF DATA INTEGRATION DEMANDS

FEATURES

- Rich Design & Development
- Flexible Data Distribution & Delivery
- High Performance Data Movement using E-LT
- Data Governance with Data Quality
- Master Data Management
- Versatile Connectivity Options for Databases, applications, and platforms

BENEFITS

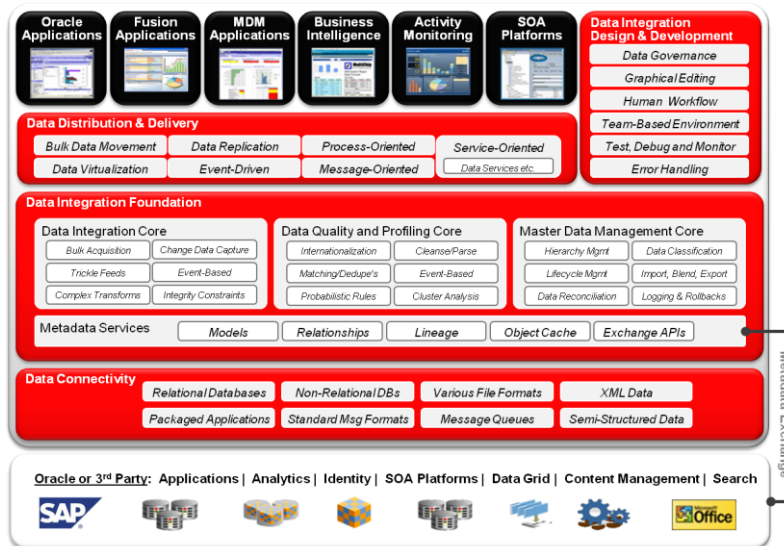
- Lowers the cost of Data integration—Open, lightweight, and modular architecture substantially strengthens SOA, BI, MDM, and Data Warehouse implementations.
- Reduces migration time and expense through declarative based tooling
- Improves data visibility and data accuracy. Quickly and easily assess the quality or your data with powerful analysis and data cleansing features.
- Provide deeper business insight, faster responsiveness. Innovative, modular design provides built-in connectivity to all major databases, data warehouse appliances, and analytic applications. Pre-built integrations to Oracle BI.

Oracle Data Integration Suite is a comprehensive set of data management components for building, deploying, and managing enterprise data integration solutions. Oracle Data Integration Suite enables enterprise data architects to unify, manage, and distribute data into enterprise applications and orchestrated business processes. With Oracle Data Integration Suite's open and hot-pluggable components, organizations can easily extend and evolve their architectures instead of replacing existing investments.

Product Overview

Every enterprise experiences data integration and data quality challenges. But resolving these challenges sometimes takes too much manual effort because of incomplete data integration platforms. Oracle Data Integration Suite is the first comprehensive data integration platform that combines best-of-breed data delivery services – like process orchestration, enterprise service bus, data virtualization, and bulk data services – with full-featured high-performance E-LT/ETL, Data Quality, and Master Data Management services.

The key foundation to the Oracle Data Integration Suite, Oracle Data Integrator Enterprise Edition (ODI-EE), delivers unique next-generation Extract Load and Transform (E-LT) technology that improves performance, reduces data integration costs, even across heterogeneous systems. ODI-EE offers the productivity of a declarative design approach, as well as the benefits of an active integration platform for seamless batch and real-time integration.

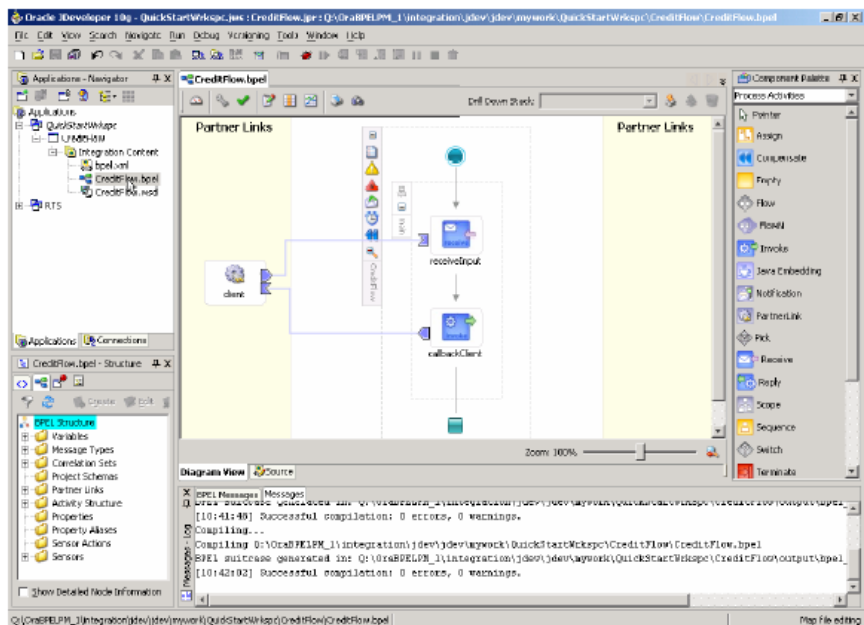


ODI Suite is the solution for any data integration centric business problem, including modern regulatory compliance (Sarbanes-Oxley, USA Patriot Act, and Basel II) business concerns, Legacy migration (mainframe to ERP), large-scale Data Warehousing, Business Intelligence programs and platform-enabled Master Data Management systems.

The Oracle Data Integration Suite consists of best-of-breed, well-integrated technology components from Fusion Middleware – these components, their integration points, and solution capabilities are described in the following sections.

Data Distribution and Delivery

Oracle Data Integration Suite is the only data integration solution that includes best-of-breed component technology for business process orchestration, enterprise service bus, data virtualization and batch data services. The Oracle Data Distribution and Delivery Service rests on a hot-pluggable J2EE server foundation, and comes with the Oracle Enterprise Service Bus for robust publish and subscribe messaging capabilities. Process orchestration capabilities are provided by Oracle BPEL Process Manager, and can be configured to support rule-based, event-based, and data-based delivery services. Batch data services are addressable at the Web Service layer and leverage highly-optimized native data protocols for delivery and transformation.



Oracle Data Integration Suite also provides the Data Distribution and Delivery infrastructure to support three different styles of Data Virtualization:

1. *Database Virtualization* – optimized for SQL-query interrogation, ODI-EE provides continuous Changed Data Capture feeds to keep multiple RDB data views (EII/MDM) fresh and in synch.
2. *Service Virtualization* – optimized for composite Web services in a Service

Component Architecture, the Oracle Enterprise Service Bus provides layered service virtualization for provisioning simple, business-oriented data services.

3. *Application Data Virtualization* – optimized for fast Java and .NET data object access directly embedded within the SOA service bus, the optional Oracle Coherence Data Grid supplies caching for extreme transactional data demands.

Only Oracle can unify these comprehensive Data Distribution and Delivery capabilities – process orchestration, service bus, event-driven, rule-driven, bulk data delivery, and optimized data virtualization components – into a single technology framework that is open, standards-based, and hot-pluggable with existing enterprise investments.

Design and Development

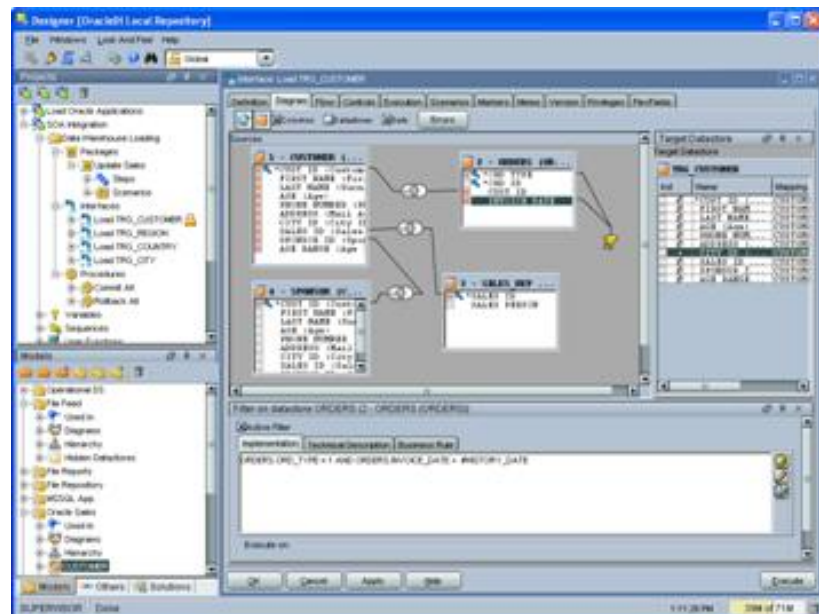
Oracle Data Integration Suite is oriented towards specific enterprise data management roles. A majority of these well integrated tool components share the Oracle JDeveloper platform, are 100% Java-based and highly-portable.

Supported Enterprise Data Management Roles Include:

- Process Architect - Process Modeling, Design, and Service Bus Config
- Data Steward – Human Workflow, Exceptions, and Data Repair
- Data Auditor - Data Profiling, Data Quality Rule Generation, and Reports
- Data Taxonomist - Master Data Management, Change Mgmt, and Diff's
- Data Architect - Bulk Data Mapping, Quality Flow Controls, and CDC

Data Integration Core

Oracle Data Integration Suite has at its very core, the most powerful and lightweight data integration solution in the industry. ODI-EE supplies a ground-breaking 100% Java-based E-LT engine that meets all the most important data integration requirements—from high-volume, high-performance batches, to event-driven, trickle-feed integration processes, and SOA-enabled data services.

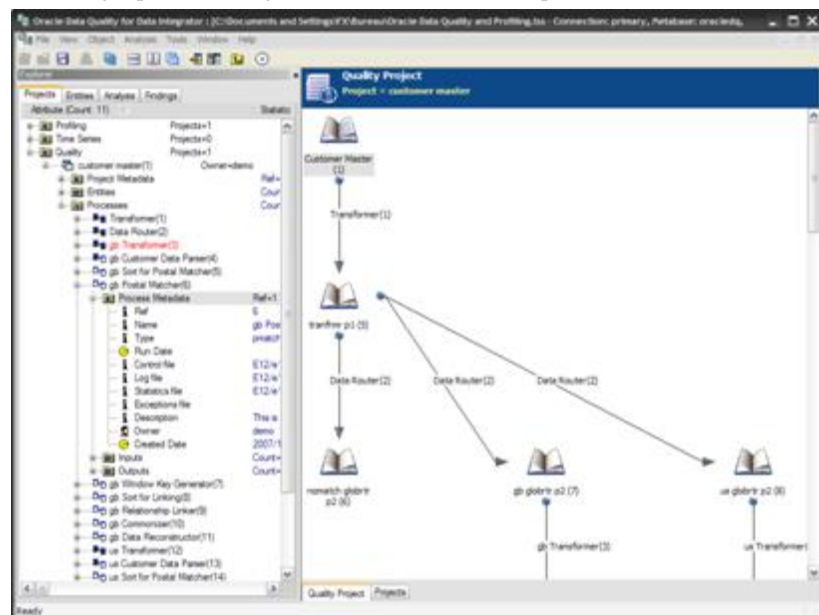


ODI-EE's Extract, Load, Transform (E-LT) architecture leverages disparate relational database management systems (RDBMS) engines to process and transform the data. This approach optimizes performance and scalability, simplifies the data center architecture and lowers solution and maintenance costs.

ODI-EE streamlines the movement and transformation of data between systems in batch, real-time, synchronous, and asynchronous modes. Its modular design and built-in connectivity to all major databases, data warehouse appliances, analytic applications, dramatically enhances user productivity.

Data Quality Core

Oracle Data Integration Suite contains a tightly integrated set of capabilities that span data integration, data profiling and data quality. The Oracle Data Quality for Data Integrator, and Oracle Data Profiling products are market-leading solutions for comprehensive enterprise data governance. Key governance functionality includes profiling and time-slicing of application data, automatic data quality rule generation, inline single-pass cleansing, standardization, and de-duplication of data records.



Oracle Data Quality and Oracle Data Profiling have built-in support for the widest available global quality rules and international post codes – making for a truly enterprise-class data quality solution.

Master Data for ODI Suite

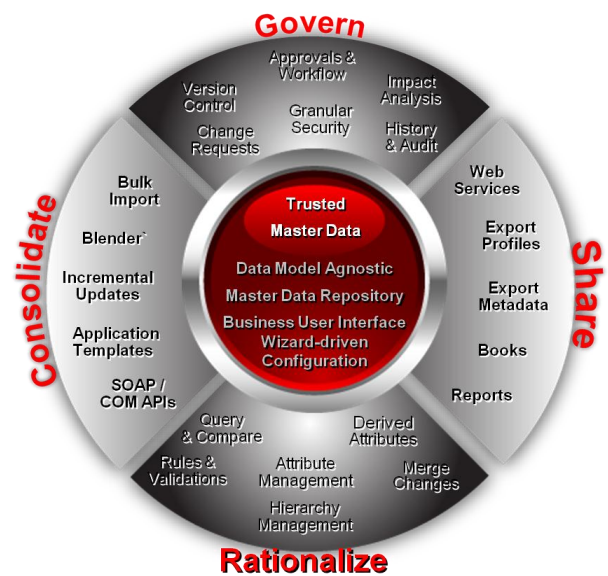
Oracle Data Integration Suite provides a data model agnostic platform for managing complex taxonomy, hierarchies, and managing vocabularies that are in constant flux and consumed by different organizations. The Oracle | Hyperion Data Relationship Manager is a strong all-purpose environment for managing business and technical reference data used in various data integration scenarios, it may be used to master a

wide variety of data, including:

- **Organizational Data:** Legal Entities and Corporate Hierarchies
- **Financial Data:** Cost Centers, Accounting Structures and Accounts
- **Reporting Data:** Business Intelligence and Warehouse Dimensions
- **Geographic Data:** Regions, Areas, and Intersecting Hierarchies
- Any data that is mainly driven by category and hierarchy-derivations

Unify cross-functional perspectives to a master record while freeing users to make changes and construct accurate and consistent views of the data. In this way, business users can contribute to the process of managing complex, rapidly changing data such as current, historical, or forecast data within dimensions and hierarchies.

Oracle | Hyperion Data Relationship Manager provides best-in-class capabilities for data governance, change management, hierarchical data management and provides the foundation for reference data management of any kind. The DRM solution greatly enhances any data integration effort by providing a business-facing area for managing core business data entities during integration.



Leveraging DRM, the ODI Suite enables true Closed-Loop Master Data Management for key business entities such as Cost Centers, Legal Entities, Account Codes, Organizational Structure and Geography information. By leveraging ODI Suite components, businesses can ensure consistent quality and shared vocabularies across mission-critical systems.

Master Data Management at Oracle

Oracle provides the most comprehensive Master Data Management solution footprint in the industry today. The combined strengths of Oracle’s Operational MDM Applications (including Customer, Supplier, Product, and Financial Hubs) with Oracle’s Analytical MDM Applications (Oracle | Hyperion Data Relationship Management) enable Oracle to deliver the only complete end-to-end MDM solution.

Data Connectivity

Oracle Data Integration Suite is available with the full array of Oracle supplied connectivity solutions for application level, API level, data level, bulk data style, protocol level and all types of legacy connectors. These include:

RELATED PRODUCTS AND SERVICES

Unify your enterprise data with a unified Data Integration Platform: Oracle Data Integration Suite

RELATED PRODUCTS

- Oracle Data Quality for Data Integrator
- Oracle Data Service Integrator
- Oracle Data Profiling
- Oracle Business Intelligence
- Oracle SOA Suite
- Oracle Database
- Oracle Data Warehousing
- Oracle Master Data Management

RELATED SERVICES

The following services are available from Oracle Support Services:

- Update Subscription Services
- Product Support Services

- **Structured**
 - All Relational Databases
 - Multi-Dimensional: OLAP
 - Packaged Applications: Oracle, PeopleSoft, Siebel, JDE, SAP...
 - Legacy: CICS, IMS, VSAM, Tux, OS390
 - B2B: EDIFACT, X12, AS/2, RosettaNet, ebXML, SWIFT, HL-7
 - Financial: Hyperion Planning, Budgeting, Consolidation, XBRL
 - J2EE and Java: JCA, JDBC, SDO
 - Standard Protocols: ODBC, SOAP, FTP, HTTP, SNA/LU6.2,
 - Message Queues and TPS: JMS, MQSeries, SunMQ, CICS
- **Unstructured Sources**
 - Market Leading & Widely Patented Document Conversion Technology
 - Format Conversion: Structural Conversion from one format to another
 - Filtering & Document Structure Validation
 - Versioning, Lifecycle Management, Metadata Integration

A Unified Solution for Comprehensive Data Integration

Oracle Data Integration Suite provides a comprehensive foundation for all enterprise data integration demands. Unlike other data integration tools that only provide part of the total solution, Oracle supplies award-winning Data Distribution and Delivery services, a modern, lightweight, high-performance Data Integration core, market-leading Data Quality and Data Profiling, proven Master Data capabilities, and a full array of Connectivity Solutions.

Oracle puts all these capabilities together in a hot-pluggable, open and accessible framework that is easily extensible and easily deployable within conventional IT architectures as well as modular enterprise SOA frameworks

For more information, see:

<http://www.oracle.com/goto/odi>

Contact Us

For more information about Oracle Data Integration Suite, please visit oracle.com or call +1.800.ORACLE1 to speak to an Oracle representative.



Oracle is committed to developing practices and products that help protect the environment

Copyright © 2009, Oracle and/or its affiliates. All rights reserved.

This document is provided for information purposes only and the contents hereof are subject to change without notice. This document is not warranted to be error-free, nor subject to any other warranties or conditions, whether expressed orally or implied in law, including implied warranties and conditions of merchantability or fitness for a particular purpose. We specifically disclaim any liability with respect to this document and no contractual obligations are formed either directly or indirectly by this document. This document may not be reproduced or transmitted in any form or by any means, electronic or mechanical, for any purpose, without our prior written permission.

Oracle is a registered trademark of Oracle Corporation and/or its affiliates. Other names may be trademarks of their respective owners. 0109