

NETBEANS INTEGRATED DEVELOPMENT ENVIRONMENT (IDE)

KEY FEATURES AND BENEFITS

DEVELOP PROFESSIONAL DESKTOP, ENTERPRISE, WEB, AND MOBILE APPLICATIONS

FEATURES

- Java EE 6 and GlassFish v3 development
- Java SE development including Swing GUI builder
- Java ME and JavaFX Mobile development
- NetBeans Platform framework for Swing desktop applications
- Scripting with JavaScript, PHP, Ruby, Groovy, plus web frameworks
- Support for C/C++ and Fortran
- Integrated access to version control, issue trackers, Hudson servers, application and web servers
- Free download, no license fees for usage

PROFESSIONAL SUPPORT AND TRAINING

BENEFITS

- Reduce development costs
- Reduce testing costs
- Reduce maintenance costs

The NetBeans integrated development environment (IDE) is a free software development tool for professionals who create enterprise, web, desktop, and mobile applications. Visit NetBeans.org and tap into the power of one of the largest open-source developer communities! NetBeans IDE is available for Windows, Mac, Linux, and Oracle Solaris.

Productivity Enhancement

An IDE is more than just a text editor - it's a time-saving utility for performing repetitive and complex tasks. A set of integrated tools assists you with the typical development workflow of coding, testing and debugging, profiling, compiling, running, and deploying. The NetBeans IDE has an integrated task list which keeps track of unfixed errors and unimplemented features and lets you jump directly to any to-do item in the source code. With the IDE, it is easy to manage large software projects and maintain control of multiple file revisions in a team environment.

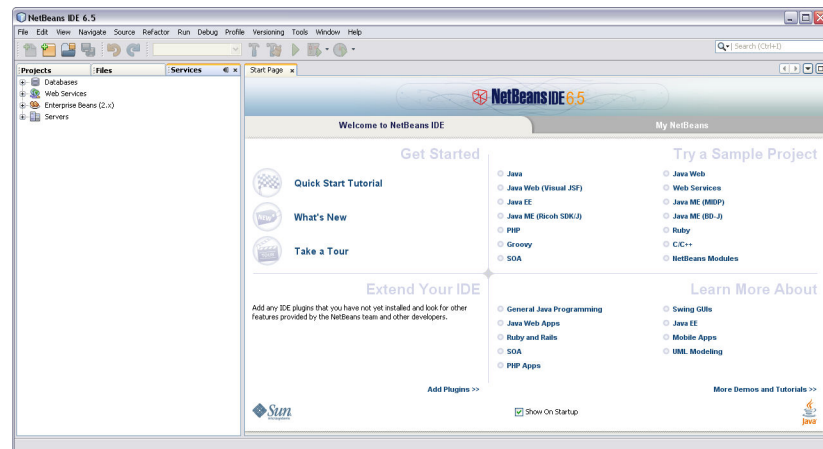


Figure 1. NetBeans IDE

Java Desktop Applications

Design professional Java Swing GUIs for Java desktop applications and benefit from built-in support for GUI localization and accessibility tools. The award winning NetBeans GUI builder takes care of the correct spacing and alignment, but still gives you the freedom to customize your code. You can combine the NetBeans GUI Builder and the NetBeans Platform to easily develop Swing desktop applications. Rather than creating your own visual Java editor from scratch, you can reuse open-

source code from the GUI Builder and add custom Java Beans to the palette.

Connected Developer Integration

Create open source projects and host them on Kenai.com. You can research, edit, debug, discuss, and commit code as well as file issue reports—all through the familiar NetBeans IDE interface.

Java Platform, Enterprise Development

The Java EE 6 platform provides proven strengths in scalability, reliability and security, and the NetBeans IDE goes hand in hand in making language and platform improvements easily available to developers. NetBeans projects support EJB 3.1 in web applications, JavaServer Faces 2.0 (Facelets), and annotations. You can also use the NetBeans IDE for development with the Java Persistence API, servlets, JavaServer Pages (JSP), Spring and Hibernate frameworks, and web services. With the NetBeans IDE you can create and deploy Web applications using the lightweight Java EE 6 Web Profile, or leverage the power of the full Java EE 6 or Java EE 5 platforms for enterprise applications.

Dynamic Languages

Speed up the development of web applications by taking advantage of the smooth integration with scripting languages and web frameworks in the NetBeans IDE. The editor supports code completion and syntactic and semantic highlighting for JavaScript, (X)HTML, PHP, (j)Ruby, Groovy, JavaFX and Python. Benefit from familiar profiling and debugging tools and save time with our wizards and access to web framework commands for Symphony, Ruby on Rails, and Grails.

Java Mobile Development

With the NetBeans IDE you create, test, debug and deploy applications that will run on mobile phones, PDAs, set-top boxes, embedded systems — literally billions of devices. The JavaFX SDK 1.2.x supports JavaFX Mobile and comes with a JavaFX Mobile Emulator. JavaFX Mobile applications run directly on the Java Micro Edition platform. The NetBeans IDE comes bundled with the latest Java ME SDK 3.0 which supports both CLDC and CDC development. You can easily register other Java platforms, including the Java Card Platform 3.0. The NetBeans IDE simplifies development with its Visual Mobile Designer and Mobile Game Builder, and it supports SVG components, data binding, and over-the-air (OTA) emulation. You have complete control over tools for JUnit testing, MIDlet signing, certificate management, ProGuard code obfuscation, and more, using standard Apache Ant scripts.

The NetBeans Platform

NetBeans is not only an IDE, but also a rock-solid application framework for Swing applications. You can make the NetBeans Platform and the custom modules you develop the base for multiple applications that share common APIs. Reusing common open-source components saves you work and time that you can spend focusing on your application's unique business logic. Software written in the Java

RELATED PRODUCTS AND SERVICES

COMPANION PRODUCTS

- Oracle Glassfish Server
- Oracle WebLogic Server
- Oracle JDeveloper
- Oracle Enterprise Pack for Eclipse

programming language is ready to run on the Microsoft Windows, Apple Mac OS, Solaris, or Linux operating systems — everywhere the Java Virtual Machine is installed.

Integrated Developer Services

The NetBeans IDE gives you direct access to your databases, version controlled repositories, Hudson build servers, and issue trackers. You can browse and modify databases, and start and stop web servers and application servers, such as the GlassFish Enterprise Server v3 or Oracle WebLogic Server. When you submit a patch to the version controlled repository, you can change the status of the associated issue report in the same step.

Licensing Support

The NetBeans IDE and Platform are free, open-source software. After you download the NetBeans software, you can use it for commercial and non-commercial purposes right away. There are no license costs for any kind of usage of the NetBeans IDE or the NetBeans Platform. You can sell applications you created, and you are not required to open-source your own code (but you can). The NetBeans source code is available under a dual license consisting of the Common Development and Distribution License (CDDL) v1.0 and the GNU General Public License (GPL) v2. This means that only in the rare case that you modified sources of the NetBeans Platform itself, you need to publish these changes so that the community can benefit from possible improvements. If your company requires additional professional services, Oracle does offer support contracts as well as training for the NetBeans IDE. Communicate with other experts on our free discussion forums, and access the knowledge base of tutorials and documentation on netbeans.org.

Contact Us

For more information about NetBeans IDE, please visit netbeans.org or call +1.800.ORACLE1 to speak to an Oracle representative.



Oracle is committed to developing practices and products that help protect the environment

Copyright © 2010, Oracle and/or its affiliates. All rights reserved.

This document is provided for information purposes only and the contents hereof are subject to change without notice. This document is not warranted to be error-free, nor subject to any other warranties or conditions, whether expressed orally or implied in law, including implied warranties and conditions of merchantability or fitness for a particular purpose. We specifically disclaim any liability with respect to this document and no contractual obligations are formed either directly or indirectly by this document. This document may not be reproduced or transmitted in any form or by any means, electronic or mechanical, for any purpose, without our prior written permission.

Oracle and Java are registered trademarks of Oracle and/or its affiliates. Other names may be trademarks of their respective owners.

AMD, Opteron, the AMD logo, and the AMD Opteron logo are trademarks or registered trademarks of Advanced Micro Devices. Intel and Intel Xeon are trademarks or registered trademarks of Intel Corporation. All SPARC trademarks are used under license and are trademarks or registered trademarks of SPARC International, Inc. UNIX is a registered trademark licensed through X/Open Company, Ltd. 0110