



## Asset Monitoring with Oracle Internet of Things Cloud Service

Readily Deploy an Internet of Things Application for Rapid Integration of Device Data into Asset Monitoring Workflows

A major challenge to businesses is the cost and complexity of integrating Internet of Things (IoT) device data into existing operations. Corporations whose performance depends on efficiency in the management and utilization of physical assets demand easy solution deployment and a rapid demonstration of the benefits of IoT automation and analytics. Oracle makes this possible with the introduction of a customizable Asset Monitoring application as part of Oracle Internet of Things Cloud Service.

### Oracle Internet of Things Cloud Service Applications

Accelerate Time-to-Value and Lower the Cost and Complexity of IoT Solution Deployments

Oracle Internet of Things Cloud Service now offers SaaS-style applications that are included with the service and immediately runnable. These IoT applications target a broad range of digital transformation use cases within Germany's Industrie 4.0 initiative and other similar charters. They optimize business operations through the introduction of IoT data, advancing the convergence of manufacturing operations and internal business functions.

IoT applications can be easily customized with the specifics of your operation using a simple and intuitive user interface, eliminating the need for programming expertise and complex SDKs. IoT applications can also be integrated with other SaaS and on-premises applications from Oracle or third-party vendors using either REST APIs or the extensive enterprise integration mechanisms built into the underlying Oracle Internet of Things Cloud Service.

### Gain Instant Visibility Into Critical Asset Locations, Utilization, and Operational Health

The Asset Monitoring application is the first in the series of built-in IoT applications offered with Oracle Internet of Things Cloud Service. It enables users working with both fixed and movable assets to perform tasks such as rapidly locating available assets for a job, assessing



ORACLE

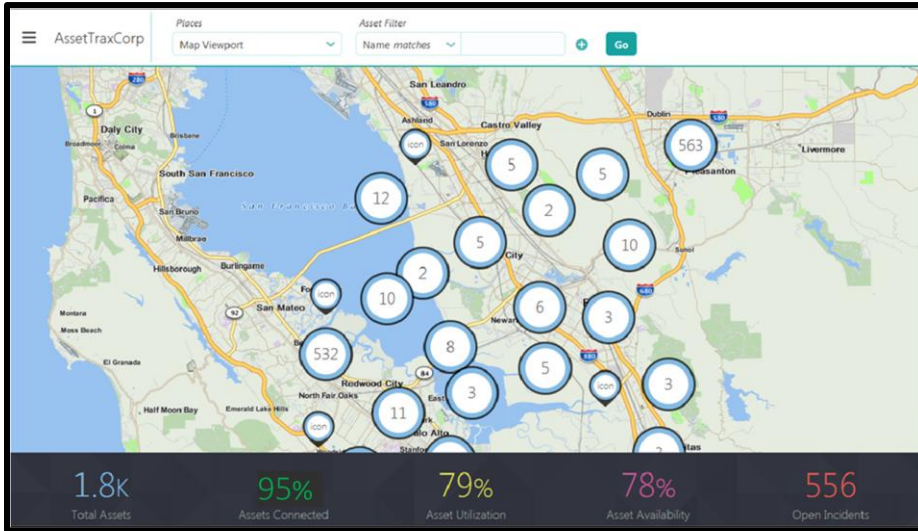
Oracle Internet of Things  
Asset Monitoring Application

#### THE ORACLE INTERNET OF THINGS ASSET MONITORING APPLICATION

- A ready-to-use business application
- Simple user-interface based customization and configuration
- Designed for business users
- Ability to easily add assets and associate with IoT sensor device(s) for location and status data
- Intuitive dashboard style views with rich filtering and search capabilities that provide accurate, timely location information and track key performance indicators for individual assets or entire asset classes
- Ability to easily compose rules for incident report generation based on asset movement, operational outages, or alerts from asset sensor devices or the Oracle Internet of Things Cloud Service event subsystem

ORACLE

the health of assets, and reviewing asset specifications while in the field or office. It also enables mobile workers, such as field service technicians, to register assets, locate assets, and monitor asset health as well as maintenance, outage, and other asset incidents. A set of key performance indicators give operations management staff a real-time indication of how well assets are being utilized and maintained.




Oracle Internet of Things Cloud Service's Asset Monitoring application provides easy-to-read dashboards and views that enable you to track asset location and status.

The Asset Monitoring application is included free as part of Oracle Internet of Things Cloud Service and is fully supported as a part of the service offering.

By leveraging the powerful features of the underlying Oracle Internet of Things Cloud Service, the Asset Monitoring application provides a highly accurate, real-time view of asset condition, usage, and performance made possible by the seamless integration of IoT data into asset monitoring operations.

#### CONNECT WITH US

-  [blogs.oracle.com/oracle](https://blogs.oracle.com/oracle)
-  [facebook.com/oracle](https://facebook.com/oracle)
-  [twitter.com/oracle](https://twitter.com/oracle)
-  [oracle.com](https://oracle.com)

FOR MORE INFORMATION  
Contact: 1.800.ORACLE1