

# Oracle Enterprise Command Centers

## QUICK START GUIDE



Videos	Watch
<i>Oracle E-Business Suite Enterprise Command Centers</i> Cliff Godwin, Senior Vice President of Applications Development	<a href="#">Play</a>
<i>Empowering the Oracle E-Business Suite User Experience: Data Discovery and Visualization</i> Muhannad Obeidat, Vice President of Software Development	<a href="#">Play</a>

Documents	Doc ID
<i>Installing Oracle Enterprise Command Center Framework</i>	<a href="#">2495053.1</a>
<i>Enabling TLS for Oracle Enterprise Command Center Framework</i>	<a href="#">2496445.1</a>
<i>Extending Oracle Enterprise Command Center Framework</i>	<a href="#">2527150.1</a>
<i>Oracle Enterprise Command Center Framework Globalization Guide</i>	<a href="#">2527147.1</a>

Patches for Oracle E-Business Suite Release 12.2.4 and later are listed in the table below:

	12.2.4	12.2.5	12.2.6	12.2.7	12.2.8
<b>Prerequisites</b>	<a href="#">R12.AD.C.DELTA.10</a> , <a href="#">R12.TXK.C.DELTA.10</a>				
<b>ATG</b>	<a href="#">28779977</a>	<a href="#">28780005</a>	<a href="#">28779999</a>	<a href="#">28780017</a>	<a href="#">28780020</a>
<b>ECC Adapter</b>	<a href="#">28780241</a>				
<b>SCM</b>	<a href="#">28780037</a> (Order Management, Inventory Management, Enterprise Asset Management, Channel Revenue Management, Discrete Manufacturing, Process Manufacturing, Outsourced Manufacturing, Cost Management)				
<b>Financials</b>	<a href="#">28780031</a> (Receivables, iReceivables, Assets, Payables, Lease and Finance Management)				
<b>CRM</b>	<a href="#">28816408</a> (Service Contracts, Service, Incentive Compensation)				
<b>Project</b>	<a href="#">29008305</a> (Projects)				
<b>Procurement</b>	<a href="#">28779987</a> (iProcurement, Contract Lifecycle Management)				

# Oracle Enterprise Command Centers

## QUICK START GUIDE

Training and doc for implementing Enterprise Command Centers are linked below:



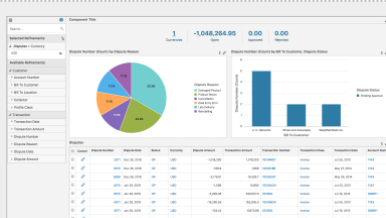
**Oracle Enterprise Command Center Framework**  
[Implement and Use \(Install\) Online Training](#)  
[Implement and Use \(UI Components\) Online Training](#)  
[User Guide](#)



**Oracle Payables Command Center**  
[Implement and Use Online Training](#)  
[Implementation Guide](#)  
[User Guide](#)



**Oracle Receivables Command Center**  
[Implement and Use Online Training](#)  
[Implementation Guide](#)  
[User Guide](#)



**Oracle iReceivables Command Center**  
[Implement and Use Online Training](#)  
[Implementation Guide](#)  
[User Guide](#)



**Oracle Channel Revenue Management Command Center**  
[Implement and Use Online Training](#)  
[Implementation Guide](#)  
[User Guide](#)



**Oracle Assets Command Center**  
[Implement and Use Online Training](#)  
[Implementation Guide](#)  
[User Guide](#)



**Oracle Incentive Compensation Command Center**  
[Implement and Use Online Training](#)  
[Implementation Guide](#)  
[User Guide](#)

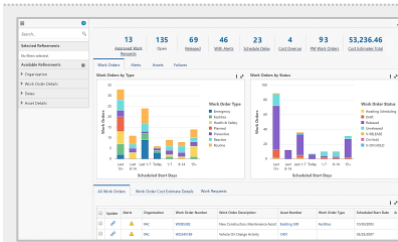
# Oracle Enterprise Command Centers

## QUICK START GUIDE

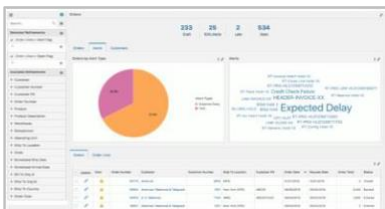
Training and doc for implementing Enterprise Command Centers are linked below:



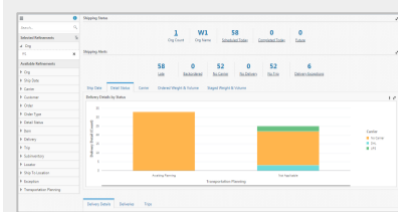
[Oracle Lease and Finance Management Command Center  
Implement and Use Online Training  
Implementation Guide  
User Guide](#)



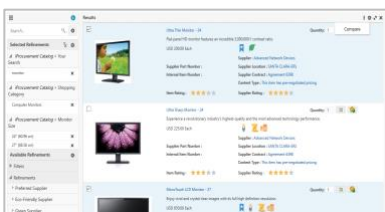
[Oracle Enterprise Asset Command Center  
Implement and Use Online Training  
Implementation Guide  
User Guide](#)



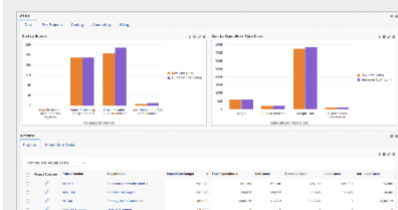
[Oracle Order Management Command Center  
Implement and Use Online Training  
Implementation Guide  
User Guide](#)



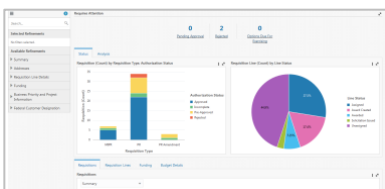
[Oracle Inventory Management Command Center  
Implement and Use Online Training  
Implementation Guide  
User Guide](#)



[iProcurement: Consumer-Like Shopping  
Implement and Use Online Training  
Implementation Guide  
User Guide](#)



[Oracle Projects Command Center  
Implement and Use Online Training  
Implementation Guide  
User Guide](#)



[Oracle Contract Lifecycle Management for Public  
Sector Command Center  
Implement and Use Online Training  
Implementation Guide  
iProcurement User Guide / Purchasing User Guide](#)

# Oracle Enterprise Command Centers

## QUICK START GUIDE

Training and doc for implementing Enterprise Command Centers are linked below:



**Oracle Discrete Manufacturing Command Center**  
[Implement and Use Online Training](#)  
[Implementation Guide](#)  
[User Guide](#)



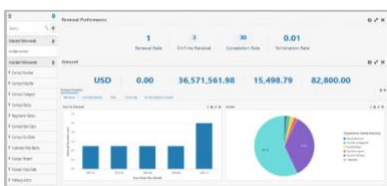
**Oracle Process Manufacturing Command Center**  
[Implement and Use Online Training](#)  
[Implementation Guide](#)  
[User Guide](#)



**Oracle Outsourced Manufacturing Command Center**  
[Implement and Use Online Training](#)  
[Implementation Guide](#)  
[User Guide](#)



**Oracle Cost Management Command Center**  
[Implement and Use Online Training](#)  
[Implementation Guide](#)  
[User Guide](#) / [Process Manufacturing User Guide](#)



**Oracle Service Contracts Command Center**  
[Implement and Use Online Training](#)  
[Implementation Guide](#)  
[User Guide](#)



**Oracle Service Command Center**  
[Implement and Use Online Training](#)  
[Implementation Guide](#)  
[User Guide](#)