

JD Edwards UX One

ORACLE® JD Edwards EnterpriseOne

JD Edwards UX One is the latest advancement in the JD Edwards EnterpriseOne user experience. UX One drives users to be productive as quickly as possible by leveraging the Alert, Analyze, Act design principles. With UX One, users can spend more time managing exceptions, making JD Edwards EnterpriseOne more efficient for existing users and more appealing to new types of roles.

UX One includes a set of role-based solutions across the broad portfolio of JD Edwards products, and delivers the tools you need to personalize and create your own solutions.

KEY FEATURES AND BENEFITS

- Role-based landing pages based on the Alert, Analyze, Act design paradigm
- Modernized graphical user interfaces that give you facts at-a-glance
- Form Personalization for citizen developers for dynamic interface changes
- CafeOne composite applications to bring together related information for a simplified user experience
- Templates and utilities to help you create your own analytics
- Data grouping for aggregations, including currency conversions
- Springboards to place key tasks in a Composed Page
- Navigation from charts to applications to help you drill down into data
- Context menu navigation from charts to related applications

UX One: Overview

What do you need to work efficiently? For many users, it's alerts to notify you of what needs attention, visual representation of your most important business data to analyze your current business needs, and the ability to quickly act on your analysis. UX One enables you to do all of that from role-based landing pages for dozens of industry roles. Personalized forms for these roles make it quick and easy for users to take the actions they need. Additionally, UX One builds on personalization and configuration tools so that end users and citizen developers can make the user experience their own.

At-a-Glance Facts

The Alert, Analyze, Act design principles put your most important decision-making facts in one place – a role-based landing page.

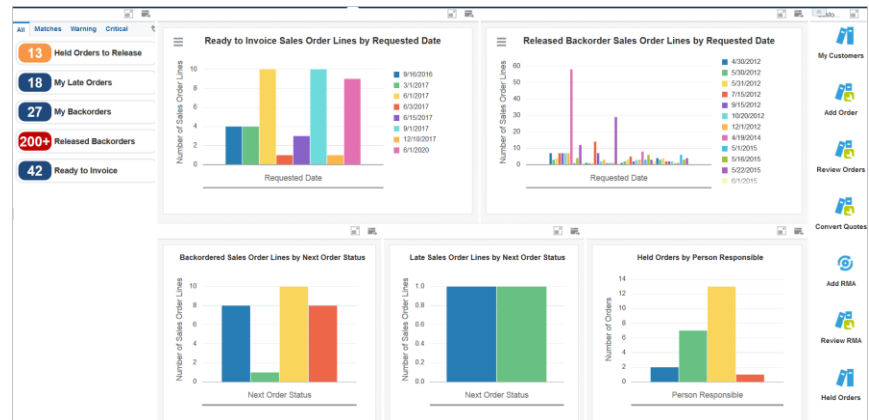


Figure 1: Role-Based Landing Page

The left pane of the landing page includes watchlist alerts that notify you when critical issues reach your defined thresholds. You define what the warning and critical limits are for tasks associated with the Watchlists alerts. You can click the alert to go to the EnterpriseOne application that provides you with more information about the alert.

The center pane provides analytics so that you can review the status of your most important business processes. You can personalize delivered queries for the analytics, or you can create your own.

The right pane of the landing page is a springboard of tasks most commonly used by persons in the role. They enable you to take action on the alerts and analytics.

UX One includes role-based landing pages for a broad spectrum of product areas.

TABLE 1: DELIVERED ROLES

Roles	Roles
<ul style="list-style-type: none"> • <i>Accounts Payable Manager</i> • <i>Accounts Receivable Manager</i> • <i>Asset Manager</i> • <i>Benefits Manager</i> • <i>Collections Manager</i> • <i>Credit Manager</i> • <i>Crop Production Manager</i> • <i>Customer Service Manager</i> • <i>Customer Service Representative</i> • <i>Field Manager</i> • <i>Field Service Manager</i> • <i>Field Service Supervisor</i> • <i>Fulfillment Manager</i> • <i>General Accounting Manager</i> • <i>Grower Contract Manager</i> • <i>Human Resources Manager</i> • <i>Inventory Accounting Manager</i> • <i>Inventory Control Manager</i> • <i>Lease Administrator</i> • <i>Lessee Accounting Manager</i> • <i>Lot Start Manager</i> • <i>Maintenance Manager</i> • <i>Maintenance Scheduler</i> • <i>Maintenance Supervisor</i> • <i>Maintenance Technician</i> • <i>Operations Manager</i> 	<ul style="list-style-type: none"> • <i>Payroll Manager</i> • <i>Plant Manager</i> • <i>Pricing Operations Manager</i> • <i>Procurement Manager</i> • <i>Procurement Agreement Manager</i> • <i>Procurement Pricing Operations Manager</i> • <i>Production Manager</i> • <i>Production Scheduler</i> • <i>Project Manager</i> • <i>Property Manager</i> • <i>Rental Operations Manager</i> • <i>Requisition Manager</i> • <i>Safety Manager</i> • <i>Sales Agreement Manager</i> • <i>Service Agent Manager</i> • <i>Service Contract Manager</i> • <i>Service Operations Manager</i> • <i>Shipping Supervisor</i> • <i>Strategic Buyer</i> • <i>Strategic Pricing Manager</i> • <i>Transportation Manager</i> • <i>VMI Account Manager</i> • <i>VMI Agreement Manager</i> • <i>Warehouse Manager</i> • <i>Winemaker</i> • <i>Wine Cellar Manager</i>

Move Beyond Basic Charts

UX One also leverages developer technologies to provide modern graphical user interfaces using controls such as maps, hierarchal diagrams, and Gantt charts. For example, ADF (Application Development Framework) is used to display properties on a map for a Property Manager.

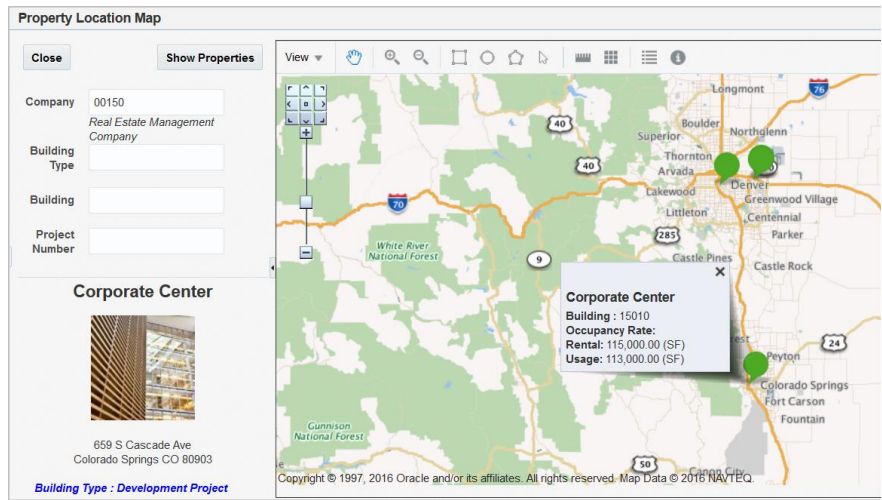


Figure 2: Property Location Map

These features give you more information at your fingertips such as:

- A visualization of commitments on a calendar, such as committed and available resources
- Proximity to other locations on a map, such as the location of other rental properties
- Relationships between entities, such as the subordinates to a manager

TABLE 2: ROLES WITH ADF COMPONENTS

Roles	ADF Component
Field Service Manager	Oracle JD Edwards EnterpriseOne Gantt Chart for Staff Utilization (Doc ID 2189816.1)
Human Resources Manager	Oracle JD Edwards EnterpriseOne Employee Organization Chart Hierarchy (Doc ID 2189817.1)
Production Manager	Oracle JD Edwards EnterpriseOne Visual Manufacturing Item Where Used (Doc ID 2189819.1)
Production Manager	Oracle JD Edwards EnterpriseOne Visual Manufacturing Bill of Materials (Doc ID 2189818.1)
Property Manager	Oracle JD Edwards EnterpriseOne Property Location Map (Doc ID 2189830.1)
Rental Operations Manager	Oracle JD Edwards EnterpriseOne Gantt Chart for Rental Item Availability (Doc ID 2189815.1)

Work the Way You Want

UX One builds on existing personalizations, such as List Views, to let you work the way you want. Form Personalization is an innovation driven by simplicity – empowering you to have the system display information that is relevant to you.

Form Personalization lets you hide/show, move, rename, resize, and reposition the controls in a form so that you see only the information you need.

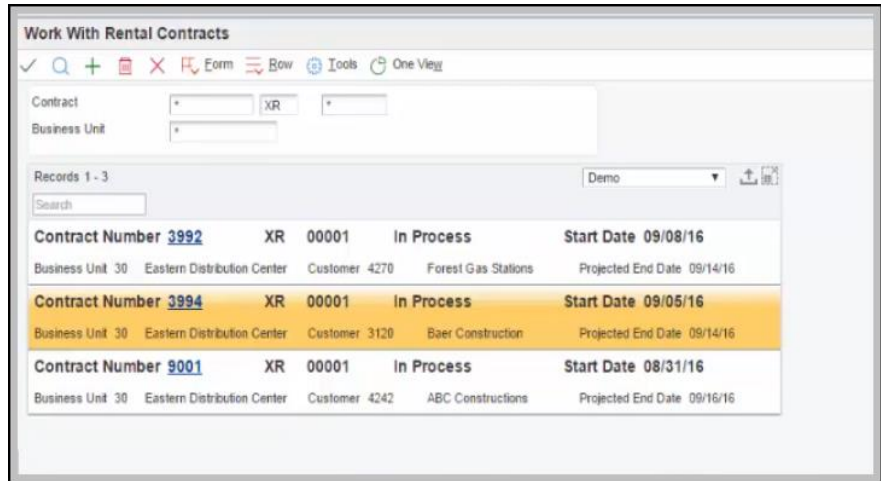


Figure 3: Image of a List View

Enhanced analytics components enable you to navigate to the base applications to view the data used in the charts and then filter the data based on your requirements to further investigate or take action. In addition to this, you can navigate to related applications from the charts using context menus.

TABLE 3: ROLES WITH BASIC CHART NAVIGATION CAPABILITY

Roles	Roles
<ul style="list-style-type: none"> • Accounts Payable Manager • Accounts Receivable Manager • Asset Manager • Benefits Manager • Collection Manager • Credit Manager • Crop Manager • Customer Service Manager • Customer Service Representative • Field Manager • Field Service Manager • Field Service Supervisor • Fulfillment Manager • General Accounting Manager • Grower Contract Manager • Human Resources Manager • Inventory Accounting Manager • Inventory Control Manager • Maintenance Manager • Maintenance Scheduler • Maintenance Supervisor • Maintenance Technician 	<ul style="list-style-type: none"> • Operations Manager • Payroll Manager • Plant Manager • Pricing Operations Manager • Procurement Agreement Manager • Procurement Manager • Procurement Pricing Operations Manager • Project Manager • Property Manager • Rental Operations Manager • Safety Manager • Sales Agreement Manager • Service Agent Manager • Service Contract Manager • Service Operations Manager • Strategic Buyer • Strategic Pricing Manager • VMI Account Manager • Warehouse Manager • Winemaker • Wine Cellar Manager

TABLE 4: ROLES WITH CHART CONTEXT MENU NAVIGATION CAPABILITY

Roles	Roles
<ul style="list-style-type: none"> • Accounts Payable Manager • Accounts Receivable Manager • Asset Manager • Collection Manager • Credit Manager • Customer Service Manager 	<ul style="list-style-type: none"> • Maintenance Scheduler • Operations Manager • Payroll Manager • Procurement Agreement Manager • Procurement Manager • Procurement Pricing Operations Manager

<ul style="list-style-type: none"> • <i>Customer Service Representative</i> • <i>Field Service Manager</i> • <i>Field Service Supervisor</i> • <i>Fulfillment Manager</i> • <i>General Accounting Manager</i> • <i>Human Resources Manager</i> • <i>Inventory Accounting Manager</i> • <i>Inventory Control Manager</i> • <i>Maintenance Manager</i> 	<ul style="list-style-type: none"> • <i>Project Manager</i> • <i>Property Manager</i> • <i>Rental Operations Manager</i> • <i>Safety Manager</i> • <i>Sales Agreement Manager</i> • <i>Service Agent Manager</i> • <i>Strategic Pricing Manager</i> • <i>VMI Account Manager</i>
---	--

Jump-Start Your Configuration & Personalization

UX One delivers the tools citizen developers and programmers need to configure and personalize the user experience.

Composed Pages

Composed Pages are EnterpriseOne pages with user-defined layouts that you can create and design. They provide a user experience that enables you to access multiple content types from a single page. Composed Pages enable you to access web pages, EnterpriseOne application forms, One View Reports, Classic Pages, Designer Panes, Watchlist Panes, Springboard Panes, OBIEE objects, and ADF applications from page layouts you create in EnterpriseOne.

Analytic Components

Analytic content, some of which is included in landing pages, are built using Oracle's JET. These components can be personalized through creating your own queries or you can develop your own. You can download a local development environment and JET examples that you can customize using Oracle JET. The examples include:

- Bar and pie charts
- Form, data aggregation, and Data Browser service requests
- Complex query
- Tool tip
- Group by, data sorting functions
- Menu drawer

Springboard Pane

Add Springboard Panes to Composed Pages to provide a collection of tasks for a role. The tasks launched from the Springboard Pane can be EnterpriseOne applications, batch programs, ADF applications, and One View Reports.

List View

The List View grid format enables you to stack columns vertically so that the information displayed is compact and easy to find. Using the Grid Format Manager, you can select the grid columns you want to include in your List View grid format, and then group them in the way you want them displayed.

CafeOne

CafeOne (Composite Application Framework) enables users to combine information from various sources within an EnterpriseOne form. This enables users to view related information within one screen. Sources of content include:

- Other EnterpriseOne forms

- External web page content
- EnterpriseOne applications built using Application Development Framework (ADF)
- EnterpriseOne analytic components built using Oracle JET
- OBIEE (Oracle Business Intelligence Enterprise Edition) content

Form Personalization

Personal Forms introduce an innovative personalized experience to JD Edwards users. For all JD Edwards EnterpriseOne users who would like to simplify the JD Edwards EnterpriseOne application interfaces dynamically with minimal technical skills, Personal Forms present a seamless way to optimize and display information that is relevant to their roles, industry, and individual preferences.

Media Object Viewer





Media Object enhancements provide an easy-to-use and visually compelling interface embedded with robust capabilities. You can drag and drop content, right-click to access context menus, and easily access media objects from within the application.

CONTACT US

For more information about JD Edwards EnterpriseOne, visit oracle.com or call +1.800.ORACLE1 to speak to an Oracle representative.



CONNECT WITH US

-  blogs.oracle.com/oracle
-  facebook.com/oracle
-  twitter.com/oracle
-  oracle.com

Integrated Cloud Applications & Platform Services

Copyright © 2018, Oracle and/or its affiliates. All rights reserved. This document is provided for information purposes only, and the contents hereof are subject to change without notice. This document is not warranted to be error-free, nor subject to any other warranties or conditions, whether expressed orally or implied in law, including implied warranties and conditions of merchantability or fitness for a particular purpose. We specifically disclaim any liability with respect to this document, and no contractual obligations are formed either directly or indirectly by this document. This document may not be reproduced or transmitted in any form or by any means, electronic or mechanical, for any purpose, without our prior written permission.

Oracle and Java are registered trademarks of Oracle and/or its affiliates. Other names may be trademarks of their respective owners.

Intel and Intel Xeon are trademarks or registered trademarks of Intel Corporation. All SPARC trademarks are used under license and are trademarks or registered trademarks of SPARC International, Inc. AMD, Opteron, the AMD logo, and the AMD Opteron logo are trademarks or registered trademarks of Advanced Micro Devices. UNIX is a registered trademark of The Open Group. 0418